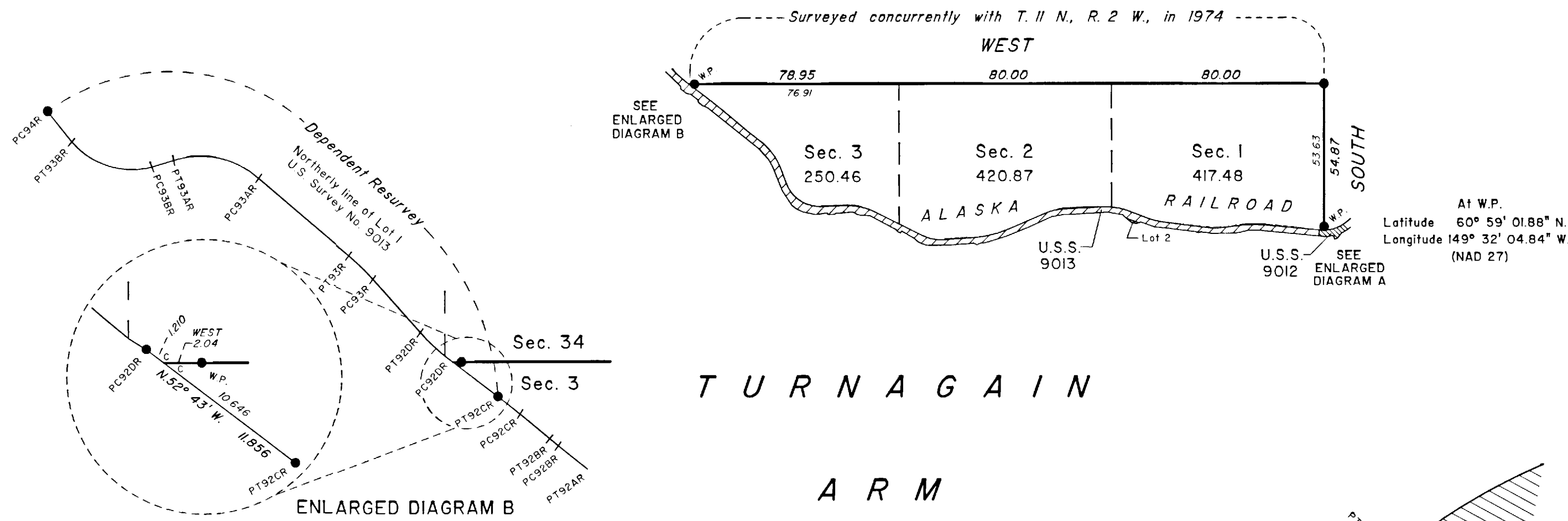


DATE FEBRUARY 11, 2000

TOWNSHIP 10 NORTH, RANGE 2 WEST, OF THE SEWARD MERIDIAN, ALASKA



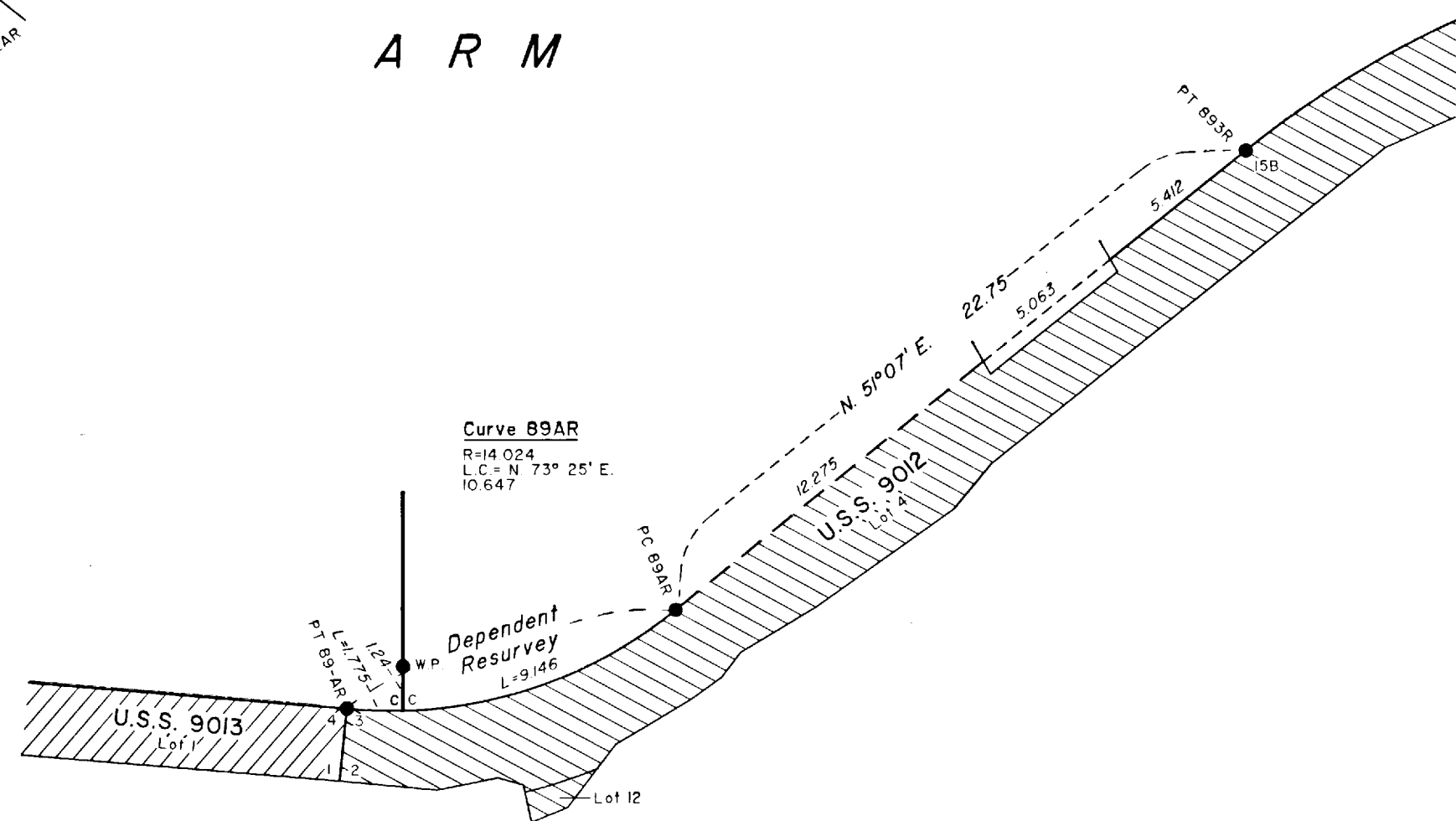
The history of surveys is contained in the field notes.

This plat and the field notes represent the dependent resurvey of a portion of U.S. Survey No. 9012 and a portion of U.S. Survey No. 9013; and the survey of the east boundary of Township 10 North, Range 2 West, Seward Meridian, Alaska. The subdivisional lines of the township were surveyed by protraction as shown on this plat.

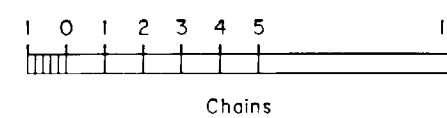
This survey was executed by John M. Baldessari, Cadastral Surveyor, September 10, 1974, through September 23, 1978, in accordance with the specifications set forth in the Manual of Surveying Instructions, 1973, Special Instructions for Group No. 178, Alaska, dated June 19, 1974, approved July 5, 1974, and Amended Special Instructions dated July 23, 1974, approved July 23, 1974, and Assignment Instructions dated August 23, 1974, and July 1, 1975.

At W.P.
Latitude 60° 59' 01.88" N.
Longitude 149° 32' 04.84" W.
(NAD 27)

TURNAGAIN ARM



ENLARGED DIAGRAM A



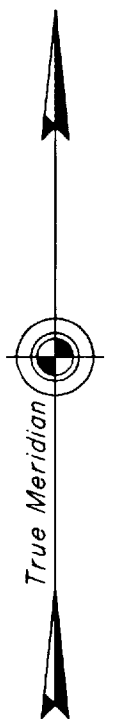
Acceptance of this survey does not purport to transfer any interest in submerged lands to which the state of Alaska is entitled under the Equal Footing Doctrine and Section 6(m) of the Alaska Statehood Act, P.L. 85-508, notwithstanding the use, location, or absence of meander lines to depict water bodies.

UNITED STATES DEPARTMENT OF THE INTERIOR
BUREAU OF LAND MANAGEMENT
Anchorage, Alaska

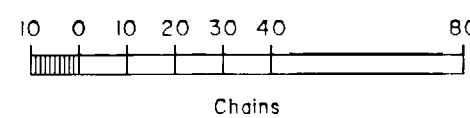
This plat is strictly conformable to the approved field notes, and the survey, having been correctly executed in accordance with the requirements of law and the regulations of this Bureau, is hereby accepted.

For the Director

James L. Pinkerton
Date JANUARY 26, 2000
Deputy State Director for Cadastral Survey,
Alaska



Mean Magnetic Declination 26° E.



Area Surveyed: 1,088.81 Acres