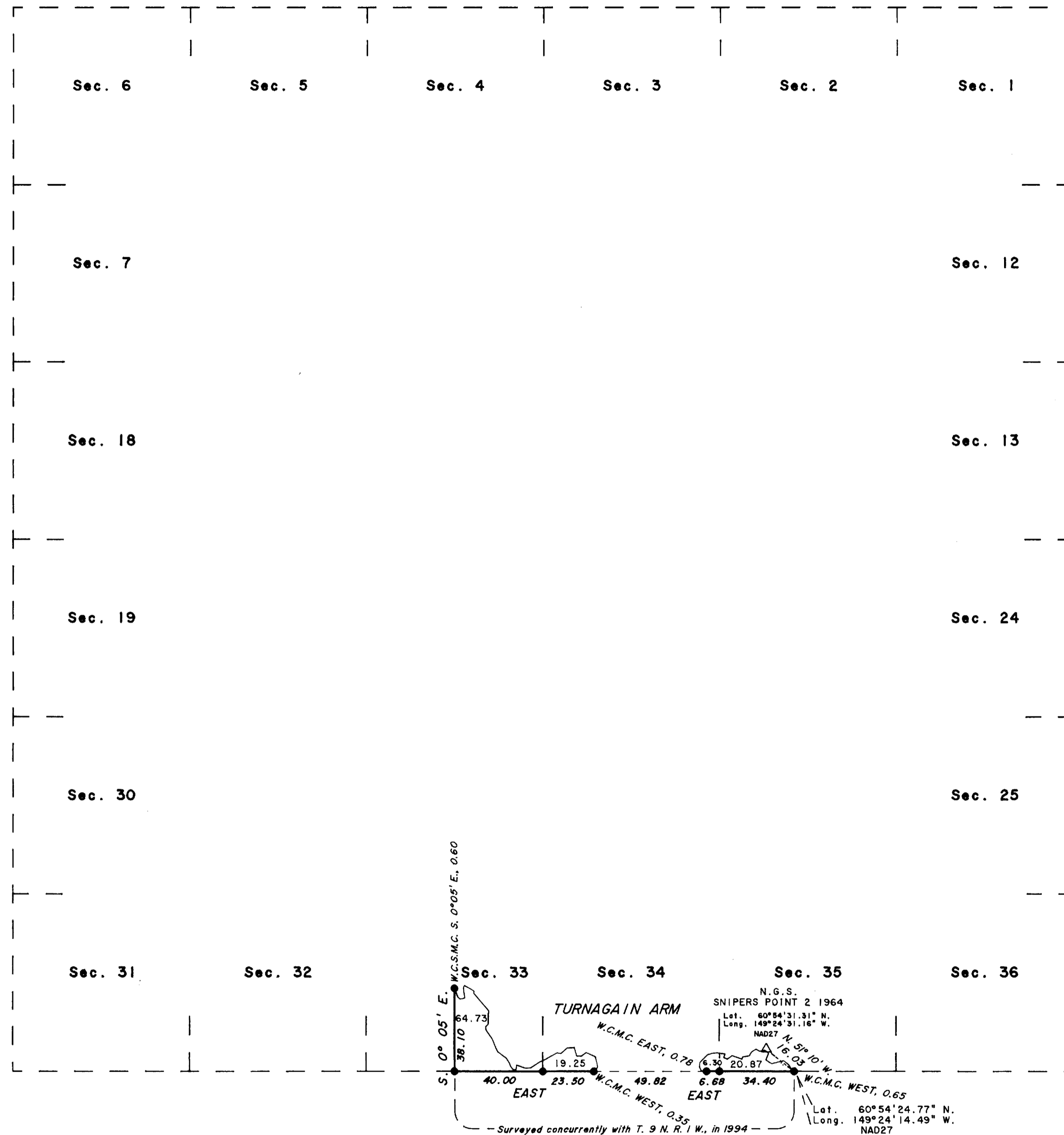
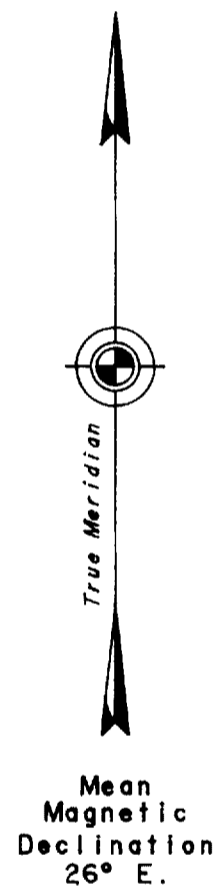


# TOWNSHIP 10 NORTH, RANGE 1 WEST, OF THE SEWARD MERIDIAN, ALASKA



This plat and the field notes describe the survey of a portion of the south boundary, a portion of the subdivisional lines, and a portion of the meanders of Township 10 North, Range 1 West, Seward Meridian, Alaska.

This survey was executed by Steven R. Stokke, Cadastral Surveyor, May 21 through June 23, 1994, in accordance with the specifications set forth in the Manual of Surveying Instructions, 1973, Special Instructions for Group No. 628, Alaska, dated April 7, 1994, approved April 25, 1994, and Assignment Instructions dated May 1, 1994.



Acceptance of this survey does not purport to transfer any interest in submerged lands to which the State of Alaska is entitled under the Equal Footing Doctrine and Section 6(m) of the Alaska Statehood Act, P.L. 85-508, notwithstanding the use, location, or absence of meander lines to depict water bodies.

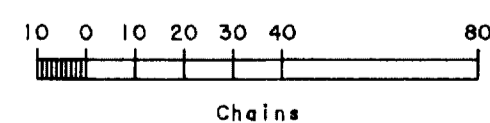
UNITED STATES DEPARTMENT OF THE INTERIOR  
BUREAU OF LAND MANAGEMENT  
Anchorage, Alaska

This plat is strictly conformable to the approved field notes, and the survey, having been correctly executed in accordance with the requirements of law and the regulations of this Bureau, is hereby accepted.

For the Director

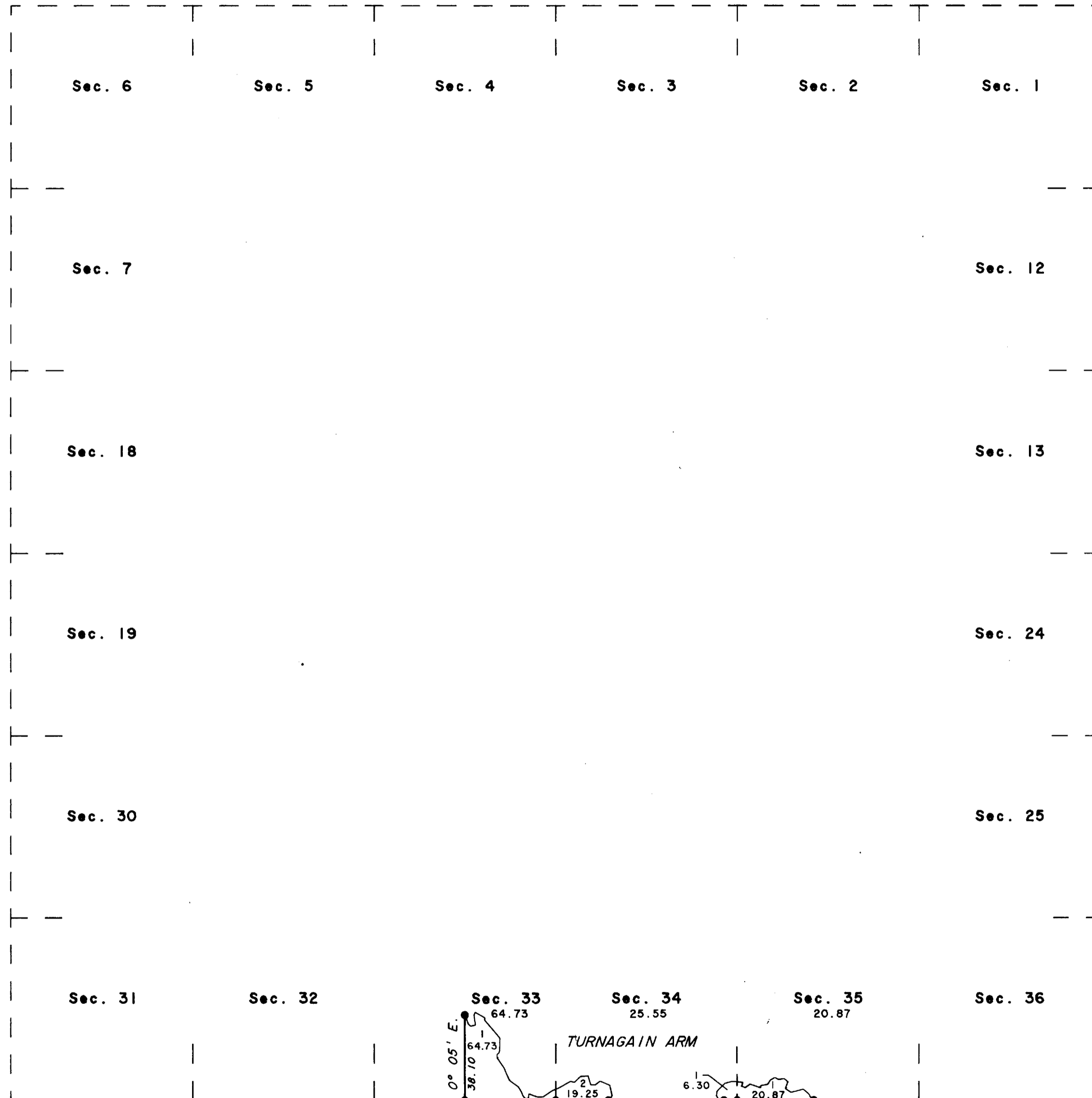
*George P. Quinn*      5 November 1996  
Date

Deputy State Director for Cadastral Survey, Alaska



Area Surveyed: 111.15 Acres

TOWNSHIP 10 NORTH, RANGE 1 WEST, OF THE SEWARD MERIDIAN, ALASKA  
 SUPPLEMENTAL PLAT



This supplemental plat showing the creation of lots in secs. 33, 34 and 35, Township 10 North, Range 1 West, Seward Meridian, Alaska, is based upon the plat of Township 10 North, Range 1 West, Seward Meridian, Alaska, accepted November 5, 1996.

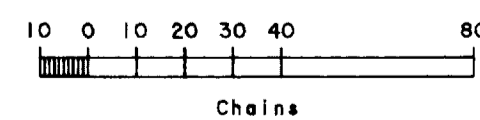
Acceptance of this survey does not purport to transfer any interest in submerged lands to which the State of Alaska is entitled under the Equal Footing Doctrine and Section 6(m) of the Alaska Statehood Act, P.L. 85-508, notwithstanding the use, location, or absence of meander lines to depict water bodies.

UNITED STATES DEPARTMENT OF THE INTERIOR  
 BUREAU OF LAND MANAGEMENT  
 Anchorage, Alaska

This supplemental plat is based upon the official records and, having been correctly prepared in accordance with the regulations of this Bureau, is hereby accepted.

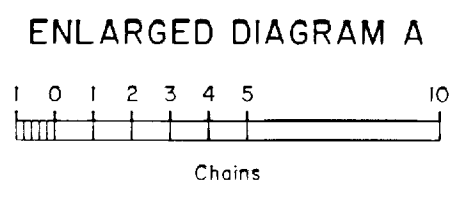
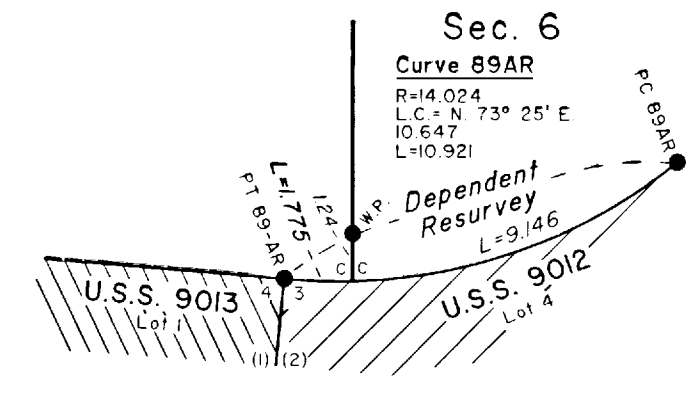
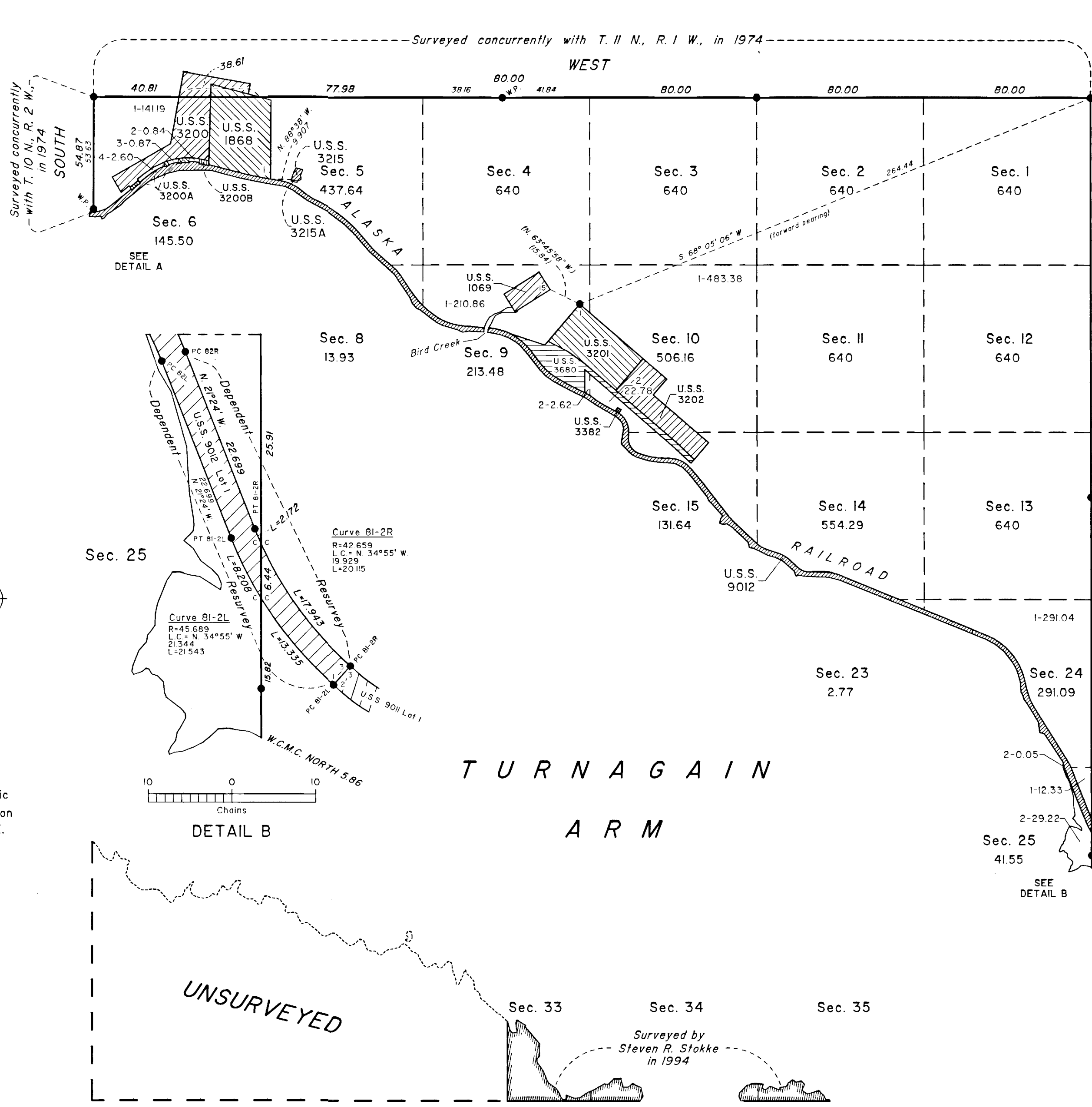
For the Director

*Jerry Pinkerton* August 4, 1997  
 Acting Deputy State Director for Cadastral Survey, Alaska Date



Area Surveyed: 111.15 Acres

# TOWNSHIP 10 NORTH, RANGE 1 WEST, OF THE SEWARD MERIDIAN, ALASKA



The history of surveys is contained in the field notes.

This plat and the field notes represent the dependent resurvey of portions of U.S. Survey No. 9012; the survey of the Seward Meridian through Township 10 North between Range 1 East and Range 1 West; and the meanders of Township 10 North, Range 1 West, Seward Meridian, Alaska. The subdivisional lines of the township were surveyed by protraction as shown on this plat.

This survey was executed by John M. Baldessari, Cadastral Surveyor, September 10, 1974, through September 23, 1978, in accordance with the specifications set forth in the Manual of Surveying Instructions, 1973, Special Instructions for Group No. 178, Alaska, dated June 19, 1974, approved July 5, 1974, and Amended Special Instructions dated July 23, 1974, approved July 23, 1974; and Assignment Instructions dated August 23, 1974, and July 1, 1975.

The hydrography shown on this plat identifies the meanders along the mean high tide line and ordinary high water line of water bodies segregated from the land area. The meanders are photogrammetrically interpreted and digitized from color infrared photography flown in July 1978 and August 1984 and black and white orthophotography flown in August 1984 by the National Aeronautics and Space Administration. The digital meander line data pictorially represent the meanders used to calculate the areas shown on this plat.

Acceptance of this survey does not purport to transfer any interest in submerged lands to which the state of Alaska is entitled under the Equal Footing Doctrine and Section 6(m) of the Alaska Statehood Act, P.L. 85-508, notwithstanding the use, location, or absence of meander lines to depict water bodies.

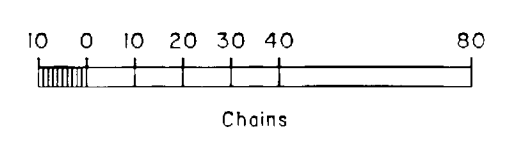
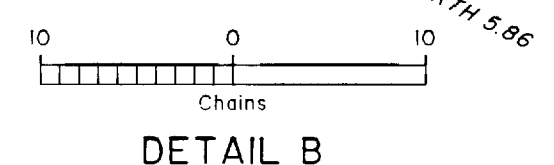
UNITED STATES DEPARTMENT OF THE INTERIOR  
BUREAU OF LAND MANAGEMENT  
Anchorage, Alaska

This plat is strictly conformable to the approved field notes, and the survey, having been correctly executed in accordance with the requirements of law and the regulations of this Bureau, is hereby accepted.

For the Director  
*Jerry L. Pinkerton*  
Date JANUARY 26, 2000  
Deputy State Director for Cadastral Survey,  
Alaska

True Meridian

Mean Magnetic Declination 26° E.



Area Surveyed: 6,818.05 Acres