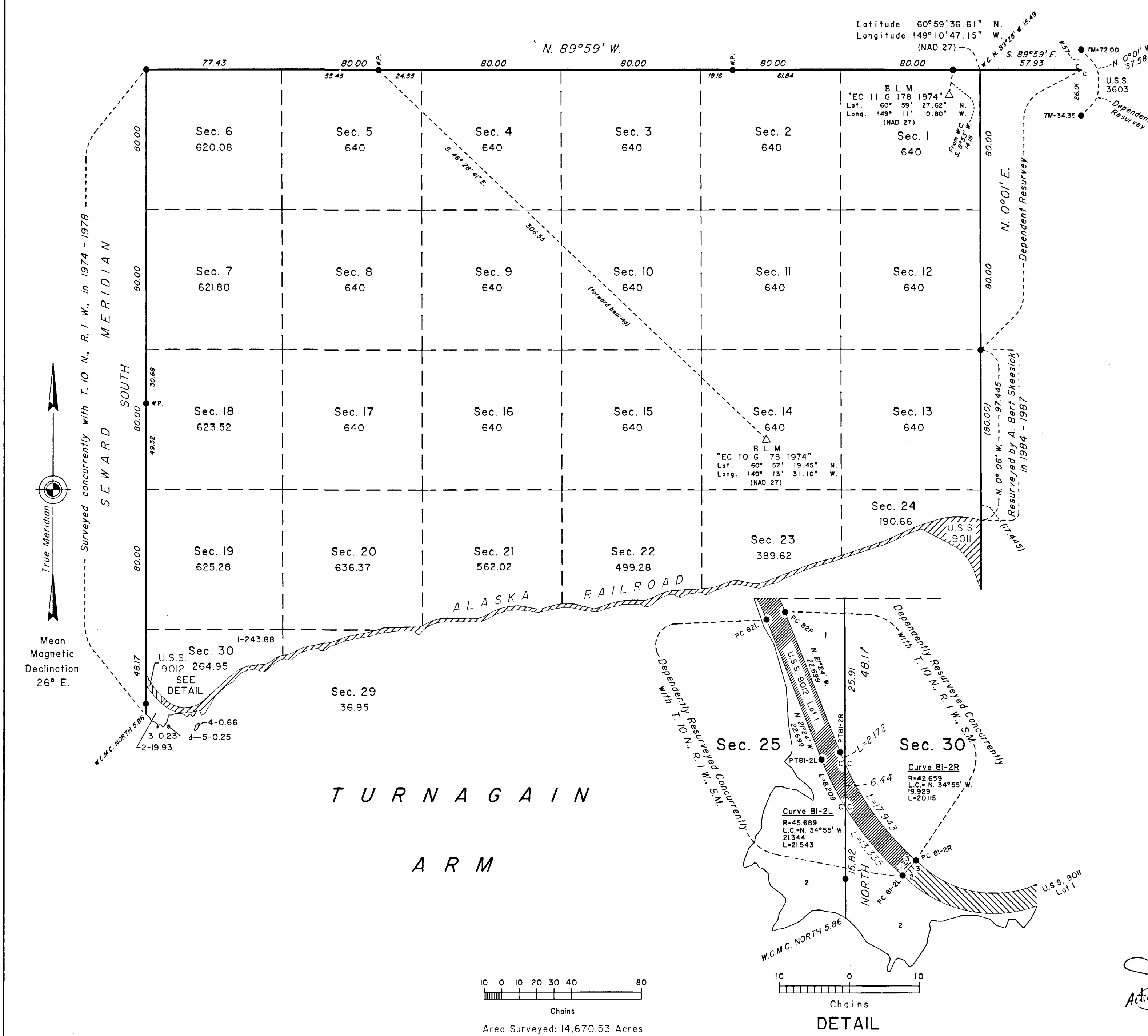


TOWNSHIP 10 NORTH, RANGE 1 EAST, OF THE SEWARD MERIDIAN, ALASKA



The history of surveys is contained in the field notes.

This plat and the field notes represent the dependent resurvey of a portion of U.S. Survey No. 3603 and a portion of the north boundary and a portion of the west boundary of Township 10 North, Range 2 East; and the survey of the north boundary of Township 10 North, Range 1 East, Seward Meridian, Alaska. The subdivisional lines of the township were surveyed by protraction as shown on this plat.

This survey was executed by John M. Baldessari, Cadastral Surveyor, September 10, 1974, through September 23, 1978, in accordance with the specifications set forth in the Manual of Surveying Instructions, 1973, Special Instructions for Group No. 178, Alaska, dated June 19, 1974, approved July 5, 1974, and Amended Special Instructions dated July 23, 1974, approved July 23, 1974, and Assignment Instructions dated August 23, 1974, and July 1, 1975.

Acceptance of this survey does not purport to transfer any interest in submerged lands to which the state of Alaska is entitled under the Equal Footing Doctrine and Section 6(m) of the Alaska Statehood Act, P.L. 85-508, notwithstanding the use, location, or absence of meander lines to depict water bodies.

UNITED STATES DEPARTMENT OF THE INTERIOR
BUREAU OF LAND MANAGEMENT
Anchorage, Alaska

This plat is strictly conformable to the approved field notes, and the survey, having been correctly executed in accordance with the requirements of law and the regulations of this Bureau, is hereby accepted.

For the Director
Deputy State Director for Cadastral Survey, Alaska
Date JANUARY 26, 2000