





28 27  
33 34

| ACQUISITION TRACT REGISTER |            |         |         |
|----------------------------|------------|---------|---------|
| TRACT NO.                  | LAND OWNER | ACREAGE | REMARKS |
|                            |            |         |         |
|                            |            |         |         |
|                            |            |         |         |

(TYPE) **TERMINARY**  
**PROJECT MAP**  
 AGENCY: DEPARTMENT OF THE ARMY  
 TERRITORY: ALASKA

JUDICIAL DIVISION: FOURTH  
 DIVISION: NORTH PACIFIC  
 DISTRICT: ALASKA

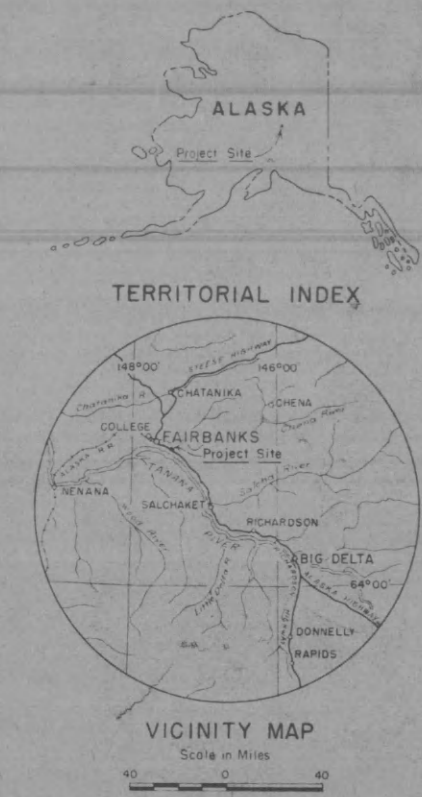
ALASKAN COMMAND

— LOCATION OF PROJECT —  
 9.5 MILES SE OF FAIRBANKS  
 89.5 MILES NW OF DELTA JUNCTION

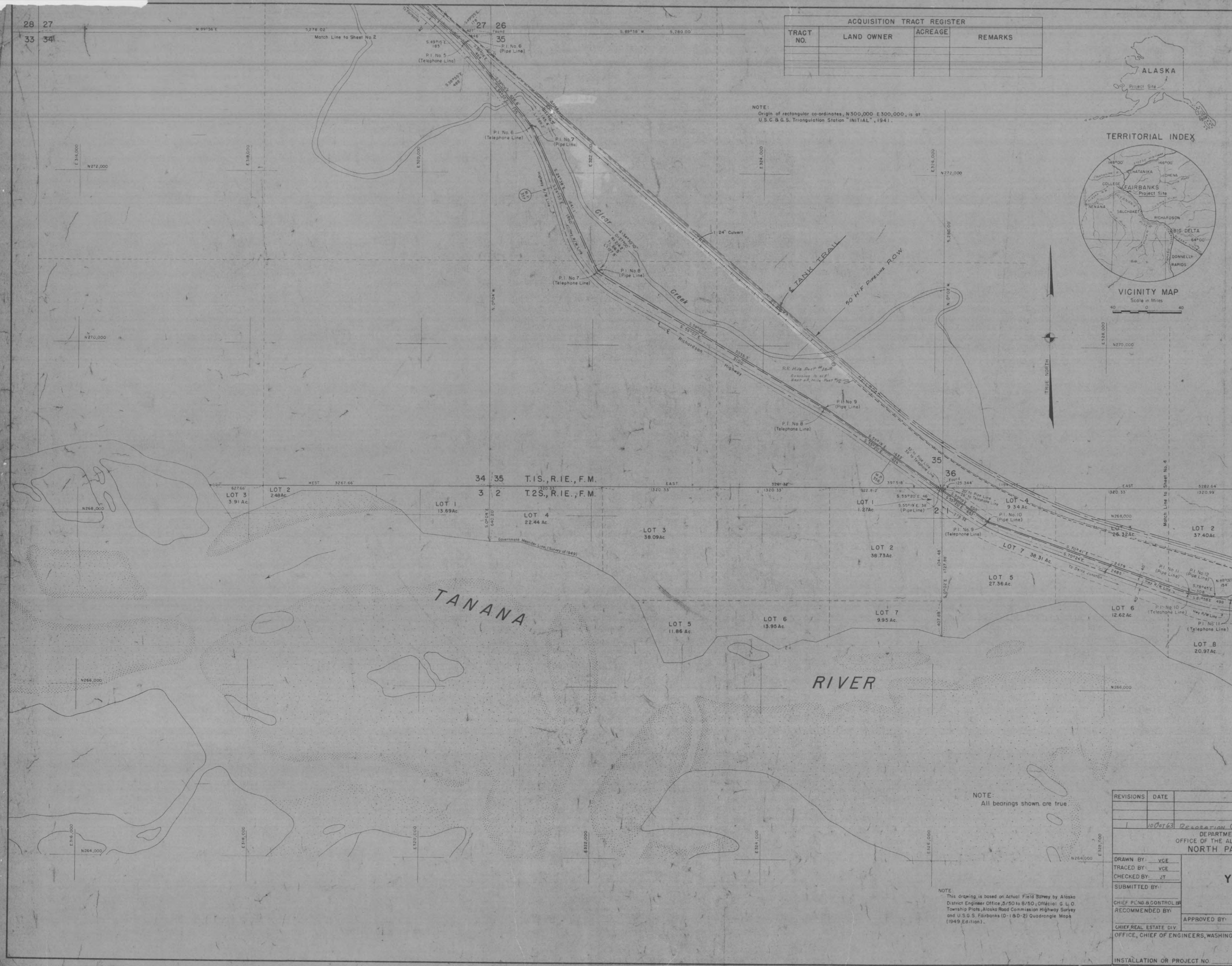
— TRANSPORTATION FACILITIES —  
 RAILROADS: THE ALASKA RAILROAD  
 TERRITORIAL ROADS: STEESE HIGHWAY  
 FEDERAL ROADS: RICHARDSON HIGHWAY  
 ALASKA HIGHWAY  
 AIRLINES: ALASKA & PAN AMERICAN

— ACQUISITION —  
 TOTAL ACRES ACQUIRED: \_\_\_\_\_  
 ACRES FEE: \_\_\_\_\_  
 ACRES TRANSFERRED: \_\_\_\_\_  
 ACRES LEASED: \_\_\_\_\_  
 ACRES LESSER INTERESTS: \_\_\_\_\_  
 — DISPOSAL —  
 TOTAL ACRES DISPOSED OF: \_\_\_\_\_  
 ACRES SOLD: \_\_\_\_\_  
 ACRES TRANSFERRED: \_\_\_\_\_  
 ACRES LEASES TERMINATED: \_\_\_\_\_  
 ACRES LESSER INT'S. TERM: \_\_\_\_\_

— LEGEND —  
 NOTE: USE SYMBOLS FROM FM-21-30 (WAR DEPT. BASIC FIELD MANUAL) PAGES 21 TO 27 INCL.  
 EXCEPT  
 RESERVATION LINE: ————  
 RESERVATION LINE (ACTUAL SURVEY): ————  
 DAM SITE (TAKING LINE): ————  
 RESERVOIR SITE (TAKING LINE): ————  
 CONTOUR LINES: ————  
 AVIGATION EASEMENTS: ————  
 TRACT NUMBER: 99



NOTE:  
 Origin of rectangular co-ordinates, N 500,000 E 500,000, is at U.S.G. & S. Triangulation Station "INITIAL", 1941.



NOTE:  
 All bearings shown are true

NOTE:  
 This drawing is based on Actual Field Survey by Alaska District Engineer Office 3/50 to 9/50, Official S. L. O. Township Plats, Alaska Road Commission Highway Survey and U.S.G. S. Fairbanks (D-1 & D-2) Quadrangle Map (1949 Edition).

| REVISIONS | DATE     | BY                         |
|-----------|----------|----------------------------|
| 1         | 10/05/63 | REGISTRATION OF TANK TRAIL |

DEPARTMENT OF THE ARMY  
 OFFICE OF THE ALASKA DISTRICT ENGINEER  
 NORTH PACIFIC DIVISION

**REAL ESTATE**  
**YUKON COMMAND**  
**TANK TRAIL**

DRAWN BY: YGE  
 TRACED BY: YGE  
 CHECKED BY: JT  
 SUBMITTED BY: \_\_\_\_\_  
 CHIEF PLNG & CONTROL BY: \_\_\_\_\_  
 RECOMMENDED BY: \_\_\_\_\_  
 APPROVED BY: \_\_\_\_\_ DATE: \_\_\_\_\_  
 CHIEF REAL ESTATE DIV. DISTRICT ENGINEER  
 OFFICE, CHIEF OF ENGINEERS, WASHINGTON, D.C. SCALE IN FEET 1" = 400'  
 400 0 400 800  
 INSTALLATION OR PROJECT NO. SHEET 3 OF DRAWING NO. 44-20-99



| ACQUISITION TRACT REGISTER |            |         |         |
|----------------------------|------------|---------|---------|
| TRACT NO.                  | LAND OWNER | ACREAGE | REMARKS |
|                            |            |         |         |
|                            |            |         |         |
|                            |            |         |         |



(TYPE) **PRELIMINARY**  
**PROJECT MAP**  
 AGENCY-DEPARTMENT OF THE ARMY  
 TERRITORY-ALASKA  
 JUDICIAL DIVISION-FOURTH  
 DIVISION-NORTH PACIFIC  
 DISTRICT-ALASKA  
 ALASKAN COMMAND  
 LOCATION OF PROJECT  
 11 MILES SE. OF FAIRBANKS  
 88 MILES NW OF DELTA JUNCTION  
 TRANSPORTATION FACILITIES  
 RAILROADS-THE ALASKA RAILROAD  
 TERRITORIAL ROADS-SEESE HIGHWAY  
 FEDERAL ROADS-RICHARDSON HIGHWAY  
 ALASKA HIGHWAY  
 AIRLINES-ALASKA & PAN AMERICAN



NOTE:  
 Origin of rectangular co-ordinates, N300,000 E300,000, is at U.S.C. & G.S. Triangulation Station "INITIAL", 1941.

NOTE:  
 This drawing is based on Actual Field Survey by Alaska District Engineer Office, 5/50 to 8/50, Official G.L.O. Township Plots, Alaska Road Commission Highway Survey and U.S.G.S. Fairbanks (D-1) Quadrangle Map (1949 Edition).

NOTE:  
 All bearings shown are true.

ACQUISITION  
 TOTAL ACRES ACQUIRED  
 ACRES FEE  
 ACRES TRANSFERRED  
 ACRES LEASED  
 ACRES LESSER INTERESTS  
 DISPOSAL  
 TOTAL ACRES DISPOSED OF  
 ACRES SOLD  
 ACRES TRANSFERRED  
 ACRES LEASES TERMINATED  
 ACRES LESSER INT'S. TERM.

LEGEND  
 NOTE: USE SYMBOLS FROM FM-21-30 (WAR DEPT. BASIC FIELD MANUAL) PAGES 21 TO 27 INCL  
 EXCEPT  
 RESERVATION LINE  
 RESERVATION LINE (METAL SURVEY)  
 DAM SITE (PAKING LINE)  
 RESERVOIR SITE (PAKING LINE)  
 CONTOUR LINES  
 AVIGATION EASEMENTS  
 TRACT NUMBER 99

| REVISIONS | DATE     | BY                     |
|-----------|----------|------------------------|
| 1         | 10/01/53 | REVISION OF TANK TRAIL |

DEPARTMENT OF THE ARMY  
 OFFICE OF THE ALASKA DISTRICT ENGINEER  
 NORTH PACIFIC DIVISION

**REAL ESTATE**  
**YUKON COMMAND**  
**TANK TRAIL**

DRAWN BY: VGE  
 TRACED BY: VGE  
 CHECKED BY: JT  
 SUBMITTED BY:  
 CHIEF PLNG. & CONTROL  
 RECOMMENDED BY:  
 APPROVED BY: \_\_\_\_\_ DATE: \_\_\_\_\_  
 CHIEF, REAL ESTATE DIV. DISTRICT ENGINEER  
 OFFICE, CHIEF OF ENGINEERS, WASHINGTON, D.C. SCALE IN FEET 1" = 400'  
 400 800  
 INSTALLATION OR PROJECT NO. SHEET 4 OF DRAWING NO. 44-20-43

DRAWING NUMBER 99





(TYPE) **PRELIMINARY**  
**PROJECT MAP**  
AGENCY: DEPARTMENT OF THE ARMY  
ALASKA

JUDICIAL DIVISION **FOURTH**  
DIVISION **NORTH PACIFIC**  
DISTRICT **ALASKA**  
ALASKAN COMMAND

— **LOCATION OF PROJECT** —  
**13 MILES SE OF FAIRBANKS**  
**86 MILES NW OF DELTA JUNCTION**

— **TRANSPORTATION FACILITIES** —  
RAILROADS **THE ALASKA RAILROAD**  
TERRITORIAL ROADS **STEESE HIGHWAY**  
FEDERAL ROADS **RICHARDSON HIGHWAY**  
**ALASKA HIGHWAY**  
AIRLINES **ALASKA & PAN AMERICAN**

— **ACQUISITION** —  
TOTAL ACRES ACQUIRED \_\_\_\_\_  
ACRES FEE \_\_\_\_\_  
ACRES TRANSFERRED \_\_\_\_\_  
ACRES LEASED \_\_\_\_\_  
ACRES LESSER INTERESTS \_\_\_\_\_

▨ — **DISPOSAL** —  
TOTAL ACRES DISPOSED OF \_\_\_\_\_  
ACRES SOLD \_\_\_\_\_  
ACRES TRANSFERRED \_\_\_\_\_  
ACRES LEASES TERMINATED \_\_\_\_\_  
ACRES LESSER INT'S. TERM. \_\_\_\_\_

— **LEGEND** —

NOTE: USE SYMBOLS FROM FM-21-30 (WAR DEPT BASIC FIELD MANUAL) PAGES 21 TO 27 INCL.

EXCEPT

RESERVATION LINE

RESERVATION LINE (ACTUAL SURVEY)

DAM SITE (TAKING LINE)

RESERVOIR SITE (TAKING LINE)

CONTOUR LINES

AVIGATION EASEMENTS

TRACT NUMBER **99**

NOTE: Origin of rectangular co-ordinates, N 300,000 E 300,000, is at U.S.C. & G.S. Triangulation Station "INITIAL", 1941.

NOTE: This drawing is based on Actual Field Survey by Alaska District Engineer Office, 5/50 to 8/50, Official G.L.D. Townsite Plats, Alaska Road Commission Highway Survey and U.S.G.S. Fairbanks (C-1) Quadrangle Map (1951 Edition).

ACQUISITION TRACT REGISTER

| TRACT NO. | LAND OWNER | ACREAGE | REMARKS |
|-----------|------------|---------|---------|
|           |            |         |         |
|           |            |         |         |
|           |            |         |         |

| REVISIONS | DATE | BY |
|-----------|------|----|
|           |      |    |
|           |      |    |

1. *W.P. Relocation of Tank Trail*

DEPARTMENT OF THE ARMY  
OFFICE OF THE ALASKA DISTRICT ENGINEER  
NORTH PACIFIC DIVISION

REAL ESTATE  
**YUKON COMMAND**  
**TANK TRAIL**

DRAWN BY: **VCE**  
TRACED BY: **VCE**  
CHECKED BY: **JT**  
SUBMITTED BY: \_\_\_\_\_  
CHIEF PLNG & CONTROL BR RECOMMENDED BY: \_\_\_\_\_  
APPROVED BY: \_\_\_\_\_ DATE: \_\_\_\_\_  
CHIEF, REAL ESTATE DIV. DISTRICT ENGINEER  
OFFICE, CHIEF OF ENGINEERS, WASHINGTON, D.C. SCALE IN FEET 1" = 400'

INSTALLATION OR PROJECT NO. \_\_\_\_\_ SHEET 5 OF \_\_\_\_\_ DWG NO. **A4-20-43**  
ENG. FORM 1456-4

NOTE: All bearings shown are true.

16 15  
21 22  
Flood Control  
Reservation Boundary

RESTRICTED



| ACQUISITION TRACT REGISTER |            |         |         |
|----------------------------|------------|---------|---------|
| TRACT NO.                  | LAND OWNER | ACREAGE | REMARKS |
|                            |            |         |         |
|                            |            |         |         |
|                            |            |         |         |

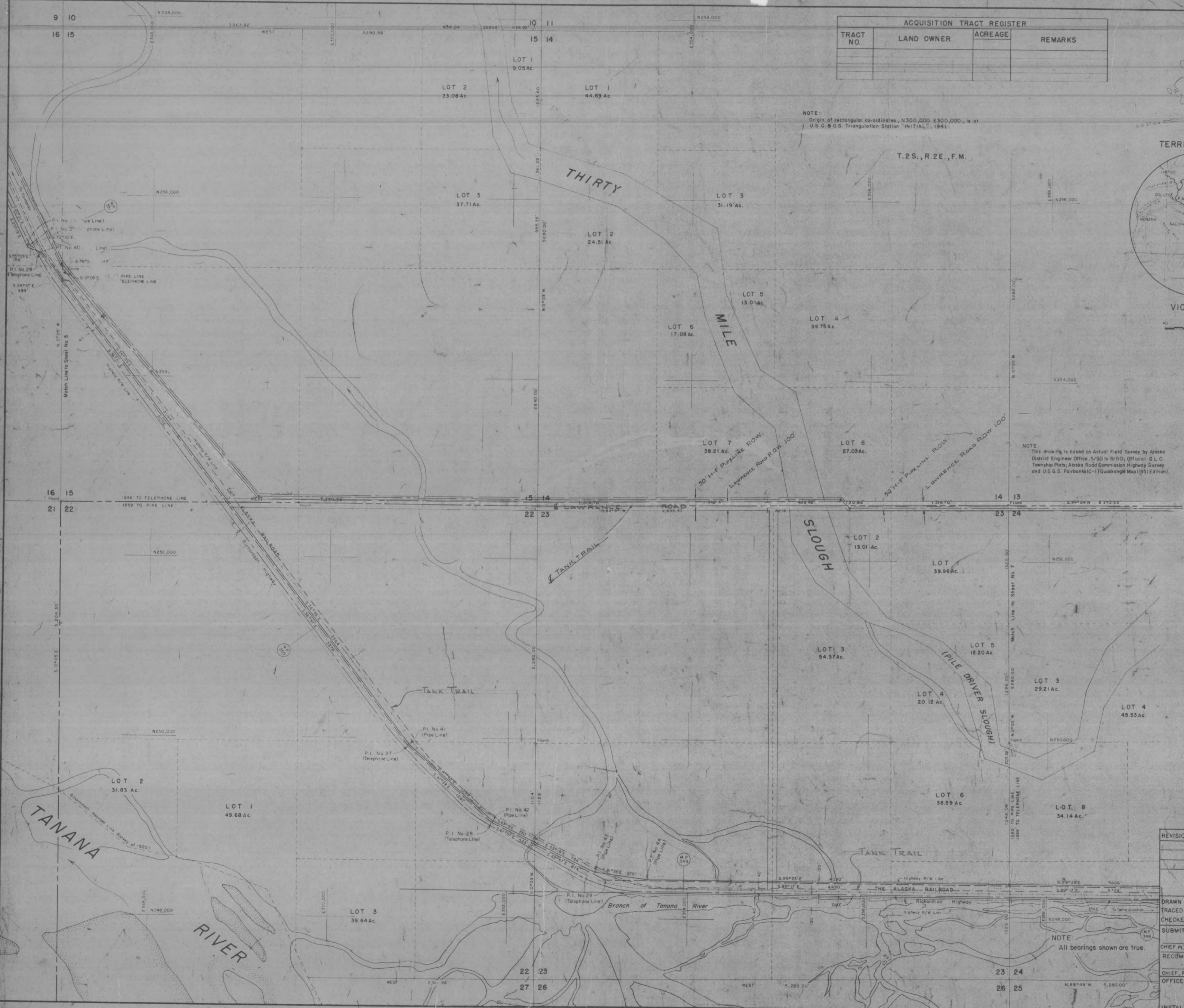
(TYPE) PRELIMINARY  
**PROJECT MAP**  
 AGENCY: DEPARTMENT OF THE ARMY  
 TERRITORY: ALASKA  
 JUDICIAL DIVISION: FOURTH  
 DIVISION: NORTH PACIFIC  
 DISTRICT: ALASKA



ALASKAN COMMAND  
 — LOCATION OF PROJECT —  
 15.5 MILES SE OF FAIRBANKS  
 93.5 MILES NW OF DELTA JUNCTION  
 — TRANSPORTATION FACILITIES —  
 RAILROADS: THE ALASKA RAILROAD  
 TERRITORIAL ROADS: STEESE HIGHWAY  
 FEDERAL ROADS: RICHARDSON HIGHWAY  
 ALASKA HIGHWAY  
 AIRLINES: ALASKA & PAN AMERICAN

— ACQUISITION —  
 TOTAL ACRES ACQUIRED \_\_\_\_\_  
 ACRES FEE \_\_\_\_\_  
 ACRES TRANSFERRED \_\_\_\_\_  
 ACRES LEASED \_\_\_\_\_  
 ACRES LESSER INTERESTS \_\_\_\_\_  
 — DISPOSAL —  
 TOTAL ACRES DISPOSED OF \_\_\_\_\_  
 ACRES SOLD \_\_\_\_\_  
 ACRES TRANSFERRED \_\_\_\_\_  
 ACRES LEASES TERMINATED \_\_\_\_\_  
 ACRES LESSER INT'S. TERM \_\_\_\_\_

— LEGEND —  
 NOTE: USE SYMBOLS FROM FM-21-30 (WAR DEPT BASIC FIELD MANUAL) PAGES 21 TO 27 INCL.  
 EXCEPT  
 RESERVATION LINE \_\_\_\_\_  
 RESERVATION LINE (ACTUAL SURVEY) \_\_\_\_\_  
 DAM SITE (TAKING LINE) \_\_\_\_\_  
 RESERVOIR SITE (TAKING LINE) \_\_\_\_\_  
 CONTOUR LINES \_\_\_\_\_  
 AVIGATION EASEMENTS \_\_\_\_\_  
 TRACT NUMBER \_\_\_\_\_



NOTE:  
 Origin of rectangular co-ordinates, N 300,000, E 300,000, is at  
 U.S. G.S. Triangulation Station "INITIAL", 1941.

NOTE:  
 This drawing is based on Actual Field Survey by Alaska  
 District Engineer Office, 5/50 to 8/50, Official G.L.C.  
 Township Plots, Alaska Road Commission Highway Survey  
 and U.S.G.S. Fairbanks (C-1) Quadrangle Map (1951 Edition).

REVISIONS

| NO. | DATE | BY |
|-----|------|----|
| 1   |      |    |

APPROVED BY: *REGULATION OF TANK TRAIL*  
 DEPARTMENT OF THE ARMY  
 OFFICE OF THE ALASKA DISTRICT ENGINEER  
 NORTH PACIFIC DIVISION

**REAL ESTATE**  
**YUKON COMMAND**  
**TANK TRAIL**

DRAWN BY: YCE  
 TRACED BY: YCE  
 CHECKED BY: JT  
 SUBMITTED BY:  
 CHIEF PLNG & CONTROL BR.  
 RECOMMENDED BY:  
 APPROVED BY: \_\_\_\_\_ DATE: \_\_\_\_\_  
 CHIEF, REAL ESTATE DIV. DISTRICT ENGINEER  
 OFFICE, CHIEF OF ENGINEERS, WASHINGTON, D.C.

SCALE IN FEET 1" = 400'  
 0 100 200 300 400

INSTALLATION OR PROJECT NO. SHEET 6 OF DWG NO A4-20-49.1  
 ENG FORM 1456-4

DRAWING NUMBER

DRAWING NUMBER

DRAWING NUMBER

DRAWING NUMBER



NOTE: Origin of rectangular co-ordinates, N 300,000 E 300,000, is at U.S.G. & G.S. Triangulation Station "INITIAL", 1941

| ACQUISITION TRACT REGISTER |            |         |         |
|----------------------------|------------|---------|---------|
| TRACT NO.                  | LAND OWNER | ACREAGE | REMARKS |
|                            |            |         |         |
|                            |            |         |         |
|                            |            |         |         |



(TYPE) PRELIMINARY  
**PROJECT MAP**  
AGENCY-DEPARTMENT OF THE ARMY  
TERRITORY-ALASKA  
JUDICIAL DIVISION-FOURTH  
DIVISION-NORTH PACIFIC  
DISTRICT-ALASKA  
ALASKAN COMMAND  
— LOCATION OF PROJECT —  
18 MILES SE OF FAIRBANKS  
91 MILES NW OF DELTA JUNCTION  
— TRANSPORTATION FACILITIES —  
RAILROADS-ALASKA RAILROAD  
TERRITORIAL ROADS-STEENSE HIGHWAY  
FEDERAL ROADS-RICHARDSON HIGHWAY  
ALASKA HIGHWAY  
AIRLINES-ALASKA & PAN AMERICAN



— ACQUISITION —  
TOTAL ACRES ACQUIRED  
ACRES FEE  
ACRES TRANSFERRED  
ACRES LEASED  
ACRES LESSER INTERESTS  
— DISPOSAL —  
TOTAL ACRES DISPOSED OF  
ACRES SOLD  
ACRES TRANSFERRED  
ACRES LEASES TERMINATED  
ACRES LESSER INT'S TERM.

— LEGEND —  
NOTE: USE SYMBOLS FROM FM-21-30 (WAR DEPT. BASIC FIELD MANUAL) PAGES 21 TO 27 INCL EXCEPT  
RESERVATION LINE  
RESERVATION LINE (ACTUAL SURVEY)  
DAM SITE (TANKING LINE)  
RESERVOIR SITE (TANKING LINE)  
CONTOUR LINES  
AVIGATION EASEMENTS  
TRACT NUMBER 99

NOTE: All bearings shown are true

NOTE: This drawing is based on actual Field Survey by Alaskan District Engineer's Office, 5/50 to 8/50. Official G.L.G. Township Plats, Alaska Road Commission Highway Survey and U.S.G.S. Fairbanks (1-1) Quadrangle Map (1952) Edition.

| REVISIONS | DATE | BY |
|-----------|------|----|
|           |      |    |

DEPARTMENT OF THE ARMY  
OFFICE OF THE ALASKA DISTRICT ENGINEER  
NORTH PACIFIC DIVISION

REAL ESTATE  
**YUKON COMMAND  
TANK TRAIL**

CHIEF PLNG & CONTROL GR  
RECOMMENDED BY: [Signature]  
APPROVED BY: [Signature] DATE: [Date]

CHIEF, REAL ESTATE DIV. DISTRICT ENGINEER  
OFFICE, CHIEF OF ENGINEERS, WASHINGTON, D.C.

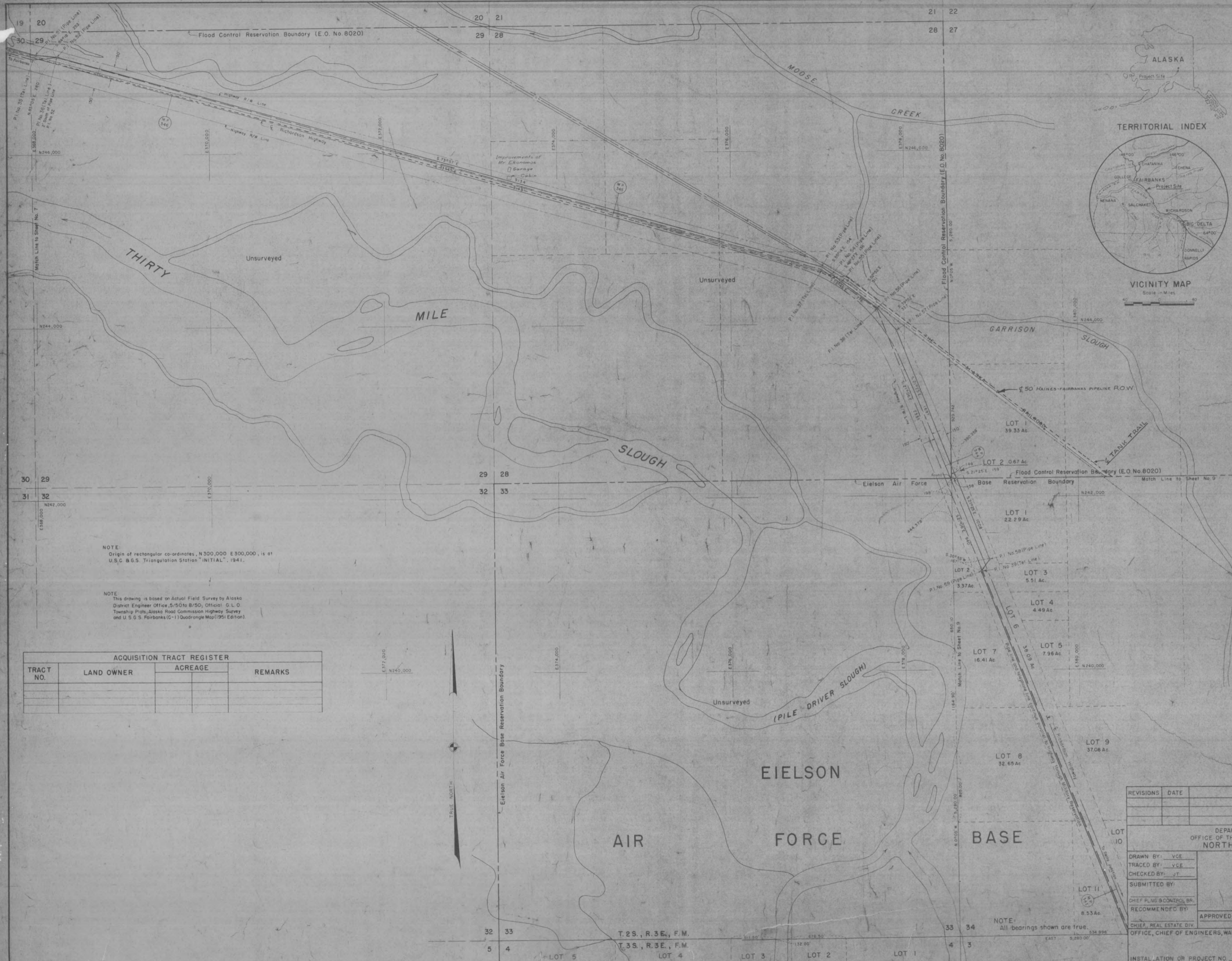
INSTALLATION OR PROJECT NO. [Blank]  
SHEET 7 OF [Blank] DWG. NO. A4-20-491  
ENG. FORM 1456-8

DRAWING NUMBER [Blank]

DRAWING NUMBER [Blank]

DRAWING NUMBER [Blank]





(TYPE) PRELIMINARY  
**PROJECT MAP**  
 AGENCY: DEPARTMENT OF THE ARMY  
 TERRITORY: ALASKA  
 JUDICIAL DIVISION: FOURTH  
 DIVISION: NORTH PACIFIC  
 DISTRICT: ALASKA  
 ALASKAN COMMAND

— LOCATION OF PROJECT —  
 20 MILES SE. OF FAIRBANKS  
 79 MILES NW OF DELTA JUNCTION

— TRANSPORTATION FACILITIES —  
 RAILROADS: THE ALASKA RAILROAD  
 TERRITORIAL ROADS: STEESE HIGHWAY, RICHARDSON HIGHWAY, ALASKA HIGHWAY  
 AIRLINES: ALASKA & PAN AMERICAN

— ACQUISITION —

TOTAL ACRES ACQUIRED: \_\_\_\_\_  
 ACRES FEE: \_\_\_\_\_  
 ACRES TRANSFERRED: \_\_\_\_\_  
 ACRES LEASED: \_\_\_\_\_  
 ACRES LESSER INTERESTS: \_\_\_\_\_

— DISPOSAL —

TOTAL ACRES DISPOSED OF: \_\_\_\_\_  
 ACRES SOLD: \_\_\_\_\_  
 ACRES TRANSFERRED: \_\_\_\_\_  
 ACRES LEASES TERMINATED: \_\_\_\_\_  
 ACRES LESSER INT'S. TERM: \_\_\_\_\_

— LEGEND —

NOTE: USE SYMBOLS FROM FM-21-30 (WAR DEPT. BASIC FIELD MANUAL) PAGES 21 TO 27 INCL.

EXCEPT

RESERVATION LINE: - - - - -  
 RESERVATION LINE (ACTUAL SURVEY): - - - - -  
 DAM SITE (TAKING LINE): - D -  
 RESERVOIR SITE (TAKING LINE): - R -  
 CONTOUR LINES: - 470 -  
 AVIGATION EASEMENTS: - - - - -  
 TRACT NUMBER: 99

NOTE  
 Origin of rectangular co-ordinates, N 300,000 E 300,000, is at U.S.C. & G.S. Triangulation Station "INITIAL", 1941.

NOTE  
 This drawing is based on Actual Field Survey by Alaska District Engineer Office, 5/50 to 8/50, Official G. L. O. Township Plats, Alaska Road Commission Highway Survey and U. S. G. S. Fairbanks (C-1) Quadrangle Map (1951 Edition).

| ACQUISITION TRACT REGISTER |            |         |         |
|----------------------------|------------|---------|---------|
| TRACT NO.                  | LAND OWNER | ACREAGE | REMARKS |
|                            |            |         |         |
|                            |            |         |         |
|                            |            |         |         |

| REVISIONS | DATE | BY |
|-----------|------|----|
|           |      |    |
|           |      |    |

DEPARTMENT OF THE ARMY  
 OFFICE OF THE ALASKA DISTRICT ENGINEER  
 NORTH PACIFIC DIVISION

REAL ESTATE  
**YUKON COMMAND  
 TANK TRAIL**

DRAWN BY: VGE  
 TRACED BY: VGE  
 CHECKED BY: JT  
 SUBMITTED BY: \_\_\_\_\_  
 RECOMMENDED BY: \_\_\_\_\_  
 APPROVED BY: \_\_\_\_\_ DATE: \_\_\_\_\_

CHIEF, REAL ESTATE DIV. \_\_\_\_\_  
 OFFICE, CHIEF OF ENGINEERS, WASHINGTON, D.C. \_\_\_\_\_

INSTALLATION OR PROJECT NO. \_\_\_\_\_  
 SCALE IN FEET 1"=400'  
 SHEET 8 OF 11 DWG NO A4-2049.1  
 ENG FORM 1156-B

DRAWING NUMBER