

PARTIALLY SURVEYED TOWNSHIP 2 SOUTH RANGE 2 EAST OF THE FAIRBANKS MERIDIAN, ALASKA

PROTRACTION DIAGRAM NO. F9-4 OFFICIALLY FILED 6/21/1960

STATUS OF PUBLIC DOMAIN
LAND AND MINERAL TITLES
AND ACQUIRED LANDS

MTP

FOR ORDERS EFFECTING DISPOSAL OR USE OF UN-IDENTIFIED LANDS WITHDRAWN FOR CLASSIFICATION MINERALS, WATER AND/OR OTHER PUBLIC PURPOSES REFER TO INDEX OF MISCELLANEOUS DOCUMENTS.

F83941 R/W Apts affects this Tp

* F024657 SS TA those islands in the Tanana River W/1 Secs 7, 16-19 and the N1/2 of Secs 20 & 21

F024657 SS Amdt PL 96-487 Sec 906(e) Top Filed

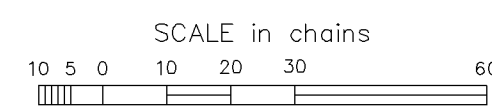
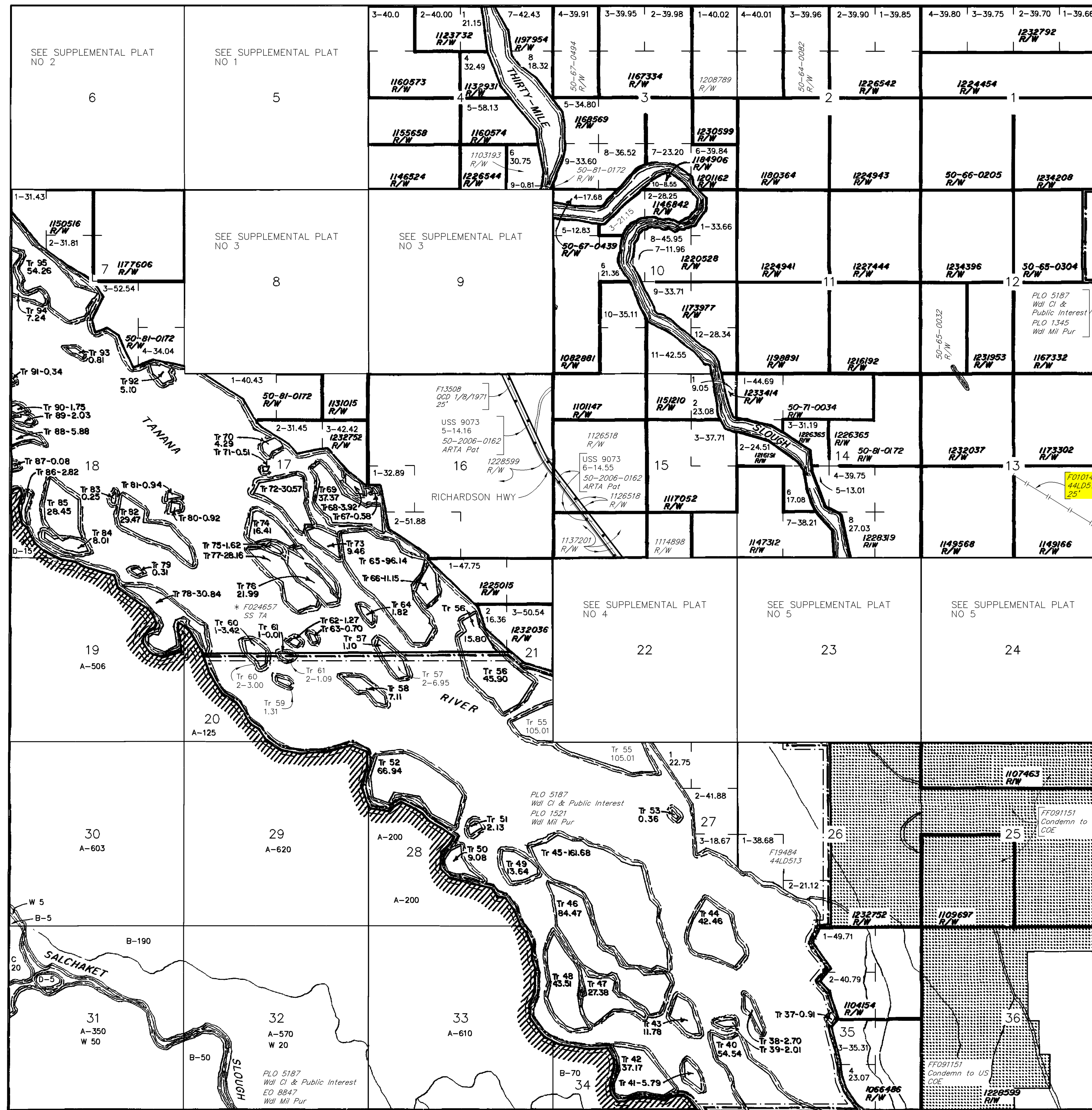
F44046 SS Amdt PL 96-487 Sec 906(e) Top Filed

F024657 SS Excl ARR W/1 Secs 23 & 24

F07678 R/W 100' affects USS 9073

* F91811 see as-built for true R/W alignment

F93353 Acquisitions by COE for various parcels Chena River Lakes Flood Control Project W/1 Secs 13 & 24



Lat 64°41'26.44"N
Long 147°16'20.20"W

WARNING:
This plot is the Bureau's Record of Title, and should be used only as a graphic display of the township survey data. Records hereon do not reflect title changes which may have been effected by lateral movements of rivers or other bodies of water. Refer to the cadastral surveys for official survey information.

CURRENT TO	
11-9-2006	

Acq
Fbx Mer
T 2 S
R 2 E
PV