

PROPERTY MAP
RICHARDSON HIGHWAY
 Big Delta To Fairbanks, Alaska

IN 4 SHEETS SCALE: 1" = 1000' SHEET NO. 1

OFFICE OF REAL ESTATE DIRECTOR, ALASKAN DEPARTMENT
 ANCHORAGE, ALASKA

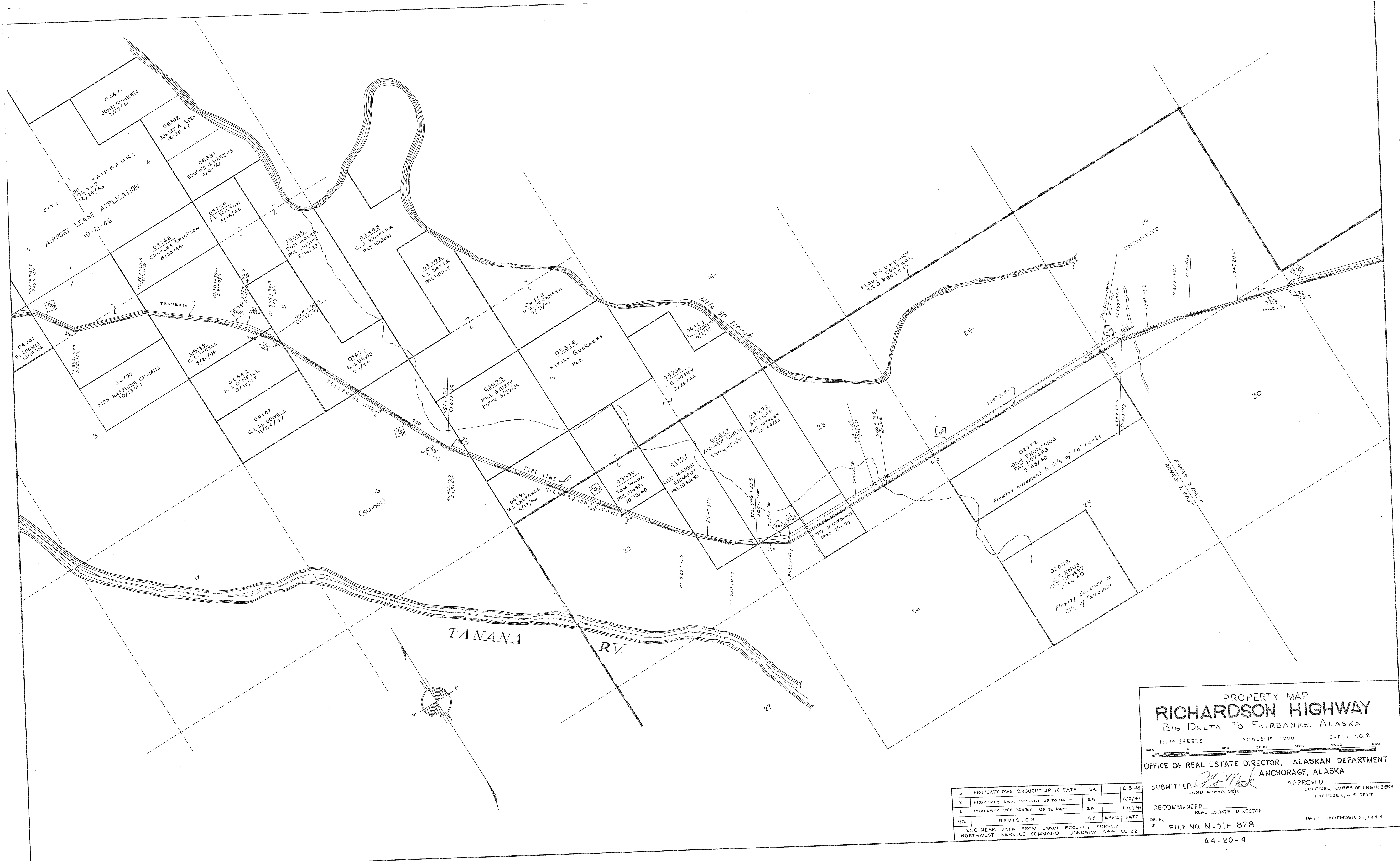
SUBMITTED *J.P. Mack* LAND APPRAISER APPROVED _____
 COLONEL, CORPS. OF ENGINEERS
 ENGINEER, ALS. DEPT.

RECOMMENDED _____
 REAL ESTATE DIRECTOR

OR - SA. DATE: NOVEMBER 22, 1944
 FILE NO. N.51F-828

3	PROPERTY DWG. BROUGHT UP TO DATE	S.A.	2-5-48
2	PROPERTY DWG. BROUGHT UP TO DATE	EA	6/2/47
1	PROPERTY DWG. BROUGHT UP TO DATE	EA	11/19/46
NO.	REVISION	BY	APPD. DATE
ENGINEER DATA FROM CANOL PROJECT SURVEY NORTHWEST SERVICE COMMAND JANUARY 1944 CL-22			

N
 51F
 828



PROPERTY MAP
RICHARDSON HIGHWAY
 Big Delta To Fairbanks, Alaska

IN 14 SHEETS SCALE: 1" = 1000' SHEET NO. 2

OFFICE OF REAL ESTATE DIRECTOR, ALASKAN DEPARTMENT
 ANCHORAGE, ALASKA

SUBMITTED *[Signature]* APPROVED
 LAND APPRAISER COLONEL, CORPS OF ENGINEERS
 ENGINEER, ALS. DEPT.

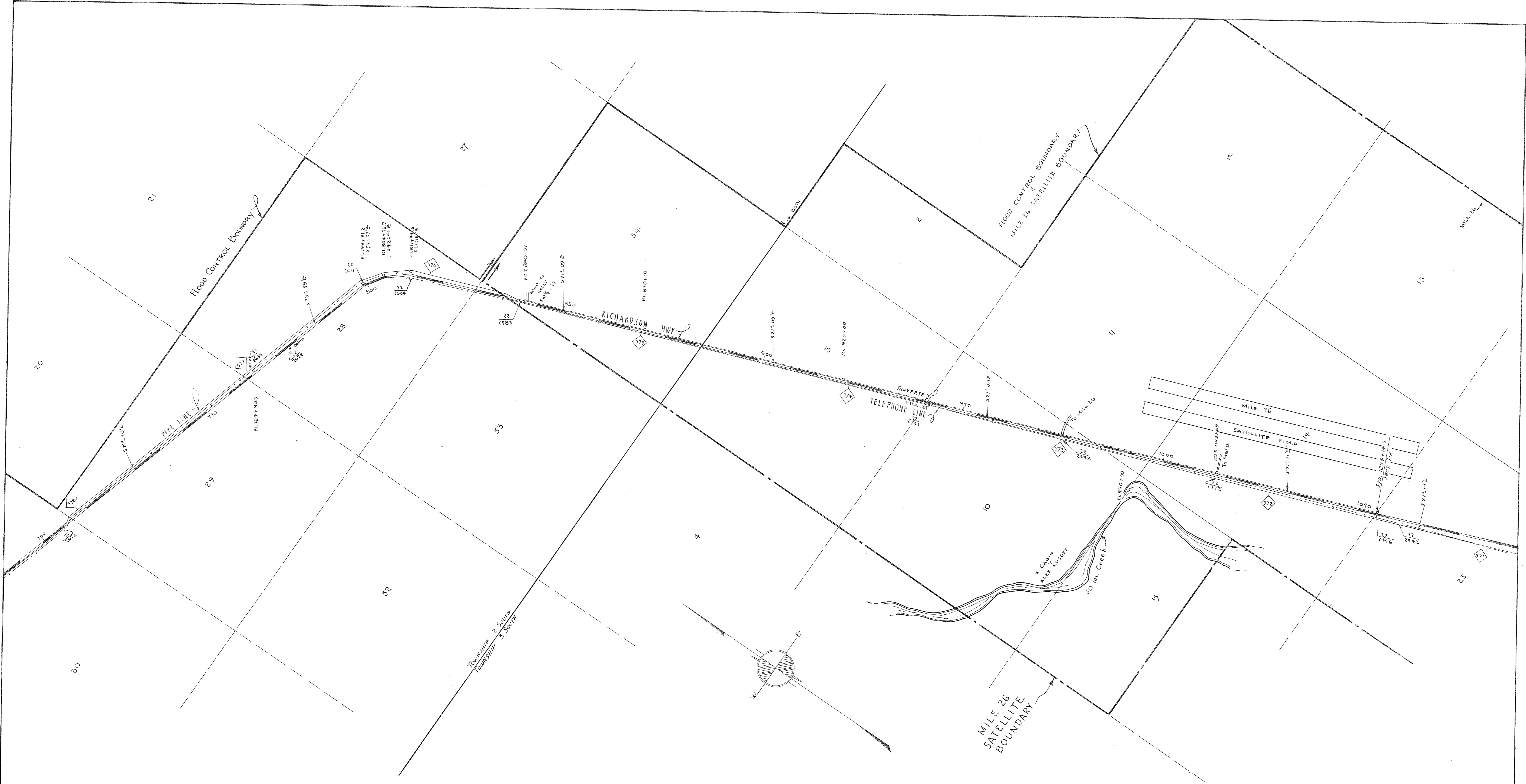
RECOMMENDED _____
 REAL ESTATE DIRECTOR

DR. EA. FILE NO. N-51F-828 DATE: NOVEMBER 21, 1944
 CK.

3	PROPERTY DWG. BROUGHT UP TO DATE	SA.	2-5-48
2	PROPERTY DWG. BROUGHT UP TO DATE	EA.	6/2/47
1	PROPERTY DWG. BROUGHT UP TO DATE	EA.	11/29/46
NO.	REVISION	BY	APPD. DATE
ENGINEER DATA FROM CANOL PROJECT SURVEY NORTHWEST SERVICE COMMAND JANUARY 1944 CL. 22			

N
 51F
 828

A4-20-4



PROPERTY MAP
RICHARDSON HIGHWAY
 Big Delta To Fairbanks, ALASKA
 IN 14 SHEETS SCALE: 1" = 1000' SHEET NO. 3

OFFICE OF REAL ESTATE DIRECTOR, ALASKAN DEPARTMENT
 ANCHORAGE, ALASKA
 SUBMITTED *[Signature]* APPROVED
 LAND APPRAISER COLONEL, CORPS. OF ENGINEERS
 RECOMMENDED ENGINEER, ALS. DEPT.
 DR. EA REAL ESTATE DIRECTOR

NO.	REVISION	BY	APPR.	DATE

ENGINEER DATA FROM CANOL PROJECT SURVEY
 NORTHWEST SERVICE COMMAND JANUARY 1964 CL-22
 FILE NO. N-51F-828
 DATE: NOVEMBER 18, 1944.



PROPERTY MAP
RICHARDSON HIGHWAY
 Big Delta To Fairbanks, ALASKA

IN 14 SHEETS SCALE: 1" = 1000' SHEET NO. 4

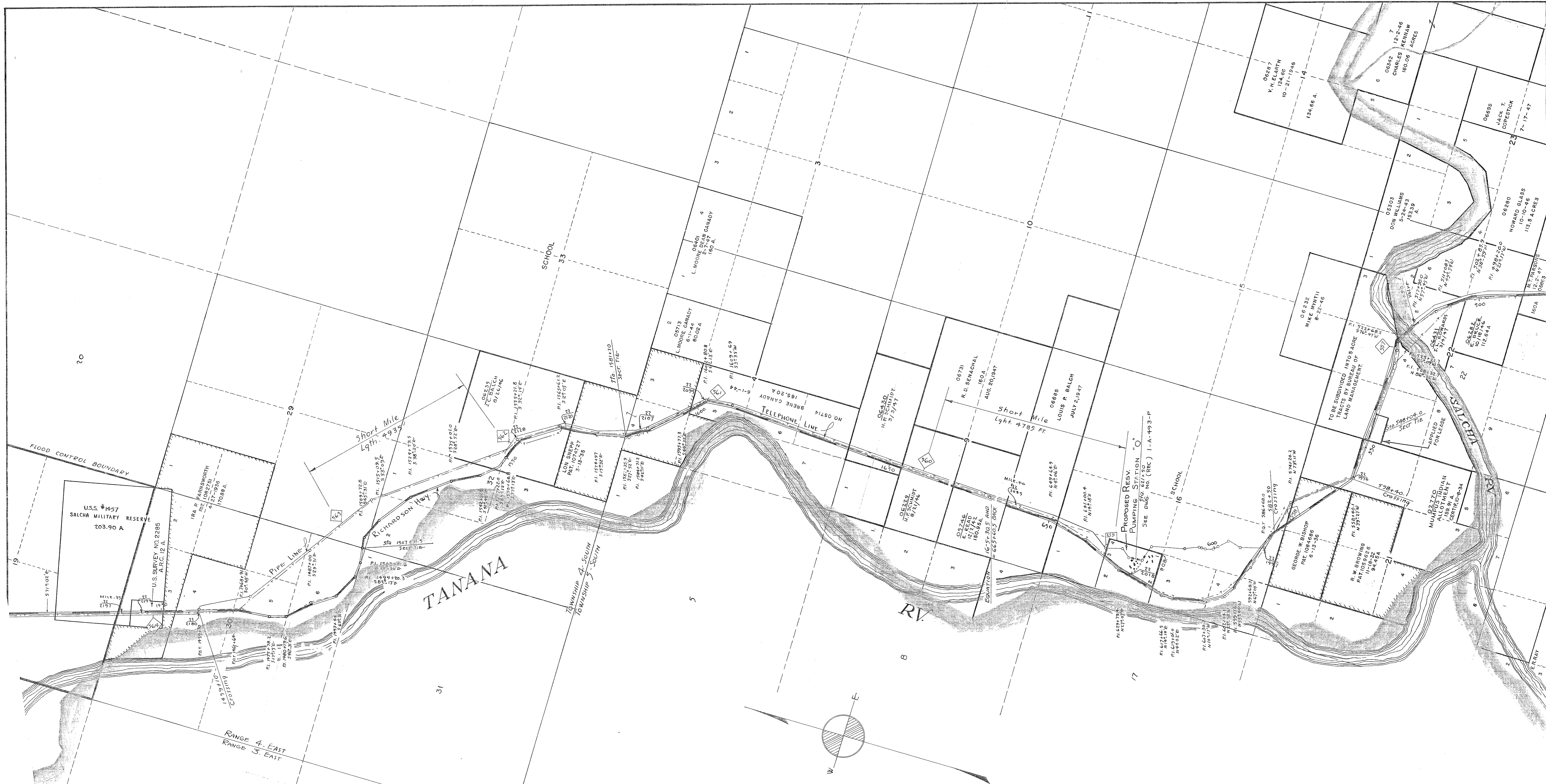
OFFICE OF REAL ESTATE DIRECTOR ALASKAN DEPARTMENT
 ANCHORAGE, ALASKA

SUBMITTED *C. S. Mark* APPROVED
 LAND APPRAISER COLONEL, CORPS. OF ENGINEERS
 ENGINEER, ALS. DEPT

RECOMMENDED
 REAL ESTATE DIRECTOR

DR. SA. FILE NO. N-51F-828 DATE: NOVEMBER 11, 1944

NO.	REVISION	BY	APPD	DATE
2	OWNERSHIP DATA & SHORELINE CORRECTED	S.A.		4-22-48
1	PROPERTY DWG. BROUGHT UP TO DATE	E.A.		6/2/47
ENGINEER DATA FROM CANOL PROJECT SURVEY NORTHWEST SERVICE COMMAND JANUARY 1944 CL-22				



PROPERTY MAP
RICHARDSON HIGHWAY
 Big Delta To Fairbanks, ALASKA

IN 14 SHEETS SCALE: 1" = 1000' SHEET NO. 5

OFFICE OF REAL ESTATE DIRECTOR ALASKAN DEPARTMENT
 ANCHORAGE, ALASKA

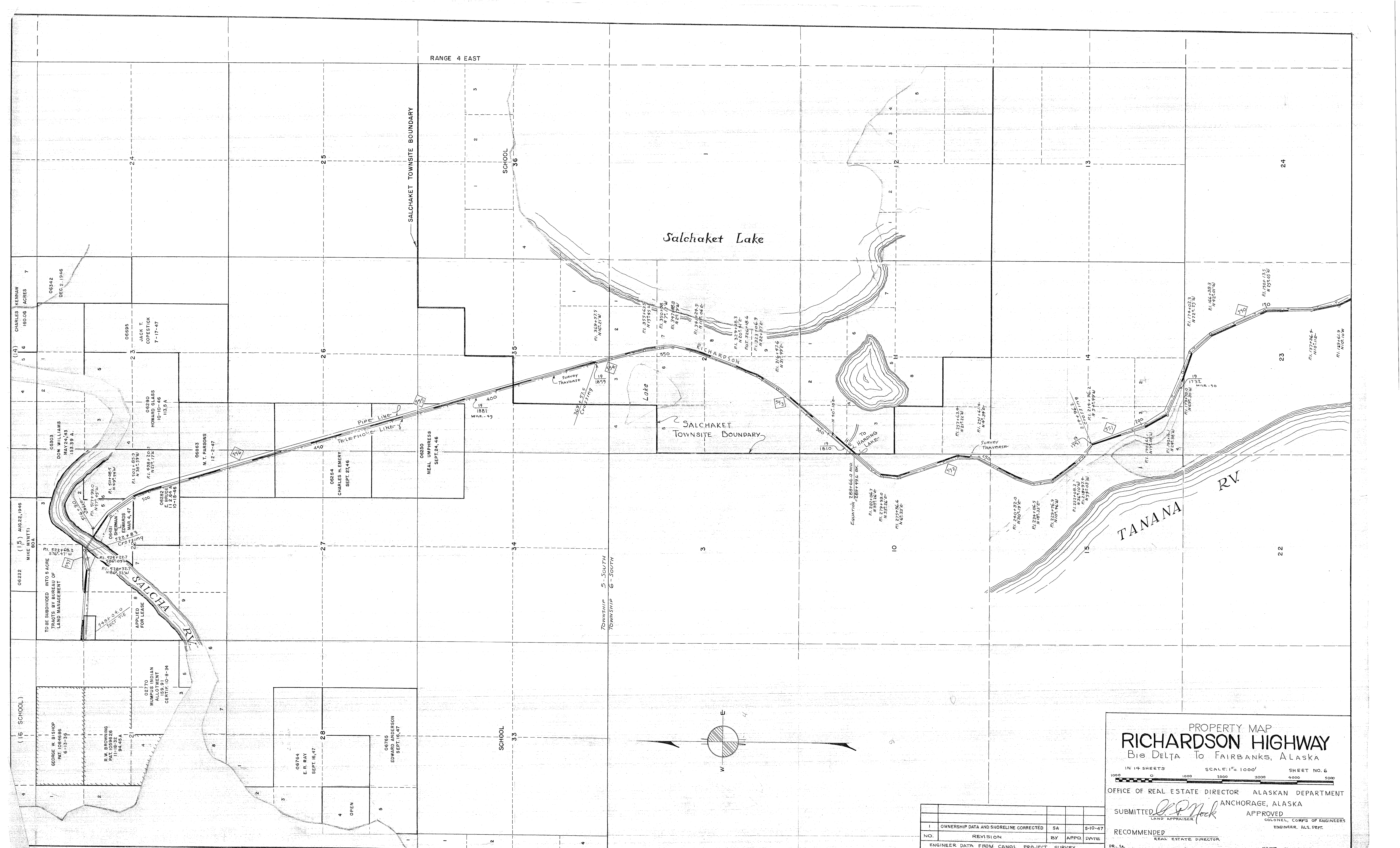
SUBMITTED *[Signature]* APPROVED
 LAND APPRAISER COLONEL, CORPS OF ENGINEERS
 ENGINEER, ALS DEPT.

RECOMMENDED
 REAL ESTATE DIRECTOR

DR. DA. FILE NO. N-51F-828 DATE: NOVEMBER 10, 1944

NO.	REVISION	BY	APPR	DATE
2	OWNERSHIP DATA & SHORELINE CORRECTED	SA		5/3/48
1	PROPERTY PWG. BROUGHT UP TO DATE.	EA		4/2/41
NO.	REVISION	BY	APPR	DATE

ENGINEER DATA FROM CANOL PROJECT SURVEY
 NORTHWEST SERVICE COMMAND JANUARY 1944 CL-22



PROPERTY MAP
RICHARDSON HIGHWAY
 Big Delta To Fairbanks, Alaska

IN 14 SHEETS SCALE: 1" = 1000' SHEET NO. 6
 0 1000 2000 3000 4000 5000

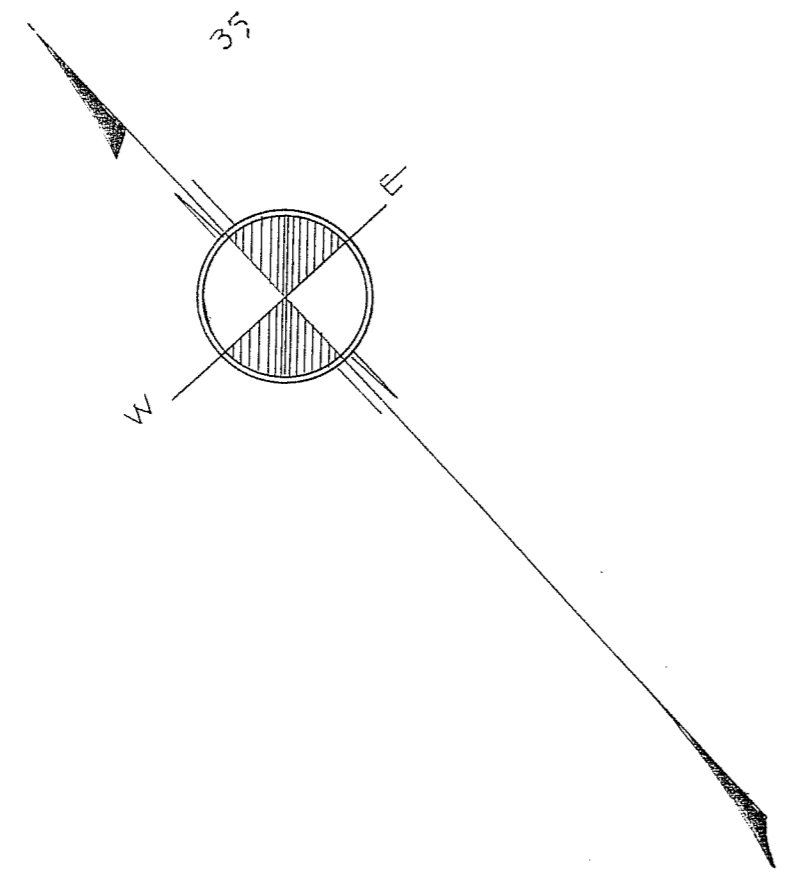
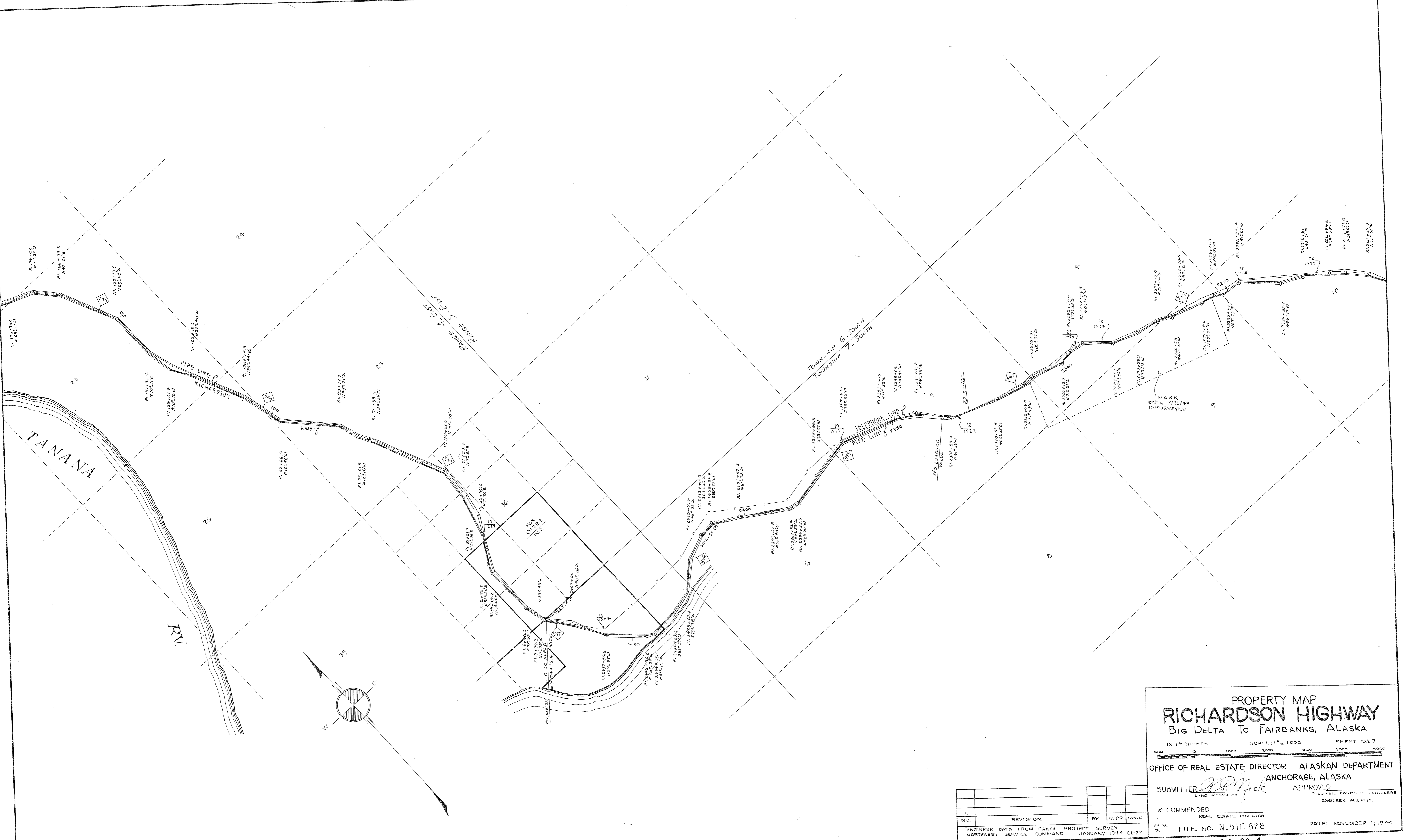
OFFICE OF REAL ESTATE DIRECTOR ALASKAN DEPARTMENT
 ANCHORAGE, ALASKA

SUBMITTED *L.P. Mack* APPROVED
 LAND APPRAISER COLONEL, CORPS OF ENGINEERS
 ENGINEER, ALS. DEPT.

RECOMMENDED
 REAL ESTATE DIRECTOR
 DR. SA. FILE NO. N-51F-828 DATE: NOVEMBER 7, 1944

NO.	REVISION	BY	APPD.	DATE
1	OWNERSHIP DATA AND SHORELINE CORRECTED	SA		5-10-47
ENGINEER DATA FROM CANOL PROJECT SURVEY NORTHWEST SERVICE COMMAND JANUARY 1944 CL-22				

N
 51F
 828



PROPERTY MAP
RICHARDSON HIGHWAY
 Big Delta To Fairbanks, Alaska

IN 14 SHEETS SCALE: 1" = 1000' SHEET NO. 7



OFFICE OF REAL ESTATE DIRECTOR ALASKAN DEPARTMENT
 ANCHORAGE, ALASKA

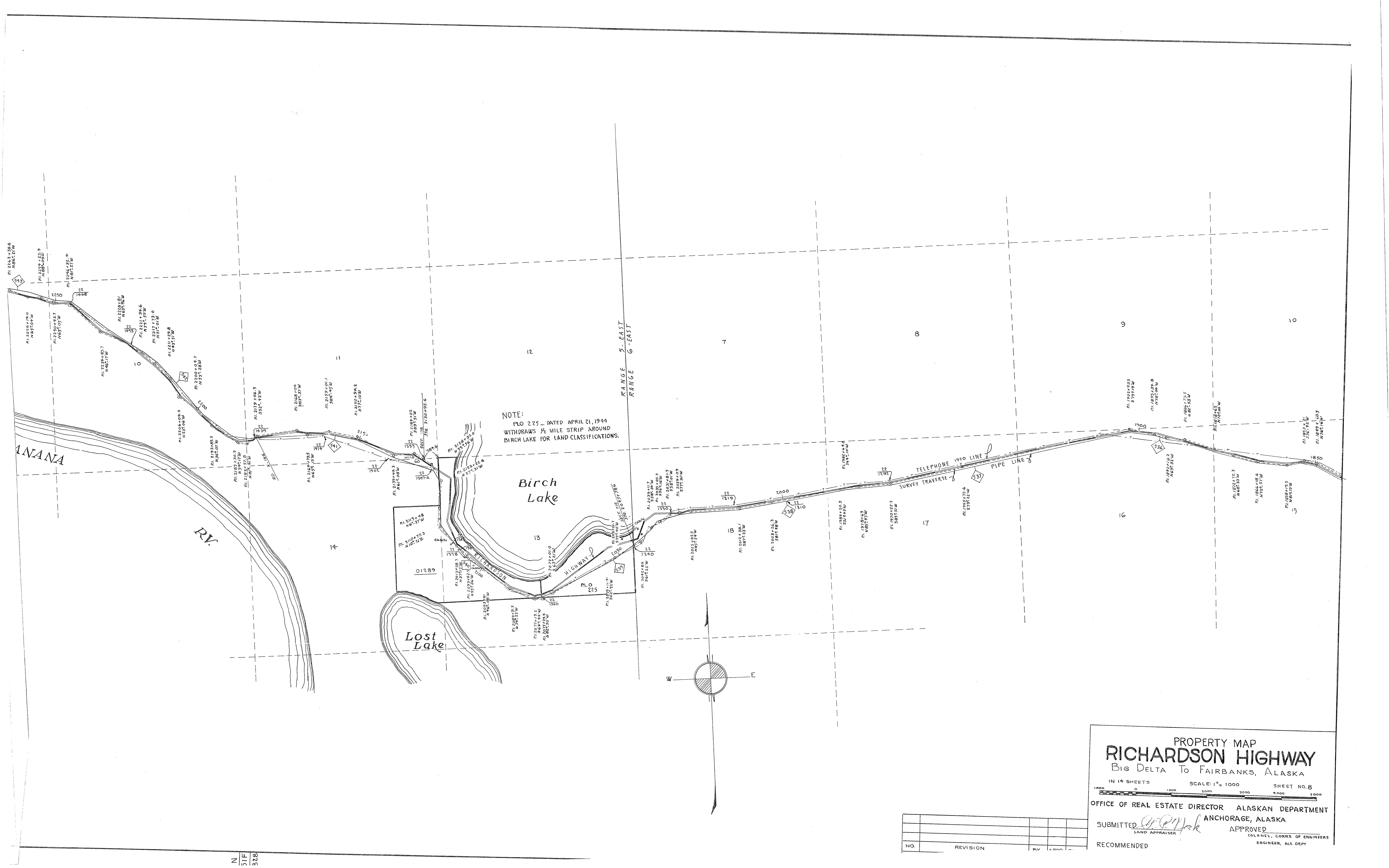
SUBMITTED *[Signature]* APPROVED
 LAND APPRAISER COLONEL, CORPS. OF ENGINEERS
 ENGINEER, ALS. DEPT.

RECOMMENDED
 REAL ESTATE DIRECTOR

NO.	REVISION	BY	APPD	DATE

ENGINEER DATA FROM CANOL PROJECT SURVEY
 NORTHWEST SERVICE COMMAND JANUARY 1944 CL-22

DR. SA. FILE NO. N.51F-828 DATE: NOVEMBER 4, 1944



NOTE:
 PLO 225 - DATED APRIL 21, 1944
 WITHDRAWS 1/2 MILE STRIP AROUND
 BIRCH LAKE FOR LAND CLASSIFICATIONS.

PROPERTY MAP
RICHARDSON HIGHWAY
 Big Delta To Fairbanks, Alaska

IN 14 SHEETS SCALE: 1" = 1000' SHEET NO. 8

OFFICE OF REAL ESTATE DIRECTOR ALASKAN DEPARTMENT
 ANCHORAGE, ALASKA

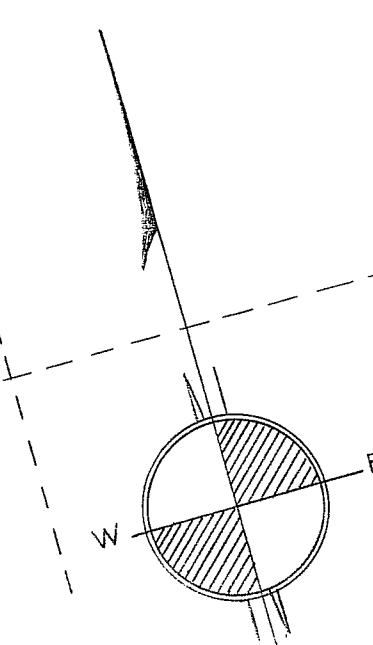
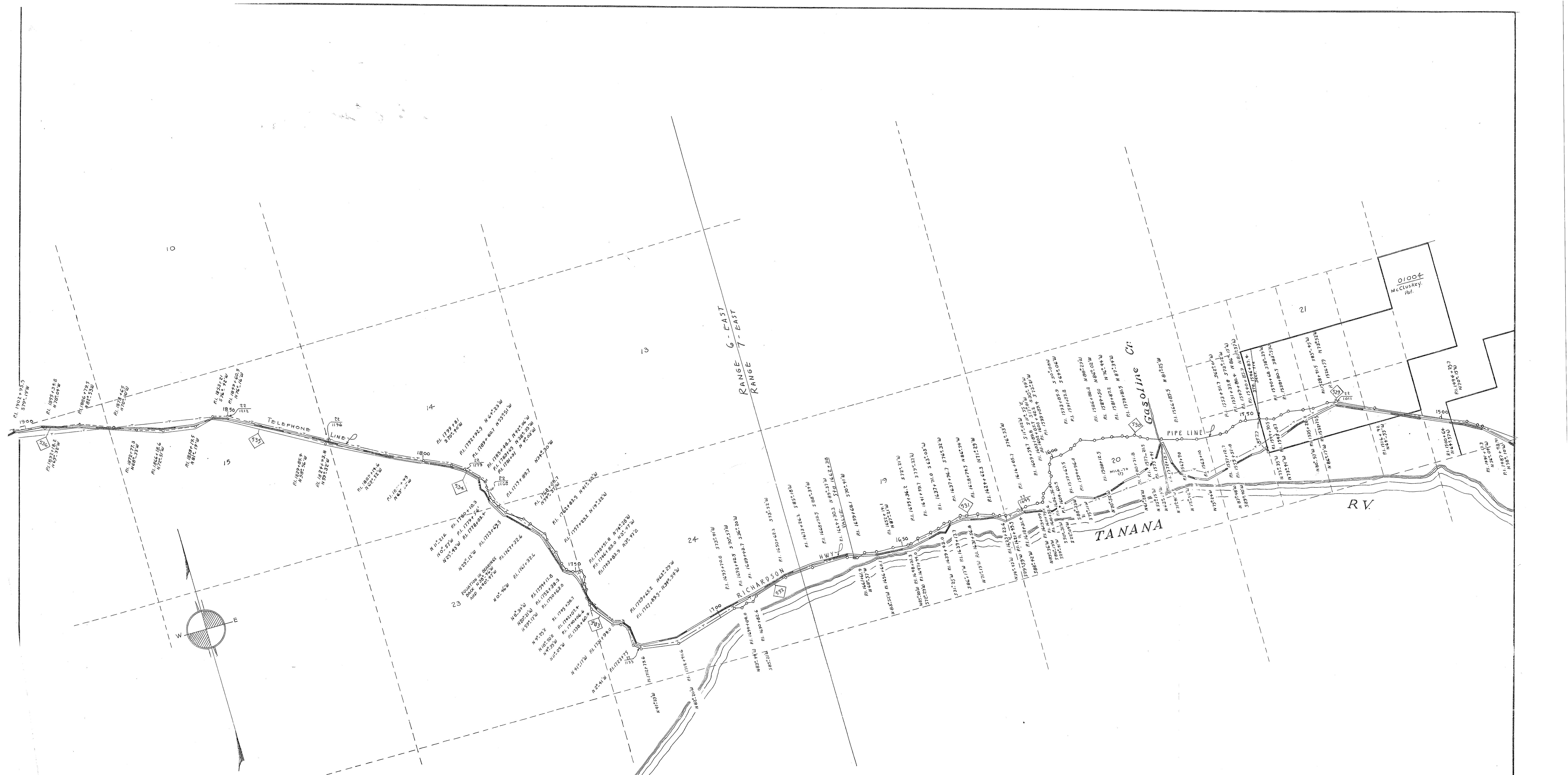
SUBMITTED *G.P. Mack*
 LAND APPRAISER

APPROVED
 COLONEL, CORRS. OF ENGINEERS
 ENGINEER, ALS. DEPT.

RECOMMENDED

NO.	REVISION	BY	DATE

N
 11 F
 328



PROPERTY MAP
RICHARDSON HIGHWAY
 Big Delta To Fairbanks, Alaska

IN 4 SHEETS SCALE: 1" = 1000' SHEET NO. 9

OFFICE OF REAL ESTATE DIRECTOR ALASKAN DEPARTMENT
 ANCHORAGE, ALASKA

SUBMITTED *Openlock* APPROVED
 LAND APPRAISER COLONEL, CORPS OF ENGINEERS
 ENGINEER, ALS. DEPT.

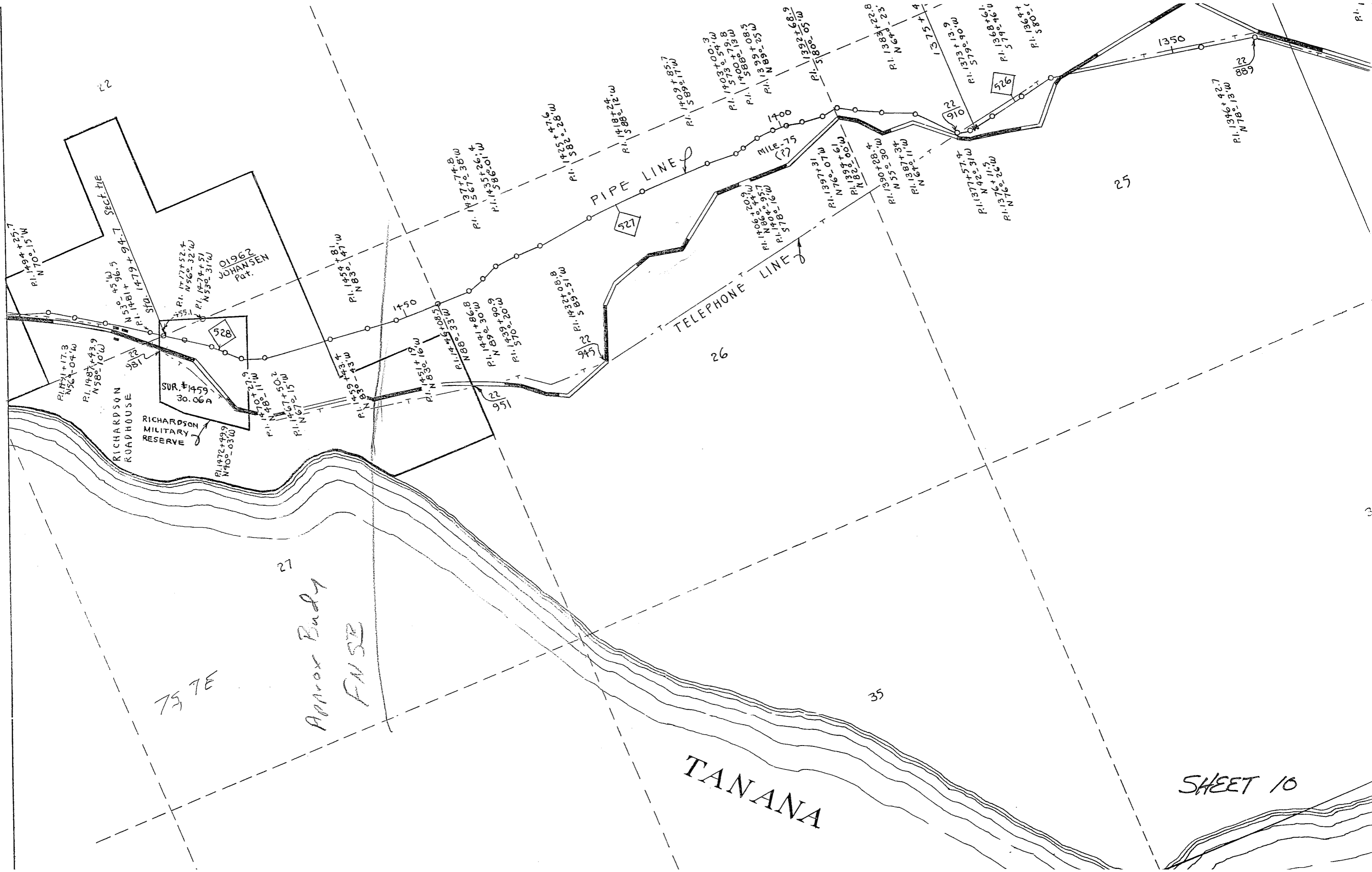
RECOMMENDED
 REAL ESTATE DIRECTOR

DR. G. FILE NO. N-51F-828 DATE: NOVEMBER 1, 1944
 CC. PATE: NOVEMBER 1, 1944

NO.	REVISION	BY	APPD.	DATE

ENGINEER DATA FROM CANOL PROJECT SURVEY,
 NORTHWEST SERVICE COMMAND JANUARY 1944 CL-22

N
51F
828



22

25

26

27

35

P.I. 1

3

SECT. TIE

PIPE LINE

TELEPHONE LINE

MILE .75

RICHARDSON ROADHOUSE

RICHARDSON MILITARY RESERVE

TANANA

Approx Budy FMSR

75 7E

SHEET 10

01962 JOHANSEN Pat.

SUR. #1459 30.06A

P.I. 1494+25.7 N 70° 15' W

P.I. 1471+17.3 N 56° 04' W

P.I. 1487+43.9 N 58° 10' W

P.I. 1479+94.7

P.I. 1477+52.4 N 56° 32' W

P.I. 1474+51 N 53° 31' W

P.I. 1472+49.9 N 70° 03' W

P.I. 1470+27.9 N 70° 11' W

P.I. 1478-11' W

P.I. 1467+50.2 N 67° 15' W

P.I. 1458-43' W

P.I. 1454+81' W N 83° 47' W

P.I. 1451+19' W N 83° 16' W

P.I. 1445+08.5 N 88° 33' W

P.I. 1441+86.8 N 89° 30' W

P.I. 1439+90.9 N 89° 20' W

P.I. 1435+26.4 N 58° 01' W

P.I. 1437+74.8 N 56° 38' W

P.I. 1425+47.6 N 58° 28' W

P.I. 1418+24' W N 58° 12' W

P.I. 1409+85.7 N 58° 17' W

P.I. 1403+00.3 N 57° 54' W

P.I. 1400+79.8 N 57° 13' W

P.I. 1399+08.5 N 58° 25' W

P.I. 1392+68.9 N 58° 05' W

P.I. 1397+31' W N 76° 07' W

P.I. 1394+61' W N 82° 00' W

P.I. 1390+28.4 N 55° 30' W

P.I. 1387+34' W N 64° 11' W

P.I. 1383+22.8 N 64° 23' W

P.I. 1373+13.9 N 57° 49' W

P.I. 1368+61' W N 57° 46' W

P.I. 1376+26' W N 76° 26' W

P.I. 1364+1' W N 58° 01' W

P.I. 1346+42.7 N 78° 13' W

528

527

529

522

522

526

522

529

1350