

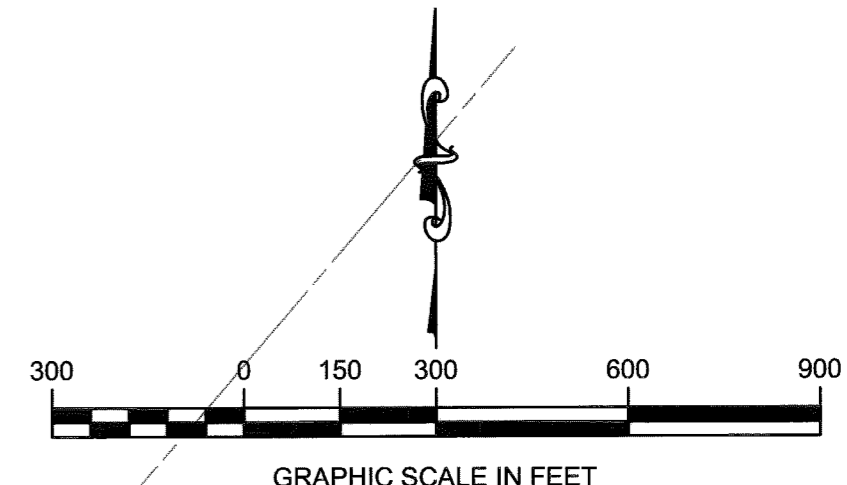
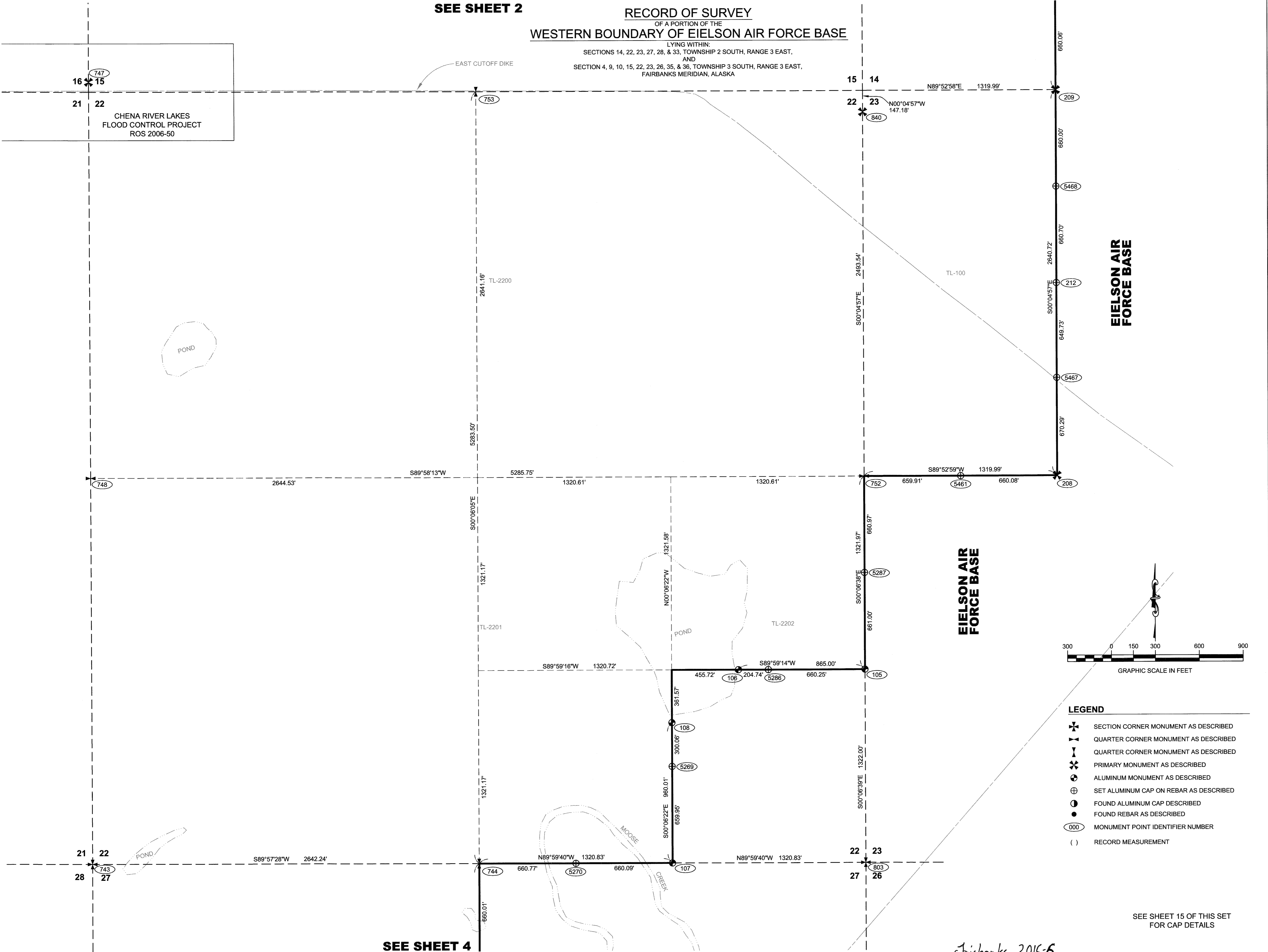
SEE SHEET 2

RECORD OF SURVEY
OF A PORTION OF THE
WESTERN BOUNDARY OF EIELSON AIR FORCE BASE

LYING WITHIN:
SECTIONS 14, 22, 23, 27, 28, & 33, TOWNSHIP 2 SOUTH, RANGE 3 EAST,
AND
SECTION 4, 9, 10, 15, 22, 23, 26, 35, & 36, TOWNSHIP 3 SOUTH, RANGE 3 EAST,
FAIRBANKS MERIDIAN, ALASKA

EAST CUTOFF DIKE

CHENA RIVER LAKES
FLOOD CONTROL PROJECT
ROS 2006-50



- LEGEND**
- ✱ SECTION CORNER MONUMENT AS DESCRIBED
 - ⊕ QUARTER CORNER MONUMENT AS DESCRIBED
 - ⊗ QUARTER CORNER MONUMENT AS DESCRIBED
 - ⊗ PRIMARY MONUMENT AS DESCRIBED
 - ⊕ ALUMINUM MONUMENT AS DESCRIBED
 - ⊕ SET ALUMINUM CAP ON REBAR AS DESCRIBED
 - ⊕ FOUND ALUMINUM CAP DESCRIBED
 - FOUND REBAR AS DESCRIBED
 - MONUMENT POINT IDENTIFIER NUMBER
 - () RECORD MEASUREMENT

SEE SHEET 15 OF THIS SET
FOR CAP DETAILS

Fairbanks 2015-6



CONTRACT NO. W911KB-11-D-0003
 CONTRACTOR DOWL HKM
 CITY ANCHORAGE STATE ALASKA
 RECOMMENDED BY: _____ DATE: _____
 APPROVED BY: _____ DATE: _____
 PRIME CONTRACTOR: _____ CHIEF SURVEY SECTION: _____

Revision	Date	Description	By	App'd

U.S. ARMY CORPS OF ENGINEERS
 DISTRICT OFFICE
 1000 BOYD AVENUE
 JBER, ALASKA 99506-0998

DATE: 6 FEB 2015
 JOB NO.: 0913
 CONTRACT NO.: W911KB-11-D-0003
 UIC: 0102288
 UIC: 0102288

APPROVED BY: _____ DATE: 6 FEB 2015
 CHECKED BY: _____ DATE: 6 FEB 2015
 DRAWN BY: MWD
 SURVEYED BY: DOWL HKM

SCALE: 1" = 300'
 SIZE: 24" x 34"
 FILE NAME: 092288R101

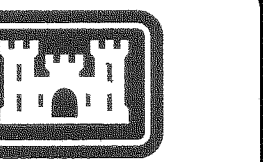
FAIRBANKS RECORDING DISTRICT, ALASKA
EIELSON WESTERN BOUNDARY
EIELSON AIR FORCE BASE
RECORD OF SURVEY

Reference number:
15-04-715
Sheet 3 of 17

SEE SHEET 3

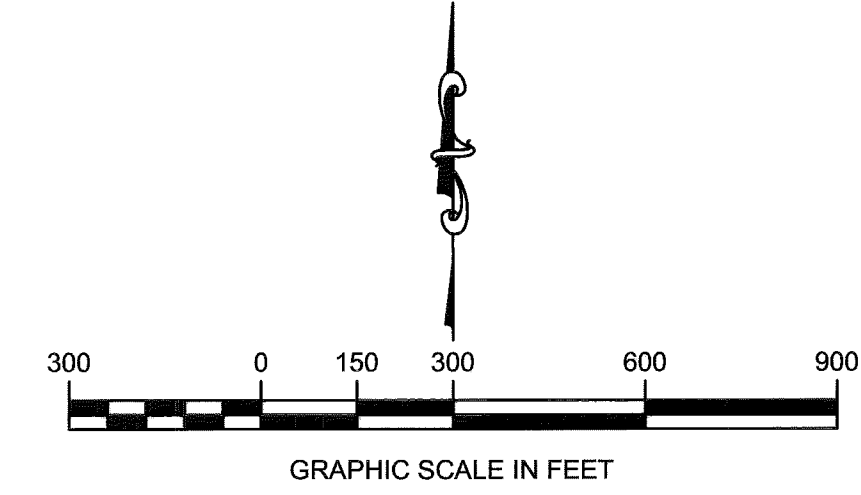
RECORD OF SURVEY OF A PORTION OF THE WESTERN BOUNDARY OF EIELSON AIR FORCE BASE

LYING WITHIN:
SECTIONS 14, 22, 23, 27, 28, & 33, TOWNSHIP 2 SOUTH, RANGE 3 EAST,
AND
SECTION 4, 9, 10, 15, 22, 23, 26, 35, & 36, TOWNSHIP 3 SOUTH, RANGE 3 EAST,
FAIRBANKS MERIDIAN, ALASKA



ALASKA DISTRICT
CORPS OF ENGINEERS
ANCHORAGE, ALASKA

CONTRACT NO.	W911KB-11-D-0003
CONTRACTOR	DOWL HKM
CITY	ANCHORAGE
STATE	ALASKA
DATE	
APPROVED	
PRIME CONTRACTOR	
CHIEF SURVEY SECTION	



LEGEND

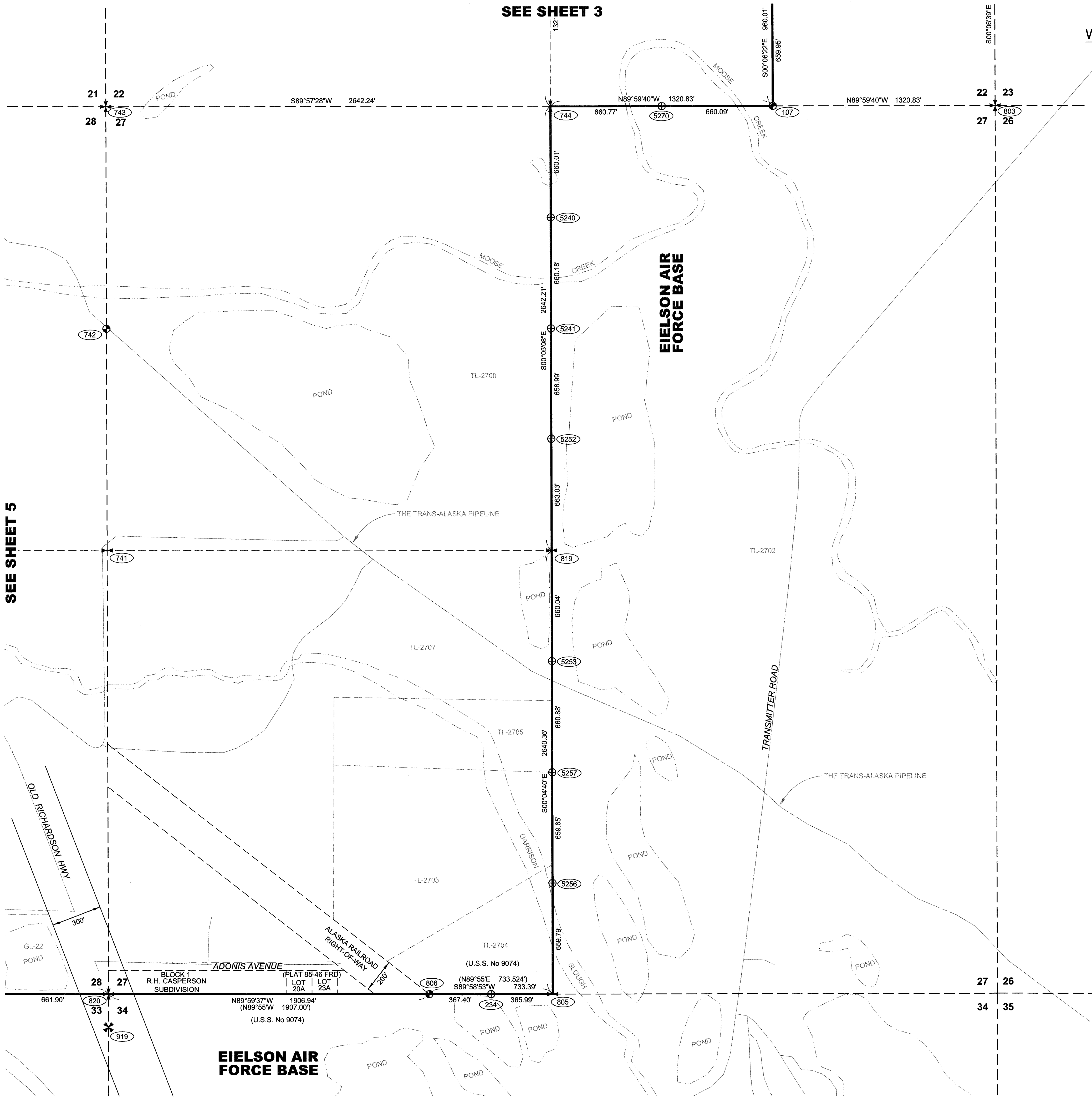
- SECTION CORNER MONUMENT AS DESCRIBED
- QUARTER CORNER MONUMENT AS DESCRIBED
- QUARTER CORNER MONUMENT AS DESCRIBED
- PRIMARY MONUMENT AS DESCRIBED
- ALUMINUM MONUMENT AS DESCRIBED
- SET ALUMINUM CAP ON REBAR AS DESCRIBED
- FOUND ALUMINUM CAP DESCRIBED
- FOUND REBAR AS DESCRIBED
- MONUMENT POINT IDENTIFIER NUMBER
- RECORD MEASUREMENT

Revision	Date	Description	By	App'd

SURVEYED BY:	DOWL HKM
DRAWN BY:	MWD
CHECKED BY:	SEP
APPROVED BY:	
DATE:	6 FEB 2015
JOB NO.:	0813
CONTRACT NO.:	W911KB-11-D-0003
FILE NAME:	062208
PLAT DATE:	6 FEB 2013
SCALE:	1" = 300'
SIZE:	24" x 34"

FAIRBANKS RECORDING DISTRICT, ALASKA
EIELSON WESTERN BOUNDARY
EIELSON AIR FORCE BASE
RECORD OF SURVEY

Reference number:
15-04-715
Sheet 4 of 17



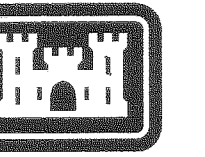
SEE SHEET 15 OF THIS SET
FOR CAP DETAILS

Fairbanks 2015-6

RECORD OF SURVEY

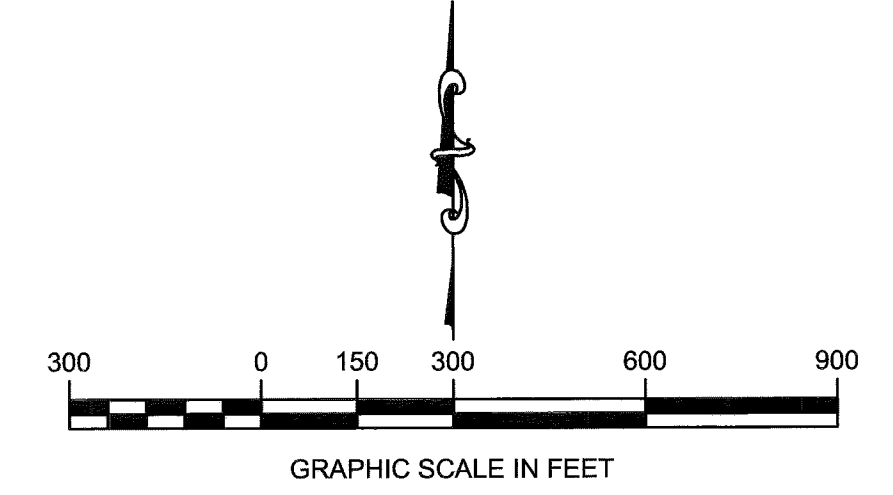
OF A PORTION OF THE WESTERN BOUNDARY OF EIELSON AIR FORCE BASE

LYING WITHIN:
 SECTIONS 14, 22, 23, 27, 28, & 33, TOWNSHIP 2 SOUTH, RANGE 3 EAST,
 AND
 SECTION 4, 9, 10, 15, 22, 23, 26, 35, & 36, TOWNSHIP 3 SOUTH, RANGE 3 EAST,
 FAIRBANKS MERIDIAN, ALASKA



ALASKA DISTRICT
 CORPS OF ENGINEERS
 ANCHORAGE, ALASKA

CONTRACT NO. W911KB-11-D-0003
 CONTRACTOR DOWL HKM
 CITY ANCHORAGE STATE ALASKA
 Recommended By: _____ Date: _____
 Approved: _____ Date: _____
 PRIME CONTRACTOR: _____ CHIEF SURVEY SECTION: _____



LEGEND

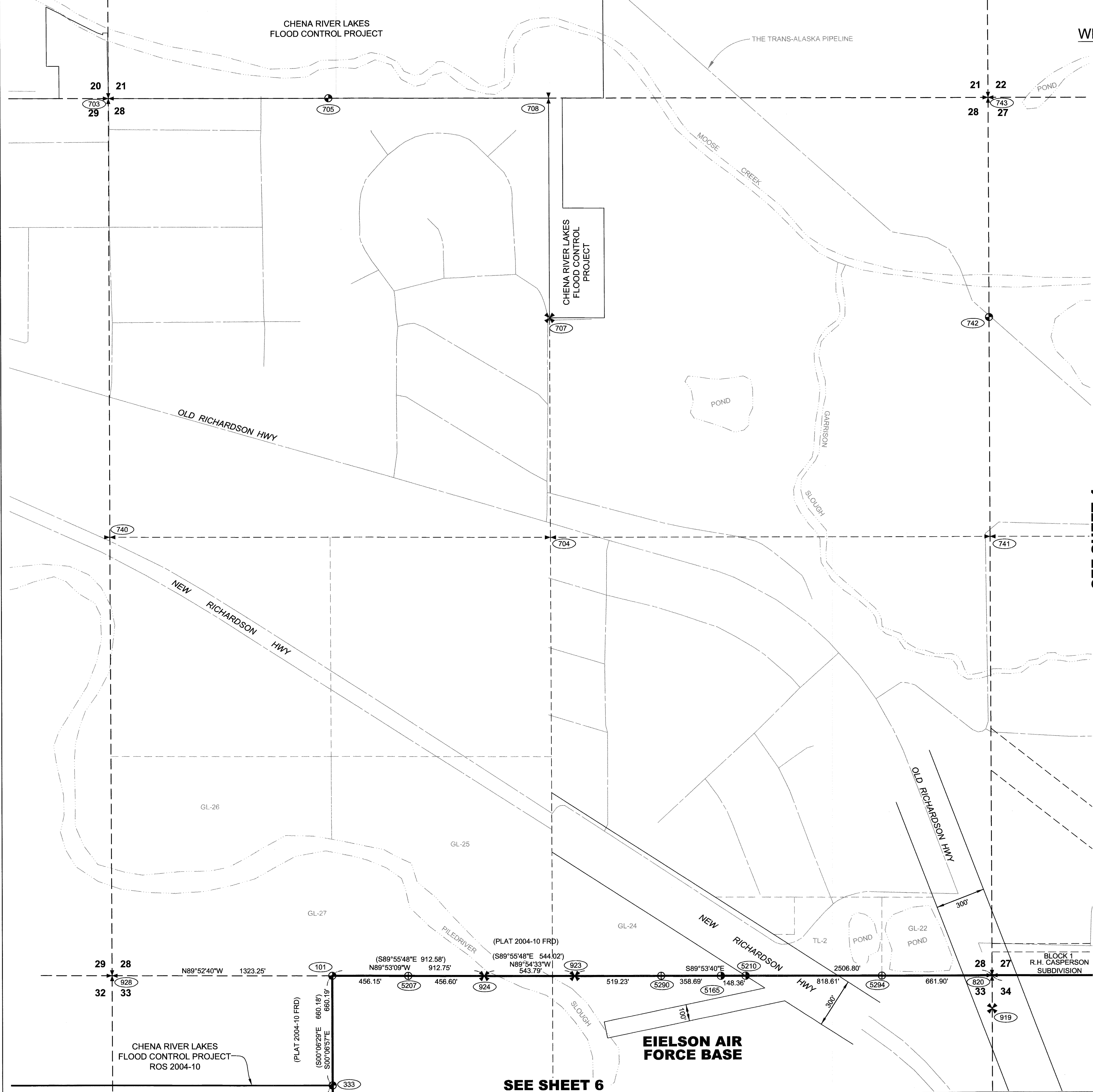
- ✱ SECTION CORNER MONUMENT AS DESCRIBED
- ⊕ QUARTER CORNER MONUMENT AS DESCRIBED
- ⊕ QUARTER CORNER MONUMENT AS DESCRIBED
- ✱ PRIMARY MONUMENT AS DESCRIBED
- ⊕ ALUMINUM MONUMENT AS DESCRIBED
- ⊕ SET ALUMINUM CAP ON REBAR AS DESCRIBED
- ⊕ FOUND ALUMINUM CAP DESCRIBED
- FOUND REBAR AS DESCRIBED
- ⊕ MONUMENT POINT IDENTIFIER NUMBER
- () RECORD MEASUREMENT

Revision	Date	Description

U.S. ARMY CORPS OF ENGINEERS ALASKA DISTRICT FAIRBANKS, ALASKA 99706-0888	SURVEYED BY: DOWL HKM	CHECKED BY: MWD	DATE: 6 FEB 2015
DOWL HKM 4041 1 st STREET, ANCHORAGE, ALASKA 99503 PHONE: 907.263.2222	APPROVED BY:	SCALE:	FILE NAME:
	JAS	1/8"	09C299V01
CONTRACT NO. W911KB-11-D-0003	DATE:	JOB NO.:	FILE NO.:
W911KB-11-D-0003	6 FEB 2015	0913	09C299V01

FAIRBANKS RECORDING DISTRICT, ALASKA
 EIELSON WESTERN BOUNDARY
 EIELSON AIR FORCE BASE
 RECORD OF SURVEY

Reference number:
 15-04-715
 Sheet 5 of 17

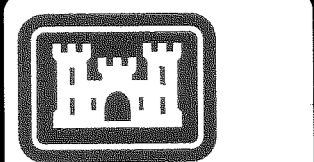


SEE SHEET 4

SEE SHEET 15 OF THIS SET FOR CAP DETAILS

SEE SHEET 6

Fairbanks 2015-6



ALASKA DISTRICT
CORPS OF ENGINEERS
ANCHORAGE, ALASKA

CONTRACT NO. W911KB-11-D-0003
CONTRACTOR DOWLHAKM
CITY ANCHORAGE STATE ALASKA
Date: _____
Approved: _____
Chief Survey Section
Revised: _____
By: _____

Revision	Date	Description

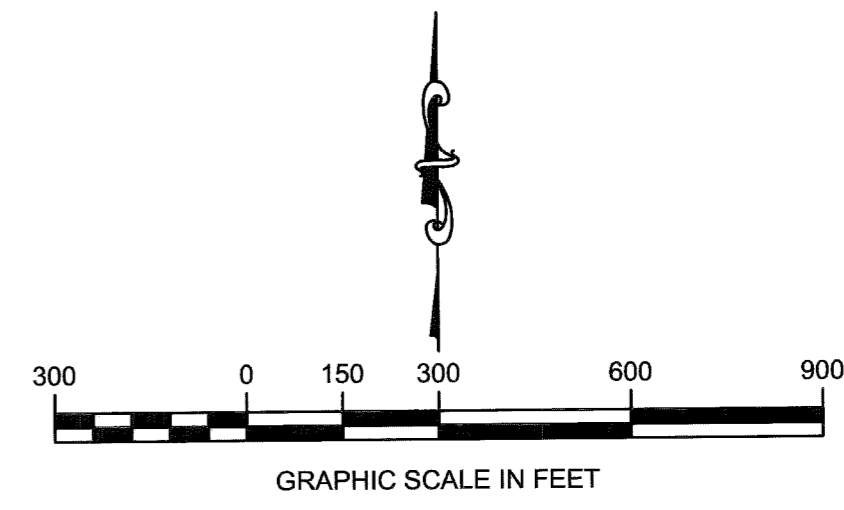
DATE: 6 FEB 2015
JOB NO.:
DRAWN BY: JSE
CHECKED BY: JSE
SURVEYED BY: DOWLHAKM
DRAWN BY: JSE
CHECKED BY: JSE
DATE: 6 FEB 2015
SCALE: 1" = 300'
PLOT DATE: 6 FEB 2015
U.P.C.: 082296
FILE NAME: 082296V01

FAIRBANKS RECORDING DISTRICT, ALASKA
EIELSON WESTERN BOUNDARY
EIELSON AIR FORCE BASE
RECORD OF SURVEY

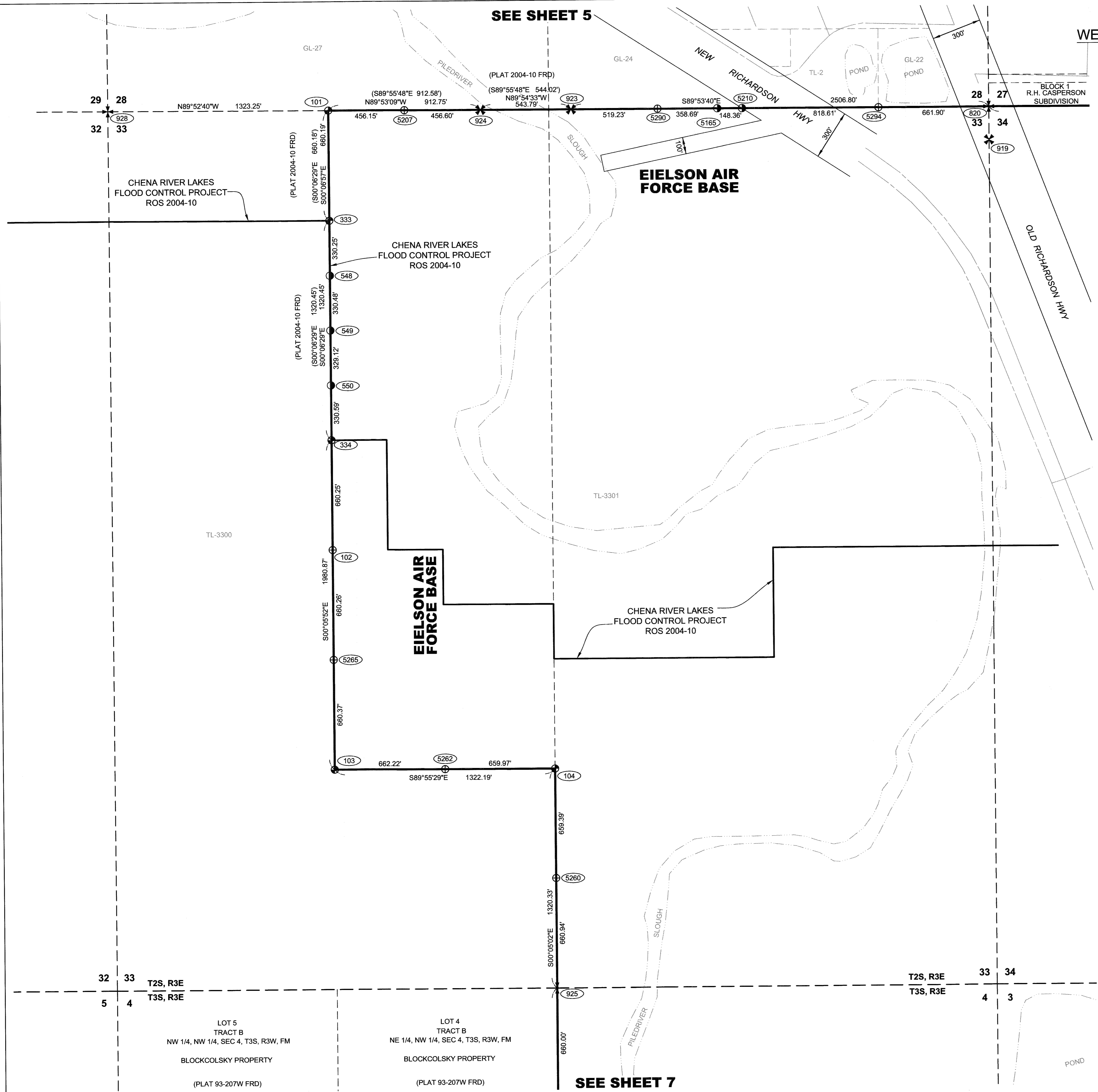
Reference number:
15-04-715
Sheet 6 of 17

RECORD OF SURVEY OF A PORTION OF THE WESTERN BOUNDARY OF EIELSON AIR FORCE BASE

LYING WITHIN:
SECTIONS 14, 22, 23, 27, 28, & 33, TOWNSHIP 2 SOUTH, RANGE 3 EAST,
AND
SECTION 4, 9, 10, 15, 22, 23, 26, 35, & 36, TOWNSHIP 3 SOUTH, RANGE 3
EAST,
FAIRBANKS MERIDIAN, ALASKA



- ### LEGEND
- ✦ SECTION CORNER MONUMENT AS DESCRIBED
 - ⊕ QUARTER CORNER MONUMENT AS DESCRIBED
 - ⊕ QUARTER CORNER MONUMENT AS DESCRIBED
 - ✦ PRIMARY MONUMENT AS DESCRIBED
 - ⊕ ALUMINUM MONUMENT AS DESCRIBED
 - ⊕ SET ALUMINUM CAP ON REBAR AS DESCRIBED
 - ⊕ FOUND ALUMINUM CAP DESCRIBED
 - FOUND REBAR AS DESCRIBED
 - ⓪ MONUMENT POINT IDENTIFIER NUMBER
 - () RECORD MEASUREMENT



SEE SHEET 16 OF THIS SET
FOR CAP DETAILS

Fairbanks 2015-6

SEE SHEET 5

SEE SHEET 7

LOT 5
TRACT B
NW 1/4, NW 1/4, SEC 4, T3S, R3W, FM
BLOCKCOLSKY PROPERTY
(PLAT 93-207W FRD)

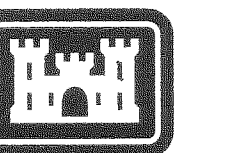
LOT 4
TRACT B
NE 1/4, NW 1/4, SEC 4, T3S, R3W, FM
BLOCKCOLSKY PROPERTY
(PLAT 93-207W FRD)

SEE SHEET 6

RECORD OF SURVEY

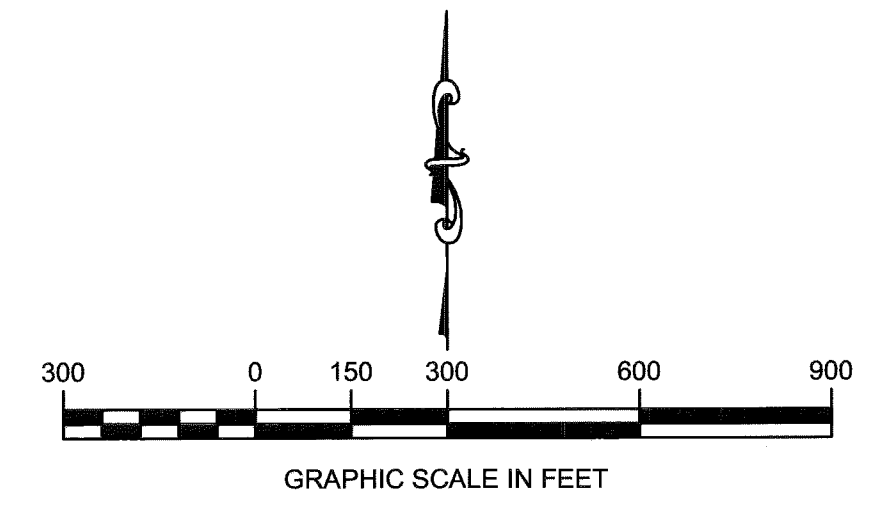
OF A PORTION OF THE WESTERN BOUNDARY OF EIELSON AIR FORCE BASE

LYING WITHIN: SECTIONS 14, 22, 23, 27, 28, & 33, TOWNSHIP 2 SOUTH, RANGE 3 EAST, AND SECTION 4, 9, 10, 15, 22, 23, 26, 35, & 36, TOWNSHIP 3 SOUTH, RANGE 3 EAST, FAIRBANKS MERIDIAN, ALASKA

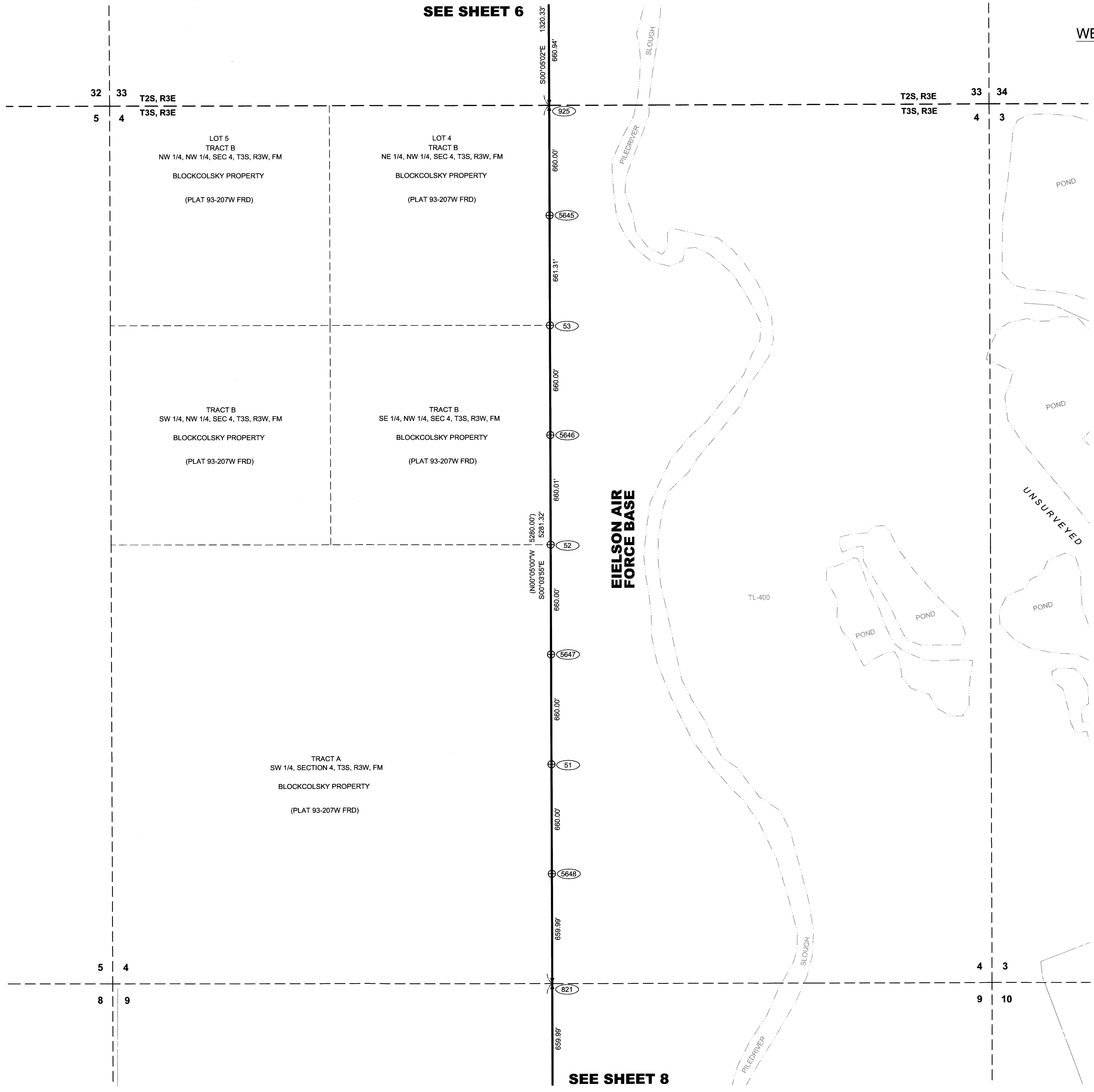


ALASKA DISTRICT CORPS OF ENGINEERS ANCHORAGE, ALASKA

Contract information: CONTRACT NO. W911KB-11-D-0003, CONTRACTOR DOWL HKM, CITY ANCHORAGE, STATE ALASKA



- LEGEND: SECTION CORNER MONUMENT AS DESCRIBED, QUARTER CORNER MONUMENT AS DESCRIBED, PRIMARY MONUMENT AS DESCRIBED, ALUMINUM MONUMENT AS DESCRIBED, SET ALUMINUM CAP ON REBAR AS DESCRIBED, FOUND ALUMINUM CAP DESCRIBED, FOUND REBAR AS DESCRIBED, MONUMENT POINT IDENTIFIER NUMBER, RECORD MEASUREMENT



SEE SHEET 8

SEE SHEET 16 OF THIS SET FOR CAP DETAILS

Fairbanks 2015 6

Table with columns: Revision, Date, Description, By, Apprd

Approval and project details: SURVEYED BY, CHECKED BY, DRAWN BY, APPROVED BY, DATE, JOB NO., CONTRACT NO., FILE NAME

FAIRBANKS RECORDING DISTRICT, ALASKA EIELSON WESTERN BOUNDARY EIELSON AIR FORCE BASE RECORD OF SURVEY

Reference number: 15-04-715, Sheet 7 of 17

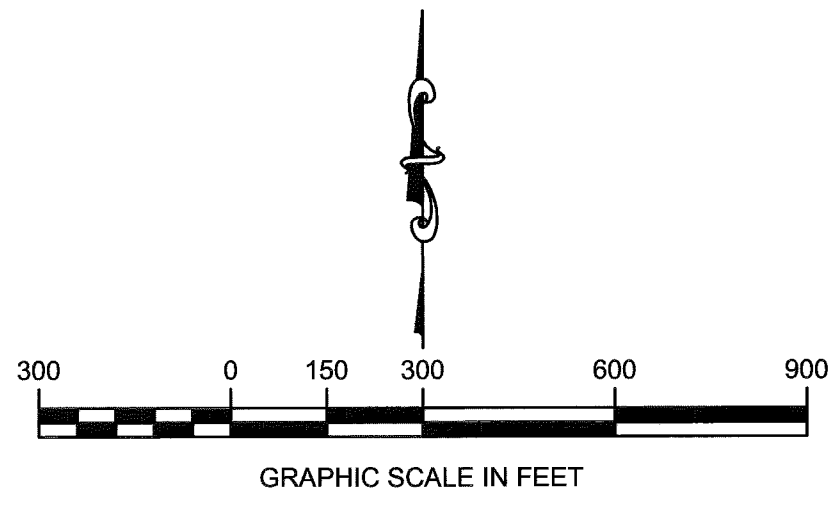
RECORD OF SURVEY
OF A PORTION OF THE
WESTERN BOUNDARY OF EIELSON AIR FORCE BASE

LYING WITHIN:
SECTIONS 14, 22, 23, 27, 28, & 33, TOWNSHIP 2 SOUTH, RANGE 3 EAST,
AND
SECTION 4, 9, 10, 15, 22, 23, 26, 35, & 36, TOWNSHIP 3 SOUTH, RANGE 3
EAST,
FAIRBANKS MERIDIAN, ALASKA



ALASKA DISTRICT
CORPS OF ENGINEERS
ANCHORAGE, ALASKA

CONTRACT NO. W911KB-11-D-0003
CONTRACTOR DOWL HKM
CITY ANCHORAGE STATE ALASKA
Date: _____
Approved: _____
PRIME CONTRACTOR _____ CHIEF SURVEY SECTION _____



- LEGEND**
- ✱ SECTION CORNER MONUMENT AS DESCRIBED
 - ⊕ QUARTER CORNER MONUMENT AS DESCRIBED
 - ⊕ QUARTER CORNER MONUMENT AS DESCRIBED
 - ✱ PRIMARY MONUMENT AS DESCRIBED
 - ⊕ ALUMINUM MONUMENT AS DESCRIBED
 - ⊕ SET ALUMINUM CAP ON REBAR AS DESCRIBED
 - ⊕ FOUND ALUMINUM CAP DESCRIBED
 - FOUND REBAR AS DESCRIBED
 - ⊕ MONUMENT POINT IDENTIFIER NUMBER
 - () RECORD MEASUREMENT

Revision	Date	Description	By	App'd

U.S. ARMY CORPS OF ENGINEERS
ALASKA DISTRICT
FAIRBANKS, ALASKA 99706-0888

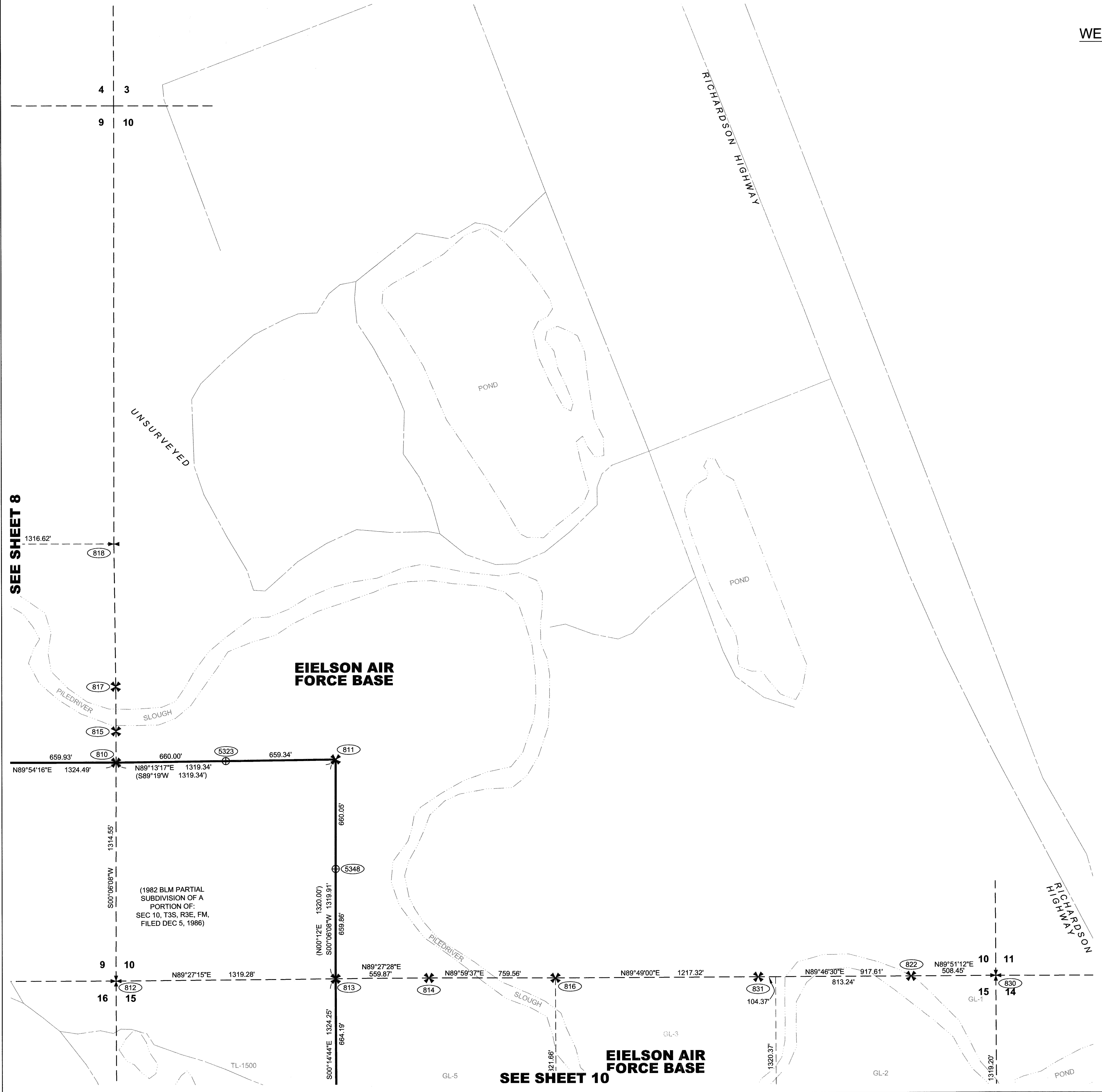
DATE: 6 FEB 2015
JOB NO.: 0813
CHECKED BY: SEP
DRAWN BY: MWD
APPROVED BY: JAS
SCALE: 1"=500'
SIZE: 24" x 34"

CONTRACT NO.: W911KB-11-D-0003
UPC: 100208
FILE DATE: FEB 2015
FILE NAME: 082209001

DOWL HKM
4041 15TH STREET, ANCHORAGE, ALASKA 99503
PHONE: 907.562.2222

FAIRBANKS RECORDING DISTRICT, ALASKA
EIELSON WESTERN BOUNDARY
EIELSON AIR FORCE BASE
RECORD OF SURVEY

Reference number:
15-04-715
Sheet 9 of 17



SEE SHEET 8

SEE SHEET 10

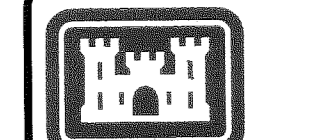
SEE SHEET 16 OF THIS SET
FOR CAP DETAILS

Fairbanks 2015

SEE SHEET 9

RECORD OF SURVEY
OF A PORTION OF THE
WESTERN BOUNDARY OF EIELSON AIR FORCE BASE

LYING WITHIN:
SECTIONS 14, 22, 23, 27, 28, & 33, TOWNSHIP 2 SOUTH, RANGE 3 EAST,
AND
SECTION 4, 9, 10, 15, 22, 23, 28, 35, & 36, TOWNSHIP 3 SOUTH, RANGE 3
EAST,
FAIRBANKS MERIDIAN, ALASKA



ALASKA DISTRICT
CORPS OF ENGINEERS
ANCHORAGE, ALASKA

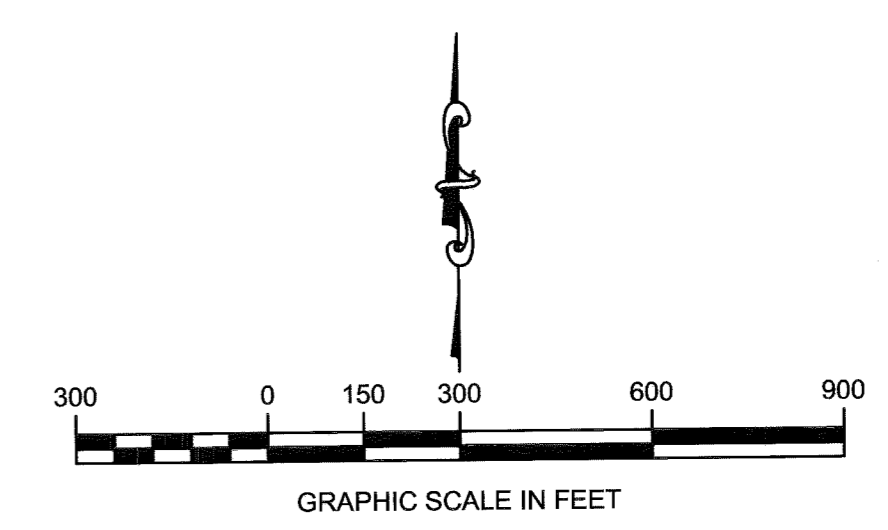
CONTRACT NO. W911KB-11-D-0003
CONTRACTOR DOWLHKM
CITY ANCHORAGE STATE ALASKA
APPROVED: [Signature] DATE: [Blank]
PRIME CONTRACTOR: [Blank] CHIEF SURVEY SECTION: [Blank]

Revision	Date	Description

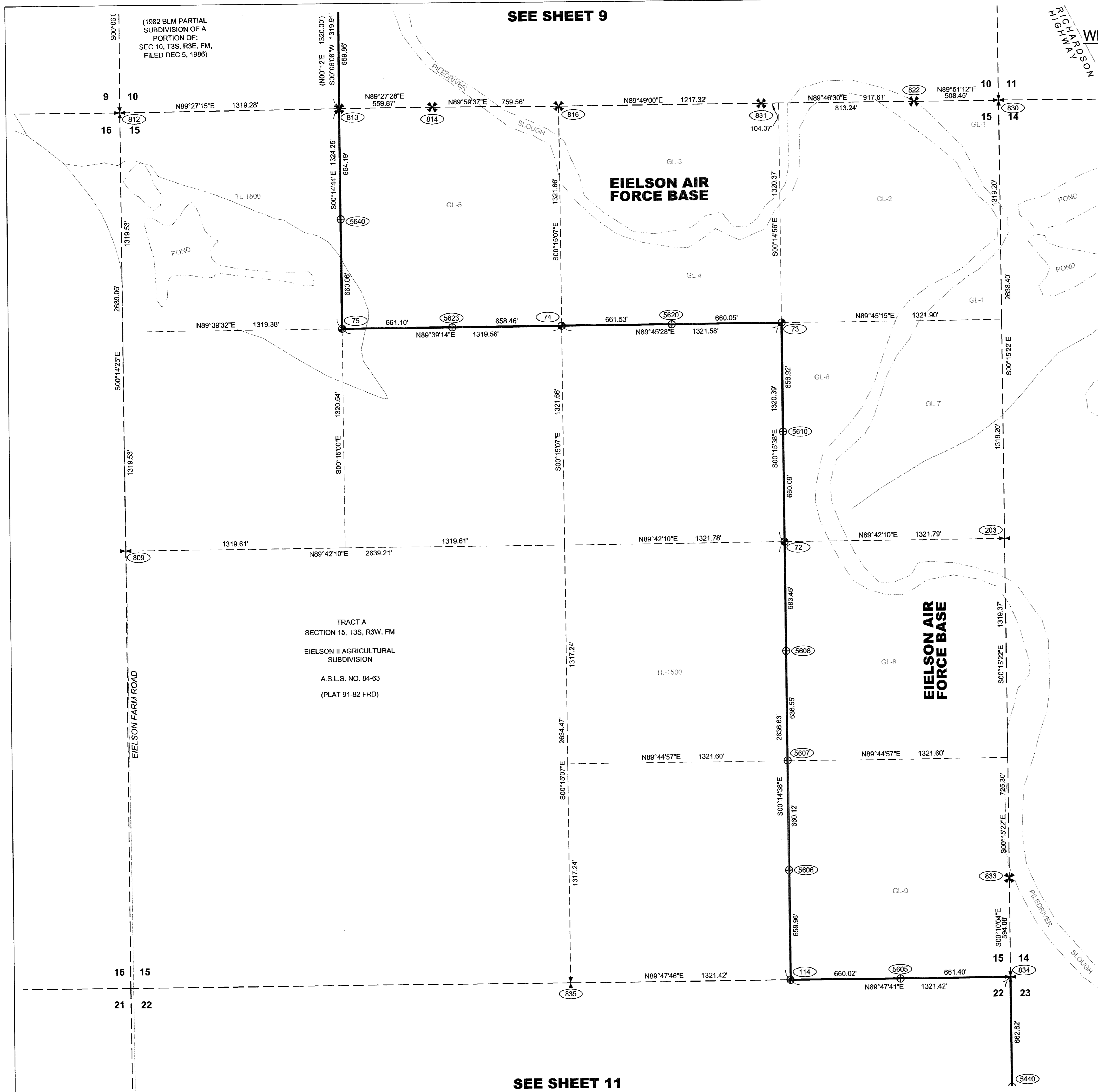
DATE: 6 FEB 2015
JOB NO.: [Blank]
DRAWN BY: [Blank]
CHECKED BY: [Blank]
APPROVED BY: [Blank]
PLOT DATE: 6 FEB 2015
SCALE: 1" = 300'
SIZE: 24" x 34"
FILE NAME: [Blank]
U.S. ARMY CORPS OF ENGINEERS
ALASKA DISTRICT
P.O. BOX 6898
JBER, ALASKA 99506-0898
DOWLHKM
4644 1/2 STREET - ANCHORAGE, ALASKA 99503
PHONE (907) 562-3321 FAX (907) 562-5903

FAIRBANKS RECORDING DISTRICT, ALASKA
EIELSON WESTERN BOUNDARY
EIELSON AIR FORCE BASE
RECORD OF SURVEY

Reference number:
15-04-715
Sheet 10 of 17



- LEGEND**
- ✦ SECTION CORNER MONUMENT AS DESCRIBED
 - ✦ QUARTER CORNER MONUMENT AS DESCRIBED
 - ✦ QUARTER CORNER MONUMENT AS DESCRIBED
 - ✦ PRIMARY MONUMENT AS DESCRIBED
 - ⊕ ALUMINUM MONUMENT AS DESCRIBED
 - ⊕ SET ALUMINUM CAP ON REBAR AS DESCRIBED
 - FOUND ALUMINUM CAP DESCRIBED
 - FOUND REBAR AS DESCRIBED
 - MONUMENT POINT IDENTIFIER NUMBER
 - () RECORD MEASUREMENT



SEE SHEET 16 OF THIS SET
FOR CAP DETAILS

SEE SHEET 11

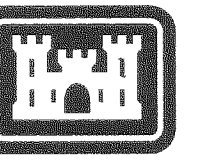
Fairbanks 2015-6

SEE SHEET 10

RECORD OF SURVEY

OF A PORTION OF THE WESTERN BOUNDARY OF EIELSON AIR FORCE BASE

LYING WITHIN: SECTIONS 14, 22, 23, 27, 28, & 33, TOWNSHIP 2 SOUTH, RANGE 3 EAST, AND SECTION 4, 9, 10, 15, 22, 23, 26, 35, & 36, TOWNSHIP 3 SOUTH, RANGE 3 EAST, FAIRBANKS MERIDIAN, ALASKA



ALASKA DISTRICT CORPS OF ENGINEERS ANCHORAGE, ALASKA

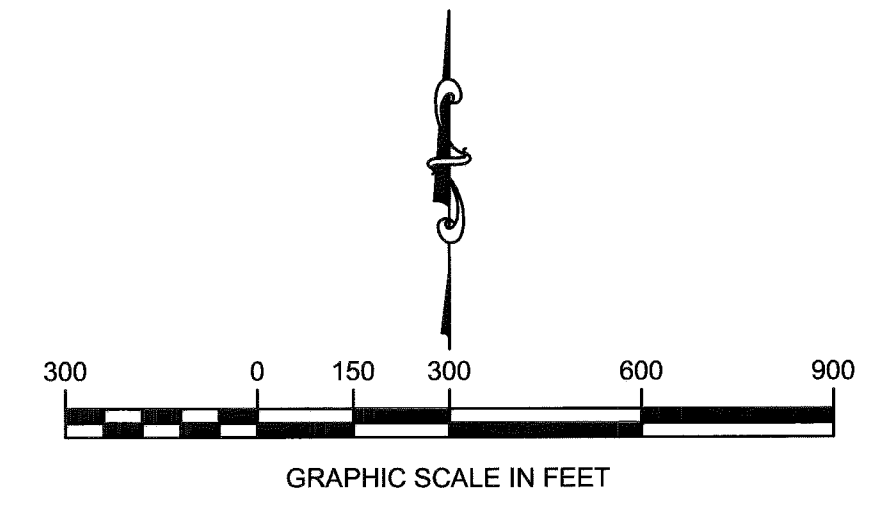
Contract information table including Contract No. W911KB-11-D-0003, Contractor DOWLHKM, City Anchorage, State Alaska, and Prime Contractor information.

Table with columns for Revision, Date, Description, and By. It contains several rows for revisions.

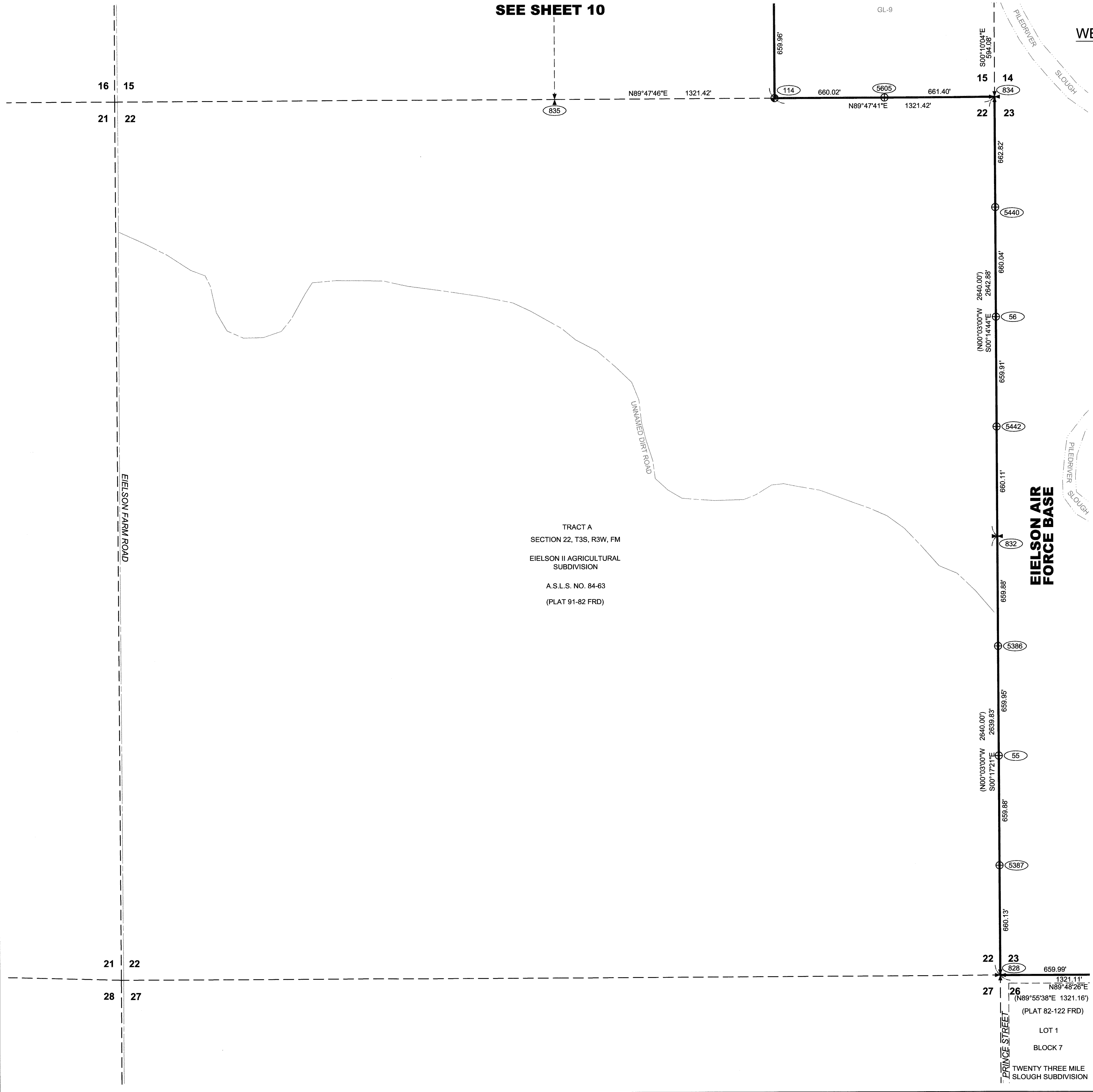
Approval and date information table including Surveyed by, Checked by, Drawn by, Approved by, Date, Job No., Contract No., Plot Date, Scale, Size, File Name, and U.S. Army Corps of Engineers logo.

FAIRBANKS RECORDING DISTRICT, ALASKA EIELSON WESTERN BOUNDARY EIELSON AIR FORCE BASE RECORD OF SURVEY

Reference number: 15-04-715 Sheet 11 of 17



- LEGEND: SECTION CORNER MONUMENT AS DESCRIBED, QUARTER CORNER MONUMENT AS DESCRIBED, PRIMARY MONUMENT AS DESCRIBED, ALUMINUM MONUMENT AS DESCRIBED, SET ALUMINUM CAP ON REBAR AS DESCRIBED, FOUND ALUMINUM CAP DESCRIBED, FOUND REBAR AS DESCRIBED, MONUMENT POINT IDENTIFIER NUMBER, RECORD MEASUREMENT



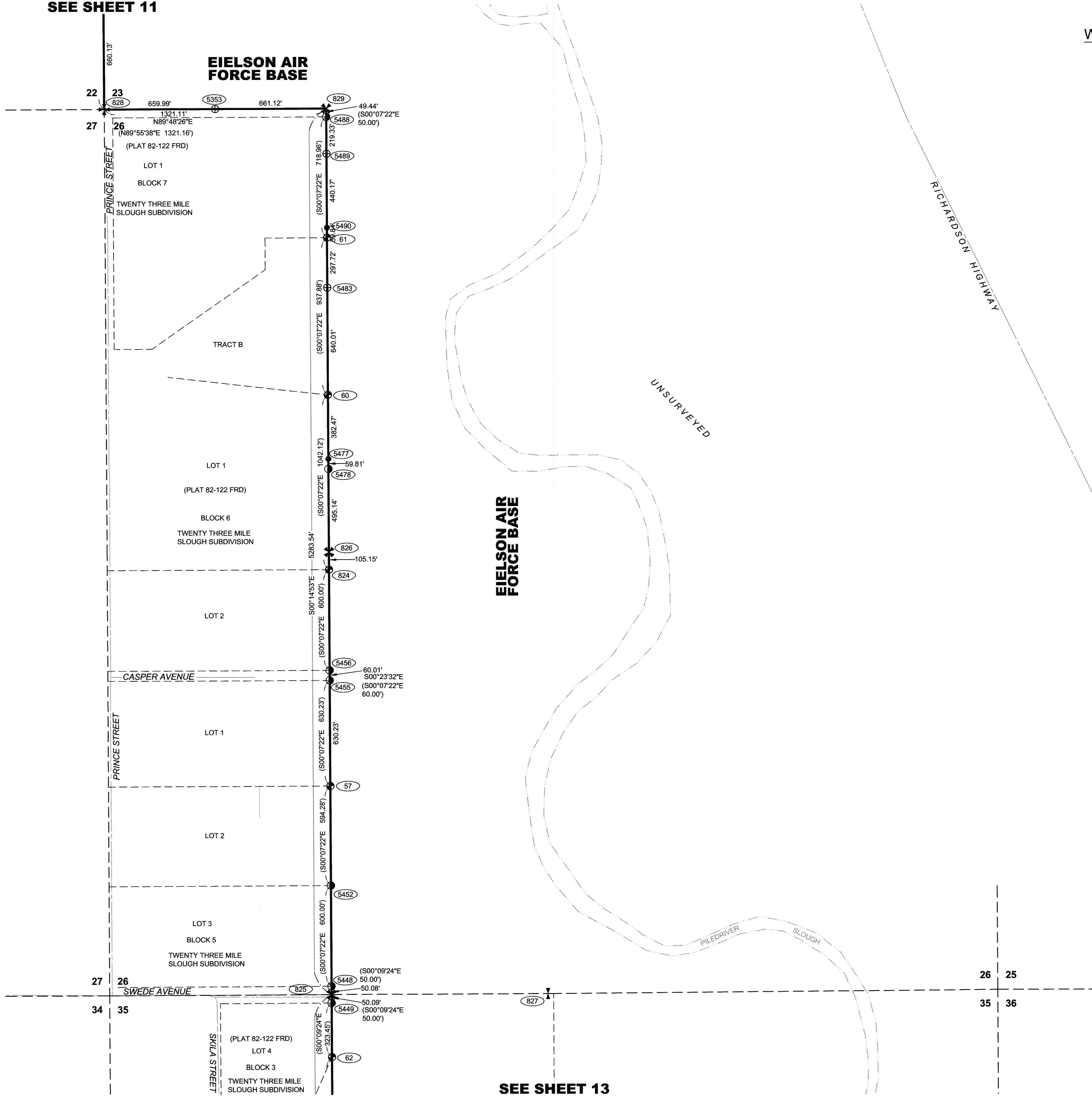
SEE SHEET 17 OF THIS SET FOR CAP DETAILS

SEE SHEET 12

Fairbanks 2015-6

SEE SHEET 11

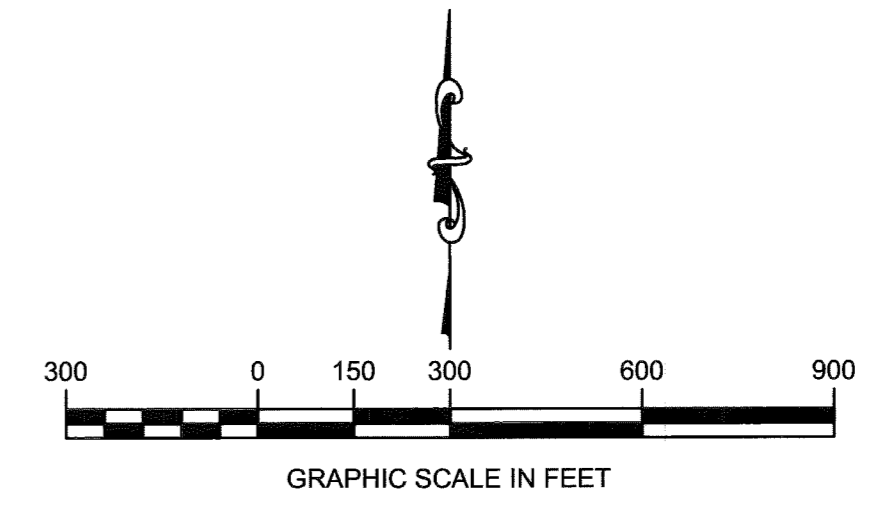
EIELSON AIR FORCE BASE



SEE SHEET 13

RECORD OF SURVEY OF A PORTION OF THE WESTERN BOUNDARY OF EIELSON AIR FORCE BASE

LYING WITHIN:
 SECTIONS 14, 22, 23, 27, 28, & 33, TOWNSHIP 2 SOUTH, RANGE 3 EAST,
 AND
 SECTION 4, 9, 10, 15, 22, 23, 26, 35, & 36, TOWNSHIP 3 SOUTH, RANGE 3
 EAST
 FAIRBANKS MERIDIAN, ALASKA



- LEGEND**
- ✦ SECTION CORNER MONUMENT AS DESCRIBED
 - ⊥ QUARTER CORNER MONUMENT AS DESCRIBED
 - ⊥ QUARTER CORNER MONUMENT AS DESCRIBED
 - ✦ PRIMARY MONUMENT AS DESCRIBED
 - ⊙ ALUMINUM MONUMENT AS DESCRIBED
 - ⊕ SET ALUMINUM CAP ON REBAR AS DESCRIBED
 - ⊙ FOUND ALUMINUM CAP DESCRIBED
 - ⊙ FOUND REBAR AS DESCRIBED
 - ⊙ MONUMENT POINT IDENTIFIER NUMBER
 - () RECORD MEASUREMENT



CONTRACT NO. W911KB-11-D-0003
 CONTRACTOR DOWL HKM
 CITY ANCHORAGE STATE ALASKA
 Approved: _____ Date: _____
 PRIME CONTRACTOR CHIEF SURVEY SECTION

Revision	Date	Description	By	App'd

U.S. ARMY CORPS OF ENGINEERS
 ALASKA DISTRICT
 JBER, ALASKA 99506-0888

DATE: 6 FEB 2015
 JOB NO.: 0813
 CHECKED BY: SEP
 DRAWN BY: MWD
 SURVEYED BY: DOWL HKM
 APPROVED BY: _____
 SCALE: 1" = 300'
 SIZE: 24" x 34"

CONTRACT NO.: W911KB-11-D-0003
 UIC: 040208
 FILE NAME: 09228901

DOWL HKM
 4041 15th STREET, ANCHORAGE, ALASKA 99503
 (907) 562-2222

FAIRBANKS RECORDING DISTRICT, ALASKA
 EIELSON WESTERN BOUNDARY
 EIELSON AIR FORCE BASE
 RECORD OF SURVEY

Reference number:
 15-04-715
 Sheet 12 of 17

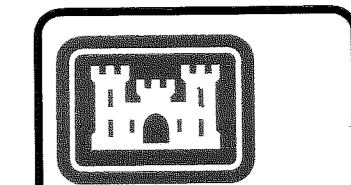
SEE SHEET 17 OF THIS SET FOR CAP DETAILS

Fairbanks 2015-6

SEE SHEET 12

RECORD OF SURVEY
OF A PORTION OF THE
WESTERN BOUNDARY OF EIELSON AIR FORCE BASE

LYING WITHIN:
SECTIONS 14, 22, 23, 27, 28, & 33, TOWNSHIP 2 SOUTH, RANGE 3 EAST,
AND
SECTION 4, 9, 10, 15, 22, 23, 26, 35, & 36, TOWNSHIP 3 SOUTH, RANGE 3 EAST,
FAIRBANKS MERIDIAN, ALASKA



ALASKA DISTRICT
CORPS OF ENGINEERS
ANCHORAGE, ALASKA

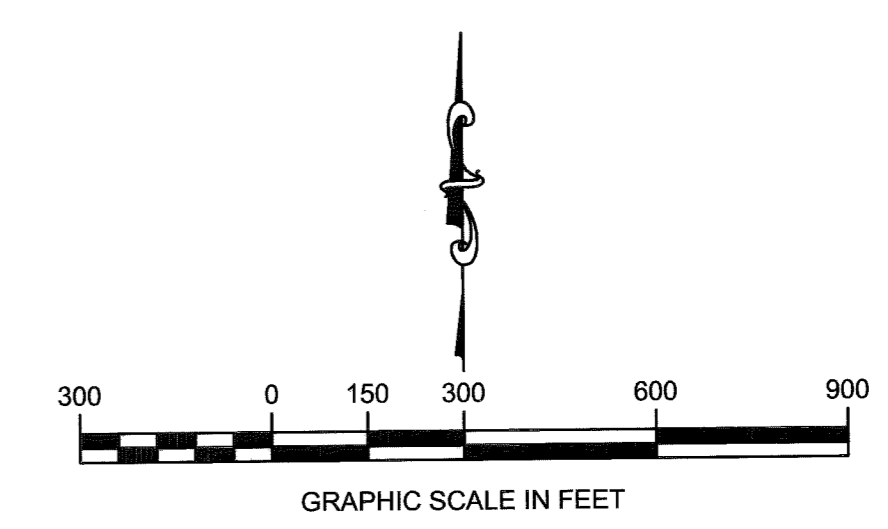
CONTRACT NO.	W911KB-11-D-0003
CONTRACTOR	DOWLHKM
CITY	ANCHORAGE, STATE ALASKA
APPROVED:	DATE:
PRIME CONTRACTOR:	CHIEF SURVEY SECTION:

Revision	Date	Description

DATE:	6 FEB 2015
JOB NO.:	
CITY:	ANCHORAGE
CONTRACT NO.:	W911KB-11-D-0003
UPC:	062298
PLAT DATE:	6 FEB 2015
FILE NAME:	062298/01
SIZE:	24" x 34"

FAIRBANKS RECORDING DISTRICT, ALASKA
EIELSON WESTERN BOUNDARY
EIELSON AIR FORCE BASE
RECORD OF SURVEY

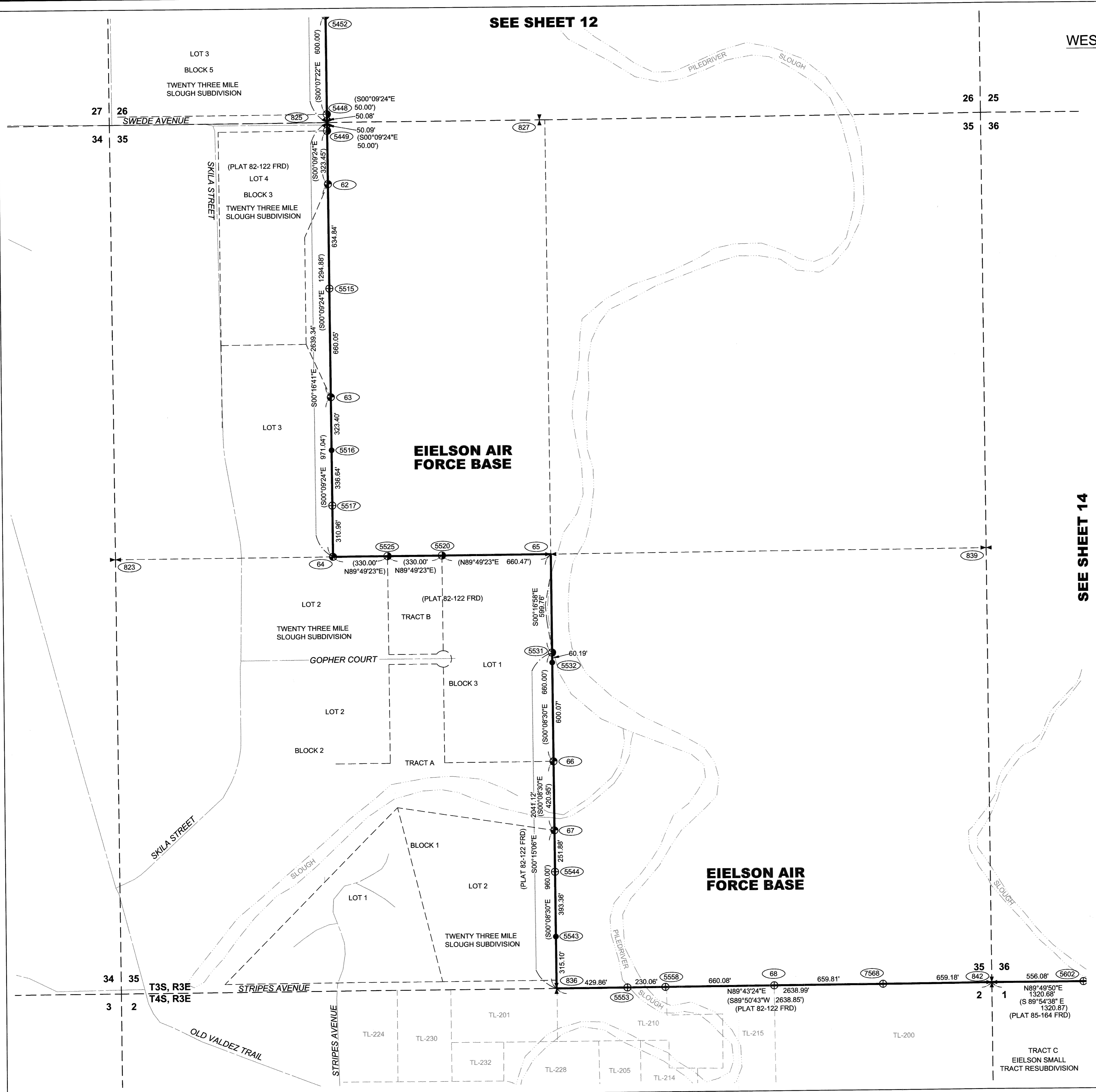
Reference number:	15-04-715
Sheet 13 of 17	



- LEGEND**
- ⊕ SECTION CORNER MONUMENT AS DESCRIBED
 - ⊕ QUARTER CORNER MONUMENT AS DESCRIBED
 - ⊕ QUARTER CORNER MONUMENT AS DESCRIBED
 - ⊕ PRIMARY MONUMENT AS DESCRIBED
 - ⊕ ALUMINUM MONUMENT AS DESCRIBED
 - ⊕ SET ALUMINUM CAP ON REBAR AS DESCRIBED
 - ⊕ FOUND ALUMINUM CAP DESCRIBED
 - ⊕ FOUND REBAR AS DESCRIBED
 - ⊕ MONUMENT POINT IDENTIFIER NUMBER
 - () RECORD MEASUREMENT

SEE SHEET 14

SEE SHEET 17 OF THIS SET
FOR CAP DETAILS



Fairbanks 2015-6

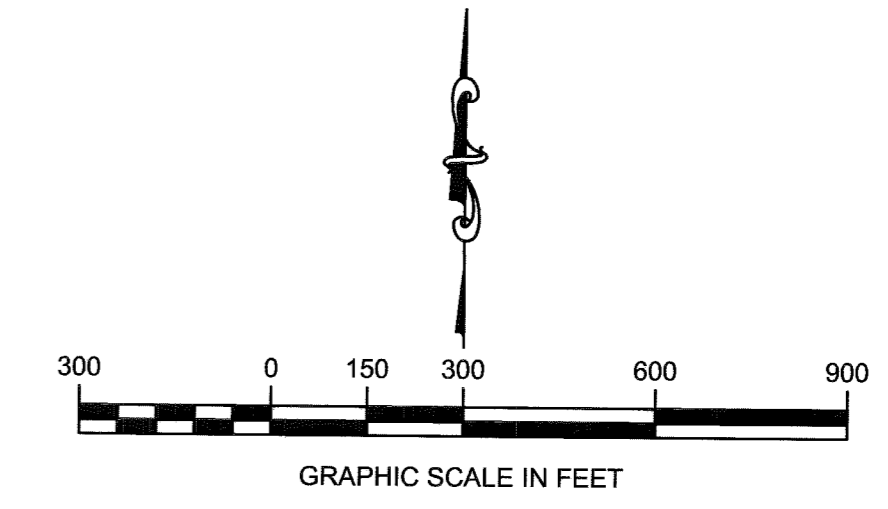
RECORD OF SURVEY
OF A PORTION OF THE
WESTERN BOUNDARY OF EIELSON AIR FORCE BASE

LYING WITHIN:
SECTIONS 14, 22, 23, 27, 28, & 33, TOWNSHIP 2 SOUTH, RANGE 3 EAST,
AND
SECTION 4, 9, 10, 15, 22, 23, 26, 35, & 36, TOWNSHIP 3 SOUTH, RANGE 3 EAST,
FAIRBANKS MERIDIAN, ALASKA



ALASKA DISTRICT
CORPS OF ENGINEERS
ANCHORAGE, ALASKA

CONTRACT NO.	W911K6-11-D-0003
CONTRACTOR	DOWL HKM
CITY	ANCHORAGE
STATE	ALASKA
PRIME CONTRACTOR	
DATE	



LEGEND

- ✦ SECTION CORNER MONUMENT AS DESCRIBED
- ⊥ QUARTER CORNER MONUMENT AS DESCRIBED
- ⊥ QUARTER CORNER MONUMENT AS DESCRIBED
- ✦ PRIMARY MONUMENT AS DESCRIBED
- ⊕ ALUMINUM MONUMENT AS DESCRIBED
- ⊕ SET ALUMINUM CAP ON REBAR AS DESCRIBED
- ⊕ FOUND ALUMINUM CAP DESCRIBED
- FOUND REBAR AS DESCRIBED
- ⓪ MONUMENT POINT IDENTIFIER NUMBER
- () RECORD MEASUREMENT

Revision	Date	Description	By	App'd

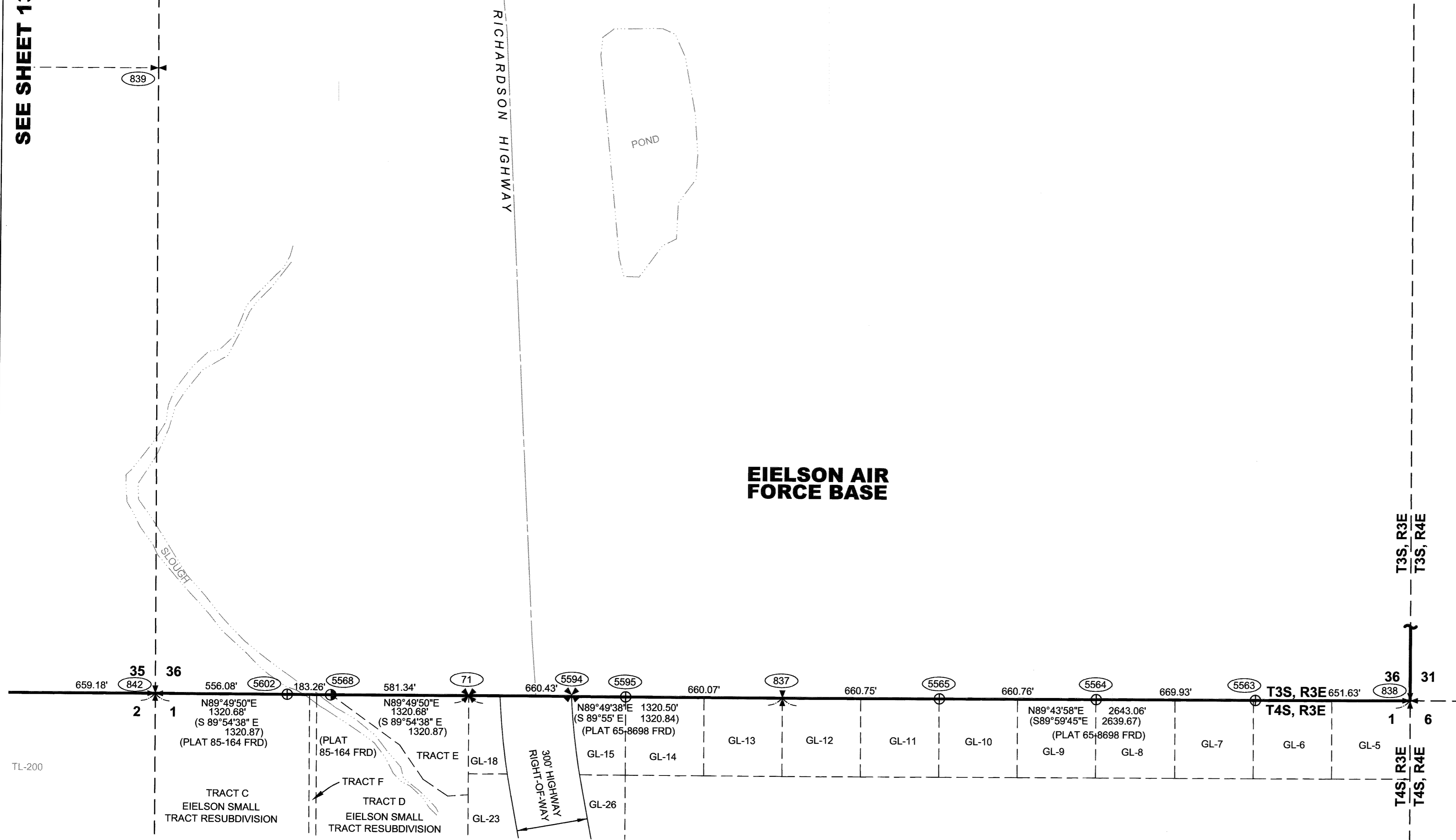
U.S. ARMY CORPS OF ENGINEERS ALASKA DISTRICT JBER, ALASKA 99506-0898	DATE: 6 FEB 2015 JOB NO.: 0913 CONTRACT NO.: W911K6-11-D-0003
SURVEYED BY: DOWL HKM DRAWN BY: MWD CHECKED BY: SEP	APPROVED BY: TJS SCALE: 1" = 200' 24" x 34"
FILE NO.: 02258001	PLOT DATE: 6 FEB 2015 UPC: 182286

FAIRBANKS RECORDING DISTRICT, ALASKA
EIELSON WESTERN BOUNDARY
EIELSON AIR FORCE BASE
RECORD OF SURVEY

Reference number:
15-04-715
Sheet 14 of 17

26 25
35 36
25 30
36 31

SEE SHEET 13



SEE SHEET 17 OF THIS SET
FOR CAP DETAILS

Fairbanks 2015-6

SHEET 2 MONUMENTS

<p>209</p> <p>T2S R3E FM WEST 1/16 COR FOR SECS 14 & 23 SET 3 1/2" BRASS CAP ON 2 1/2" IRON POST, 0.5' ABOVE GRADE SET CARSONITE WITNESS POST NEARBY.</p>	<p>211</p> <p>T2S R3E FM CENTER WEST 1/16 COR OF SEC 14 SET 3 1/2" BRASS CAP ON 2 1/2" IRON POST, 0.5' ABOVE GRADE SET CARSONITE WITNESS POST NEARBY.</p>	<p>747</p> <p>T2S R3E FM WC TO COR OF SECS 15, 16, 21 & 22 FOUND 3 1/4" BRASS CAP ON 2 1/2" IRON POST, 0.7' ABOVE GRADE, GOOD CONDITION FOUND CARSONITE WITNESS POST NEARBY.</p>	<p>753</p> <p>T2S R3E FM 1/4 COR FOR SECTIONS 15 & 22 FOUND 3 1/4" ALUMINUM CAP ON 2 3/8" IRON POST, 0.9' BELOW GRADE, GRADE IN A GRAVEL ROAD GOOD CONDITION FOUND CARSONITE WITNESS POSTS NEARBY.</p>	<p>754</p> <p>T2S R3E FM 1/4 COR FOR SECTIONS 16 & 15 FOUND 3 1/4" BRASS CAP ON 2 1/2" IRON POST, 0.3' BELOW GRADE, GOOD CONDITION FOUND CARSONITE WITNESS POST NEARBY.</p>	<p>840</p> <p>T2S R3E FM WC TO COR OF SECS 15, 14, 22, & 23 FOUND 3 1/4" BRASS CAP ON 2 1/2" IRON POST, 0.2' ABOVE GRADE, GOOD CONDITION FOUND CARSONITE WITNESS POST NEARBY.</p>	<p>841</p> <p>T2S R3E FM 1/4 COR FOR SECTIONS 15 & 14 FOUND 3 1/4" BRASS CAP ON 2 1/2" IRON POST, FLUSH W/ GRADE, GOOD CONDITION FOUND CARSONITE WITNESS POST NEARBY.</p>
---	---	--	--	---	---	---

SHEET 3 MONUMENTS

<p>105</p> <p>T2S R3E FM SOUTH 1/16 COR FOR SECS 22 & 23 SET 3 1/4" ALUMINUM CAP ON 2 1/2" IRON POST, 1.0' ABOVE GRADE SET CARSONITE WITNESS POSTS NEARBY.</p>	<p>106</p> <p>T2S R3E FM WC TO SE 1/16 COR OF SEC 22 SET 3 1/4" ALUMINUM CAP ON 2 1/2" IRON POST, 0.4' ABOVE GRADE SET CARSONITE WITNESS POST NEARBY.</p>	<p>107</p> <p>T2S R3E FM EAST 1/16 COR FOR SECS 22 & 27 SET 3 1/4" ALUMINUM CAP ON 2 1/2" IRON POST, 0.4' ABOVE GRADE SET CARSONITE WITNESS POSTS NEARBY.</p>	<p>108</p> <p>T2S R3E FM WC TO SE 1/16 COR OF SEC 22 SET 3 1/4" ALUMINUM CAP ON 2 1/2" IRON POST, 0.5' ABOVE GRADE SET CARSONITE WITNESS POST NEARBY.</p>	<p>208</p> <p>T2S R3E FM CENTER WEST 1/16 COR OF SEC 23 SET 3 1/2" BRASS CAP ON 2 1/2" IRON POST, FLUSH W/ GRADE SET CARSONITE WITNESS POSTS NEARBY.</p>	<p>209</p> <p>T2S R3E FM WEST 1/16 COR FOR SECS 14 & 23 SET 3 1/2" BRASS CAP ON 2 1/2" IRON POST, 0.5' ABOVE GRADE SET CARSONITE WITNESS POST NEARBY.</p>	<p>743</p> <p>T2S R3E FM CORNER OF SECS 21, 22, 28 & 27 FOUND 3 1/4" BRASS CAP ON 2 1/2" IRON POST, 0.3' BELOW GRADE, GOOD CONDITION FOUND CARSONITE WITNESS POST NEARBY.</p>	<p>744</p> <p>T2S R3E FM 1/4 CORNER FOR SECTIONS 22 & 27 FOUND 3 1/4" BRASS CAP ON 2 1/2" IRON POST, 0.1' ABOVE GRADE, GOOD CONDITION FOUND CARSONITE WITNESS POST NEARBY.</p>	<p>747</p> <p>T2S R3E FM WC TO COR OF SECS 15, 16, 21 & 22 FOUND 3 1/4" BRASS CAP ON 2 1/2" IRON POST, 0.7' ABOVE GRADE, GOOD CONDITION FOUND CARSONITE WITNESS POST NEARBY.</p>	<p>748</p> <p>T2S R3E FM 1/4 CORNER FOR SECTIONS 21 & 22 FOUND 3 1/4" BRASS CAP ON 2 1/2" IRON POST, FLUSH W/ GRADE, GOOD CONDITION FOUND CARSONITE WITNESS POST NEARBY.</p>	<p>752</p> <p>T2S R3E FM 1/4 CORNER FOR SECTIONS 22 & 23 FOUND 3 1/4" BRASS CAP ON 2 1/2" IRON POST, 0.1' BELOW GRADE, GOOD CONDITION FOUND CARSONITE WITNESS POST NEARBY.</p>	<p>753</p> <p>T2S R3E FM 1/4 CORNER FOR SECTIONS 15 & 22 FOUND 3 1/4" ALUMINUM CAP ON 2 3/8" IRON POST, 0.9' BELOW GRADE, GRADE IN A GRAVEL ROAD GOOD CONDITION FOUND CARSONITE WITNESS POSTS NEARBY.</p>
--	---	---	---	--	---	---	--	--	--	--	---

SHEET 3 MONUMENTS CONT'D

<p>803</p> <p>T2S R3E FM CORNER OF SECS 22, 23, 27 & 26 FOUND 3 1/4" BRASS CAP ON 2 1/2" IRON POST, FLUSH W/ GRADE, LEANING SLIGHTLY WEST, CAP BADLY SCARRED</p>	<p>840</p> <p>T2S R3E FM WC TO COR OF SECS 15, 14, 22, & 23 FOUND 3 1/4" BRASS CAP ON 2 1/2" IRON POST, 0.2' ABOVE GRADE, GOOD CONDITION FOUND CARSONITE WITNESS POST NEARBY.</p>
--	---

SHEET 4 MONUMENTS

<p>107</p> <p>T2S R3E FM EAST 1/16 COR FOR SECS 22 & 27 SET 3 1/4" ALUMINUM CAP ON 2 1/2" IRON POST, 0.4' ABOVE GRADE, GOOD CONDITION SET CARSONITE WITNESS POSTS NEARBY.</p>	<p>741</p> <p>T2S R3E FM 1/4 CORNER FOR SECTIONS 28 & 27 FOUND 3 1/4" BRASS CAP ON 2 1/2" IRON POST, 0.5' BELOW GRADE, GOOD CONDITION FOUND CARSONITE WITNESS POSTS NEARBY.</p>	<p>742</p> <p>T2S R3E FM NORTH 1/16 COR FOR SECS 28 & 27 FOUND 3 1/4" ALUMINUM CAP ON 2 1/2" IRON POST, 0.9' BELOW GRADE IN GRAVEL ROADWAY GOOD CONDITION</p>	<p>743</p> <p>T2S R3E FM CORNER OF SECS 21, 22, 28 & 27 FOUND 3 1/4" BRASS CAP ON 2 1/2" IRON POST, 0.3' BELOW GRADE, GOOD CONDITION FOUND CARSONITE WITNESS POST NEARBY.</p>	<p>744</p> <p>T2S R3E FM 1/4 CORNER FOR SECTIONS 22 & 27 FOUND 3 1/4" BRASS CAP ON 2 1/2" IRON POST, 0.1' ABOVE GRADE, GOOD CONDITION FOUND CARSONITE WITNESS POST NEARBY.</p>	<p>803</p> <p>T2S R3E FM CORNER OF SECS 22, 23, 27 & 26 FOUND 3 1/4" BRASS CAP ON 2 1/2" IRON POST, FLUSH W/ GRADE, LEANING SLIGHTLY WEST, CAP BADLY SCARRED</p>	<p>805</p> <p>T2S R3E FM 1/4 CORNER FOR SECTIONS 27 & 34 FOUND 3 1/4" BRASS CAP ON 2 1/2" IRON POST, 0.5' ABOVE GRADE, GOOD CONDITION FOUND CARSONITE WITNESS POST NEARBY.</p>	<p>806</p> <p>T2S R3E FM COR 2, LOT 7, S9074, WITHIN SEC 27 FOUND 3 1/4" ALUMINUM CAP ON 2 1/2" IRON POST, FLUSH W/ GRADE, 0.6' ABOVE GRADE GOOD CONDITION FOUND CARSONITE WITNESS POST NEARBY.</p>	<p>819</p> <p>T2S R3E FM CENTER 1/4 COR FOR SECTION 27 FOUND 3 1/4" ALUMINUM CAP ON 2" IRON POST, 0.1' ABOVE GRADE, GOOD CONDITION</p>
---	---	---	---	--	--	--	---	--

SHEET 5 MONUMENTS

<p>101</p> <p>T2S R3E FM WEST 1/16 COR FOR SECS 28 & 33 SET 3 1/4" ALUMINUM CAP ON 2 1/2" IRON POST, 0.8' ABOVE GRADE SET CARSONITE WITNESS POSTS NEARBY</p>	<p>703</p> <p>T2S R3E FM CORNER OF SECS 20, 21, 29 & 28 FOUND 3 1/4" BRASS CAP ON 2 1/2" IRON POST, 0.7' BELOW GRADE, (ORIGINAL BLM IRON POST FOUND NEARBY UPSIDE DOWN) GOOD CONDITION</p>	<p>704</p> <p>T2S R3E FM CENTER 1/4 COR FOR SECTION 28 FOUND 2 3/4" BRASS CAP IN 6" CONCRETE POST, 0.3' ABOVE GRADE, (USED FOR ROS 2006-50 NOW DISTURBED)</p>	<p>705</p> <p>T2S R3E FM WEST 1/16 COR FOR SECS 21 & 28 FOUND 3 1/4" ALUMINUM CAP ON 5/8" REBAR, 0.2' ABOVE GRADE, GOOD CONDITION FOUND CARSONITE WITNESS POSTS NEARBY</p>	<p>707</p> <p>T2S R3E FM CEN NORTH 1/16 COR FOR SEC 28 FOUND 2 1/2" BRASS CAP IN 6" DIA CONCRETE CYLINDER, 0.3' BELOW GRADE IN GRAVEL ROADWAY, GOOD CONDITION</p>	<p>708</p> <p>T2S R3E FM 1/4 CORNER FOR SECS 21 & 28 FOUND 3 1/4" ALUMINUM CAP ON 2 3/8" IRON POST, 0.2' ABOVE GRADE, GOOD CONDITION FOUND CARSONITE WITNESS POSTS NEARBY</p>	<p>740</p> <p>T2S R3E FM 1/4 COR FOR SECTIONS 29 & 28 FOUND 3 1/4" BRASS CAP ON 2 1/2" IRON POST, 0.6' BELOW LIP OF MON CASE IN ASPHALT SHOULDER, GOOD CONDITION</p>	<p>741</p> <p>T2S R3E FM 1/4 CORNER FOR SECTIONS 28 & 27 FOUND 3 1/4" BRASS CAP ON 2 1/2" IRON POST, 0.5' BELOW GRADE, GOOD CONDITION</p>	<p>742</p> <p>T2S R3E FM NORTH 1/16 COR FOR SECS 28 & 27 FOUND 3 1/4" ALUMINUM CAP ON 2 1/2" IRON POST, 0.9' BELOW GRADE IN GRAVEL ROADWAY GOOD CONDITION</p>	<p>743</p> <p>T2S R3E FM CORNER OF SECS 21, 22, 28 & 27 FOUND 3 1/4" BRASS CAP ON 2 1/2" IRON POST, 0.3' BELOW GRADE, GOOD CONDITION FOUND CARSONITE WITNESS POST NEARBY.</p>
<p>820</p> <p>T2S R3E FM CORNER OF SECS 28, 27, 33, & 34 FOUND IRON RAIL ROAD SPIKE IN ASPHALT FLUSH W/ GRADE, NOTE: SPIKE WAS DESTROYED DURING ROAD CONSTRUCTION AFTER BEING LOCATED.</p>	<p>919</p> <p>T2S R3E FM WC TO COR OF SECS 27, 28, 33, & 34 FOUND 3 1/4" BRASS CAP ON 2 1/2" IRON POST, 0.2' ABOVE GRADE, GOOD CONDITION FOUND CARSONITE WITNESS POST NEARBY.</p>	<p>923</p> <p>T2S R3E FM WCMC FOR SECTIONS 28 & 33 FOUND 3 1/4" BRASS CAP ON 2 1/2" IRON POST, 1.2' ABOVE GRADE, LEANING SOUTH, GOOD CONDITION FOUND CARSONITE WITNESS POST NEARBY.</p>	<p>924</p> <p>T2S R3E FM WCMC FOR SECTIONS 28 & 33 FOUND 3 1/4" BRASS CAP ON 2 1/2" IRON POST, 0.2' ABOVE GRADE, LEANING SLIGHTLY WEST, GOOD CONDITION FOUND CARSONITE WITNESS POST NEARBY.</p>	<p>928</p> <p>T2S R3E FM CORNER OF SECS 29, 28, 32, & 33 FOUND 3 1/4" BRASS CAP ON 2 1/2" IRON POST, 0.5' ABOVE GRADE GOOD CONDITION</p>					

ALL SHEETS

TYPICAL FOR ALL =

WITNESS POINTS ON LINE
SET
2 1/2" AL CAP ON 5/8" x 30" REBAR,
FLUSH W/ GRADE,
AT 60" INTERVALS,
SET CARSONITE WITNESS POST
NEARBY.



ALASKA DISTRICT
CORPS OF ENGINEERS
ANCHORAGE, ALASKA

CONTRACT NO.: W911KB-11-D-0003

CONTRACTOR: DOWL HKM

CITY: ANCHORAGE STATE: ALASKA

Recommended: _____ Date: _____

APPROVED: _____ CHIEF SURVEY SECTION

PRIME CONTRACTOR: _____

Revision	Date	Description	By	App'd

DATE: 6 FEB 2015

JOB NO.: 0813

DRAWN BY: MWD

CHECKED BY: SEP

APPROVED BY: TJS

SCALE: AS SHOWN

PLOT DATE: FEB 2015

FILES NAME: 102228

CONTRACT NO.: W911KB-11-D-0003

UPC: 102228

DATE: 6 FEB 2015

JOB NO.: 0813

DRAWN BY: MWD

CHECKED BY: SEP

APPROVED BY: TJS

SCALE: AS SHOWN

PLOT DATE: FEB 2015

FILES NAME: 102228

CONTRACT NO.: W911KB-11-D-0003

UPC: 102228

DATE: 6 FEB 2015

JOB NO.: 0813

DRAWN BY: MWD

CHECKED BY: SEP

APPROVED BY: TJS

SCALE: AS SHOWN

PLOT DATE: FEB 2015

FILES NAME: 102228

CONTRACT NO.: W911KB-11-D-0003

UPC: 102228

FAIRBANKS RECORDING DISTRICT, ALASKA
EIELSON WESTERN BOUNDARY
EIELSON AIR FORCE BASE
RECORD OF SURVEY

Reference number:
15-04-715

Sheet 15 of 17

Fairbanks 2015-6



ALASKA DISTRICT
CORPS OF ENGINEERS
ANCHORAGE, ALASKA

CONTRACT NO: W911KB-11-D-0003
CONTRACTOR: DOWL H&M
CITY: ANCHORAGE STATE: ALASKA
Recommended: Approved: Date:
PRIME CONTRACTOR: _____ CHIEF SURVEY SECTION: _____

Revision	Date	Description	By	App'd

DATE: 6 FEB 2015
JOB NO: 0813
CHECKED BY: MWD
DRAWN BY: MWD
APPROVED BY: TJS
SCALE: AS SHOWN
PLOT DATE: 11 FEB 2015
FILE NAME: 150226
CONTRACT NO.: W911KB-11-D-0003
UPC: 00226
DOWL H&M
4041 1st STREET, ANCHORAGE, ALASKA 99503
TEL: 907.562.2222 FAX: 907.562.9001

FAIRBANKS RECORDING DISTRICT, ALASKA
EIELSON WESTERN BOUNDARY
EIELSON AIR FORCE BASE
RECORD OF SURVEY

Reference number:
15-04-715
Sheet 16 of 17

SHEET 6 MONUMENTS

101 T2S R3E FM WEST 1/16 COR FOR SECS 28 & 33 SET 3 1/4" ALUMINUM CAP ON 2 1/2" ALUMINUM POST. 0.8' ABOVE GRADE. SET CARSONITE WITNESS POSTS NEARBY.

102 T2S R3E FM CENTER WEST 1/16 COR OF SEC 33 SET 3 1/4" ALUMINUM CAP ON 2 1/2" ALUMINUM POST. 0.7' ABOVE GRADE. SET CARSONITE WITNESS POSTS NEARBY.

103 T2S R3E FM SOUTH WEST 1/16 COR OF SEC 33 SET 3 1/4" ALUMINUM CAP ON 2 1/2" ALUMINUM POST. 0.5' ABOVE GRADE. SET CARSONITE WITNESS POSTS NEARBY.

333 T2S R3E FM BOUNDARY POINTS ON LINE FOUND 3 1/4" ALUMINUM CAP ON 3/4" x 1/8" ALUMINUM DRIVE ROD, 0.5' ABOVE GRADE. GOOD CONDITION FOUND CARSONITE WITNESS POST NEARBY.

334 T2S R3E FM BOUNDARY POINTS ON LINE FOUND 3 1/4" ALUMINUM CAP ON 3/4" x 1/8" ALUMINUM DRIVE ROD, FLUSH W/ GRADE. GOOD CONDITION FOUND CARSONITE WITNESS POST NEARBY.

548, 549, 550 T2S R3E FM WITNESS POINTS ON LINE FOUND 2 1/2" ALCAP ON 5/8" x 30" REBAR, FLUSH W/ GRADE. FOUND CARSONITE WITNESS POST NEARBY.

820 T2S R3E FM CORNER OF SECS 28, 27, 33, & 34 FOUND IRON RAIL ROAD SPIKE IN ASPHALT FLUSH W/ GRADE. NOTE: SPIKE WAS DESTROYED DURING ROAD CONSTRUCTION AFTER BEING LOCATED.

919 T2S R3E FM WC TO COR OF SECS 27, 28, 33, & 34 FOUND 3 1/4" BRASS CAP ON 2 1/2" IRON POST, 0.2' ABOVE GRADE. GOOD CONDITION FOUND CARSONITE WITNESS POST NEARBY.

923 T2S R3E FM WCMC FOR SECTIONS 28 & 33 FOUND 3 1/4" BRASS CAP ON 2 1/2" IRON POST, 1.2' ABOVE GRADE, LEANING SOUTH. GOOD CONDITION FOUND CARSONITE WITNESS POST NEARBY.

924 T2S R3E FM WCMC FOR SECTIONS 28 & 33 FOUND 3 1/4" BRASS CAP ON 2 1/2" IRON POST, 0.3' ABOVE GRADE, LEANING SLIGHTLY WEST. GOOD CONDITION FOUND CARSONITE WITNESS POST NEARBY.

925 T2S / T3S R3E FM 1/4 CORNER FOR SECTIONS 33 & 4 FOUND 3 1/4" BRASS CAP ON 2 1/2" IRON POST, 0.8' ABOVE GRADE. GOOD CONDITION FOUND CARSONITE WITNESS POST NEARBY.

928 T2S R3E FM CORNER OF SECS 29, 28, 32, & 33 FOUND 3 1/4" BRASS CAP ON 2 1/2" IRON POST, 0.5' ABOVE GRADE. GOOD CONDITION

SHEET 7 MONUMENTS

821 T3S R3E FM 1/4 CORNER FOR SECTIONS 4 & 9 FOUND 2 1/4" BRASS CAP ON 1 1/4" IRON POST, 2.0' ABOVE GRADE. FROZEN IN GOOD CONDITION (MAYBE SUBJECT TO MOVEMENT DURING THAW) FOUND CARSONITE WITNESS POST NEARBY.

925 T2S / T3S R3E FM 1/4 CORNER FOR SECTIONS 33 & 4 FOUND 3 1/4" BRASS CAP ON 2 1/2" IRON POST, 0.8' ABOVE GRADE. GOOD CONDITION FOUND CARSONITE WITNESS POST NEARBY.

SHEET 8 MONUMENTS

109 T3S R3E FM WC TO CENTER 1/4 COR OF SEC 9 SET 3 1/4" ALUMINUM CAP ON 2 1/2" ALUMINUM POST, 0.2' ABOVE GRADE. SET CARSONITE WITNESS POST NEARBY.

110 T3S R3E FM CENTER EAST 1/16 COR OF SEC 9 SET 3 1/4" ALUMINUM CAP ON 2 1/2" ALUMINUM POST, FLUSH W/ GRADE. SET CARSONITE WITNESS POST NEARBY.

111 T3S R3E FM SOUTH EAST 1/16 COR OF SEC 9 SET 3 1/4" ALUMINUM CAP ON 2 1/2" ALUMINUM POST, FLUSH W/ GRADE. SET CARSONITE WITNESS POST NEARBY.

807 T3S R3E FM 1/4 CORNER FOR SECTIONS 8 & 9 FOUND 2 1/2" BRASS CAP ON IRON POST, 0.7' BELOW GRADE, IN GRAVEL ROAD. CAP BADLY SCARRED

808 T3S R3E FM 1/4 CORNER FOR SECTIONS 9 & 16 FOUND 3 1/2" BRASS CAP ON IRON POST, 0.8' BELOW LIP OF MON CASE IN ASPHALT ROADWAY. GOOD CONDITION

810 T3S R3E FM SOUTH 1/16 COR OF SECS 9 & 10 FOUND 3 1/2" BRASS CAP ON 2 1/2" IRON POST, 0.5' ABOVE GRADE. GOOD CONDITION

812 T3S R3E FM CORNER OF SECTIONS 9, 10, 16, & 15 FOUND 3 1/4" BRASS CAP ON 2 1/2" IRON POST, 0.5' ABOVE GRADE. GOOD CONDITION

815 T3S R3E FM WCMC FOR SECS 9 & 10 FOUND 2 1/2" BRASS CAP ON IRON POST, 0.6' ABOVE GRADE. GOOD CONDITION

817 T3S R3E FM WCMC FOR SECTIONS 9 & 10 FOUND 2 1/2" BRASS CAP ON IRON POST, 0.6' ABOVE GRADE. GOOD CONDITION

818 T3S R3E FM 1/4 CORNER FOR SECTIONS 9 & 10 FOUND 3 1/2" BRASS CAP ON 2 1/2" IRON POST, 0.2' ABOVE GRADE. GOOD CONDITION

821 T3S R3E FM 1/4 CORNER FOR SECTIONS 4 & 9 FOUND 2 1/4" BRASS CAP ON 1 1/4" IRON POST, 2.0' ABOVE GRADE. FROZEN IN GOOD CONDITION (MAYBE SUBJECT TO MOVEMENT DURING THAW) FOUND CARSONITE WITNESS POST NEARBY

SHEET 9 MONUMENTS

810 T3S R3E FM SOUTH 1/16 COR FOR SECS 9 & 10 FOUND 3 1/2" BRASS CAP ON 2 1/2" IRON POST, 0.5' ABOVE GRADE. GOOD CONDITION

811 T3S R3E FM SOUTH WEST 1/16 COR OF SEC 10 FOUND 3 1/2" BRASS CAP ON 2 1/2" IRON POST, 0.1' ABOVE GRADE. GOOD CONDITION

812 T3S R3E FM CORNER OF SECTIONS 9, 10, 16, & 15 FOUND 3 1/4" BRASS CAP ON 2 1/2" IRON POST, 0.5' ABOVE GRADE. GOOD CONDITION

813 T3S R3E FM WEST 1/16 COR FOR SECS 10 & 15 FOUND 3 1/2" BRASS CAP ON 2 1/2" IRON POST, 0.1' ABOVE GRADE. GOOD CONDITION

814 T3S R3E FM WCMC FOR SECTIONS 10 & 15 FOUND 2 1/4" BRASS CAP ON 1 1/4" IRON POST, 1.0' ABOVE GRADE. GOOD CONDITION

815 T3S R3E FM WCMC FOR SECS 9 & 10 FOUND 3 1/2" BRASS CAP ON 2 1/2" IRON POST, 0.6' ABOVE GRADE. GOOD CONDITION

816 T3S R3E FM WCMC TO 1/4 COR FOR SECS 10 & 15 FOUND 3 1/2" BRASS CAP ON 2 1/2" IRON POST, 0.3' ABOVE GRADE. GOOD CONDITION

817 T3S R3E FM WCMC FOR SECTIONS 9 & 10 FOUND 2 1/4" BRASS CAP ON IRON POST, 0.6' ABOVE GRADE. GOOD CONDITION

818 T3S R3E FM 1/4 CORNER FOR SECTIONS 9 & 10 FOUND 3 1/2" BRASS CAP ON 2 1/2" IRON POST, 0.2' ABOVE GRADE. GOOD CONDITION

822 T3S R3E FM WCMC FOR SECTIONS 10 & 15 FOUND 2 1/4" BRASS CAP ON 1 1/4" IRON POST, 0.7' ABOVE GRADE. GOOD CONDITION

830 T3S R3E FM CORNER FOR SECS 10, 11, 15, & 14 FOUND 2 1/4" BRASS CAP ON 1 1/4" IRON PIPE, LAYING ON ITS SIDE AND BURIED. EXCAVATED AND RESET, 0.8' ABOVE GRADE. GOOD CONDITION

831 T3S R3E FM WCMC FOR SECTIONS 10 & 15 FOUND 2 1/4" BRASS CAP ON 1 1/4" IRON POST, 0.7' ABOVE GRADE. GOOD CONDITION

SHEET 10 MONUMENTS

72 T3S R3E FM CENTER EAST 1/16 COR FOR SEC 16 SET 3 1/4" ALUMINUM CAP ON 2 1/2" ALUMINUM POST. 0.1' ABOVE GRADE. SET CARSONITE WITNESS POSTS NEARBY.

73 T3S R3E FM NORTH EAST 1/16 COR FOR SEC 16 SET 3 1/4" ALUMINUM CAP ON 2 1/2" ALUMINUM POST. 0.6' ABOVE GRADE. SET CARSONITE WITNESS POSTS NEARBY.

74 T3S R3E FM CENTER NORTH 1/16 COR FOR SEC 16 SET 3 1/4" ALUMINUM CAP ON 2 1/2" ALUMINUM POST. FLUSH W/ GRADE. SET CARSONITE WITNESS POSTS NEARBY.

75 T3S R3E FM NORTH WEST 1/16 COR FOR SEC 16 SET 3 1/4" ALUMINUM CAP ON 2 1/2" ALUMINUM POST. 0.1' ABOVE GRADE. SET CARSONITE WITNESS POSTS NEARBY.

114 T3S R3E FM EAST 1/16 COR FOR SECS 15 & 22 SET 3 1/4" ALUMINUM CAP ON 2 1/2" ALUMINUM POST. 0.5' ABOVE GRADE. SET CARSONITE WITNESS POSTS NEARBY.

203 T3S R3E FM WCMC TO 1/4 COR FOR SECS 15 & 14 FOUND 2 1/4" BRASS CAP ON 1 1/2" IRON PIPE, ON ITS SIDE NOT IN ORIGINAL POSITION. REPLACED W/ 3 1/4" ALUMINUM CAP ON 2 1/2" ALUMINUM POST. FLUSH W/ GRADE. BURIED ORIGINAL MONUMENT NEARBY UPSIDE DOWN. SET CARSONITE WITNESS POSTS NEARBY.

809 T3S R3E FM 1/4 CORNER FOR SECTIONS 15 & 15 FOUND 3 1/2" BRASS CAP ON 2 1/2" IRON POST, IN MON CASE, 1.0' BELOW LIP OF ASPHALT ROADWAY. GOOD CONDITION

812 T3S R3E FM CORNER OF SECTIONS 9, 10, 16, & 15 FOUND 3 1/4" BRASS CAP ON 2 1/2" IRON POST, 0.5' ABOVE GRADE. GOOD CONDITION

813 T3S R3E FM WEST 1/16 COR FOR SECS 10 & 15 FOUND 3 1/2" BRASS CAP ON 2 1/2" IRON POST, 0.1' ABOVE GRADE. GOOD CONDITION

814 T3S R3E FM WCMC FOR SECTIONS 10 & 15 FOUND 2 1/4" BRASS CAP ON 1 1/4" IRON POST, 1.0' ABOVE GRADE. GOOD CONDITION

816 T3S R3E FM WCMC FOR SECTIONS 10 & 15 FOUND 2 1/4" BRASS CAP ON 1 1/4" IRON POST, 0.7' ABOVE GRADE. GOOD CONDITION

822 T3S R3E FM WCMC FOR SECTIONS 10 & 15 FOUND 2 1/4" BRASS CAP ON 1 1/4" IRON POST, 0.7' ABOVE GRADE. GOOD CONDITION

830 T3S R3E FM CORNER FOR SECS 10, 11, 15, & 14 FOUND 2 1/4" BRASS CAP ON 1 1/4" IRON PIPE, LAYING ON ITS SIDE AND BURIED. EXCAVATED AND RESET, 0.8' ABOVE GRADE. GOOD CONDITION

831 T3S R3E FM WCMC FOR SECTIONS 10 & 15 FOUND 2 1/4" BRASS CAP ON 1 1/4" IRON POST, 0.7' ABOVE GRADE. GOOD CONDITION

833 T3S R3E FM WCMC FOR SECTIONS 15 & 14 FOUND 2 1/4" BRASS CAP ON 1 1/4" IRON POST, BENT AND LEANING NORTHEAST, STRAIGHTENED TO ORIGINAL POSITION, 0.8' ABOVE GRADE. GOOD CONDITION

834 T3S R3E FM WCMC FOR SECTIONS 15 & 14 FOUND 2 1/4" BRASS CAP ON 1 1/4" IRON POST, BENT AND LEANING NORTHEAST, STRAIGHTENED TO ORIGINAL POSITION, 0.8' ABOVE GRADE. GOOD CONDITION

835 T3S R3E FM CORNER FOR SECS 15, 14, 22, & 23 FOUND 2 1/2" BRASS CAP ON 2" IRON POST, 0.4' ABOVE GRADE. 5" ALDER GROWING UNDER EDGE OF MONUMENT. GOOD CONDITION

ALL SHEETS

TYPICAL FOR ALL = ☐

XXX
EIELSON MILITARY RESERVATION
WITNESS POINTS ON LINE SET 2 1/2" ALCAP ON 5/8" x 30" REBAR, FLUSH W/ GRADE, AT 60" INTERVALS. SET CARSONITE WITNESS POST NEARBY.

Fairbanks 2015-6



ALASKA DISTRICT
CORPS OF ENGINEERS
ANCHORAGE, ALASKA

CONTRACT NO.	W911KB-11-D-0003
CONTRACTOR	DOWLHKM
CITY	ANCHORAGE
STATE	ALASKA
DATE	
APPROVED BY	
PRIME CONTRACTOR	
CHIEF SURVEY SECTION	

Revision	Date	Description	By	Appr

SURVEYED BY:	DOWLHKM
CHECKED BY:	MWD
DRAWN BY:	SEP
APPROVED BY:	JAS
DATE:	6 FEB 2015
JOB NO.:	0818
CONTRACT NO.:	W911KB-11-D-0003
JRPC:	020206
SCALE:	AS SHOWN
PLAT DATE:	02/26/2010
FILE NAME:	020206V01
DATE:	6 FEB 2015
JOB NO.:	0818
CONTRACT NO.:	W911KB-11-D-0003
JRPC:	020206
SCALE:	AS SHOWN
PLAT DATE:	02/26/2010
FILE NAME:	020206V01

U.S. ARMY CORPS OF ENGINEERS
ALASKA DISTRICT
P.O. BOX 98506
JBER, ALASKA 99506-0858

DOWLHKM
CORPORATION

FAIRBANKS RECORDING DISTRICT, ALASKA
EIELSON WESTERN BOUNDARY
EIELSON AIR FORCE BASE
RECORD OF SURVEY

Reference number:	15-04-715
Sheet 17 of 17	

SHEET 11 MONUMENTS

<p>114</p>	<p>828</p>	<p>832</p>	<p>834</p>	<p>835</p>
------------	------------	------------	------------	------------

SHEET 12 MONUMENTS

<p>TYPICAL</p>	<p>TYPICAL</p>	<p>TYPICAL</p>	<p>825</p>	<p>826</p>	<p>827</p>	<p>828</p>	<p>829</p>
----------------	----------------	----------------	------------	------------	------------	------------	------------

SHEET 13 MONUMENTS

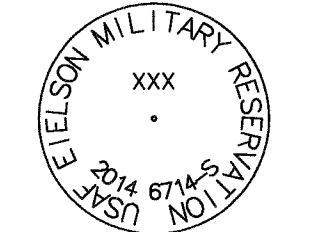
<p>TYPICAL</p>	<p>TYPICAL</p>	<p>TYPICAL</p>	<p>64</p>	<p>65</p>	<p>823</p>	<p>825</p>	<p>827</p>	<p>836</p>	<p>839</p>	<p>842</p>
----------------	----------------	----------------	-----------	-----------	------------	------------	------------	------------	------------	------------

SHEET 14 MONUMENTS

<p>71</p>	<p>837</p>	<p>838</p>	<p>839</p>	<p>842</p>
-----------	------------	------------	------------	------------

ALL SHEETS

TYPICAL FOR ALL =



WITNESS POINTS ON LINE
SET
2 1/2\"/>

2015-6
Plat #
Fairbanks
Rec Dist
2-11 2015
Date
Time 3:10 P.M.

Fairbanks 2015-6