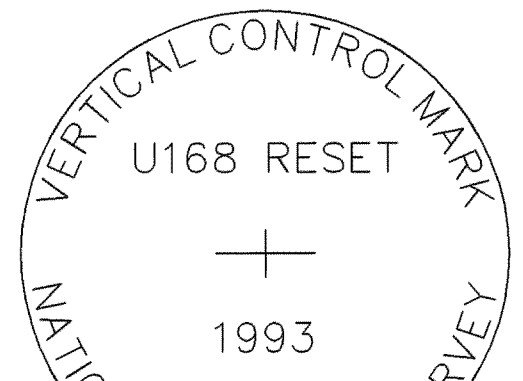


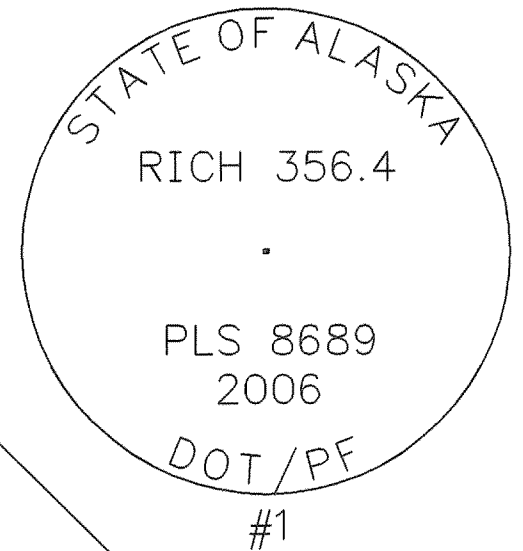
GENERAL NOTES

1. ALL PROJECT COORDINATES AND DISTANCES ARE GROUND BASED IN US SURVEY FEET, UNLESS OTHERWISE NOTED.
2. THE BASIS OF COORDINATES ARE NAD83 LATITUDE 64°48'08.78721" N, LONGITUDE 147°33'29.69395" W, ALASKA STATE PLANE ZONE 3 NORTHING 1204187.758, EASTING 425959.560 METRIC AS PER ALASKA STATUTE 38.20.040. PROJECT COORDINATES NORTHING 3950739.34, EASTING 1397502.32 FEET AT POINT #1 = GPS RICH356.4.
3. THE BASIS OF BEARING IS ALASKA STATE PLANE ZONE 3 GRID BEARING OF S 50°51'00" E BETWEEN POINT #1 = GPS RICH356.4 AND POINT #6 = GPS RICH354.3.
4. THE BASIS OF VERTICAL CONTROL IS THE NAVD 88 (GEOID 06) ORTHOMETRIC ELEVATION OF 457.38 AT USC&GS BENCHMARK "U168 RESET".
5. THE BASIS OF STATIONING IS "L" 471+59.79 PC AT THE SPLIT OF 2 RECOVERED ROW MONUMENTS. FROM 1964 STATE OF ALASKA, RICHARDSON HIGHWAY FAIRBANKS TO EIELSON ASBUILT PLANS F-062-4(16).
6. THE BASIS OF HORIZONTAL CONTROL WAS ESTABLISHED DURING STATIC GPS SURVEYS THAT WERE CONDUCTED BY THE STATE OF ALASKA LOCATION SECTION BETWEEN 06/06/06 AND 08/28/06.
7. AN INVERSE COMBINED SCALE FACTOR OF 1.000058794 WAS APPLIED TO THE GPS TO GET GROUND BASED COORDINATES.
8. VERIFY HORIZONTAL AND VERTICAL CONTROL PRIOR TO USE. ON MULTI-YEAR PROJECTS VERIFY CONTROL ON A SEASONAL BASIS.
9. THIS SURVEY DOES NOT CONSTITUTE A SUBDIVISION AS DEFINED BY ALASKA STATUTE 40.15.900(5)(A).
10. SEE SHEET NO 3 FOR TRAVERSE POINT, MONUMENT, TBM AND BENCHMARK COORDINATE TABLES.
11. ROW LINES DEPICTED IN THIS DRAWING ARE FOR VISUAL PURPOSES ONLY.
12. THE TRAVERSE CLOSURE OF THIS PROJECT MEETS OR EXCEEDS 1:10,000.
13. THIS CONTROL DRAWING WAS PRODUCED PRIOR TO ANY DESIGN CONSIDERATIONS.

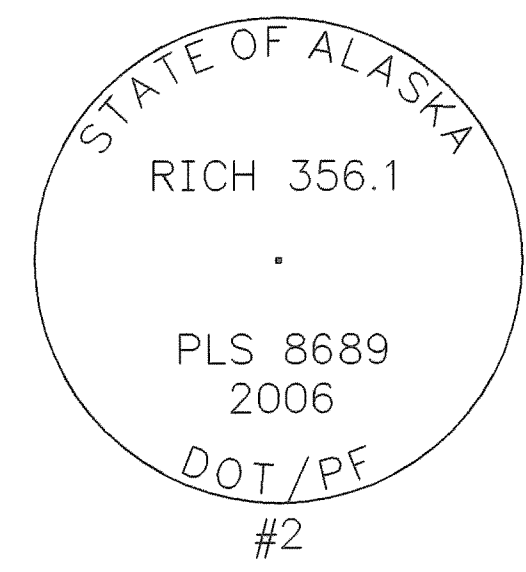
BASIS OF VERTICAL
USC&GS BENCHMARK
"U168 RESET"
ELEVATION=457.38



BASIS OF COORDINATES
POINT #1 = GPS RICH356.4
LATITUDE 64°48'08.78721" N
LONGITUDE 147°33'29.69395" W
NORTHING 1204187.758 METRIC
EASTING 425959.560 METRIC
PROJECT COORDINATES
NORTHING 3950739.34 FEET
EASTING 1397502.32 FEET



BASIS OF COORDINATES
POINT #1 = GPS RICH356.4
LATITUDE 64°48'08.78721" N
LONGITUDE 147°33'29.69395" W
NORTHING 1204187.758 METRIC
EASTING 425959.560 METRIC
PROJECT COORDINATES
NORTHING 3950739.34 FEET
EASTING 1397502.32 FEET



#1070
#1012

#1011
"L" 349+75.00 BOP

S 52°33'16" E
8751.90

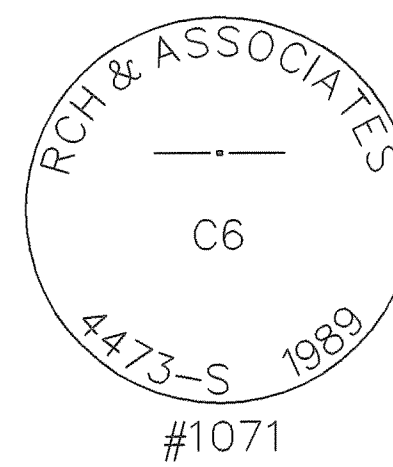
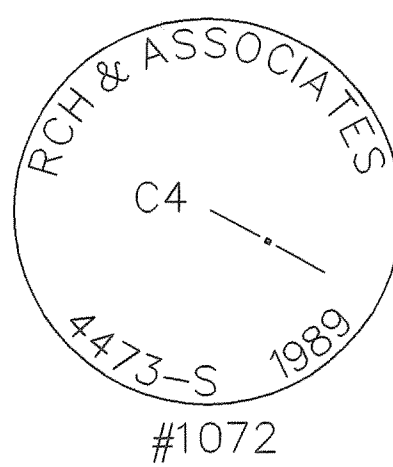
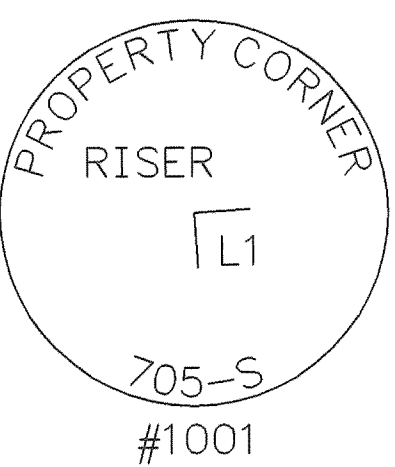
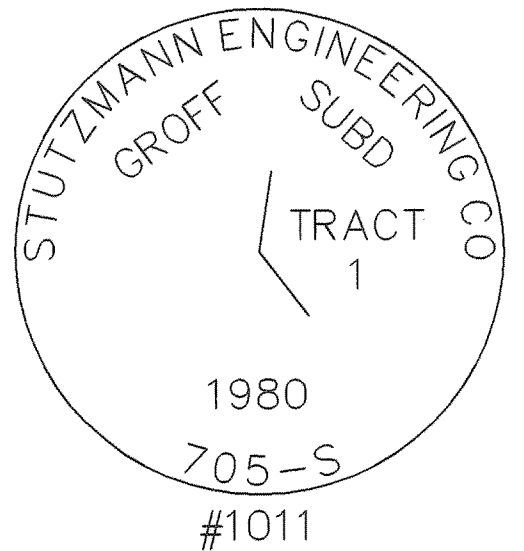
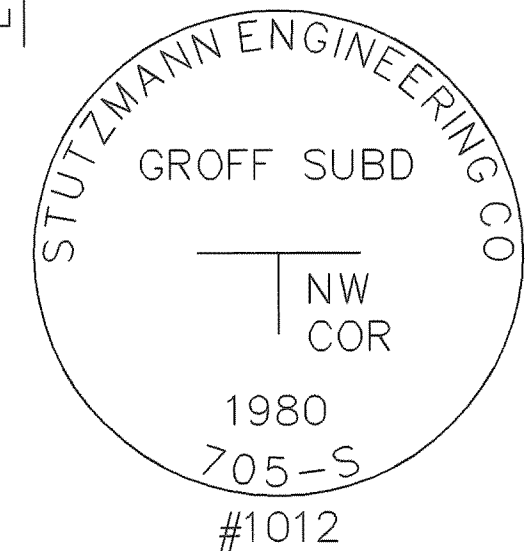
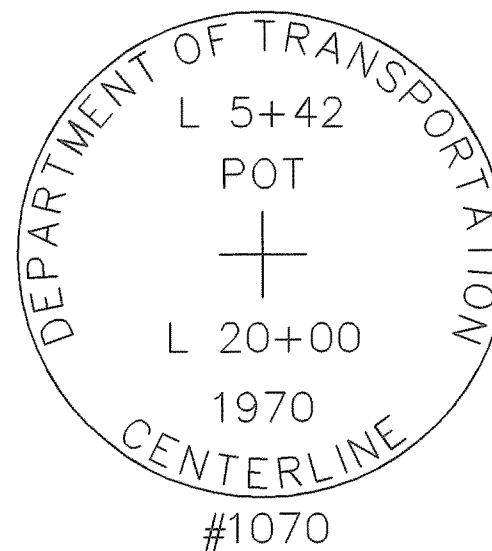
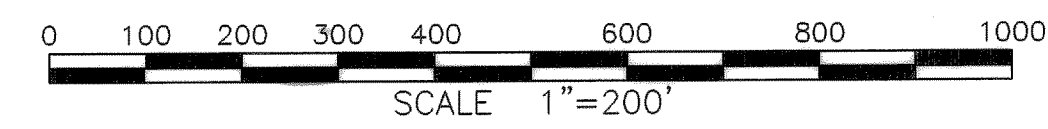
TBM 06-01 X SCRIBED
ON NE BOLT OF THE
NORTH POST OF THE SIGN
ELEVATION=462.47

BASIS OF BEARING S 50°51'00" E 10847.98
#1075 #1074 #1073
#1001 #1072 #1071

TBM 06-02 X SCRIBED
ON NW BOLT OF THE
SOUTH POST OF SIGN
ELEVATION=464.02

LEGEND

- PRIMARY MONUMENT SET
- SPIKE SET
- PK NAIL SET
- PRIMARY MONUMENT RECOVERED
- GLO MONUMENT RECOVERED
- C/L MONUMENT IN CASE RECOVERED
- REBAR & CAP RECOVERED
- REBAR RECOVERED
- USC&GS BENCHMARK RECOVERED
- TBM SIGN POST SET
- TBM GUARD RAIL SET
- TBM SPRUCE TREE SET
- TBM BROADLEAF TREE SET
- TBM TELEPHONE POLE SET
- TBM POWER POLE SET
- C/L CONTROL NOT SET



I hereby certify that I am properly Registered and Licensed to practice Land Surveying in the State of Alaska, and that this plat represents a survey made by me or under my direct supervision, and that the monuments shown hereon actually exist as described, and that all dimensions and other details are correct to the extent shown hereon.

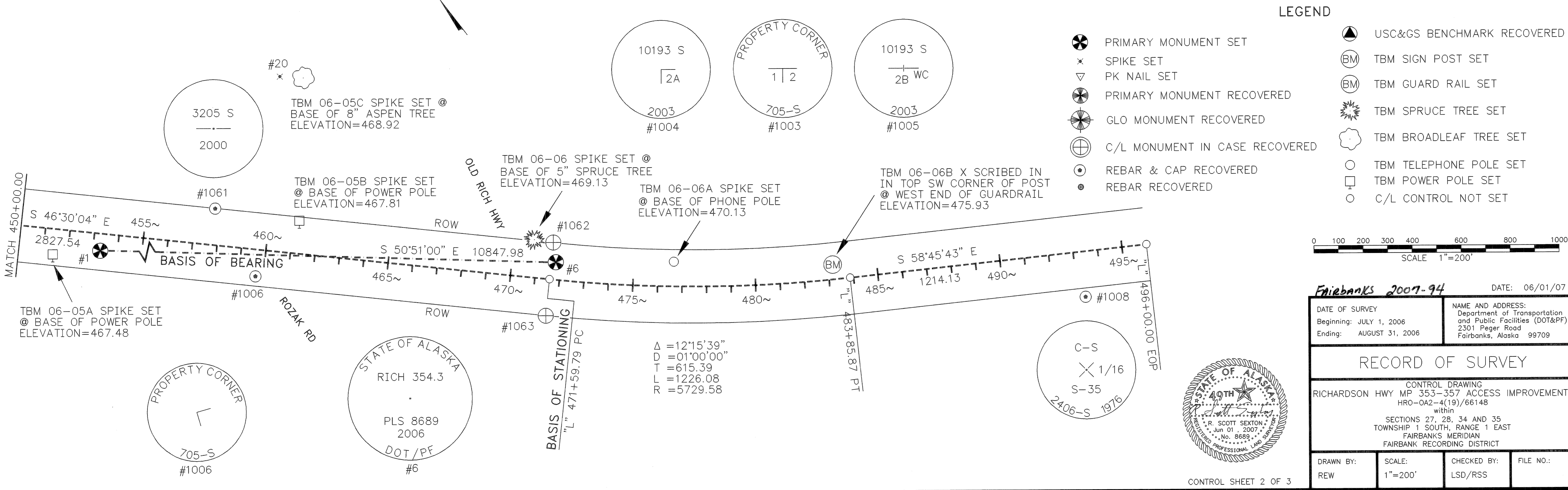
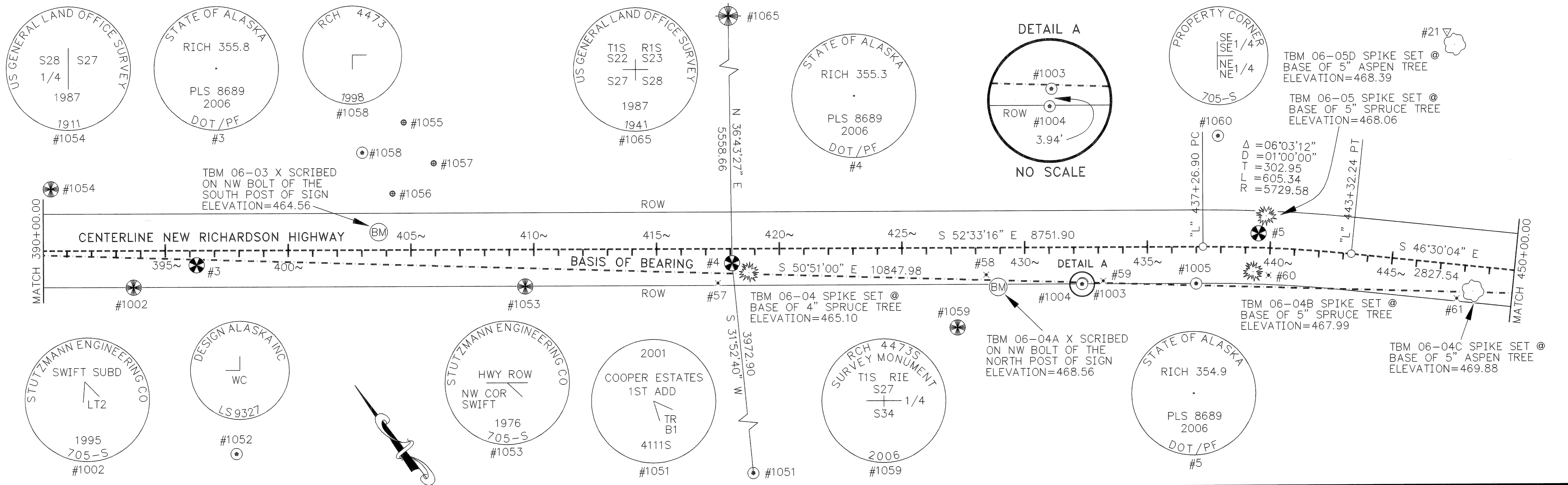
DATE: 6-1-07 LS-8689
Registration Number
R. Scott Sexton
Registered Land Surveyor



RECORD OF SURVEY

Fairbanks 2007-94 DATE: 06/01/07

DATE OF SURVEY Beginning: JULY 1, 2006 Ending: AUGUST 31, 2006	NAME AND ADDRESS: Department of Transportation and Public Facilities (DOT&PF) 2301 Peger Road Fairbanks, Alaska 99709		
CONTROL DRAWING RICHARDSON HWY MP 353-357 ACCESS IMPROVEMENTS HRO-0A2-4(19)/66148 within SECTIONS 27, 28, 34 AND 35 TOWNSHIP 1 SOUTH, RANGE 1 EAST FAIRBANKS MERIDIAN FAIRBANK RECORDING DISTRICT			
DRAWN BY: REW	SCALE: 1"=200'	CHECKED BY: LSD/RSS	FILE NO.:



MONUMENT COORDINATE TABLE

STATION	OFFSET	PT#	NORTHING	EASTING	DESCRIPTION
N/A	N/A	1012	3951969.75	1396492.42	PRIMARY MONUMENT RECOVERED
N/A	N/A	1070	3954557.86	1395571.57	MONUMENT IN CASE RECOVERED
349+75.96	-150.84	1011	3951630.76	1396484.80	PRIMARY MONUMENT RECOVERED
364+37.79	-151.41	1075	3950742.42	1397645.74	REBAR & CAP RECOVERED
365+75.49	150.76	1001	3950418.79	1397571.34	REBAR & CAP RECOVERED
366+54.98	-150.79	1074	3950609.87	1397817.80	PRIMARY MONUMENT RECOVERED
372+03.87	198.39	1072	3949998.92	1398041.28	REBAR & CAP RECOVERED
372+38.66	150.90	1071	3950015.47	1398097.77	REBAR & CAP RECOVERED
372+65.20	-149.72	1073	3950238.00	1398301.62	REBAR & CAP RECOVERED
374+77.94	-2385.51	1064	3951883.72	1399829.90	PRIMARY MONUMENT RECOVERED
376+13.02	-1426.48	1009	3951040.19	1399354.04	REBAR & CAP RECOVERED
377+48.16	-950.00	1010	3950579.72	1399171.63	REBAR & CAP RECOVERED
390+35.13	-252.64	1054	3949243.58	1399769.40	PRIMARY MONUMENT RECOVERED
393+70.85	150.87	1002	3948719.10	1399790.60	PRIMARY MONUMENT RECOVERED
397+87.17	832.83	1052	3947924.54	1399706.49	REBAR & CAP RECOVERED
403+03.22	-398.48	1058	3948588.36	1400864.85	REBAR & CAP RECOVERED
404+25.61	-230.66	1056	3948380.71	1400859.98	REBAR RECOVERED
404+72.22	-521.78	1055	3948583.50	1401073.99	REBAR RECOVERED
405+94.34	-354.27	1057	3948376.26	1401069.09	REBAR RECOVERED
409+64.46	151.58	1053	3947749.61	1401055.39	PRIMARY MONUMENT RECOVERED
417+36.86	-5499.05	1065	3951766.19	1405104.24	GLO MONUMENT RECOVERED
421+92.30	4013.32	1051	3943937.12	1399682.24	REBAR & CAP RECOVERED
427+25.01	326.36	1059	3946540.42	1402346.88	PRIMARY MONUMENT RECOVERED
432+33.22	150.77	1004	3946370.83	1402860.52	REBAR & CAP RECOVERED
432+34.71	147.13	1003	3946372.82	1402857.11	REBAR & CAP RECOVERED
436+98.41	150.79	1005	3946087.98	1403226.44	REBAR & CAP RECOVERED
437+85.65	-453.85	1060	3946511.89	1403666.82	REBAR & CAP RECOVERED
457+77.17	-148.75	1061	3944910.94	1404951.54	REBAR & CAP RECOVERED
459+68.18	110.36	1006	3944591.50	1404911.74	REBAR & CAP RECOVERED
469+62.44	1236.82	1007	3943089.99	1404857.57	PRIMARY MONUMENT RECOVERED
471+59.79	-150.75	1062	3943960.68	1405955.85	CONCRETE MONUMENT RECOVERED
471+59.79	150.75	1063	3943741.97	1405748.31	CONCRETE MONUMENT RECOVERED
493+30.41	186.33	1008	3942459.43	1407535.61	REBAR & CAP RECOVERED

BENCHMARK - TBM COORDINATE TABLE

STATION	OFFSET	PT#	NORTHING	EASTING	ELEVATION	DESCRIPTION
N/A	N/A	U168	3958131	1396528	457.38	USC&GS BENCHMARK RECOVERED
363+95	-4	06-01	3950651	1397522	462.47	BOLT ON SIGN SET
381+76	2	06-02	3949563	1398932	464.02	BOLT ON SIGN SET
403+69	-73	06-03	3948290	1400719	464.56	BOLT ON SIGN SET
418+65	98	06-04	3947245	1401803	465.10	SPRUCE TREE SET
428+91	161	06-04A	3946571	1402579	468.56	BOLT ON SIGN SET
439+73	98	06-04B	3945961	1403470	467.99	SPRUCE TREE SET
439+64	-100	06-05	3946119	1403590	468.06	SPRUCE TREE SET
446+65	-895	06-05D	3946218	1404659	468.39	ASPEN TREE SET
448+32	103	06-04C	3945379	1404093	469.88	ASPEN TREE SET
451+40	105	06-05A	3945166	1404315	467.48	POWER POLE SET
460+78	-718	06-05C	3945116	1405562	468.92	ASPEN TREE SET
461+23	-135	06-05B	3944663	1405192	467.81	POWER POLE SET
471+48	-153	06-06	3943970	1405948	469.13	SPRUCE TREE SET
476+65	-101	06-06A	3943599	1406296	470.13	PHONE POLE SET
483+20	-60	06-06B	3943194	1406801	475.93	GUARDRAIL SET

CONTROL POINT COORDINATE TABLE

STATION	OFFSET	PT#	NORTHING	EASTING	DESCRIPTION
363+25.80	-61.77	1	3950739.34	1397502.32	PRIMARY MONUMENT SET
372+37.11	86.43	51	3950067.59	1398135.74	SPIKE SET
377+96.34	155.84	52	3949672.47	1398537.53	PK NAIL SET
381+03.61	64.46	2	3949558.20	1398837.04	PRIMARY MONUMENT SET
385+26.91	138.81	53	3949241.79	1399127.90	SPIKE SET
396+27.30	60.20	3	3948635.16	1400049.33	PRIMARY MONUMENT SET
417+48.75	140.53	57	3947281.53	1401684.77	SPIKE SET
418+06.84	59.17	4	3947310.81	1401780.36	PRIMARY MONUMENT SET
428+42.47	111.41	58	3946639.66	1402570.82	SPIKE SET
433+19.48	137.92	59	3946328.59	1402933.41	SPIKE SET
439+51.31	-57.62	5	3946094.81	1403552.98	PRIMARY MONUMENT SET
439+98.25	112.01	60	3945934.74	1403479.95	SPIKE SET
446+28.69	-942.01	21	3946276.91	1404664.48	PK NAIL SET
447+77.76	137.95	61	3945390.91	1404029.23	SPIKE SET
459+82.94	-713.19	20	3945178.73	1405489.33	SPIKE SET
471+78.66	-71.59	6	3943890.45	1405914.89	PRIMARY MONUMENT SET

DATE: 06/01/07

DATE OF SURVEY Beginning: JULY 1, 2006 Ending: AUGUST 31, 2006	NAME AND ADDRESS: Department of Transportation and Public Facilities (DOT&PF) 2301 Peger Road Fairbanks, Alaska 99709
--	---

RECORD OF SURVEY

CONTROL DRAWING
RICHARDSON HWY MP 353-357 ACCESS IMPROVEMENTS
HRO-0A2-4(19)/66148
within
SECTIONS 27, 28, 34 AND 35
TOWNSHIP 1 SOUTH, RANGE 1 EAST
FAIRBANKS MERIDIAN
FAIRBANK RECORDING DISTRICT

DRAWN BY: REW	SCALE: N/A	CHECKED BY: LSD/RSS	FILE NO.:
------------------	---------------	------------------------	-----------

2607-94
Fairbanks REC DIST
DATE 06-05 2007
TIME 3:05 P.M.
Requested By AS1DOT
Address

