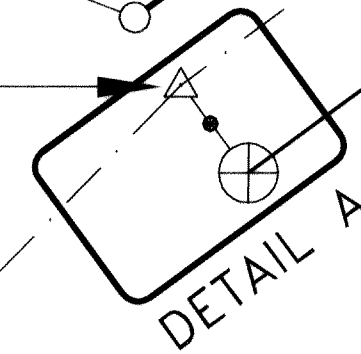


BASIS OF COORDINATES  
SEE NOTE #2

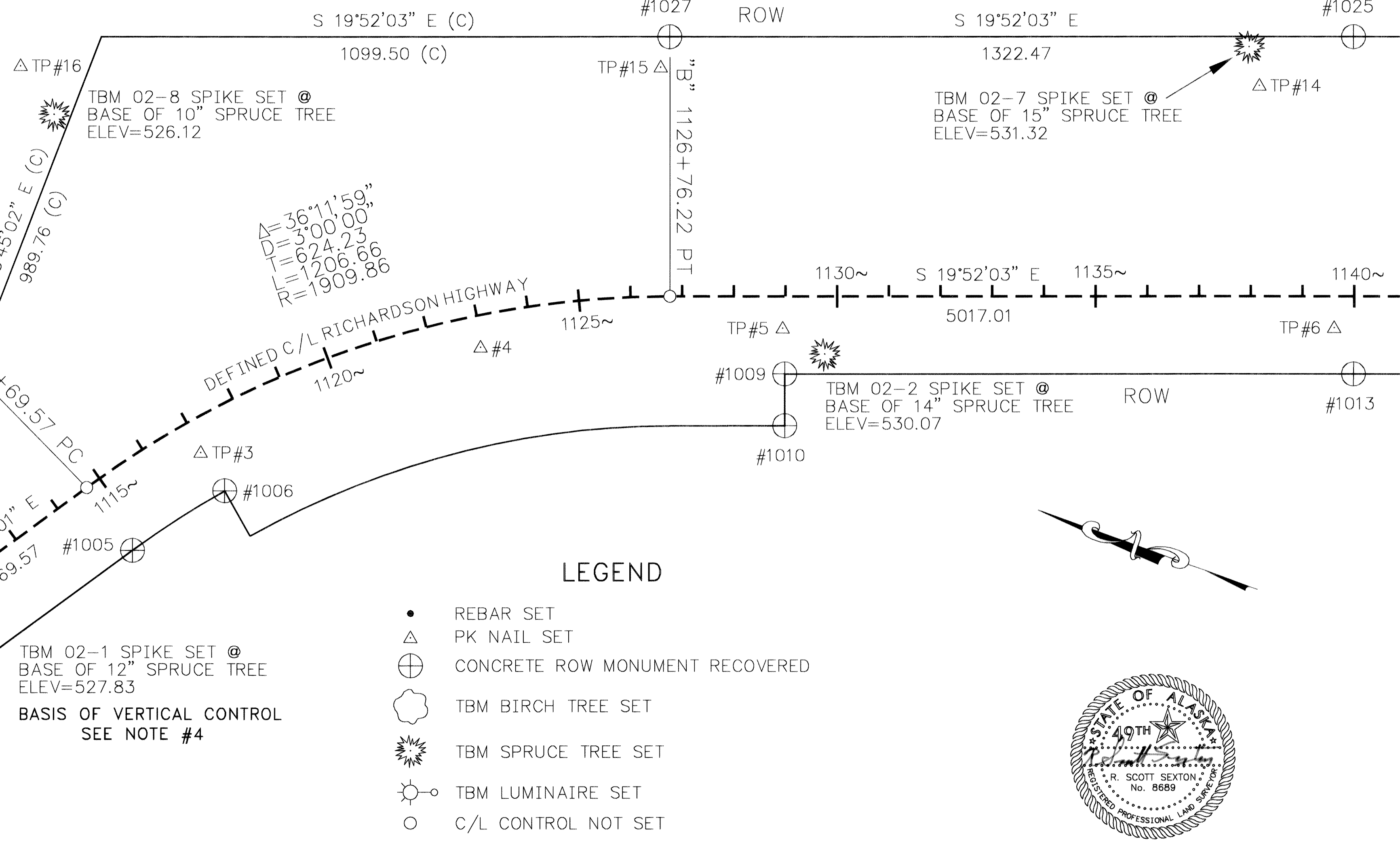


TP #2  
PROJECT REH-RS-000S(159)  
SEE NOTE #2

"B" 1100+00.00 BOP

BASIS OF BEARING S 56°13'13" E  
986.10

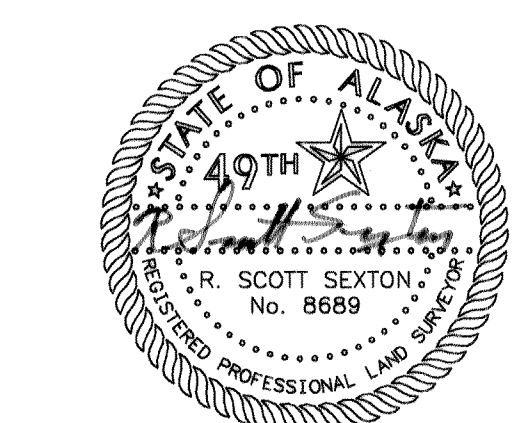
SECTION 28  
SECTION 33



- LEGEND**
- REBAR SET
  - △ PK NAIL SET
  - ⊕ CONCRETE ROW MONUMENT RECOVERED
  - ⊙ TBM BIRCH TREE SET
  - ⊙ TBM SPRUCE TREE SET
  - ⊙ TBM LUMINAIRE SET
  - C/L CONTROL NOT SET

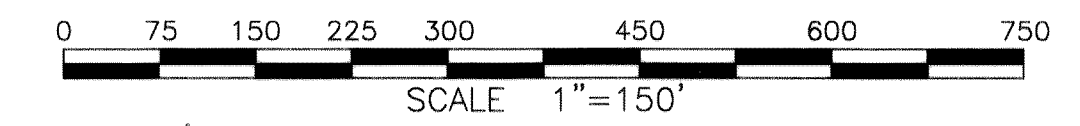
**GENERAL NOTES**

1. ALL DISTANCES ARE GROUND DISTANCES IN US SURVEY FEET.
2. THE BASIS OF COORDINATES ARE NORTHING 3914083.33 FEET, EASTING 1459874.26 FEET AT TP #1. THESE COORDINATES WERE ESTABLISHED BY A CLOSED TRAVERSE INTO THE CONTROL FOR THE 2002 RICHARDSON HIGHWAY MP 345 GRADE SEPARATED RR CROSSING PROJECT REH-RS-000S(159)/66566 WHICH IS LATITUDE 64°43'21.55420" N, LONGITUDE 147°14'42.81829" W, NAD83 ZONE3 ALASKA STATE PLANE COORDINATES OF NORTHING 1194965.338 M, EASTING 440656.271 M, NORTHING 3920482.11 FT, EASTING 1445719.78 FT.
3. THE BASIS OF BEARING IS S 56°13'13" E BETWEEN TP #1 AND TP #2.
4. THE BASIS OF VERTICAL IS THE NAVD88 ORTHOMETRIC HEIGHT OF 527.83 AT TBM 02-1. THIS ELEVATION WAS TRANSFERRED BY CONVENTIONAL LEVELING FROM USC&GS AZIMUTH MARK "DORAN" ELEVATION 517.41, WHICH IS LOCATED AT ± MP 344.3 RICHARDSON HIGHWAY, ±100' NORTH OF C/L WEST BOUND LANE.
5. THE BASIS OF STATIONING FOR THE DEFINED CENTERLINE OF THE RICHARDSON HIGHWAY IS 1100+00.00. THE STATIONING WAS DETERMINED BY A SPLIT OF RECOVERED ROW MONUMENTS. FROM STATE OF ALASKA ASBUILT PLANS DP-F-062-4(29).
6. THIS CONTROL DRAWING WAS PRODUCED PRIOR TO ANY DESIGN CONSIDERATIONS.
7. ROW LINES OTHER THAN THOSE BETWEEN FOUND MONUMENTS ARE FOR VISUAL PURPOSES ONLY.
8. THE COORDINATES OF REFERENCE REBAR ARE AVAILABLE UPON REQUEST FROM STATE OF ALASKA NORTHERN REGION LOCATION SECTION.



I hereby certify that I am properly Registered and Licensed to practice Land Surveying in the State of Alaska, and that this plat represents a survey made by me or under my direct supervision, and that the monuments shown hereon actually exist as described, and that all dimensions and other details are correct to the extent shown hereon.

DATE: 10-15-04 LS-8689  
 Registration Number  
 R Scott Sexton Registered Land Surveyor



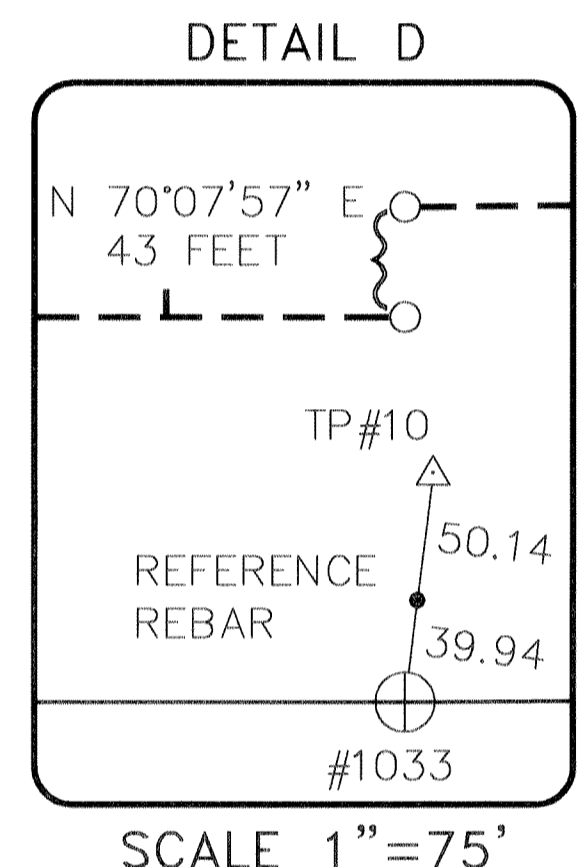
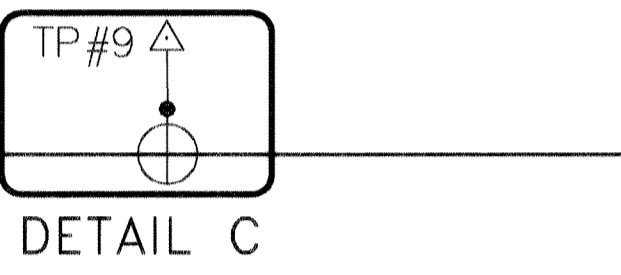
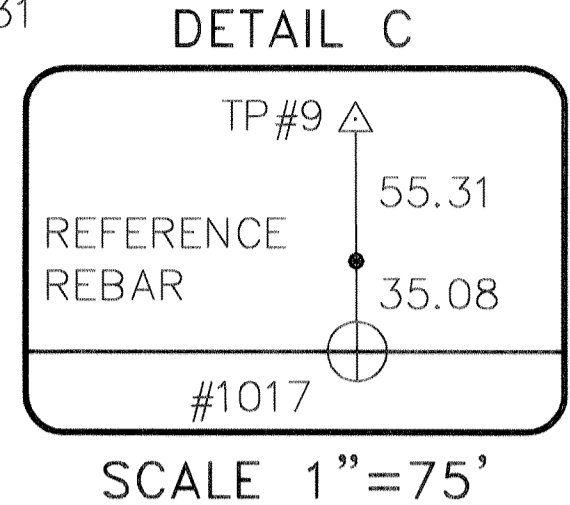
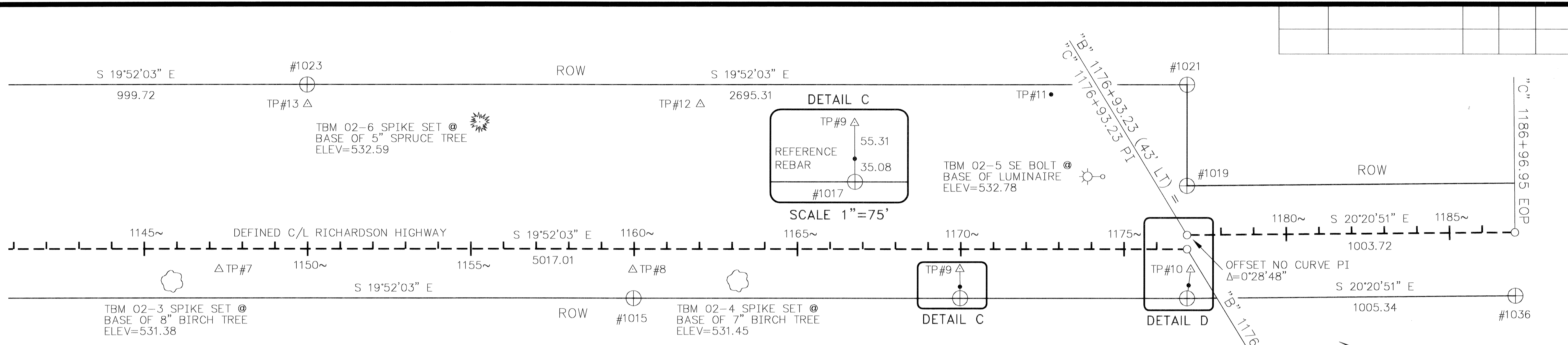
Fairbank 2004-134 DATE: 10/14/04

DATE OF SURVEY Beginning: November 16, 2002 Ending: January 10, 2003	NAME AND ADDRESS: Department of Transportation and Public Facilities (DOT&PF) 2301 Peger Road Fairbanks, Alaska 99709
--	---

**RECORD OF SURVEY**

CONTROL DRAWING OF  
RICHARDSON HIGHWAY MP 341 EIELSON ACCESS RAMP  
IM-0A2-4(25)/61718  
within  
SECTIONS 28, 33 & 34 TOWNSHIP 2 SOUTH, RANGE 3 EAST  
SECTION 3, TOWNSHIP 3 SOUTH, RANGE 3 EAST  
FAIRBANKS MERIDIAN, ALASKA  
FAIRBANKS RECORDING DISTRICT

DRAWN BY: REW	SCALE: 1"=150'	CHECKED BY: RSS/LSD	FILE NO.:
------------------	-------------------	------------------------	-----------



**LEGEND**

- REBAR SET
- △ PK NAIL SET
- ⊕ CONCRETE ROW MONUMENT RECOVERED
- ☼ TBM BIRCH TREE SET
- ☼ TBM SPRUCE TREE SET
- ☼ TBM LUMINAIRE SET
- C/L CONTROL NOT SET

**RECOVERED MONUMENT COORDINATE TABLE**

STATION	OFFSET	PT#	NORTHING	EASTING	DESCRIPTION
N/A	N/A	1029	3914259.68	1459995.13	CONCRETE ROW MONUMENT
N/A	N/A	1031	3914010.53	1459827.57	CONCRETE ROW MONUMENT
1108+40.77	149.72	1002	3913541.61	1460525.54	CONCRETE ROW MONUMENT
1109+83.17	149.90	1001	3913461.97	1460643.59	CONCRETE ROW MONUMENT
1114+69.38	150.06	1005	3913190.42	1461046.91	CONCRETE ROW MONUMENT
1116+99.70	149.68	1006	3913061.93	1461215.71	CONCRETE ROW MONUMENT
1126+75.84	-499.90	1027	3912549.63	1462330.87	CONCRETE ROW MONUMENT
1128+98.18	249.54	1010	3912085.73	1461701.63	CONCRETE ROW MONUMENT
1128+98.24	149.70	1009	3912119.60	1461795.55	CONCRETE ROW MONUMENT
1139+98.09	149.86	1013	3911085.15	1462169.18	CONCRETE ROW MONUMENT
1139+98.21	-499.81	1025	3911305.83	1462780.22	CONCRETE ROW MONUMENT
1149+97.93	-499.90	1023	3910365.65	1463120.06	CONCRETE ROW MONUMENT
1159+98.20	150.31	1015	3909203.94	1462848.48	CONCRETE ROW MONUMENT
1169+97.86	149.88	1017	3908263.92	1463188.61	CONCRETE ROW MONUMENT
1176+92.87	-192.71	1019	3907726.71	1463747.01	CONCRETE ROW MONUMENT
1176+93.15	-500.41	1021	3907831.01	1464036.49	CONCRETE ROW MONUMENT
1176+93.23	149.97	1033	3907609.91	1463424.85	CONCRETE ROW MONUMENT
N/A	N/A	1036	3906667.28	1463774.38	CONCRETE ROW MONUMENT

**TBM COORDINATE TABLE**

STATION	OFFSET	PT#	NORTHING	EASTING	ELEVATION	DESCRIPTION
1111+38	110	TBM 02-1	3913409	1460795	527.83	SPIKE IN SPRUCE TREE
1117+50	-646	TBM 02-8	3913619	1461786	526.12	SPIKE IN SPRUCE TREE
1129+75	111	TBM 02-2	3912061	1461858	530.07	SPIKE IN SPRUCE TREE
1137+96	-481	TBM 02-7	3911490	1462694	531.32	SPIKE IN SPRUCE TREE
1145+85	100	TBM 02-3	3910550	1462415	531.38	SPIKE IN BIRCH TREE
1155+26	-386	TBM 02-6	3909830	1463193	532.59	SPIKE IN SPRUCE TREE
1163+17	98	TBM 02-4	3908922	1463006	531.45	SPIKE IN BIRCH TREE
1174+35	-221	TBM 02-5	3907979	1463685	532.78	SE BOLT OF LUMINAIRE

**TRAVERSE POINT COORDINATE TABLE**

STATION	OFFSET	PT#	NORTHING	EASTING	DESCRIPTION
N/A	N/A	1	3914083.33	1459874.26	PK NAIL SET
1109+84.10	61.18	2	3913535.06	1460693.89	PK NAIL SET
1110+74.15	-62.43	17	3913587.34	1460837.60	PK NAIL SET
1116+95.18	62.96	3	3913130.40	1461269.09	PK NAIL SET
1117+40.19	-758.35	16	3913711.48	1461851.87	PK NAIL SET
1122+95.37	61.34	4	3912690.38	1461644.31	PK NAIL SET
1126+61.71	-441.35	15	3912546.05	1462269.84	PK NAIL SET
1128+94.27	61.38	5	3912153.35	1461877.26	PK NAIL SET
1138+16.29	-405.92	14	3911445.01	1462630.10	PK NAIL SET
1139+61.14	60.45	6	3911150.30	1462240.71	PK NAIL SET
1147+28.56	60.77	7	3910428.44	1462501.21	PK NAIL SET
1149+99.35	-441.54	13	3910344.48	1463065.65	PK NAIL SET
1159+95.60	61.65	8	3909236.52	1462930.98	PK NAIL SET
1162+02.34	-442.12	12	3909213.28	1463475.02	PK NAIL SET
1169+97.17	59.49	9	3908295.29	1463273.39	PK NAIL SET
1172+76.40	-470.63	11	3908212.84	1463866.85	REBAR SET
N/A	N/A	10	3907630.02	1463512.66	PK NAIL SET

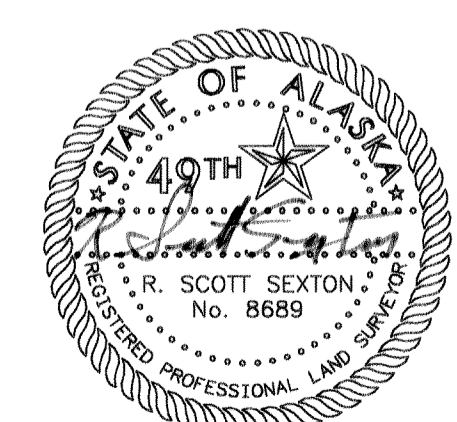
**DEFINED "B" CENTERLINE**

STATION	OFFSET	NORTHING	EASTING	DESCRIPTION
1100+00.00	0.00	3914135.16	1459911.54	BOP
1114+69.57	0.00	3913314.82	1461130.83	PC 1
1126+76.22	0.00	3912379.28	1461860.89	PT 1
1126+76.22	1909.86	3911730.23	1460064.71	RP 1
1176+93.23	0.00	3907660.87	1463565.89	POT
"C" 1176+93.23	-43.00	3907675.49	1463606.33	PI

**DEFINED "C" CENTERLINE**

STATION	OFFSET	NORTHING	EASTING	DESCRIPTION
1176+93.23	0.00	3907675.49	1463606.33	PI
1186+96.95	0.00	3906734.39	1463955.34	EOP

2004-134  
 Fairbanks REC DIST  
 DATE: 10-19-2004  
 TIME: 12:41 P.M.  
 Requested by: AS DOT  
 Address:



DATE OF SURVEY Beginning: November 16, 2002 Ending: January 10, 2003	NAME AND ADDRESS: Department of Transportation and Public Facilities (DOT&PF) 2301 Peger Road Fairbanks, Alaska 99709
--	---

**RECORD OF SURVEY**  
 CONTROL DRAWING OF  
 RICHARDSON HIGHWAY MP 341 EIELSON ACCESS RAMP  
 IM-0A2-4(25)/61718  
 within  
 SECTIONS 28, 33 & 34 TOWNSHIP 2 SOUTH, RANGE 3 EAST  
 SECTION 3, TOWNSHIP 3 SOUTH, RANGE 3 EAST  
 FAIRBANKS MERIDIAN, ALASKA  
 FAIRBANKS RECORDING DISTRICT

DRAWN BY: REW	SCALE: 1"=150'	CHECKED BY: RSS/LSD	FILE NO.:
------------------	-------------------	------------------------	-----------