

# TOWNSHIP 2 SOUTH, RANGE 3 EAST, OF THE FAIRBANKS MERIDIAN, ALASKA

## HISTORY OF SURVEYS

E. C. QUERIN EXECUTED SURVEYS OF A PORTION OF THE SOUTH AND WEST BOUNDARIES OF THE TOWNSHIP IN JULY, 1920.  
 LEONARD M. BERLIN EXECUTED A SURVEY OF THE SOUTH BOUNDARY OF SECTION 32 IN JULY, 1934.  
 LLOYD E. TOLAND EXECUTED SURVEYS OF THE SOUTH BOUNDARY OF SECTION 33 AND THE SUBDIVISION OF SECTIONS 27 AND 34 IN 1949 AND 1951 UNDER SPECIAL INSTRUCTIONS DATED APRIL 27, 1934, FOR GROUP 49 ALASKA.

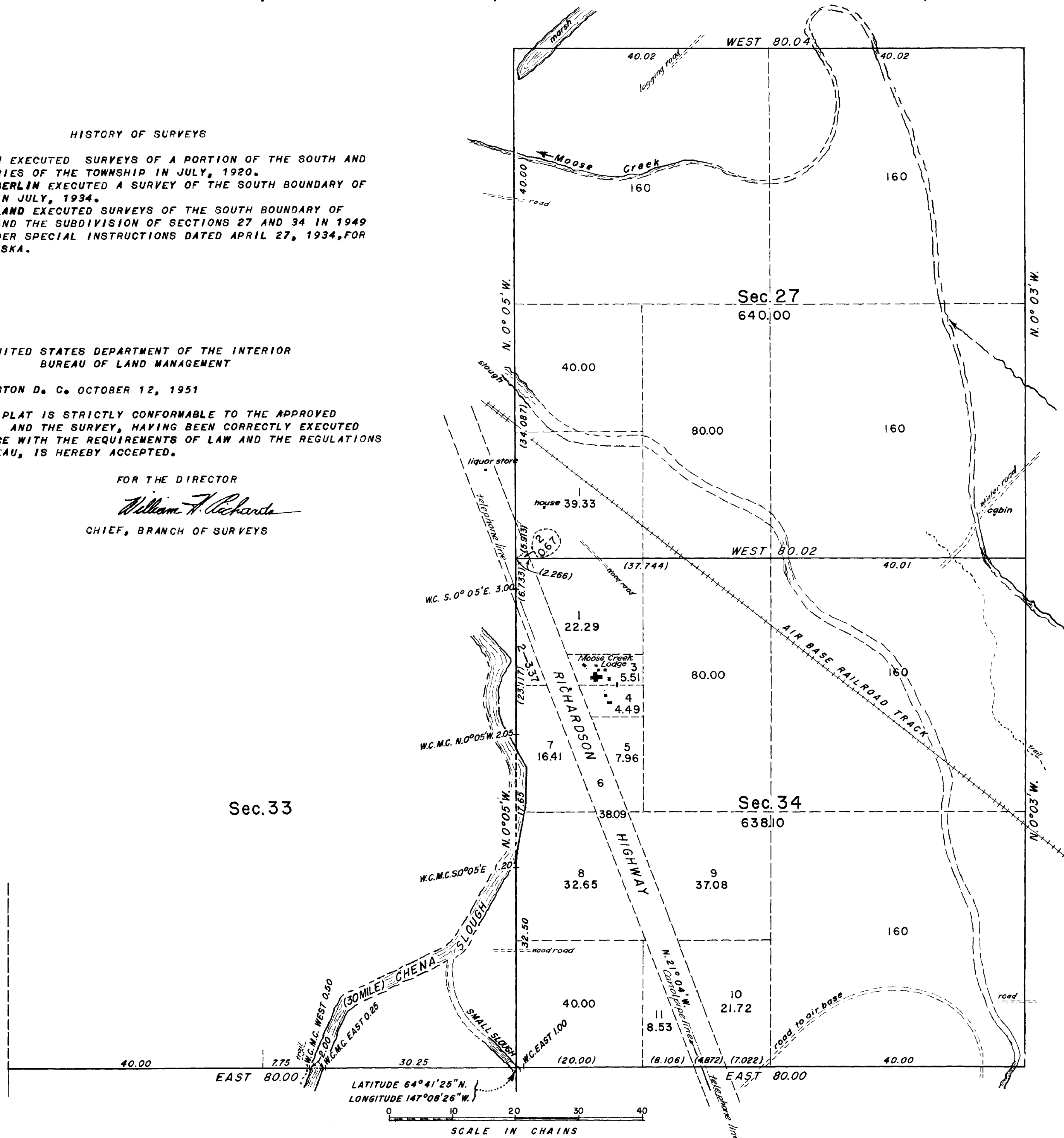
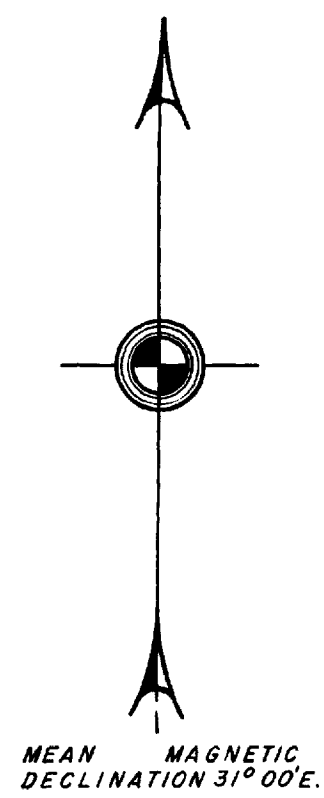
UNITED STATES DEPARTMENT OF THE INTERIOR  
 BUREAU OF LAND MANAGEMENT

WASHINGTON D. C. OCTOBER 12, 1951

THIS PLAT IS STRICTLY CONFORMABLE TO THE APPROVED FIELD NOTES, AND THE SURVEY, HAVING BEEN CORRECTLY EXECUTED IN ACCORDANCE WITH THE REQUIREMENTS OF LAW AND THE REGULATIONS OF THIS BUREAU, IS HEREBY ACCEPTED.

FOR THE DIRECTOR

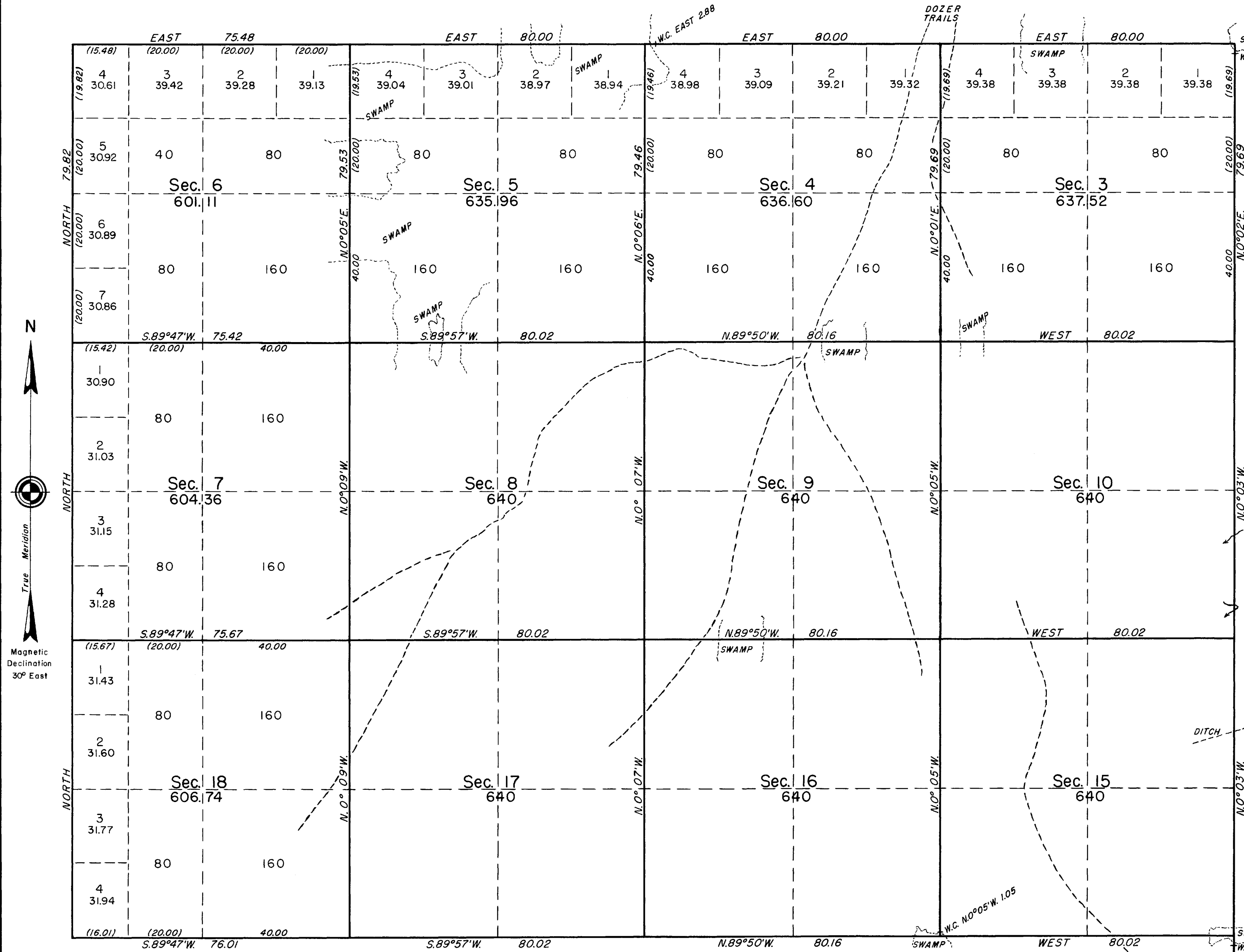
*William F. Richards*  
 CHIEF, BRANCH OF SURVEYS



WCP

R.S.C.  
 E.A.H.  
 6435

TOWNSHIP 2 SOUTH, RANGE 3 EAST, OF THE FAIRBANKS MERIDIAN, ALASKA.



Survey of the west boundary and a portion of the south boundary of the township, and of previously surveyed subdivisional lines, was executed by E. C. Guerin, L. M. Berlin, Lloyd E. Toland, and Gordon W. Webber. The lines surveyed by each are as shown on the township plats accepted October 8, 1921, May 19, 1922, April 30, 1936, October 12, 1951, December 3, 1951, and June 13, 1955.

Survey of a portion of the north boundary and of lines continuing the subdivision of the township, executed by Gordon W. Webber, June 20 to July 30, 1955, under special instructions for Group No. 49, Alaska, dated April 27, 1934.

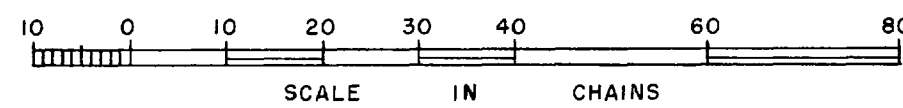
UNITED STATES DEPARTMENT OF THE INTERIOR  
BUREAU OF LAND MANAGEMENT  
Washington, D. C. May 28, 1958

This plat is strictly conformable to the approved field notes, and the survey, having been correctly executed in accordance with the requirements of law and the regulations of this Bureau, is hereby accepted.

For the Director

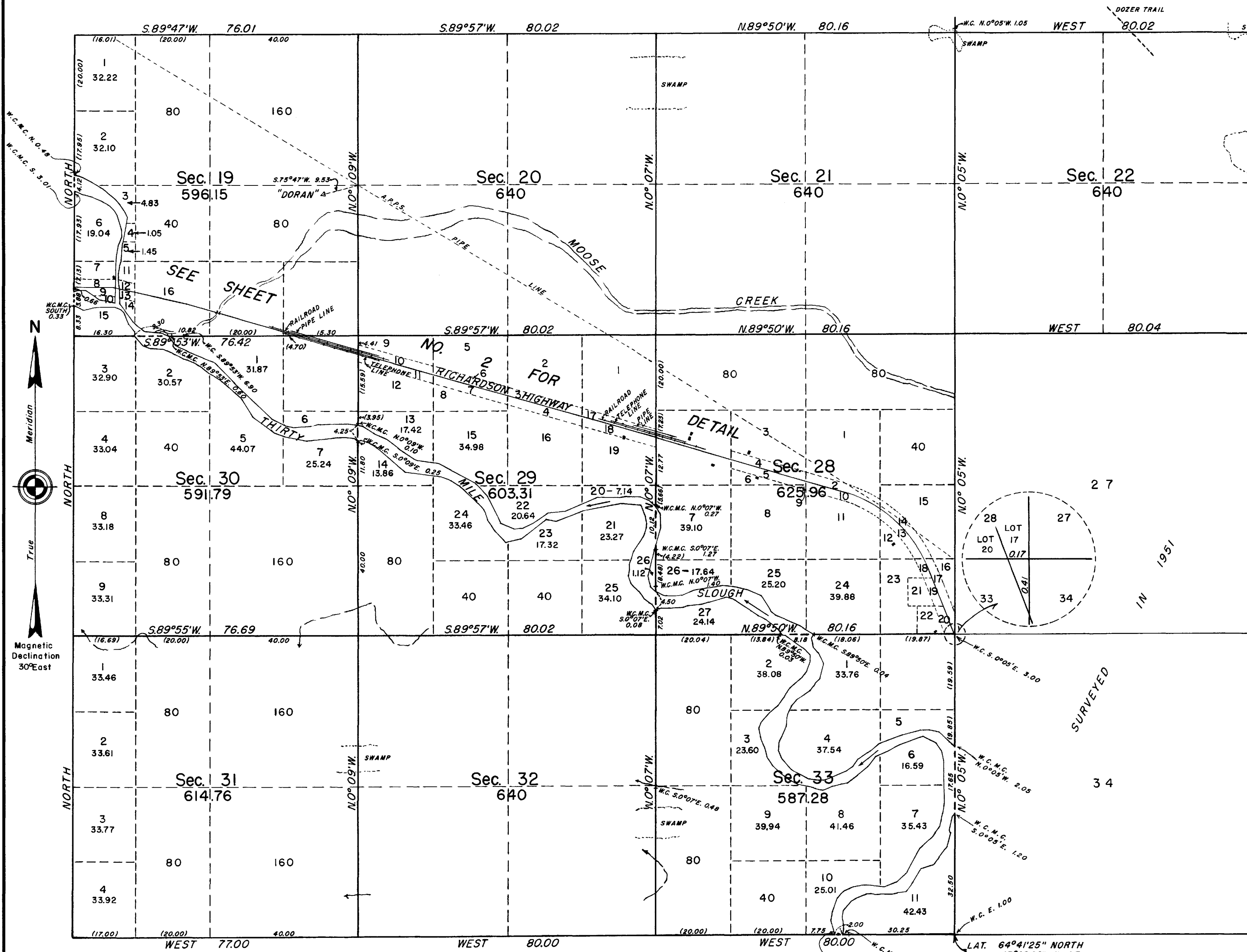
*Dwight Clement*

Acting Cadastral Engineering Staff Officer



Area Surveyed: 7,562.29 Acres

TOWNSHIP 2 SOUTH, RANGE 3 EAST, OF THE FAIRBANKS MERIDIAN, ALASKA.



Survey of the west boundary and a portion of the south boundary of the township, and of previously surveyed subdivisional lines, was executed by E. C. Guerin, L. M. Berlin, Lloyd E. Toland, and Gordon W. Webber. The lines surveyed by each are as shown on the township plats accepted October 8, 1921, May 19, 1922, April 30, 1936, October 12, 1951, December 3, 1951, and June 13, 1955.

Survey of a portion of the north boundary and of lines continuing the subdivision of the township, executed by Gordon W. Webber, June 20 to July 30, 1955, under special instructions for Group 49, Alaska, dated April 27, 1934.

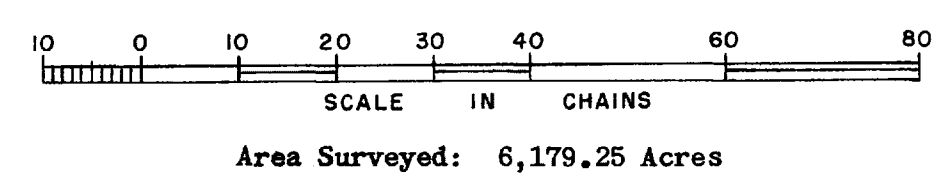
Lot lines along center line of Richardson Highway are parallel to and 150 feet distant from the center line.

UNITED STATES DEPARTMENT OF THE INTERIOR  
BUREAU OF LAND MANAGEMENT  
Washington, D. C. May 28, 1958

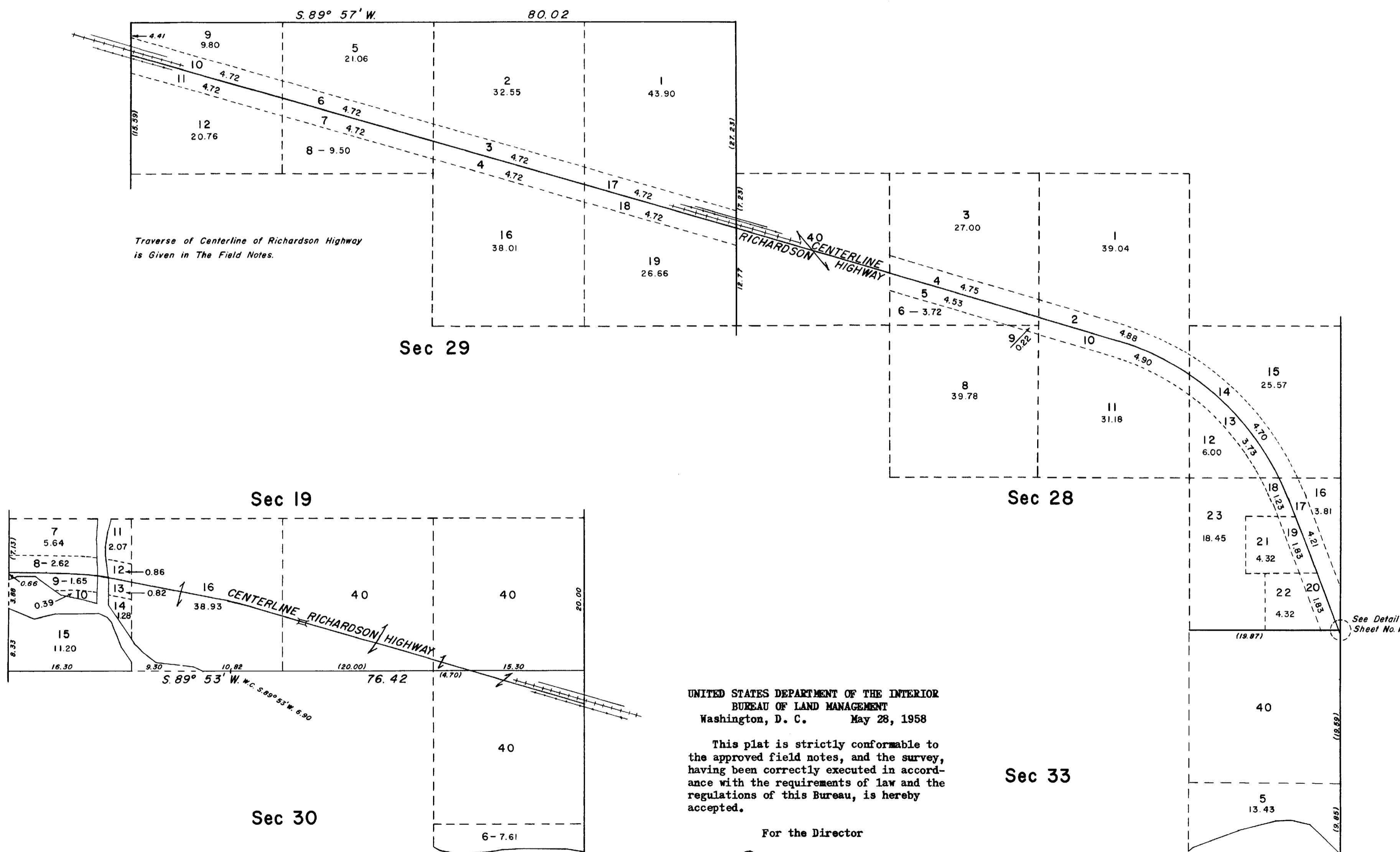
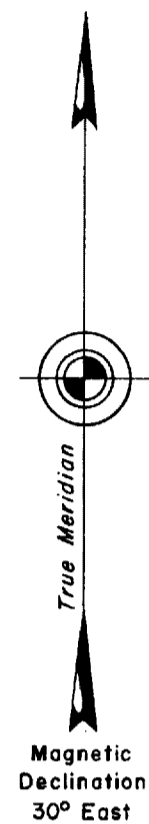
This plat is strictly conformable to the approved field notes, and the survey, having been correctly executed in accordance with the requirements of law and the regulations of this Bureau, is hereby accepted.

For the Director  
*[Signature]*  
Acting Cadastral Engineering Staff Officer

NOTE: SEE SHEET NO. 2 FOR LOT NUMBERS AND AREAS ALONG HIGHWAY EASEMENT.



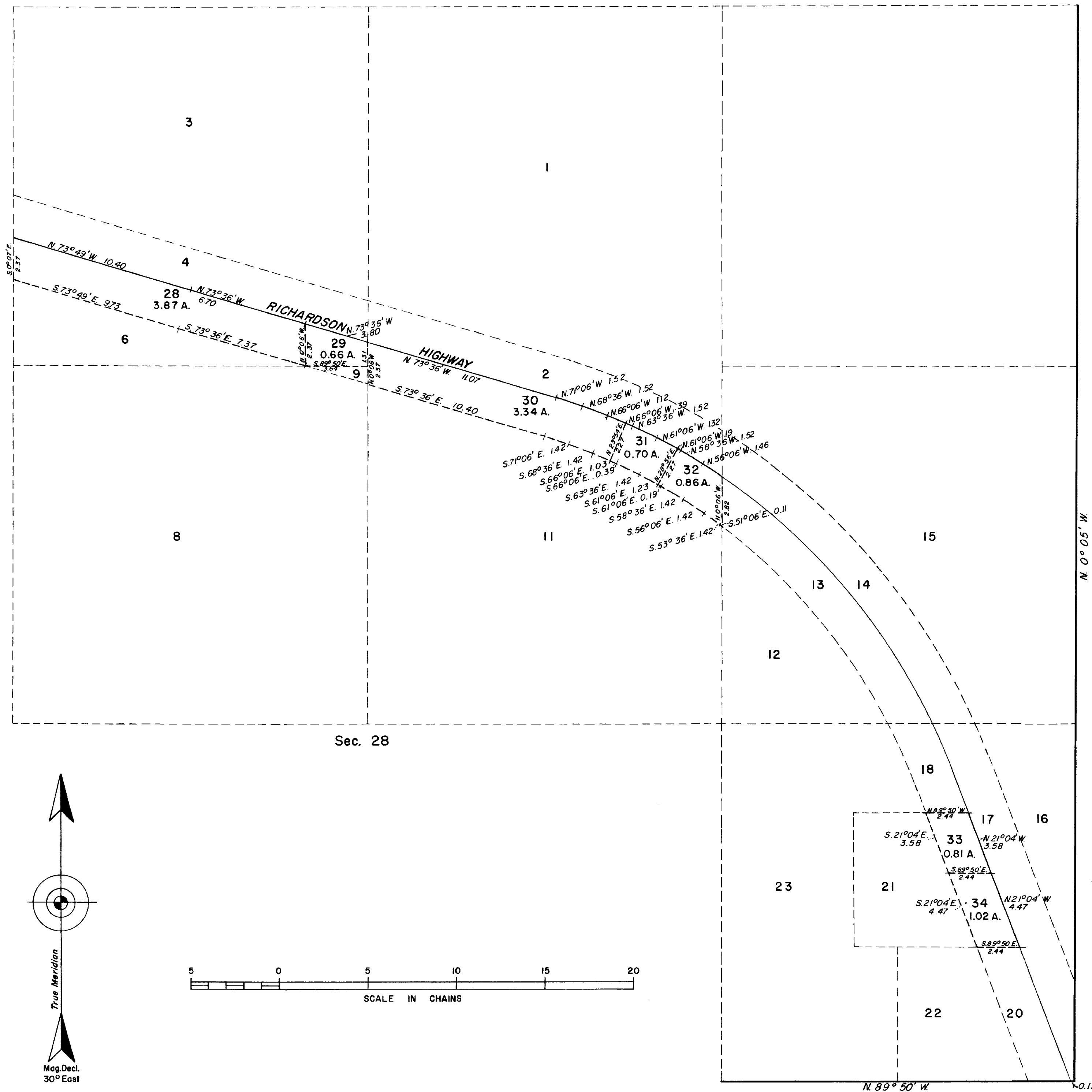
TOWNSHIP 2 SOUTH, RANGE 3 EAST, OF THE FAIRBANKS MERIDIAN, ALASKA.  
DETAIL OF LOTTING



P.H.

TOWNSHIP 2 SOUTH, RANGE 3 EAST, OF THE FAIRBANKS MERIDIAN, ALASKA

SUPPLEMENTAL PLAT OF SEC. 28



This supplemental plat of a portion of section 28, T. 2 S., R. 3 E., Fairbanks Meridian, Alaska, showing amended lottings for the areas formerly designated as lots 5, 10, and 19, into new lots 28, 29, 30, 31, 32, 33 and 34, is based upon the township plats accepted October 12, 1951 and May 28, 1958.

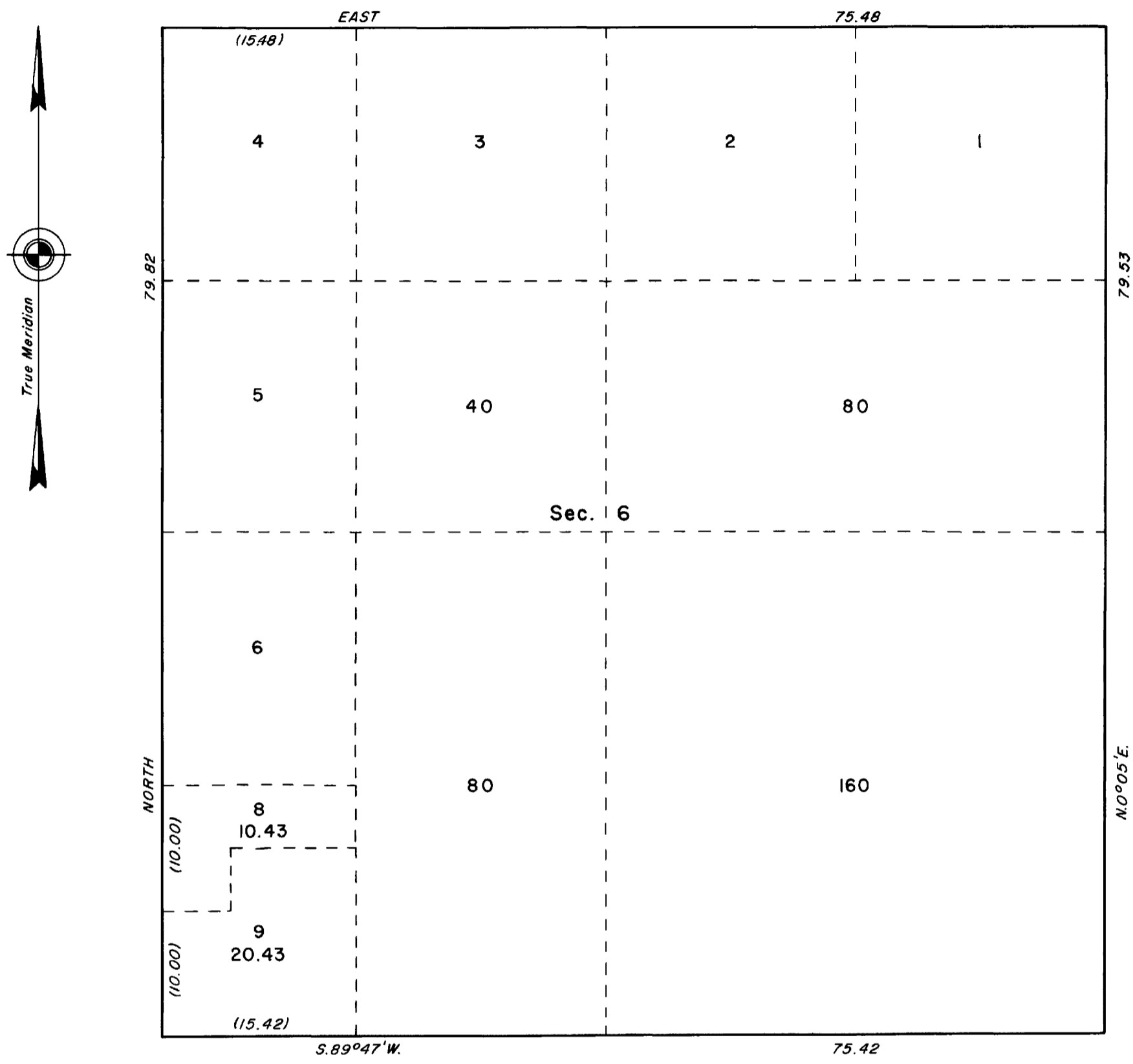
UNITED STATES DEPARTMENT OF THE INTERIOR  
BUREAU OF LAND MANAGEMENT  
Washington, D.C. January 30, 1962

This plat, showing amended lottings, is based upon the official records, and having been correctly prepared in accordance with the regulations, is hereby accepted.

For the Director

Chief, Division of Engineering

TOWNSHIP 2 SOUTH, RANGE 3 EAST, OF THE FAIRBANKS MERIDIAN, ALASKA  
SUPPLEMENTAL PLAT OF SECTION 6



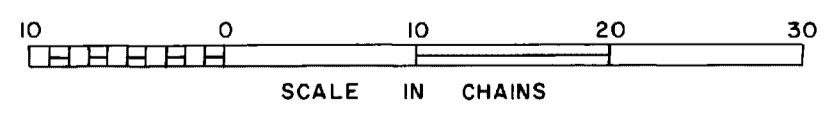
This supplemental plat was prepared to show the subdivision of original Lot 7 into Lots 8 and 9, and is based entirely upon the official plat accepted May 28, 1958.

UNITED STATES DEPARTMENT OF THE INTERIOR  
BUREAU OF LAND MANAGEMENT  
Washington, D. C. May 11, 1967

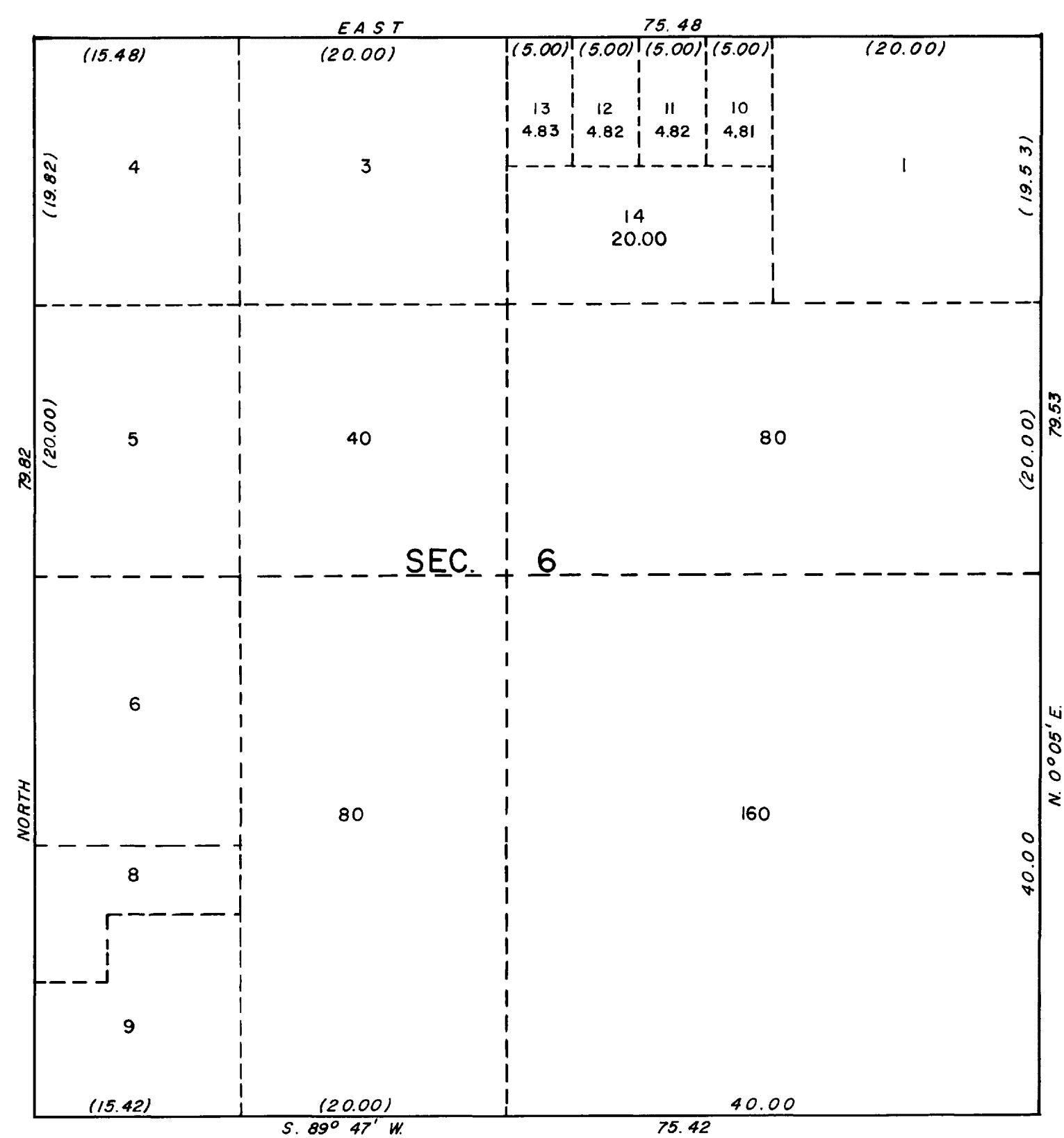
This plat, showing amended lottings, is based upon the official records, and having been correctly prepared in accordance with the regulations, is hereby accepted.

For the Director

*E. A. Remington*  
Chief, Division of Engineering



TOWNSHIP 2 SOUTH, RANGE 3 EAST, OF THE FAIRBANKS MERIDIAN, ALASKA  
 SUPPLEMENTAL PLAT OF SECTION 6



This plat shows a subdivision of original lot 2, section 6, and is based upon the plat accepted May 28, 1958, and supplemental plat of section 6, accepted May 11, 1967.

UNITED STATES DEPARTMENT OF THE INTERIOR  
 BUREAU OF LAND MANAGEMENT  
 Washington, D. C. August 22, 1968

This plat, showing amended lottings, is based upon the official records, and having been correctly prepared in accordance with the regulations, is hereby accepted.

For the Director

*R. L. Braun*

Chief, Division of Engineering

