

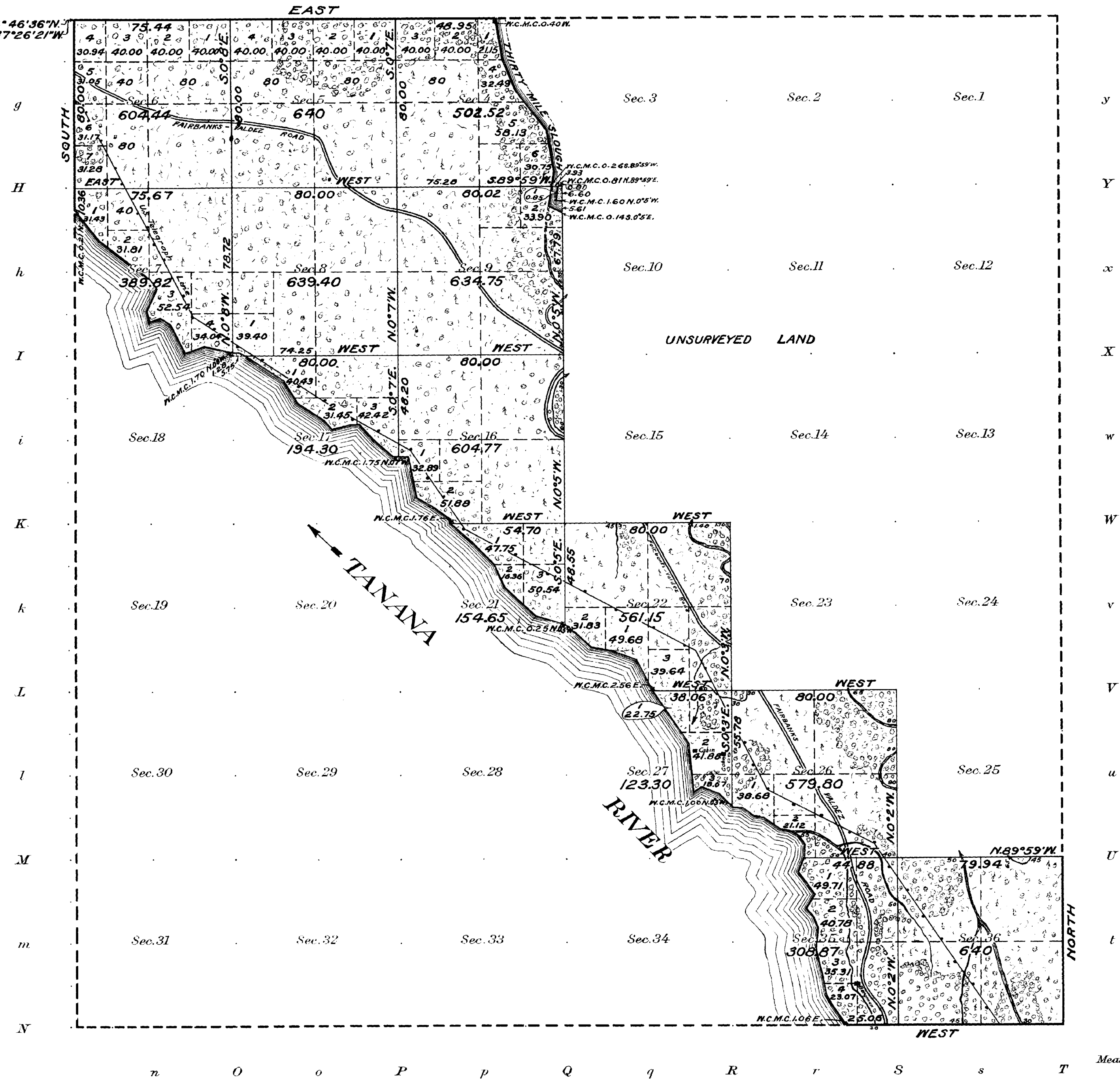
(4-675 a)

ORIGINAL  
Accepted October 8, 1921

# Township No 2 South, Range No 2 East of the Fairbanks Meridian, Alaska.

G f F e E d D c C b B a A

Lat. 64° 46' 36" N.  
Long. 147° 26' 21" W.



Areas in Acres	
Public Land	6577.77
Indian Reservation	
Indian Allotments	
Mineral Claims	
Water Surface	5.85
<b>Total Area</b>	<b>6583.62</b>

Scale 40 Chains to an inch  
Mean Magnetic Declination

Surveys Designated	By Whom Surveyed	Group			Amount of Surveys		When Surveyed	
		No.	Date	Mls.	chs.	ks.	Begun	Completed
North Boundary	E.C. Guerin, U.S.S.	16	June 5, 1920	2	44	39	July 9, 1920	July 30, 1920
West	"	"	"	1	10	36	July 10, "	July 10, "
East	"	"	"	1	00	00	July 20, "	July 20, "
South	"	"	"	1	25	06	July 19, "	July 19, "
Subdivisional Lines	"	"	"	20	45	80	July 10, "	Aug. 2, "
Meanders	"	"	"	3	06	99	July 23, "	Aug. 6, "

The above map of Township No. 2 South Range No. 2 East of the Fairbanks Meridian Alaska is strictly conformable to the field notes of the survey thereof on file in this office, which have been examined and approved.

U. S. Surveyor General's Office.  
Juneau, Alaska, June 4, 1921.

*H. J. Dammann*  
Surveyor General.

Check L.P.K.  
Calc. & Plat. F.D.

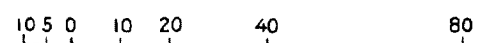
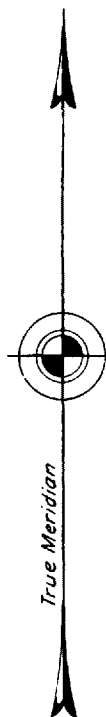
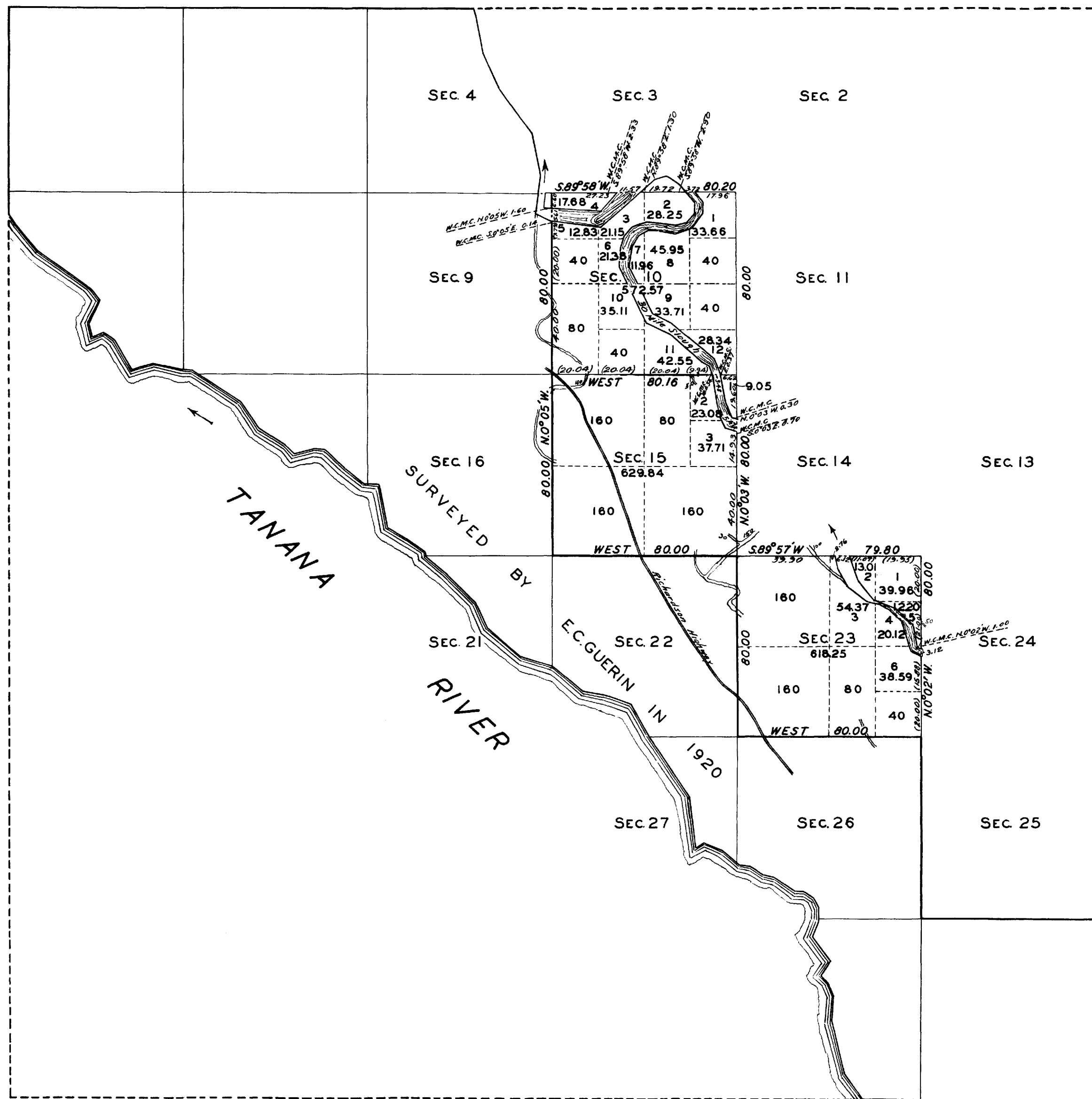
(4-675b)

ORIGINAL

TOWNSHIP NO 2 SOUTH RANGE NO 2 EAST

FAIRBANKS MERIDIAN

ALASKA



Mean Magnetic Declination, **31° EAST** Scale: 40 Chains to an Inch. Area Surveyed, **1820.66** Acres.

LINES DESIGNATED	BY WHOM SURVEYED	NO	GROUP DATE	MILEAGE MLS.	CHS.	WHEN SURVEYED BEGUN	COMPLETED
Exterior							
Subdivisional	CHAS. P. SEELYE, U.S.T.	45	APRIL 12, 1932	6	0.16	MAY 23 1933	JUNE 25 1932
Meander	"	"	"	6	33.30	"	"
Miscellaneous							

Office of U.S. Supervisor of Surveys  
 Denver, Colorado, Dec. 7, 1933  
 The above plat of Township No. 2 SOUTH Range No. 2 EAST  
 of the FAIRBANKS Meridian, ALASKA  
 is strictly conformable to the field notes of the survey  
 thereof which have been examined and approved.

*Wm. H. Dimon*  
 U.S. Supervisor of Surveys.

DEPARTMENT OF THE INTERIOR  
 GENERAL LAND OFFICE

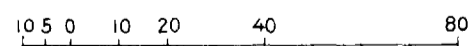
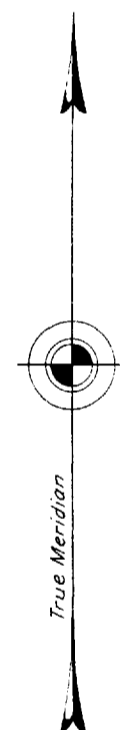
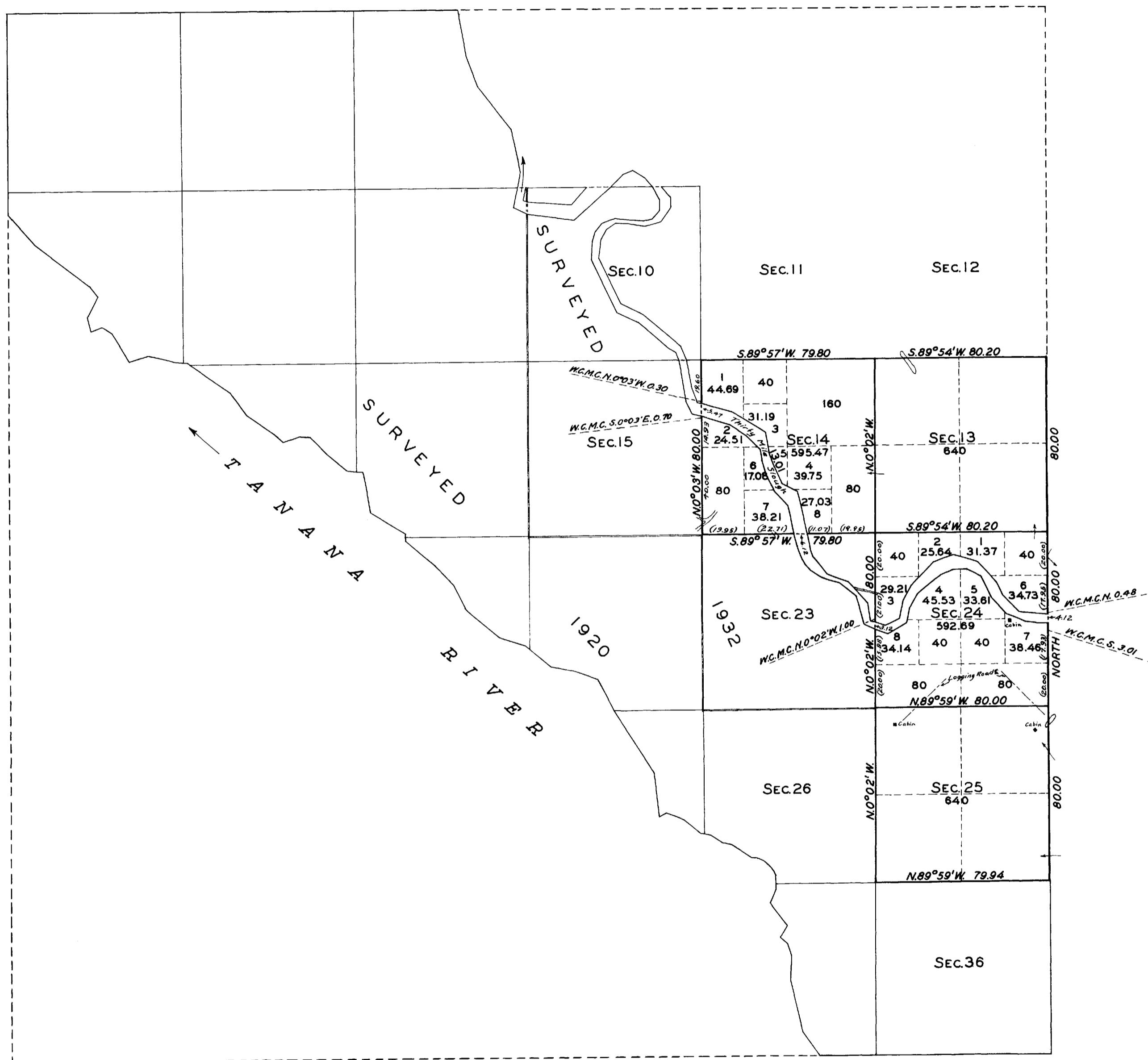
Washington, D.C., April 23, 1934.  
 The survey represented by this plat  
 having been correctly executed in accordance  
 with the requirements of law and the regulations  
 of this office, is hereby accepted.

*D. H. Canfield*  
 Acting Assistant Commissioner.

*RWS*  
*6/30*

# TOWNSHIP N<sup>o</sup> 2 SOUTH, RANGE N<sup>o</sup> 2 EAST OF THE FAIRBANKS MERIDIAN, ALASKA

LAT. 64° 46' 36" N.  
LONG. 147° 26' 21" W.



Mean Magnetic Declination, 31° 00' E. Scale: 40 Chains to an Inch. Area Surveyed, 2,468.16 Acres.

LINES DESIGNATED	BY WHOM SURVEYED	GROUP NO	DATE	MILEAGE		WHEN SURVEYED	
				MLS.	CHS.	BEGUN	COMPLETED
Exterior	L.M. BERLIN, U.S.T.	49	APRIL 27, 1934	3	0.00	JUNE 21, 1934	JULY 5, 1934
Subdivisional	"			5	0.20		
Meander	"			4	57.58		
Miscellaneous							

Office of U.S. Supervisor of Surveys  
 Denver, Colorado, March 3, 1936.  
 The above plat of Township No. 2 SOUTH, Range No. 2 EAST  
 of the FAIRBANKS Meridian, ALASKA  
 is strictly conformable to the field notes of the survey  
 thereof which have been examined and approved.

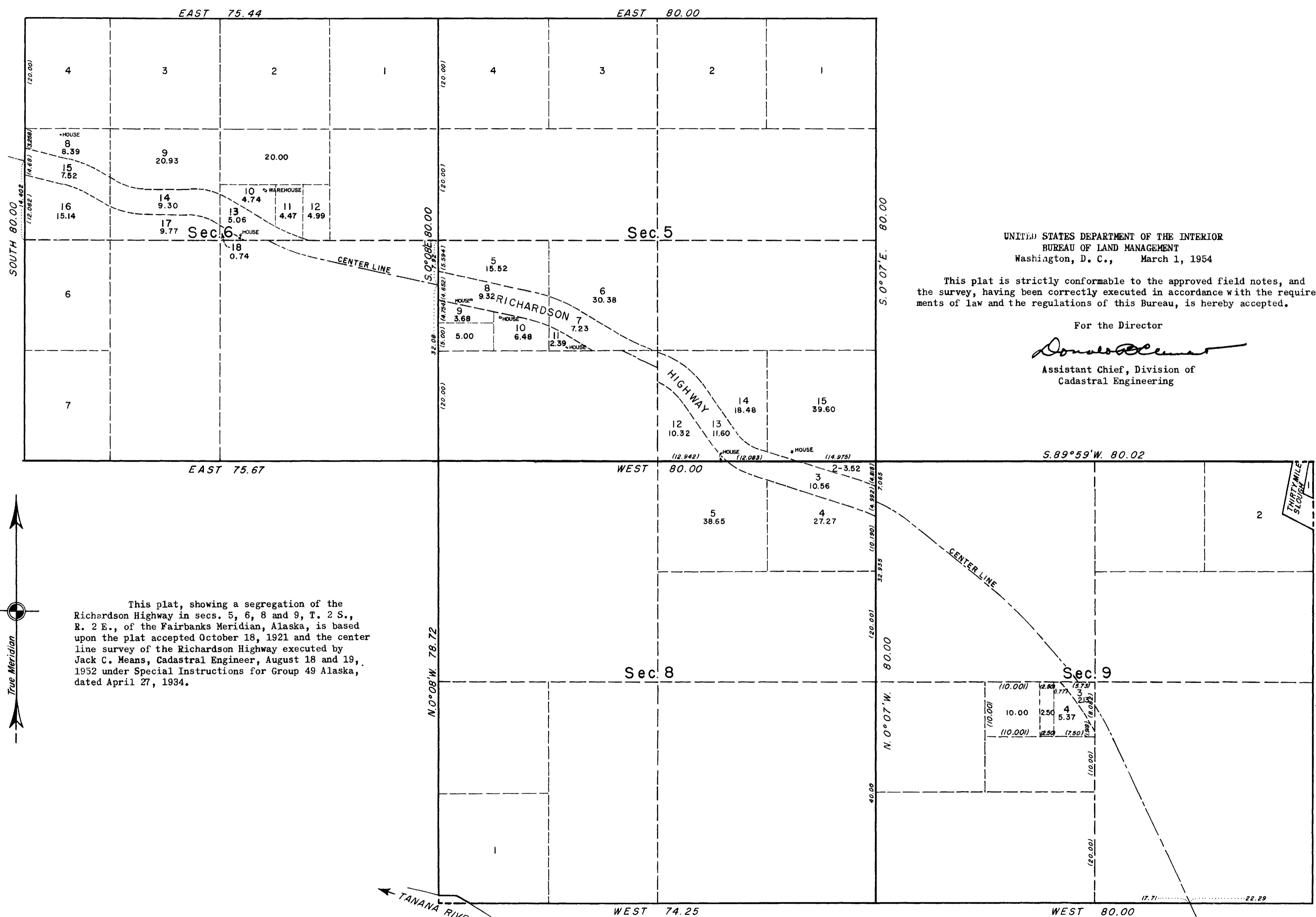
*[Signature]*  
 U.S. Supervisor of Surveys.

DEPARTMENT OF THE INTERIOR  
 GENERAL LAND OFFICE  
 Washington, D.C., April 30, 1936.  
 The survey represented by this plat  
 having been correctly executed in accordance  
 with the requirements of law and the regulations  
 of this office, is hereby accepted.

*[Signature]*  
 Assistant Commissioner.

*[Handwritten initials]*

TOWNSHIP 2 SOUTH, RANGE 2 EAST, OF THE FAIRBANKS MERIDIAN, ALASKA  
SEGREGATION OF THE RICHARDSON HIGHWAY RIGHT OF WAY



UNITED STATES DEPARTMENT OF THE INTERIOR  
BUREAU OF LAND MANAGEMENT  
Washington, D. C., March 1, 1954

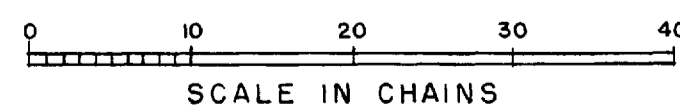
This plat is strictly conformable to the approved field notes, and the survey, having been correctly executed in accordance with the requirements of law and the regulations of this Bureau, is hereby accepted.

For the Director

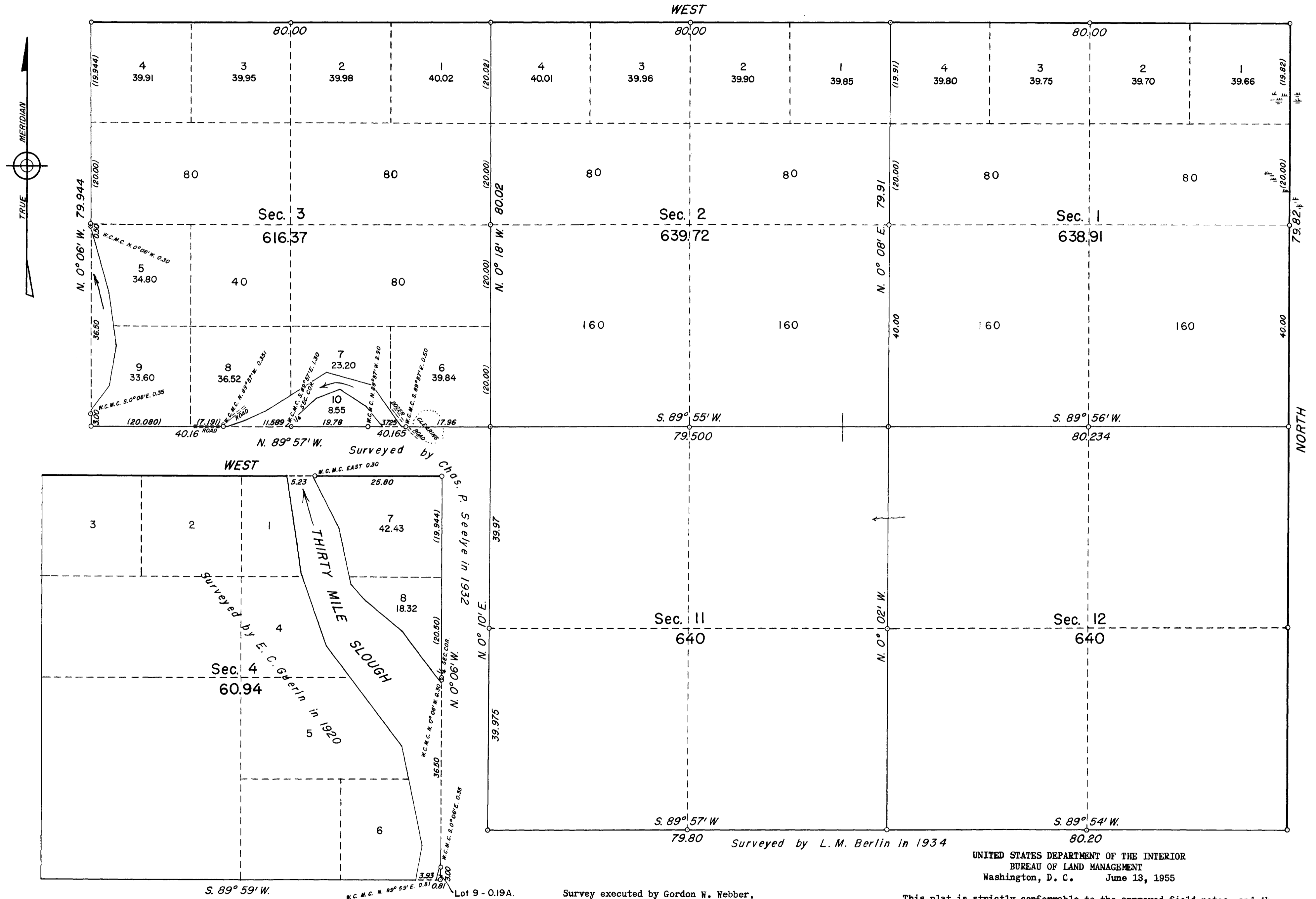
*Donald C. ...*

Assistant Chief, Division of  
Cadastral Engineering

This plat, showing a segregation of the Richardson Highway in secs. 5, 6, 8 and 9, T. 2 S., R. 2 E., of the Fairbanks Meridian, Alaska, is based upon the plat accepted October 18, 1921 and the center line survey of the Richardson Highway executed by Jack C. Means, Cadastral Engineer, August 18 and 19, 1952 under Special Instructions for Group 49 Alaska, dated April 27, 1934.



TOWNSHIP 2 SOUTH, RANGE 2 EAST, OF THE FAIRBANKS MERIDIAN, ALASKA



o indicates an iron post. Area Surveyed, 3235.94 acres

SCALE IN CHAINS

0 10 20 30 40 50 60 70

Survey executed by Gordon W. Webber, June 2 to 15, 1954 under special instructions dated April 27, 1934 for Group 49, Alaska

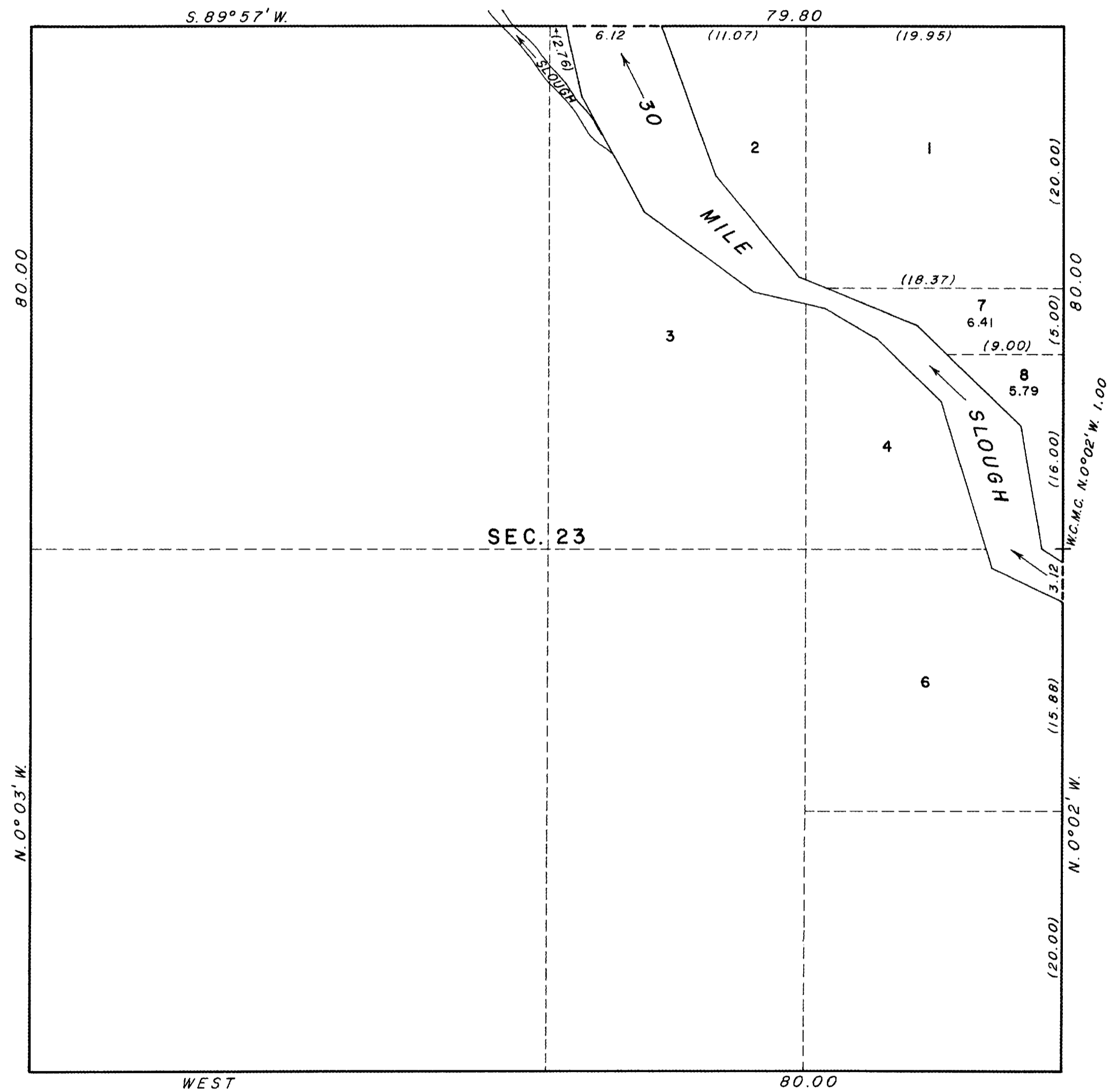
Surveyed by L. M. Berlin in 1934

UNITED STATES DEPARTMENT OF THE INTERIOR  
BUREAU OF LAND MANAGEMENT  
Washington, D. C. June 13, 1955

This plat is strictly conformable to the approved field notes, and the survey, having been correctly executed in accordance with the requirements of law and the regulations of this Bureau, is hereby accepted.

For the Director  
*Donald B. Clement*  
Acting Cadastral Engineering Staff Officer

TOWNSHIP 2 SOUTH, RANGE 2 EAST FAIRBANKS MERIDIAN, ALASKA  
SUPPLEMENTAL PLAT

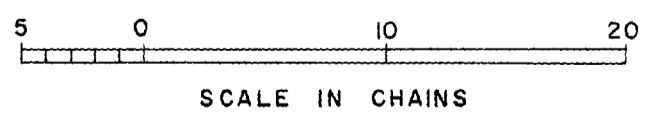


This supplemental plat of Section 23, Township 2 South, Range 2 East, Fairbanks Meridian, Alaska, shows subdivision of original lot 5, based upon the township plat approved December 7, 1933 and accepted April 23, 1934.

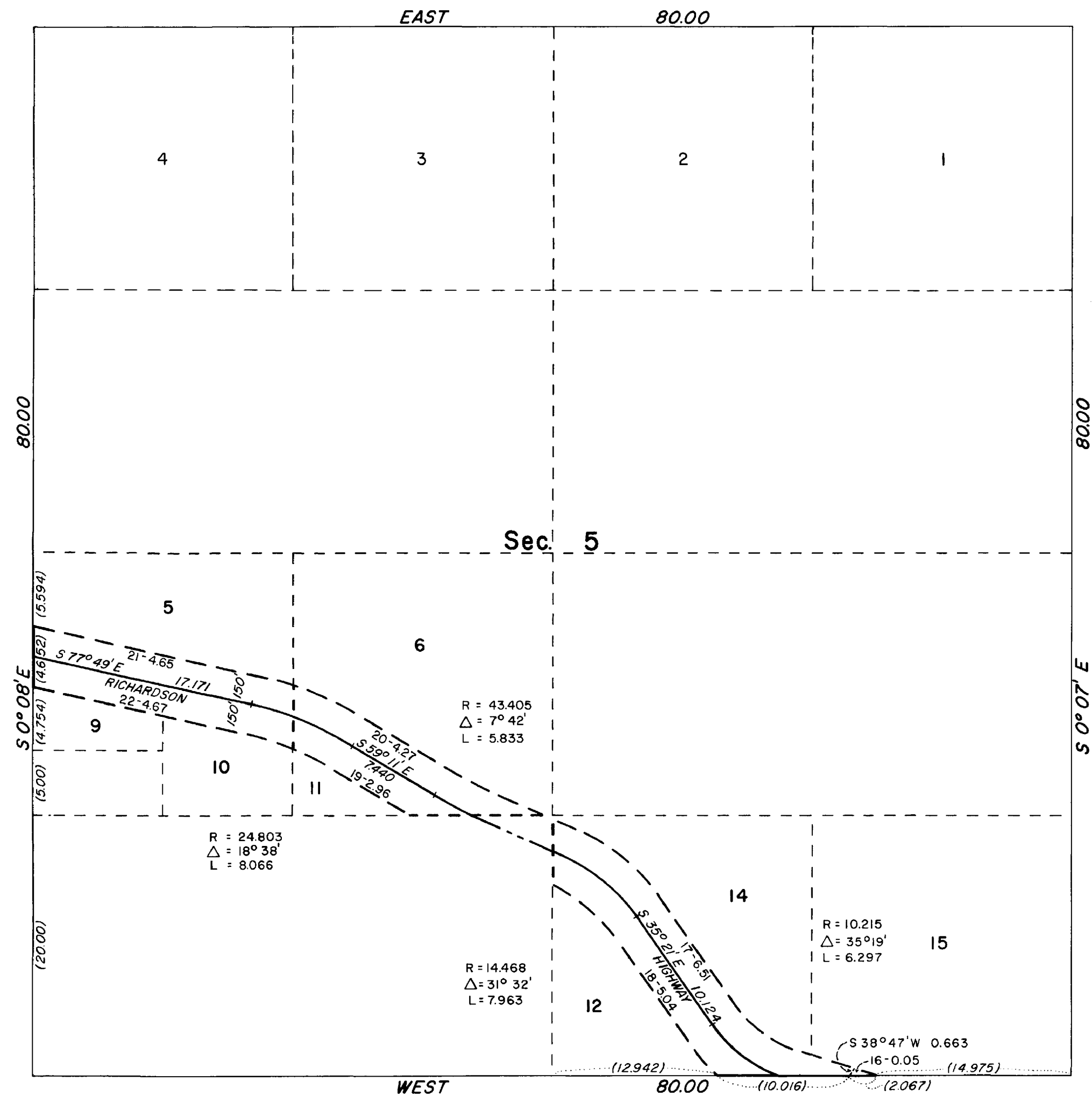
UNITED STATES DEPARTMENT OF THE INTERIOR  
BUREAU OF LAND MANAGEMENT  
Washington, D. C. July 16, 1959

This plat, showing amended lottings, is based upon the official records, and having been correctly prepared in accordance with the regulations, is hereby accepted.

For the Director  
*Carl G. Harrington*  
Cadastral Engineering Staff Officer



TOWNSHIP 2 SOUTH, RANGE 2 EAST, OF THE FAIRBANKS MERIDIAN, ALASKA  
 SUPPLEMENTAL PLAT OF SECTION 5



This plat shows amended lottings for the area formerly designated as lots 7, 8, and 13, and is based upon the township plat accepted October 8, 1921, and the highway segregation plat accepted March 1, 1954.

Curve data, as shown hereon, pertains to the center line of the Richardson Highway.

UNITED STATES DEPARTMENT OF THE INTERIOR  
 BUREAU OF LAND MANAGEMENT  
 Washington, D. C. August 25, 1964

This plat, showing amended lottings, is based upon the official records, and having been correctly prepared in accordance with the regulations, is hereby accepted.

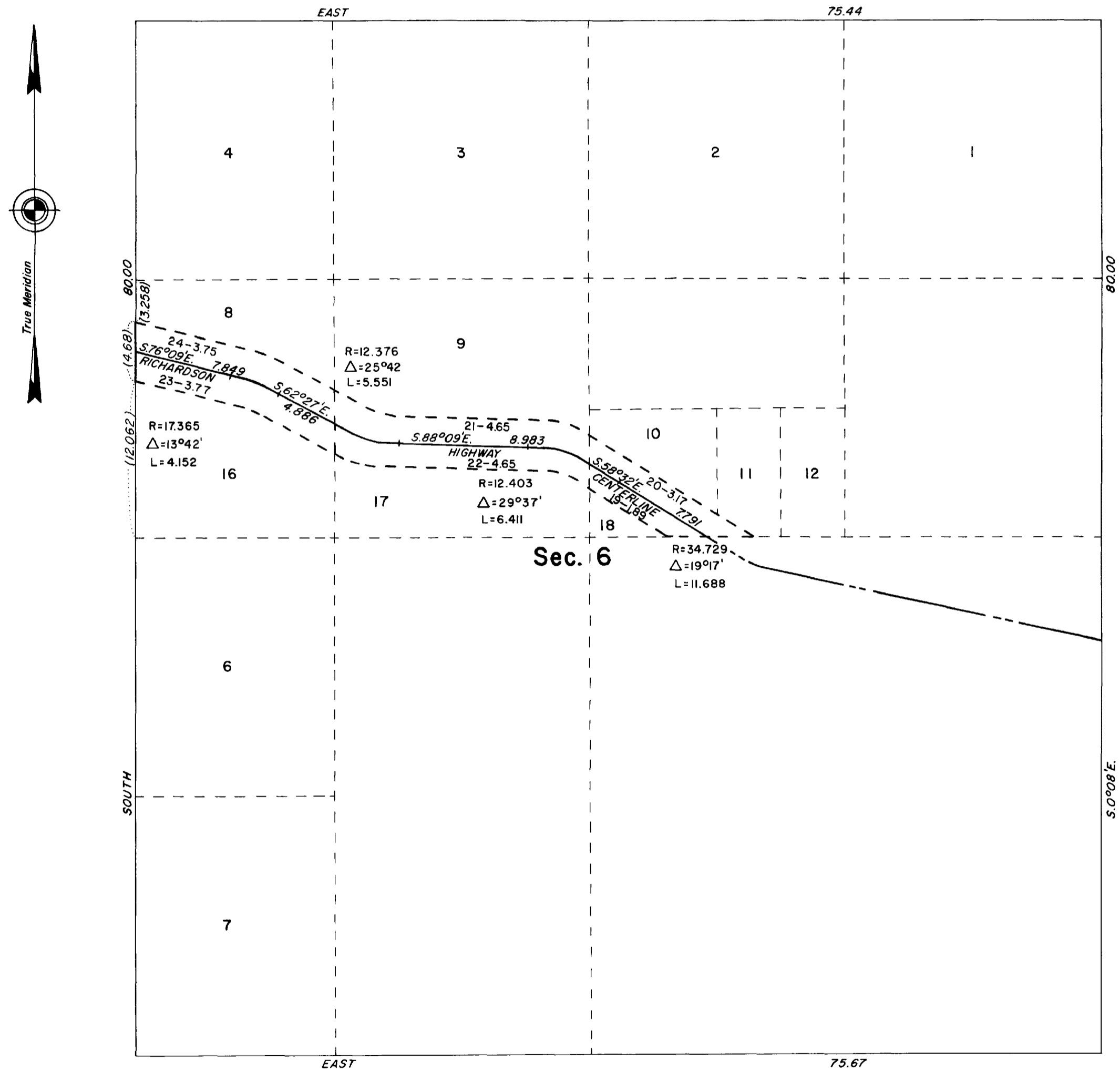
For the Director

*E. J. Hennington*  
 Chief, Division of Engineering

TOWNSHIP 2 SOUTH, RANGE 2 EAST, OF THE FAIRBANKS MERIDIAN, ALASKA  
SUPPLEMENTAL PLAT OF SECTION 6

This plat shows amended lottings of the area formerly designated as lots 13, 14, and 15, and is based upon the township plat accepted October 8, 1921, and the highway segregation plat accepted March 1, 1954.

Curve data, as shown hereon, pertains to the center line of the Richardson Highway.

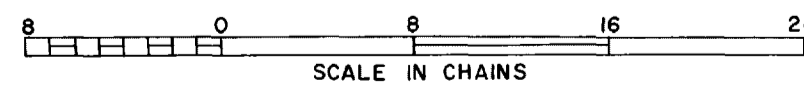


UNITED STATES DEPARTMENT OF THE INTERIOR  
BUREAU OF LAND MANAGEMENT  
Washington, D. C. August 25, 1964

This plat, showing amended lottings, is based upon the official records, and having been correctly prepared in accordance with the regulations, is hereby accepted.

For the Director

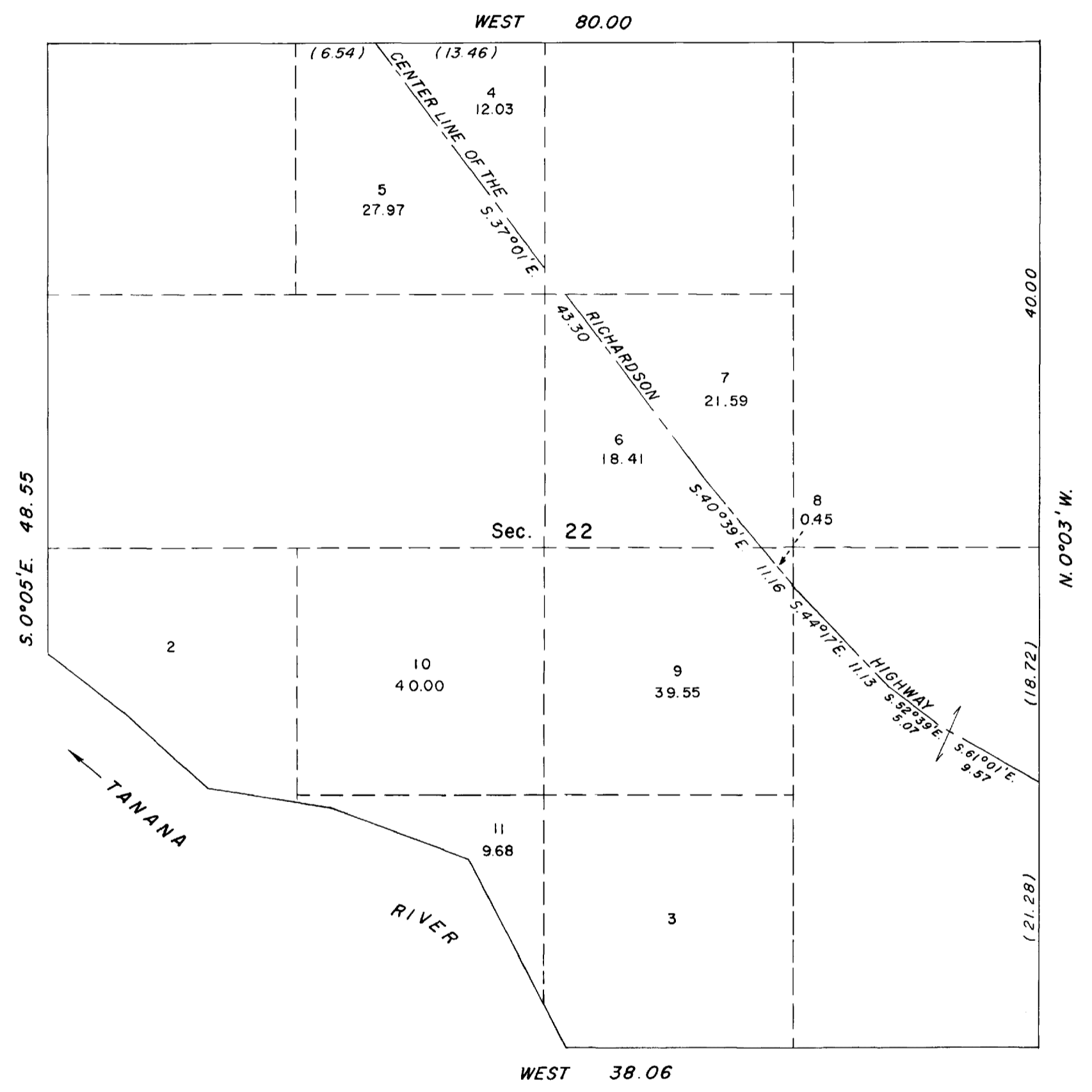
Chief, Division of Engineering



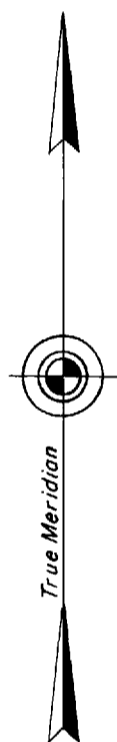




TOWNSHIP 2 SOUTH, RANGE 2 EAST, OF THE FAIRBANKS MERIDIAN, ALASKA  
SUPPLEMENTAL PLAT OF SECTION 22



This plat, showing a subdivision of section 22, and further subdivision of lot 1, section 22, is based upon the plat accepted October 8, 1921, and survey data of the Richardson Highway Centerline furnished by the Bureau of Public Roads.



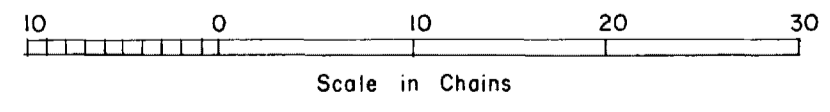
UNITED STATES DEPARTMENT OF THE INTERIOR  
BUREAU OF LAND MANAGEMENT  
Washington, D. C. July 18, 1967

This plat, showing amended lottings, is based upon the official records, and having been correctly prepared in accordance with the regulations, is hereby accepted.

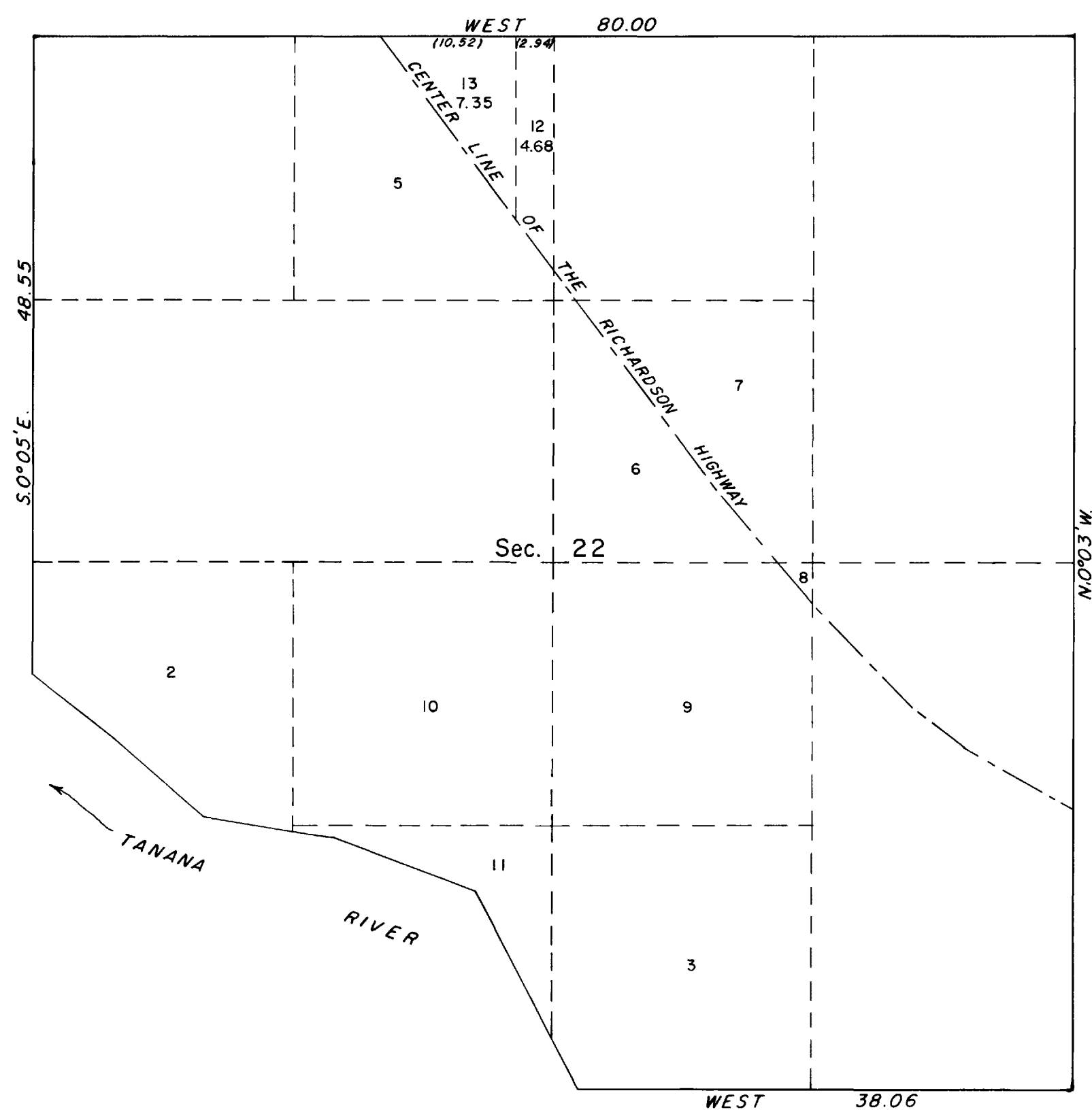
For the Director

*Clark J. Lumm*

Acting Chief, Division of Engineering



TOWNSHIP 2 SOUTH, RANGE 2 EAST, OF THE FAIRBANKS MERIDIAN, ALASKA  
 SUPPLEMENTAL PLAT OF SECTION 22



This plat, showing amended lottings, is based upon the plat of original survey accepted October 8, 1921, and Supplemental plat of section 22, accepted July 18, 1967.

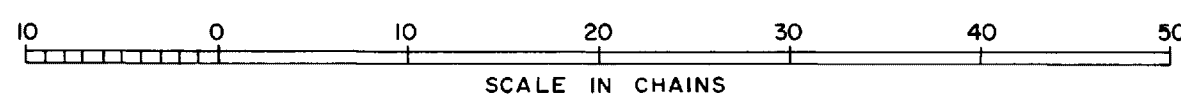
UNITED STATES DEPARTMENT OF THE INTERIOR  
 BUREAU OF LAND MANAGEMENT  
 Washington, D. C. August 25, 1969

This plat, showing amended lottings, is based upon the official records, and having been correctly prepared in accordance with the regulations, is hereby accepted.

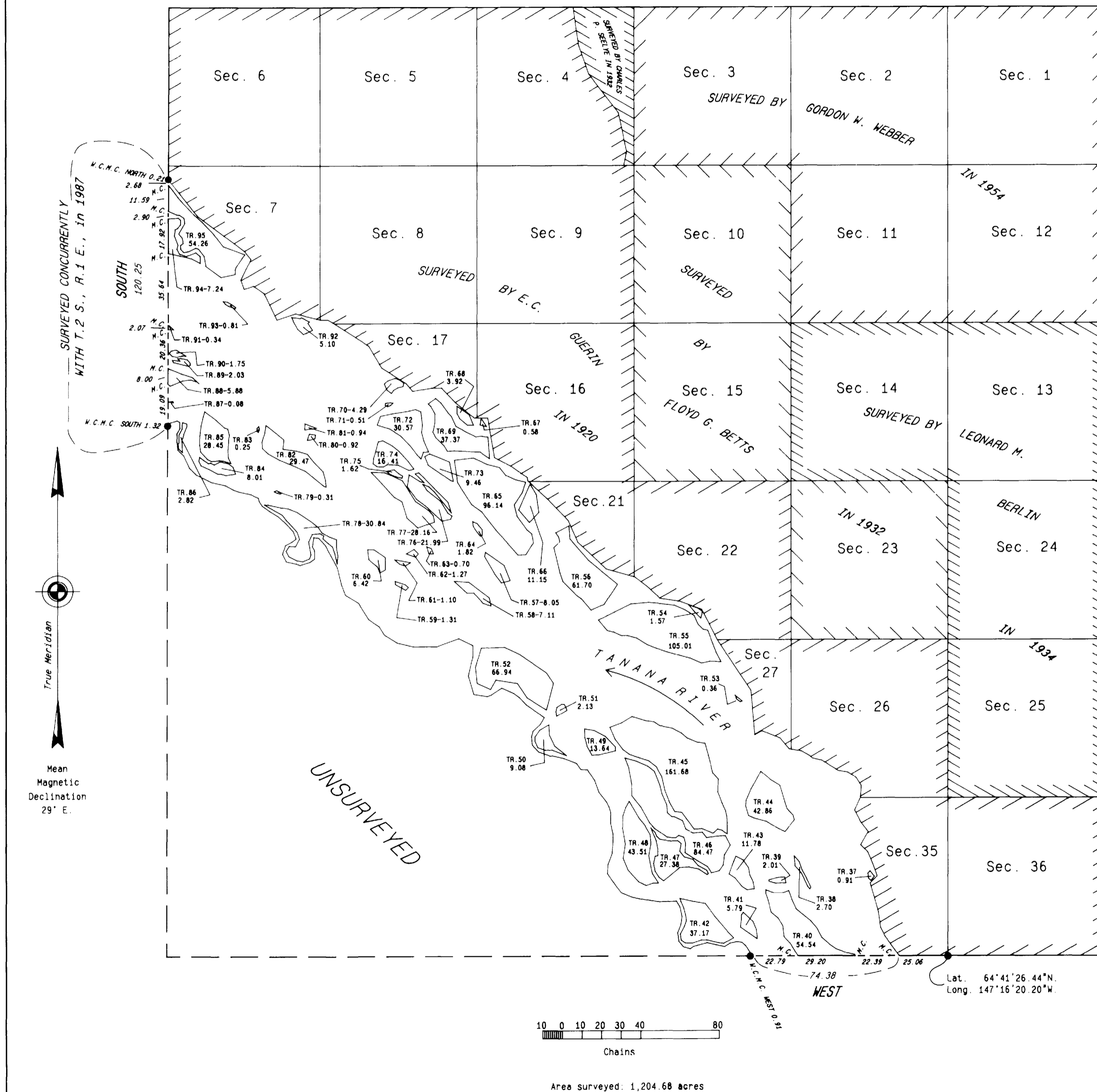
For the Director

*Clark I. Summ*

Chief, Division of Cadastral Survey



# TOWNSHIP 2 SOUTH, RANGE 2 EAST, OF THE FAIRBANKS MERIDIAN, ALASKA



The history of surveys is contained in the field notes.

This plat and field notes represent the retracement and survey of a portion of the south boundary and a portion of the meanders of the Tanana River in Township 2 South, Range 2 East, Fairbanks Meridian, Alaska.

This survey was executed by Charles E. Akin, Jr., Registered Alaska Land Surveyor No. LS-5131, May 4 through July 27, 1987, in accordance with the specifications set forth in the Manual of Surveying Instructions, 1973, Special Instructions for Group No. 444, Alaska, dated December 12, 1985, Amended Special Instructions dated April 15, 1987, Amended Special Instructions dated May 5, 1987, under Contract No. YA551-C16-340098, dated September 26, 1986, and Notice to Proceed dated April 29, 1987.

This survey encompasses all land, including islands, islets and rocks, above the line of mean high water which were in existence at the time of survey whether or not they are shown on this plat.

UNITED STATES DEPARTMENT OF THE INTERIOR  
BUREAU OF LAND MANAGEMENT  
Anchorage, Alaska

This plat is strictly conformable to the approved field notes, and the survey, having been correctly executed in accordance with the requirements of law and the regulations of this Bureau, is hereby accepted.

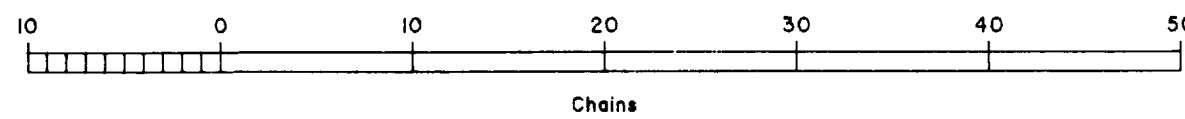
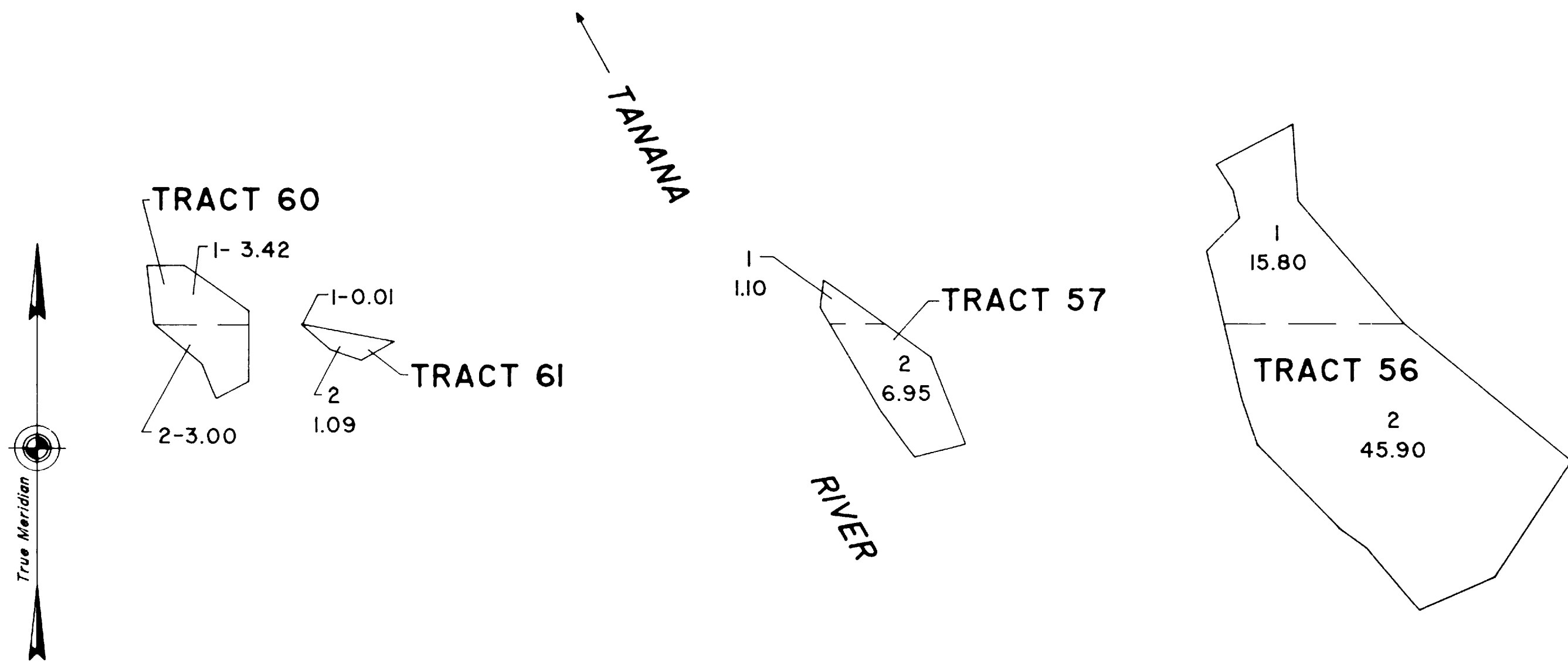
For the Director

Date \_\_\_\_\_  
Deputy State Director for Cadastral Survey, Alaska

# TOWNSHIP 2 SOUTH, RANGE 2 EAST, OF THE FAIRBANKS MERIDIAN, ALASKA

## SUPPLEMENTAL PLAT

This supplemental plat of Township 2 South, Range 2 East, Fairbanks Meridian, showing amended lottings created by the subdivision of Tracts 56, 57, 60, and 61 by the theoretical east and west centerline of section 21 extending to the west bank of the Tanana River is based upon the plat of Township 2 South, Range 2 East, Fairbanks Meridian, Alaska, accepted June 22, 1988, and Public Land Order No. 1521.



Acceptance of this survey does not purport to transfer any interest in submerged lands to which the State of Alaska is entitled under the Equal Footing Doctrine and Section 6(m) of the Alaska Statehood Act, P.L. 85-508, notwithstanding the use, location, or absence of meander lines to depict water bodies.

UNITED STATES DEPARTMENT OF THE INTERIOR  
BUREAU OF LAND MANAGEMENT  
Anchorage, Alaska

This supplemental plat, showing amended lottings, is based upon the official records and, having been correctly prepared in accordance with the regulations of this Bureau, is hereby accepted.

For the Director

*Horace D. Jander* *June 25, 1990*  
 Deputy State Director for Cadastral Survey, Alaska  
*Acting*