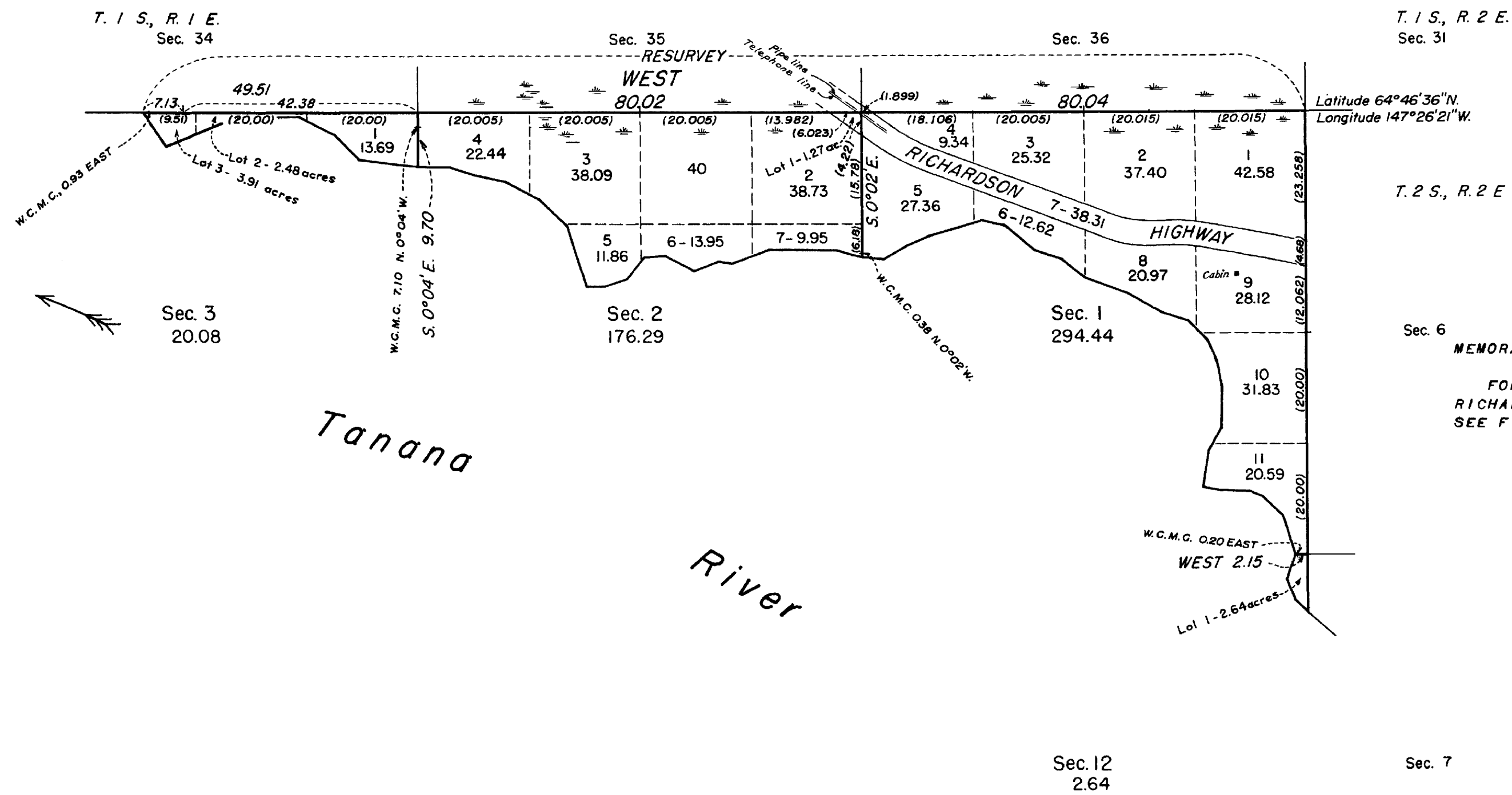


TOWNSHIP 2 SOUTH, RANGE 1 EAST, OF THE FAIRBANKS MERIDIAN, ALASKA.

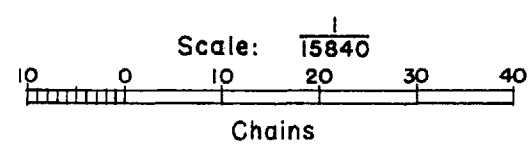


MEMORANDUM:
 FOR BEARINGS AND DISTANCES ALONG
 RICHARDSON HIGHWAY RIGHT-OF-WAY BOUNDARIES,
 SEE FIELD NOTES.

Area surveyed: 493.45 acres.

HISTORY OF SURVEYS

NORTH BOUNDARY SURVEYED BY W. H. THORN IN 1911,
 AND EAST BOUNDARY SURVEYED BY E. C. GUERIN, JULY, 1920.
 DEPENDENT RESURVEY OF NORTH BOUNDARY AND SURVEY
 OF SUBDIVISIONAL AND MEANDER LINES AS SHOWN ON THIS PLAT
 EXECUTED BY LLOYD E. TOLAND SEPT. 21 TO 28, 1949, UNDER
 SPECIAL INSTRUCTIONS DATED APRIL 27, 1934, FOR GROUP 49,
 ALASKA.



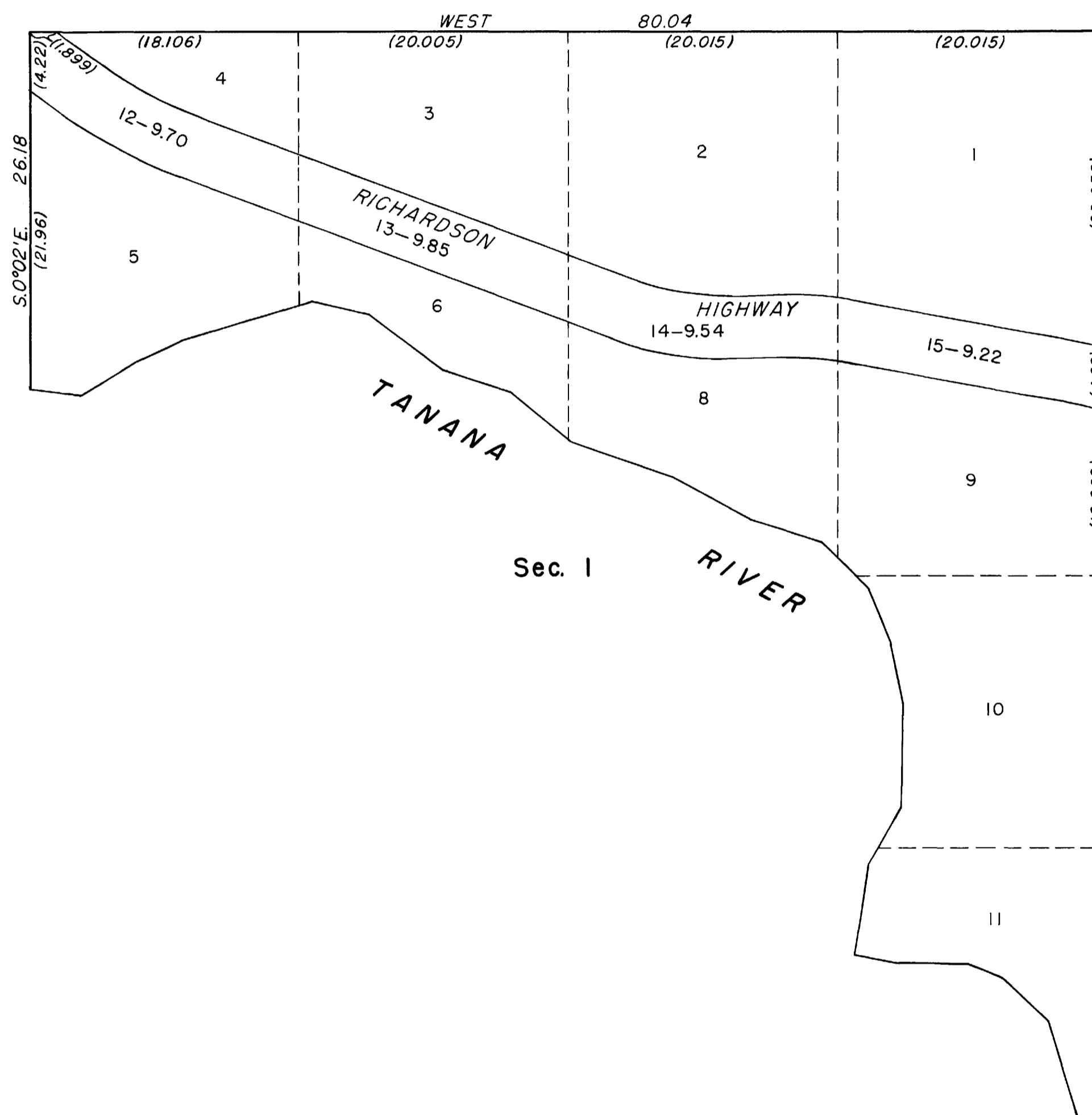
UNITED STATES DEPARTMENT OF THE INTERIOR
 BUREAU OF LAND MANAGEMENT

WASHINGTON, D. C., JUNE 5, 1951

THIS PLAT IS STRICTLY CONFORMABLE TO THE APPROVED
 FIELD NOTES, AND THE SURVEY, HAVING BEEN CORRECTLY EXECUTED
 IN ACCORDANCE WITH THE REQUIREMENTS OF LAW AND THE REGULATIONS
 OF THIS BUREAU, IS HEREBY ACCEPTED.

FOR THE DIRECTOR
William F. Richards
 CHIEF, BRANCH OF SURVEYS

TOWNSHIP 2 SOUTH, RANGE 1 EAST, OF THE FAIRBANKS MERIDIAN, ALASKA
SUPPLEMENTAL PLAT OF SECTION 1



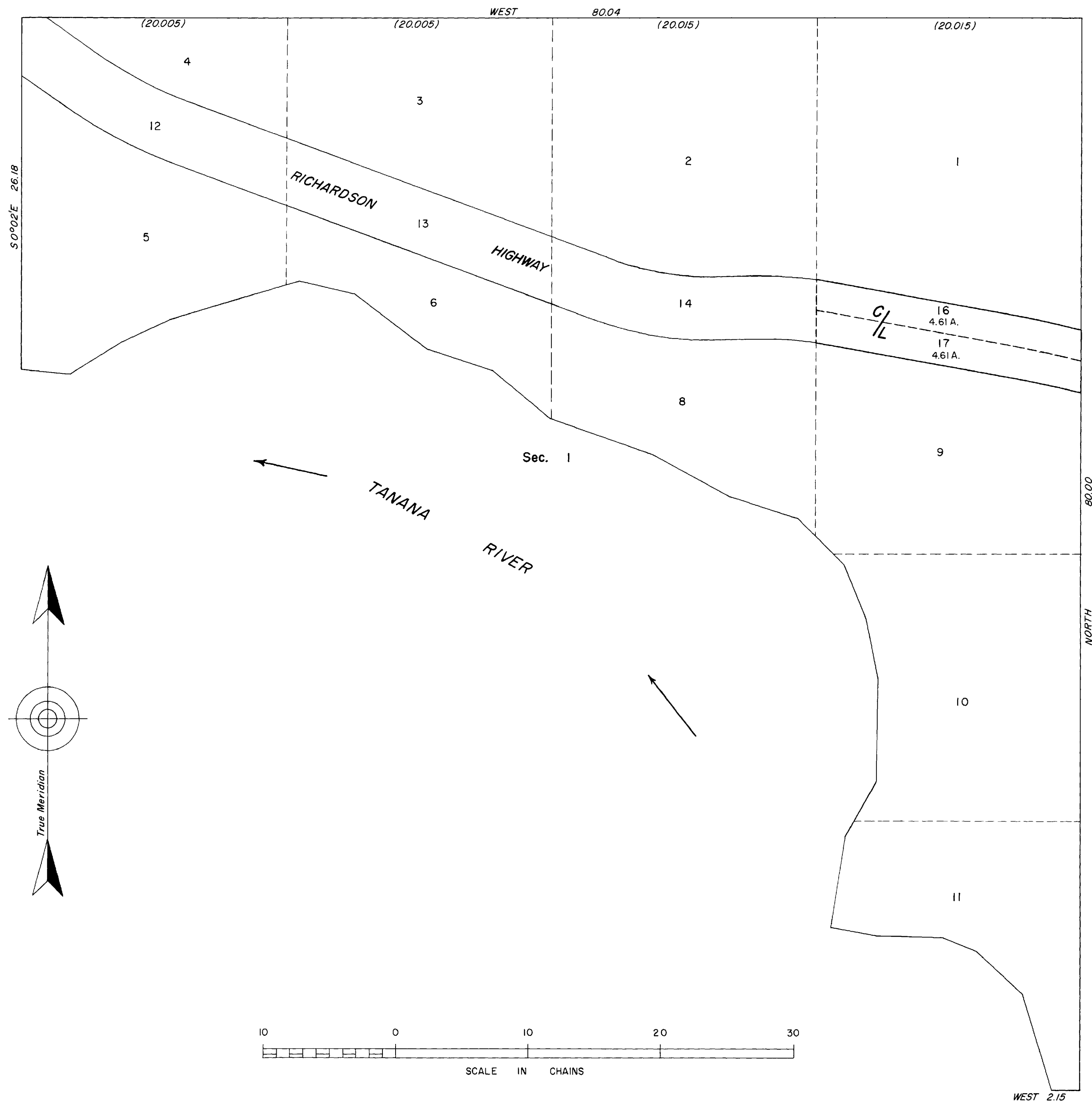
This plat showing a subdivision of original lot 7 is based upon the plat accepted June 5, 1951.

UNITED STATES DEPARTMENT OF THE INTERIOR
BUREAU OF LAND MANAGEMENT
Washington, D. C., May 12, 1952

This plat showing amended lottings, having been correctly prepared in accordance with the regulations, is hereby accepted.

For the Director
William F. Richards
Chief, Branch of Surveys

TOWNSHIP 2 SOUTH, RANGE 1 EAST, FAIRBANKS MERIDIAN, ALASKA
 SUPPLEMENTAL PLAT



This supplemental plat of Section 1, Township 2 South, Range 1 East, of the Fairbanks Meridian, Alaska, shows amended lotting for the area formerly designated lot 15, as based upon the plats accepted May 12, 1952 and June 5, 1951.

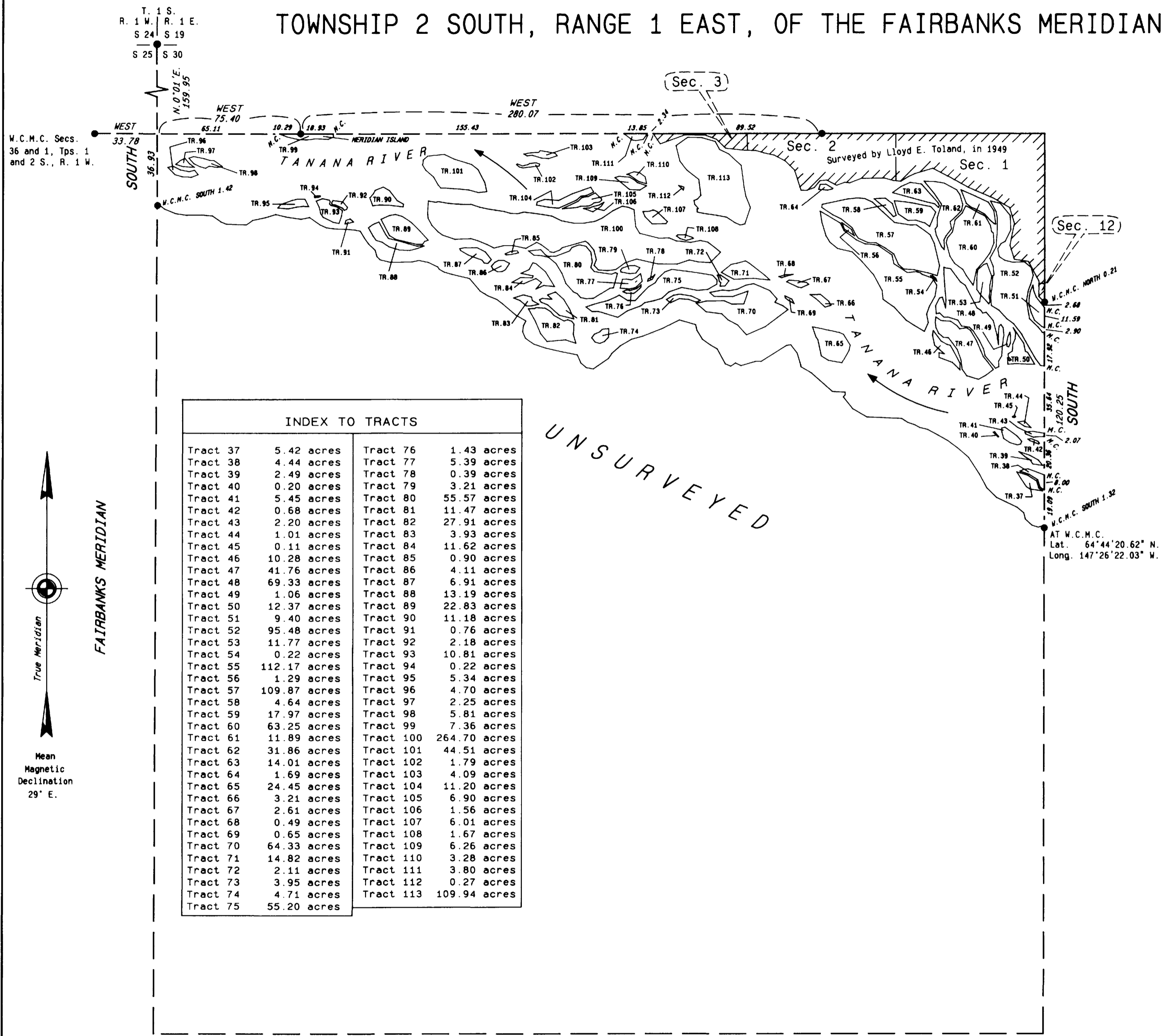
UNITED STATES DEPARTMENT OF THE INTERIOR
 BUREAU OF LAND MANAGEMENT
 Washington, D.C. December 20, 1961

This plat, showing amended lottings, is based upon the official records, and having been correctly prepared in accordance with the regulations, is hereby accepted.

For the Director

E. J. Lemington
 Chief, Division of Engineering

TOWNSHIP 2 SOUTH, RANGE 1 EAST, OF THE FAIRBANKS MERIDIAN, ALASKA



INDEX TO TRACTS

Tract 37	5.42 acres	Tract 76	1.43 acres
Tract 38	4.44 acres	Tract 77	5.39 acres
Tract 39	2.49 acres	Tract 78	0.39 acres
Tract 40	0.20 acres	Tract 79	3.21 acres
Tract 41	5.45 acres	Tract 80	55.57 acres
Tract 42	0.68 acres	Tract 81	11.47 acres
Tract 43	2.20 acres	Tract 82	27.91 acres
Tract 44	1.01 acres	Tract 83	3.93 acres
Tract 45	0.11 acres	Tract 84	11.62 acres
Tract 46	10.28 acres	Tract 85	0.90 acres
Tract 47	41.76 acres	Tract 86	4.11 acres
Tract 48	69.33 acres	Tract 87	6.91 acres
Tract 49	1.06 acres	Tract 88	13.19 acres
Tract 50	12.37 acres	Tract 89	22.83 acres
Tract 51	9.40 acres	Tract 90	11.18 acres
Tract 52	95.48 acres	Tract 91	0.76 acres
Tract 53	11.77 acres	Tract 92	2.18 acres
Tract 54	0.22 acres	Tract 93	10.81 acres
Tract 55	112.17 acres	Tract 94	0.22 acres
Tract 56	1.29 acres	Tract 95	5.34 acres
Tract 57	109.87 acres	Tract 96	4.70 acres
Tract 58	4.64 acres	Tract 97	2.25 acres
Tract 59	17.97 acres	Tract 98	5.81 acres
Tract 60	63.25 acres	Tract 99	7.36 acres
Tract 61	11.89 acres	Tract 100	264.70 acres
Tract 62	31.86 acres	Tract 101	44.51 acres
Tract 63	14.01 acres	Tract 102	1.79 acres
Tract 64	1.69 acres	Tract 103	4.09 acres
Tract 65	24.45 acres	Tract 104	11.20 acres
Tract 66	3.21 acres	Tract 105	6.90 acres
Tract 67	2.61 acres	Tract 106	1.56 acres
Tract 68	0.49 acres	Tract 107	6.01 acres
Tract 69	0.65 acres	Tract 108	1.67 acres
Tract 70	64.33 acres	Tract 109	6.26 acres
Tract 71	14.82 acres	Tract 110	3.28 acres
Tract 72	2.11 acres	Tract 111	3.80 acres
Tract 73	3.95 acres	Tract 112	0.27 acres
Tract 74	4.71 acres	Tract 113	109.94 acres
Tract 75	55.20 acres		

The history of surveys is contained in the field notes.

This plat and field notes represent the retracement of a portion of the north boundary, the survey of the Fairbanks Meridian along a portion of the west boundary, a portion of the east boundary, and a portion of the meanders of the Tanana River in Township 2 South, Range 1 East, Fairbanks Meridian, Alaska.

This survey was executed by Charles E. Akin, Jr., Registered Alaska Land Surveyor No. LS-5131, May 4 through July 27, 1987, in accordance with the specifications set forth in the Manual of Surveying Instructions, 1973, Special Instructions for Group No. 444, Alaska, dated December 12, 1985, Amended Special Instructions dated April 15, 1987, Amended Special Instructions dated May 5, 1987, under Contract No. YA551-CT6-340098, dated September 26, 1986, and Notice to Proceed dated April 29, 1987.

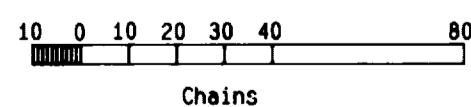
This survey encompasses all land, including islands, islets and rocks, above the line of mean high water which were in existence at the time of survey whether or not they are shown on this plat.

UNITED STATES DEPARTMENT OF THE INTERIOR
BUREAU OF LAND MANAGEMENT
Anchorage, Alaska

This plat is strictly conformable to the approved field notes, and the survey, having been correctly executed in accordance with the requirements of law and the regulations of this Bureau, is hereby accepted.

For the Director

James Dickbush
Date June 22, 1988
Deputy State Director for Cadastral Survey, Alaska.



Area surveyed: 1,504.29 acres