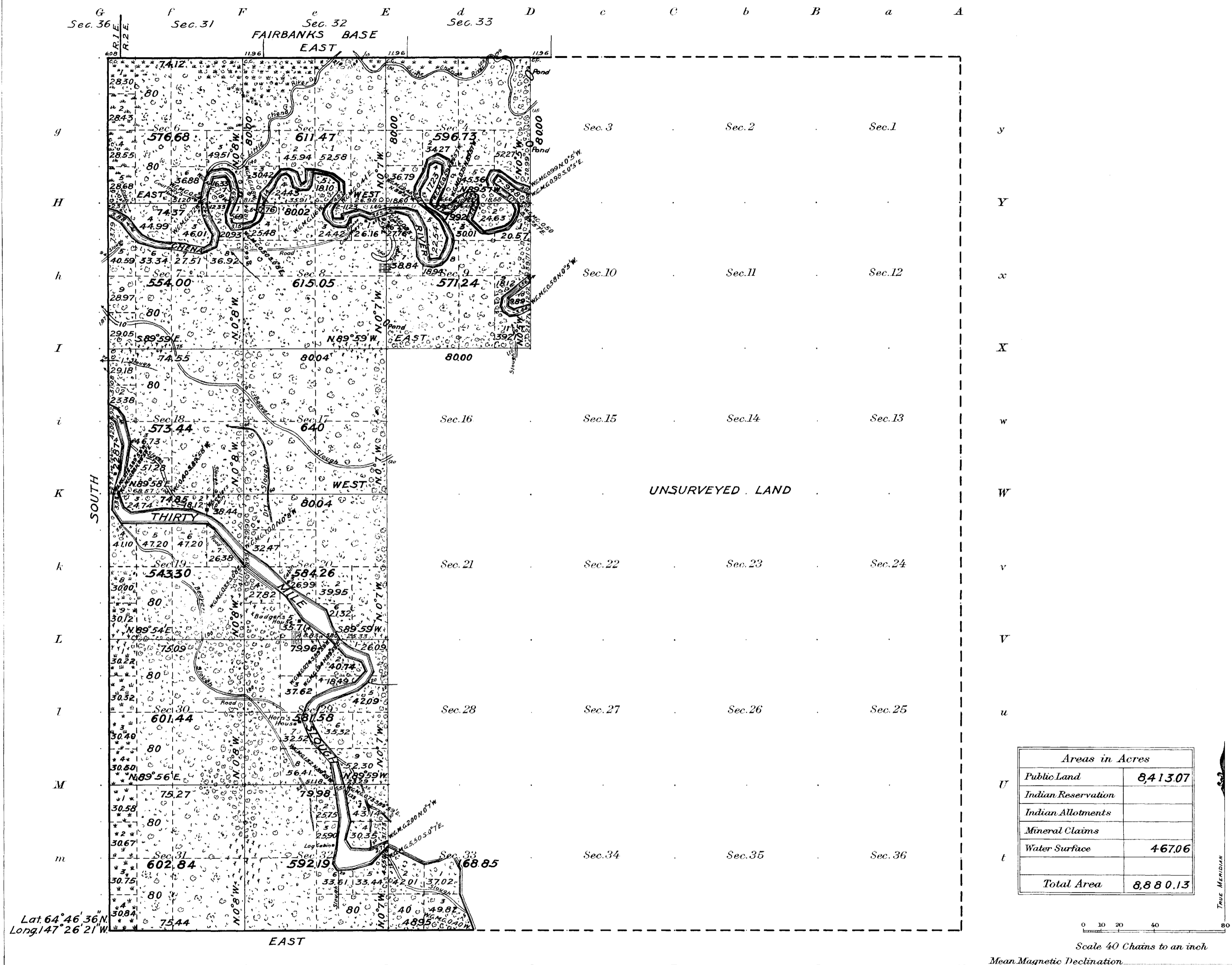


(4-675a)

ORIGINAL
Accepted October 8, 1921

Township No. 1 South Range No. 2 East of the Fairbanks Meridian, Alaska



| Areas in Acres | |
|--------------------|-----------------|
| Public Land | 8,413.07 |
| Indian Reservation | |
| Indian Allotments | |
| Mineral Claims | |
| Water Surface | 467.06 |
| Total Area | 8,880.13 |

Lat. 64° 46' 36" N
Long. 147° 26' 21" W

Scale 40 Chains to an inch
Mean Magnetic Declination

| Surveys Designated | By Whom Surveyed | Group | | Amount of Surveys | | | When Surveyed | |
|--------------------|--------------------------|-------|---------------|-------------------|------|------|---------------|---------------|
| | | No. | Date | Mls. | chs. | fts. | Begun | Completed |
| Fairbanks Base | W.N. Vance & S.G. Lundie | | June 29, 1910 | 0 | 06 | 08 | Sept. 7, 1910 | Sept. 7, 1910 |
| West Bdy. | S.G. Lundie | | " " " | 6 | 00 | 00 | 18 " | 29 " |
| Connections | " " " | | " " " | 0 | 06 | 08 | " " " | 18 " |
| Fairbanks Base | E.G. Guerin U.S.S. | 16 | " 5, 1920 | 3 | 00 | 00 | Aug. 27, 1920 | " 2, 1920 |
| South Bdy. | " " " | | " " " | 2 | 44 | 39 | July 9 " | July 30 " |
| Subdivisions | " " " | | " " " | 25 | 54 | 09 | Aug. 3 " | Sept. 5 " |
| Connections | " " " | | " " " | 0 | 35 | 88 | " 27 " | " 2 " |
| Meanders | " " " | | " " " | 26 | 06 | 84 | " 3 " | " 5 " |

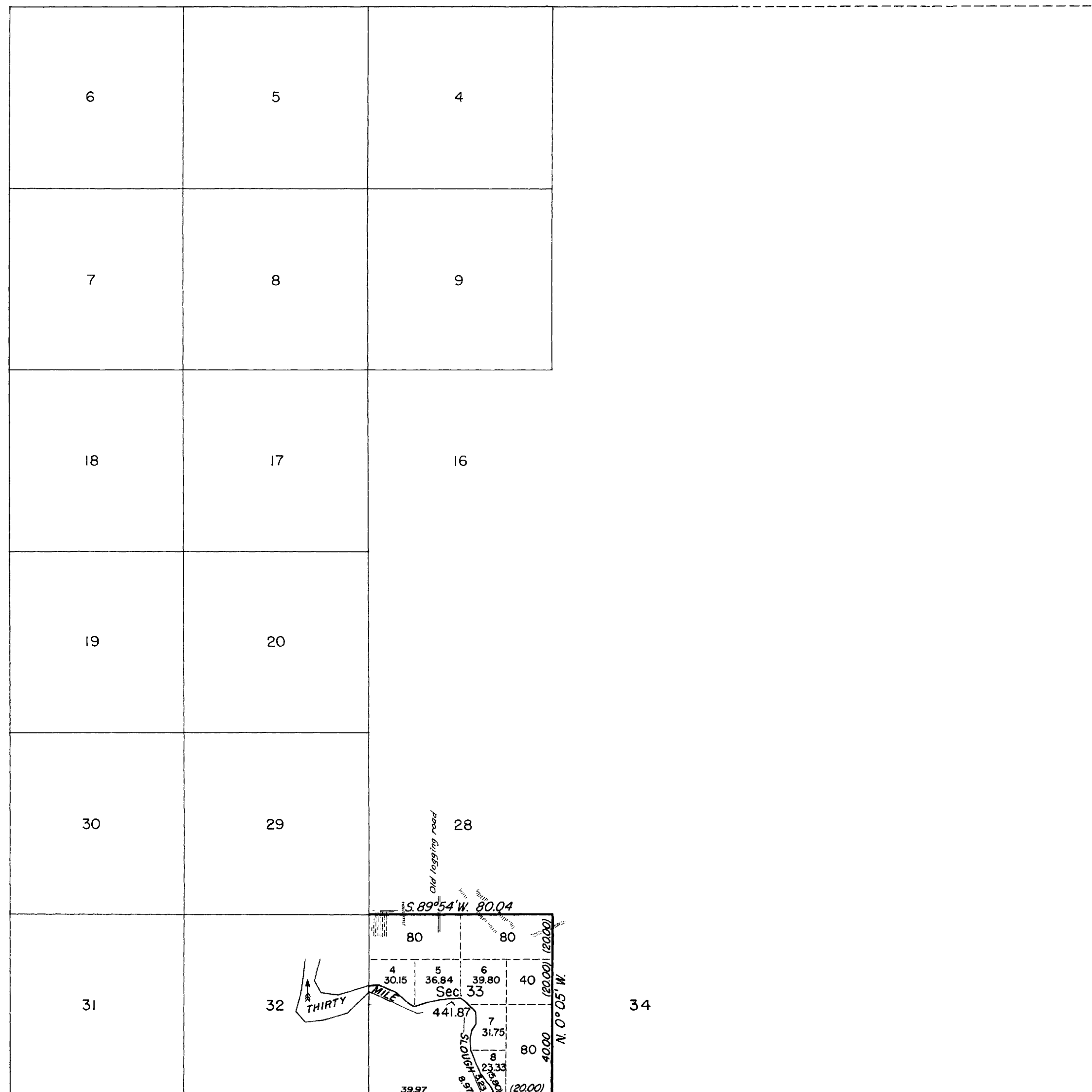
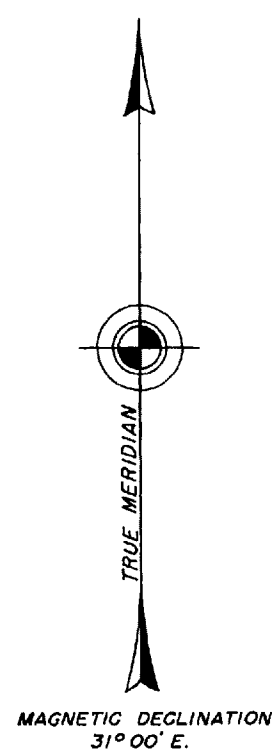
The above map of Township No. 1 South, Range No. 2 East of the Fairbanks Meridian, Alaska is strictly conformable to the field notes of the survey thereof on file in this office, which have been examined and approved.

U. S. Surveyor General's Office.
Juneau, Alaska, July 13, 1921

P. J. Dommer
Surveyor General.

ERR CHECK
J.C.S. 1911

TOWNSHIP 1 SOUTH, RANGE 2 EAST, OF THE FAIRBANKS MERIDIAN, ALASKA

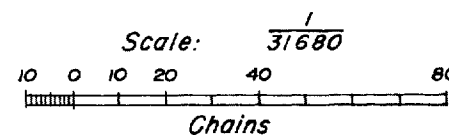


Latitude 64° 46' 36" N.
Longitude 147° 26' 21" W.

SEE PLAT APPROVED JULY 13, 1921 FOR RECORD OF PREVIOUS SURVEYS IN T. 1 S., R. 2 E., F. M.

THE PORTION OF SOUTH BOUNDARY, SUBDIVISIONAL LINES AND MEANDERS OF THE RIGHT BANK OF THIRTY MILE SLOUGH IN SECTION 33 SHOWN WITH HEAVY LINES ON THIS PLAT WERE SURVEYED BY LLOYD E. TOLAND, SEPT 29 TO OCT. 1, 1949, UNDER SPECIAL INSTRUCTIONS DATED APRIL 27, 1934 FOR GROUP 49, ALASKA.

T. 2 S., R. 2 E., F. M.
Area surveyed: 441.87 acres.

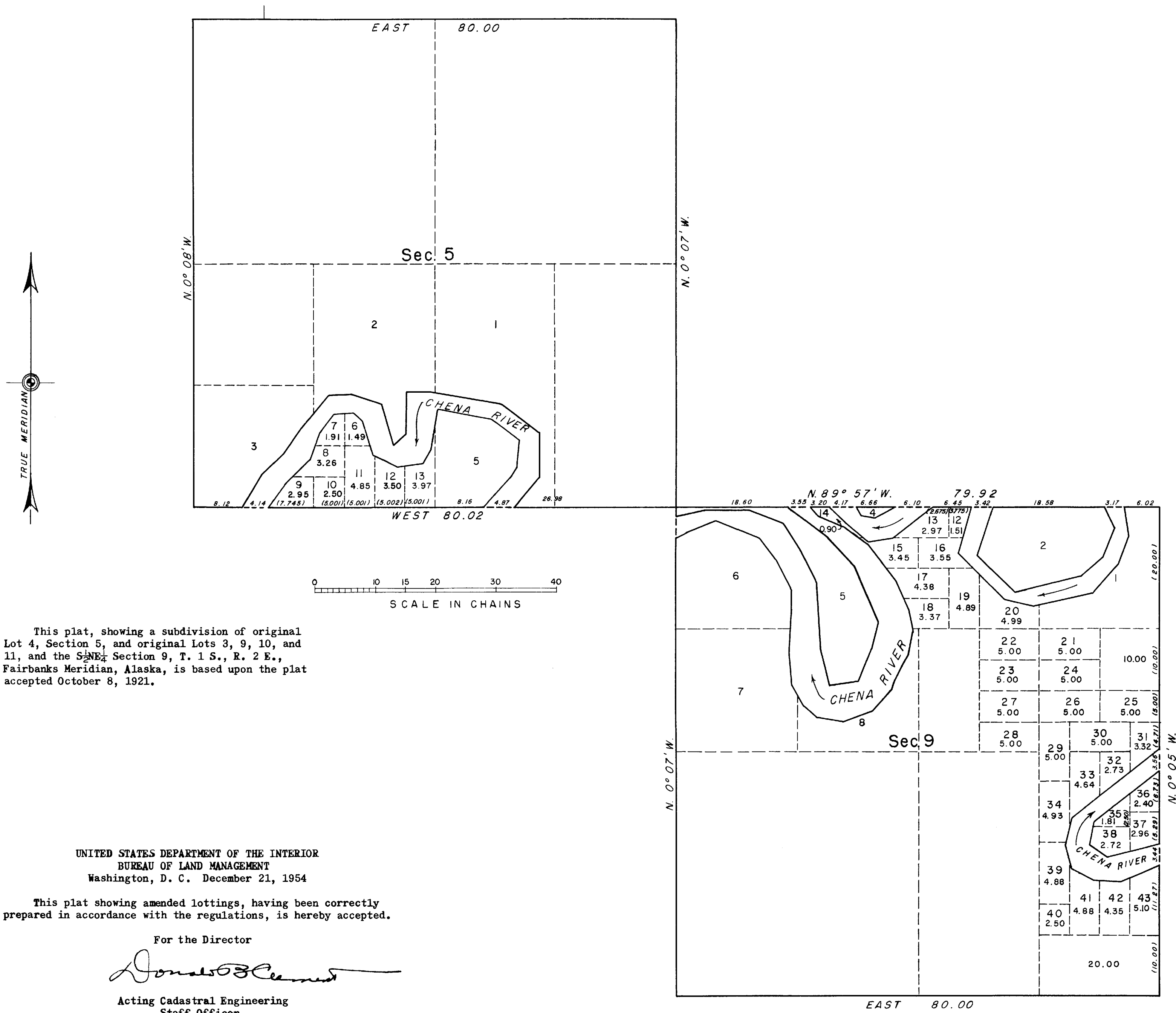


UNITED STATES DEPARTMENT OF THE INTERIOR
BUREAU OF LAND MANAGEMENT
WASHINGTON, D. C., MARCH 1, 1951

THIS PLAT IS STRICTLY CONFORMABLE TO THE APPROVED FIELD NOTES, AND THE SURVEY, HAVING BEEN CORRECTLY EXECUTED IN ACCORDANCE WITH THE REQUIREMENTS OF LAW AND THE REGULATIONS OF THIS BUREAU, IS HEREBY ACCEPTED.

FOR THE DIRECTOR
Earl G. Harrington
CHIEF, DIVISION OF CADASTRAL ENGINEERING

TOWNSHIP 1 SOUTH, RANGE 2 EAST, OF THE FAIRBANKS MERIDIAN, ALASKA
 SUPPLEMENTAL PLAT OF SECTIONS 5 & 9



This plat, showing a subdivision of original Lot 4, Section 5, and original Lots 3, 9, 10, and 11, and the S $\frac{1}{2}$ Section 9, T. 1 S., R. 2 E., Fairbanks Meridian, Alaska, is based upon the plat accepted October 8, 1921.

UNITED STATES DEPARTMENT OF THE INTERIOR
 BUREAU OF LAND MANAGEMENT
 Washington, D. C. December 21, 1954

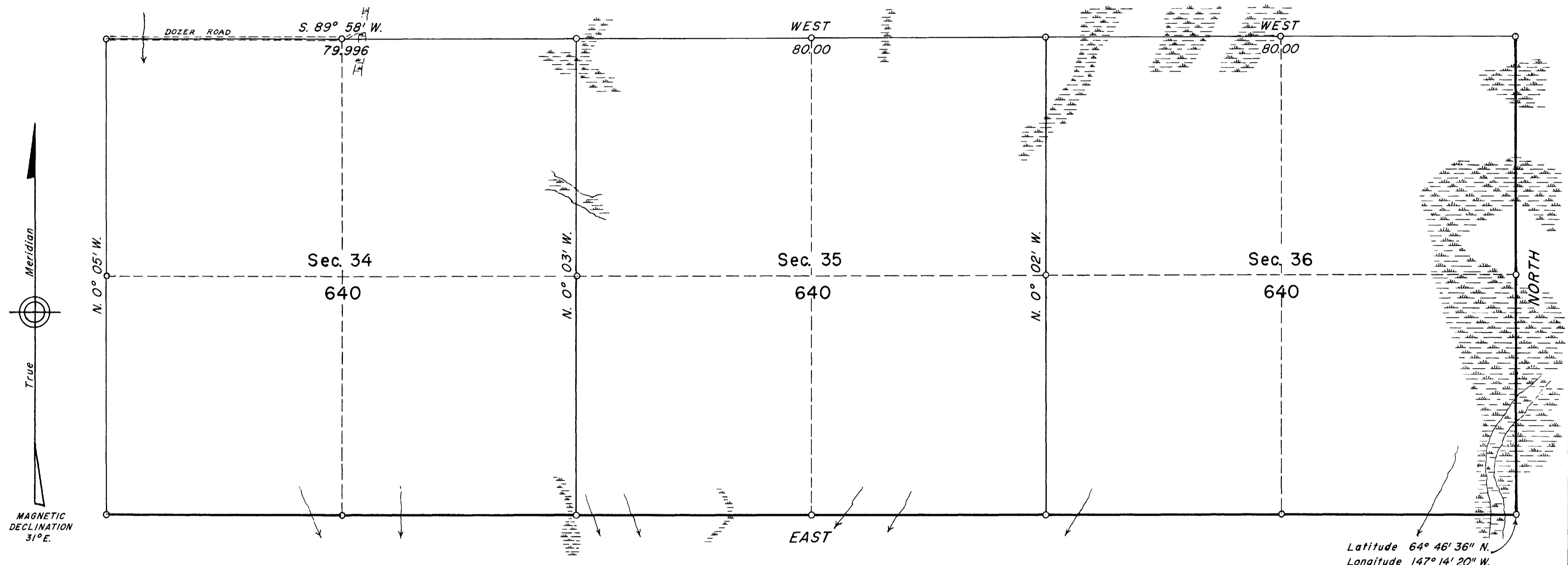
This plat showing amended lottings, having been correctly prepared in accordance with the regulations, is hereby accepted.

For the Director

Donald B. Clement

Acting Cadastral Engineering
 Staff Officer

TOWNSHIP 1 SOUTH, RANGE 2 EAST, OF THE FAIRBANKS MERIDIAN, ALASKA



Area surveyed: 1920 acres

See plats accepted October 8, 1921 and March 1, 1951 for record of previous surveys in Township 1 South, Range 2 East, of the Fairbanks Meridian.

Survey of portions of south and east boundaries and portion of subdivisional lines executed by Gordon W. Webber May 17 to June 1, 1954, under special instructions for Group 49, Alaska, dated April 27, 1934.

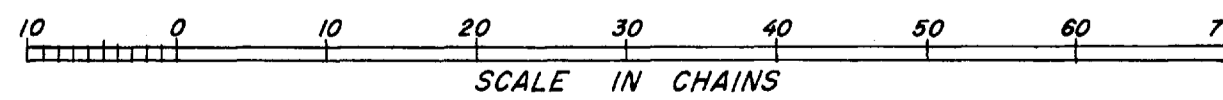
UNITED STATES DEPARTMENT OF THE INTERIOR
BUREAU OF LAND MANAGEMENT
Washington, D. C. February 2, 1955

This plat is strictly conformable to the approved field notes, and the survey, having been correctly executed in accordance with the requirements of law and the regulations of this Bureau, is hereby accepted.

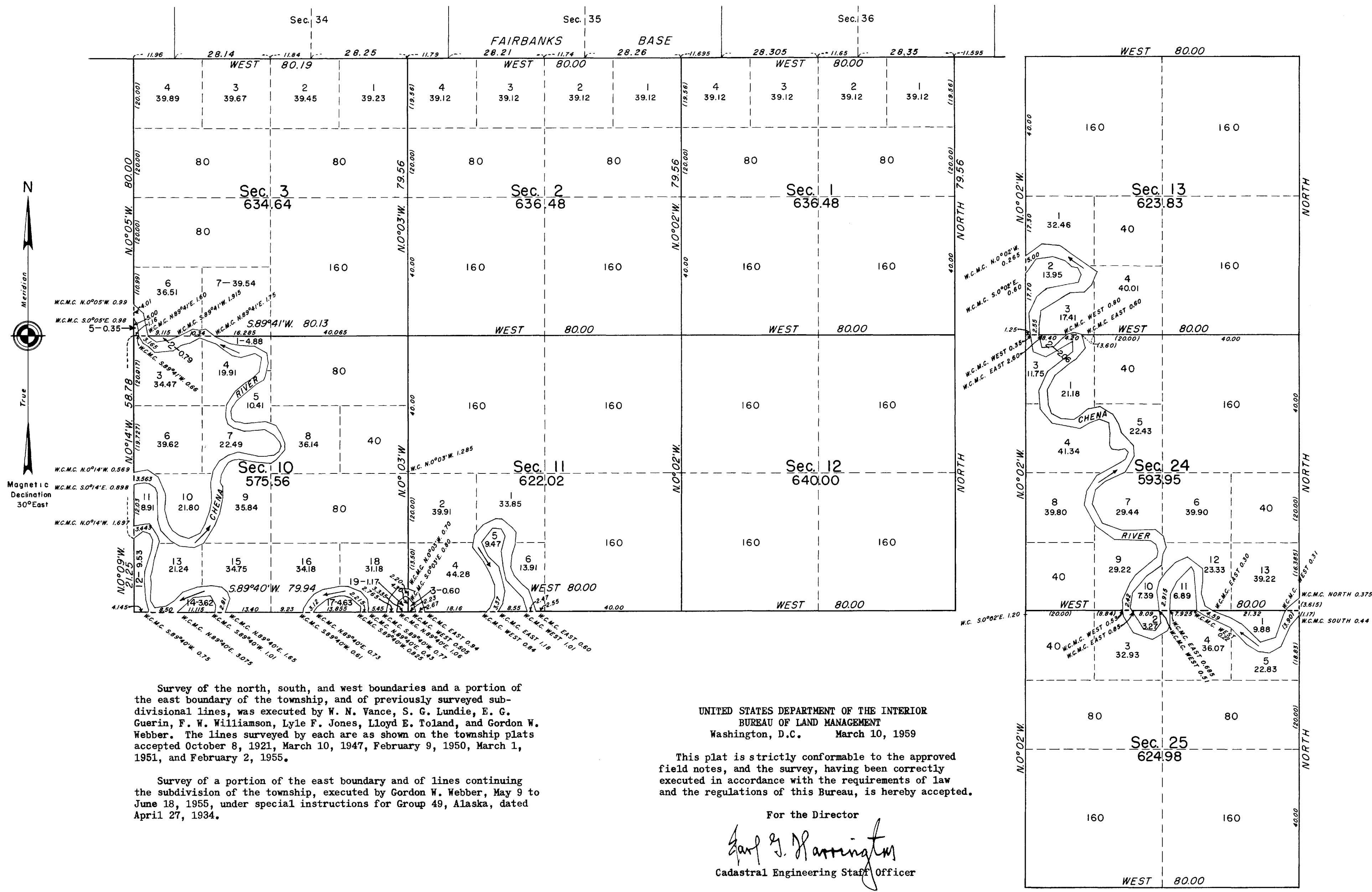
For the Director

Earl G. Harrington
Cadastral Engineering Staff Officer

o indicates an iron post



TOWNSHIP 1 SOUTH, RANGE 2 EAST, OF THE FAIRBANKS MERIDIAN, ALASKA.



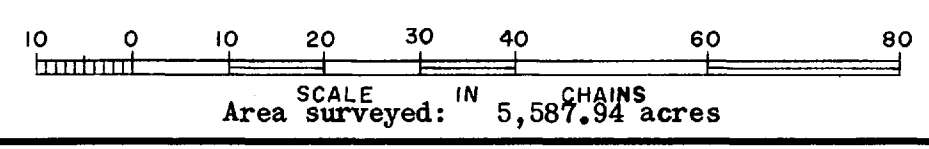
Survey of the north, south, and west boundaries and a portion of the east boundary of the township, and of previously surveyed subdivisional lines, was executed by W. N. Vance, S. G. Lundie, E. G. Guerin, F. W. Williamson, Lyle F. Jones, Lloyd E. Toland, and Gordon W. Webber. The lines surveyed by each are as shown on the township plats accepted October 8, 1921, March 10, 1947, February 9, 1950, March 1, 1951, and February 2, 1955.

Survey of a portion of the east boundary and of lines continuing the subdivision of the township, executed by Gordon W. Webber, May 9 to June 18, 1955, under special instructions for Group 49, Alaska, dated April 27, 1934.

UNITED STATES DEPARTMENT OF THE INTERIOR
BUREAU OF LAND MANAGEMENT
Washington, D.C. March 10, 1959

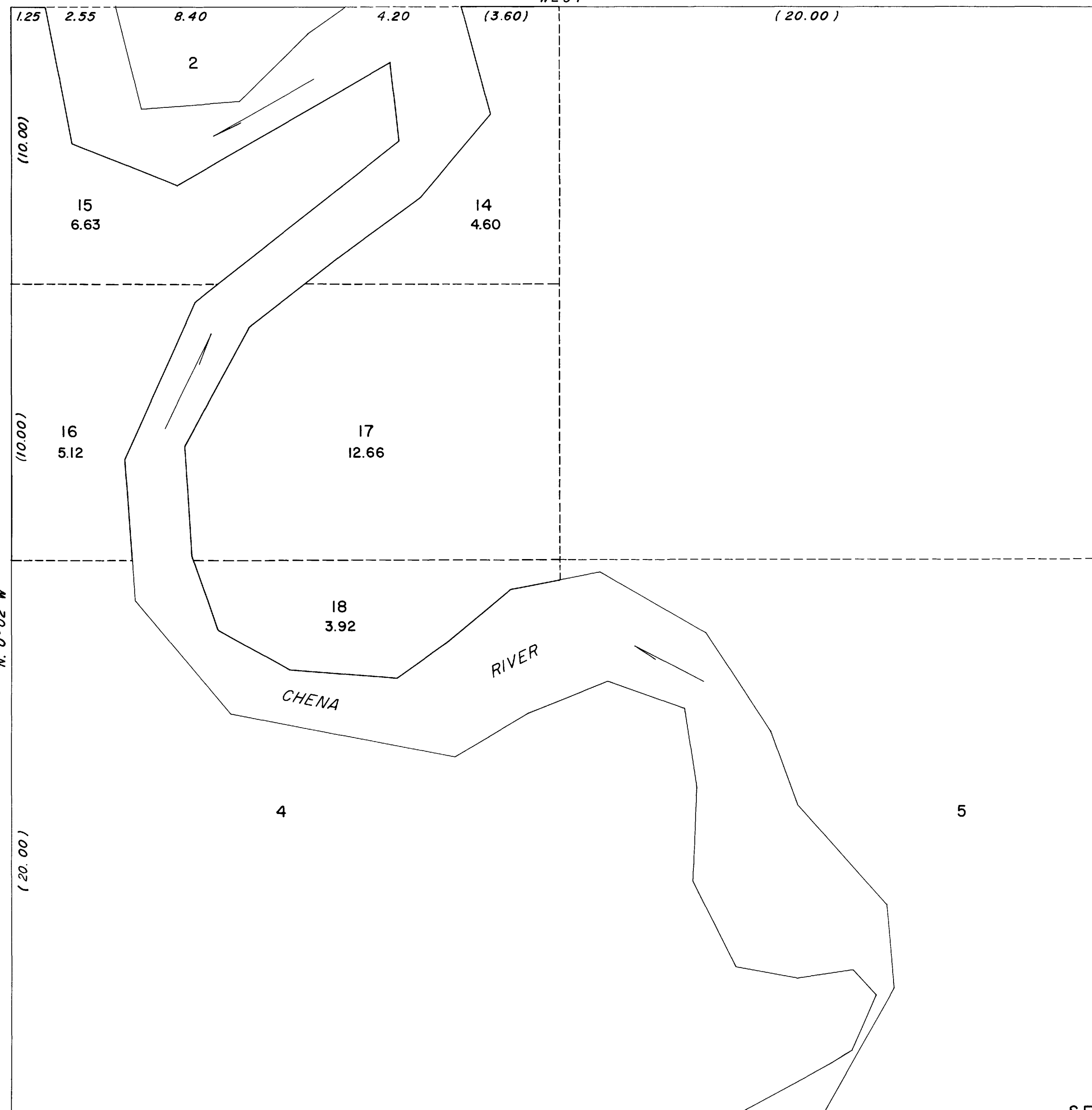
This plat is strictly conformable to the approved field notes, and the survey, having been correctly executed in accordance with the requirements of law and the regulations of this Bureau, is hereby accepted.

For the Director
Earl G. Harrington
Cadastral Engineering Staff Officer



TOWNSHIP 1 SOUTH, RANGE 2 EAST, OF THE FAIRBANKS MERIDIAN, ALASKA.

SUPPLEMENTAL PLAT
WEST



This supplemental plat of the NW $\frac{1}{4}$ of Sec. 24, T. 1 S., R. 2 E., Fairbanks Meridian, Alaska, shows the amended lotting for an area formerly designated Lots 1 and 3 as based upon the township plat accepted March 10, 1959.

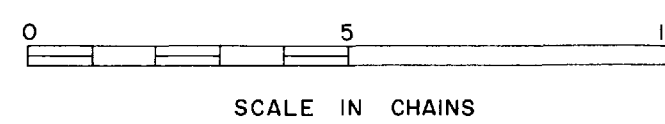
UNITED STATES DEPARTMENT OF THE INTERIOR
BUREAU OF LAND MANAGEMENT
Washington, D.C. April 17, 1962

This plat, showing amended lottings, is based upon the official records, and having been correctly prepared in accordance with the regulations, is hereby accepted.

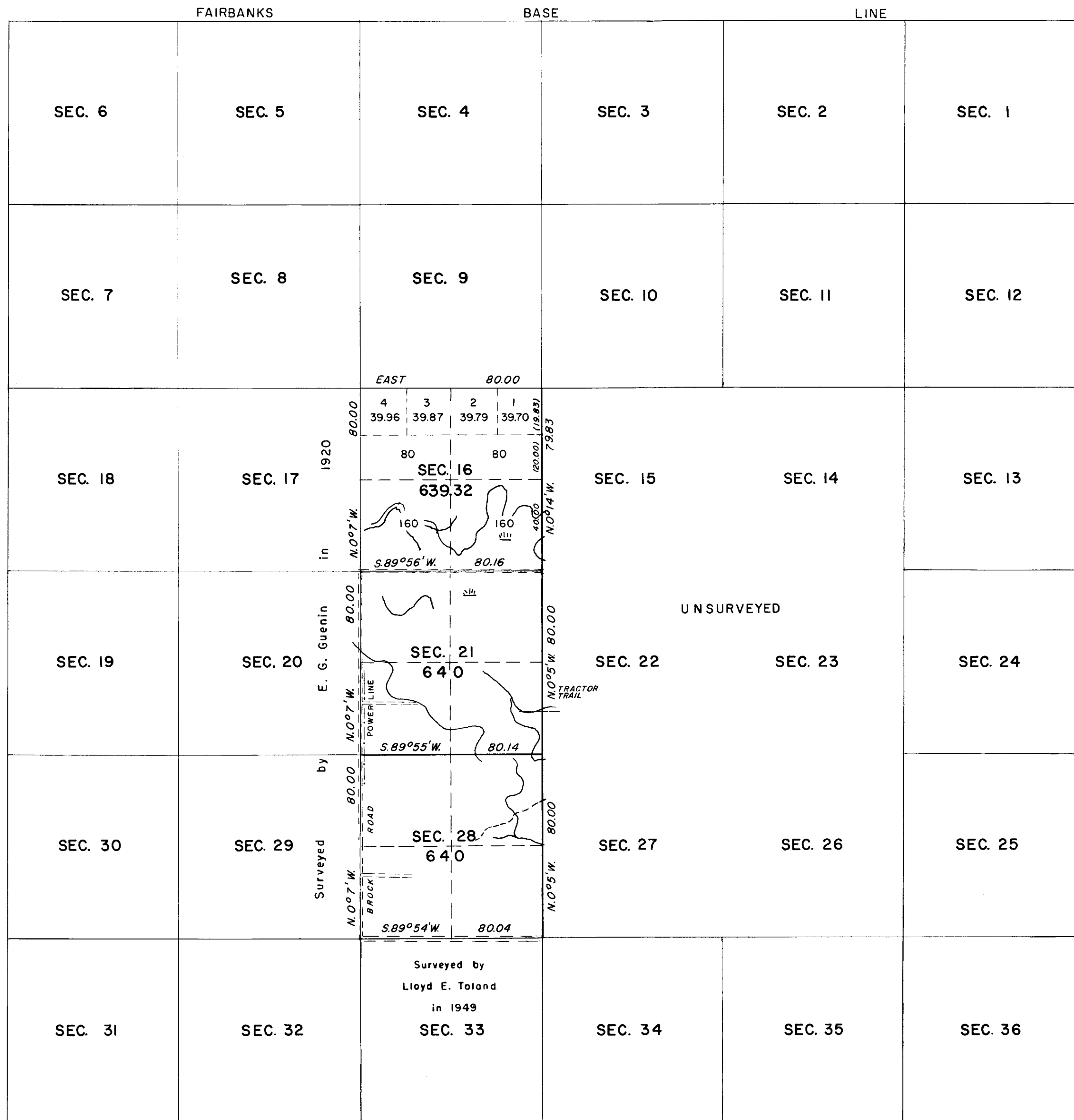
For the Director

E. J. Pennington
Chief, Division of Engineering

SEC. 24

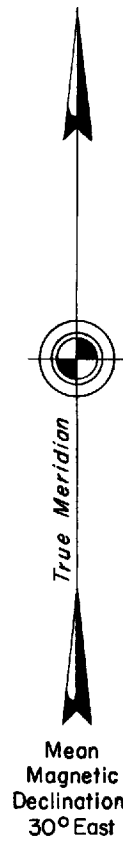


TOWNSHIP 1 SOUTH, RANGE 2 EAST OF THE FAIRBANKS MERIDIAN, ALASKA



A portion of the subdivisional lines surveyed by Kenneth C. Pettingill, April 13 to May 5, 1964, under Special Instructions dated April 27, 1934 and April 1, 1964, and, approved May 5, 1934 and April 1, 1964, for Group No. 49, Alaska.

The hydrography as shown was obtained from U. S. Geological Survey Maps.



UNSURVEYED

UNITED STATES DEPARTMENT OF THE INTERIOR
BUREAU OF LAND MANAGEMENT
Washington, D. C. March 2, 1967

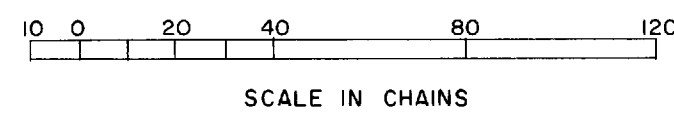
This plat is strictly conformable to the approved field notes, and the survey, having been correctly executed in accordance with the requirements of law and the regulations of this Bureau, is hereby accepted.

For the Director

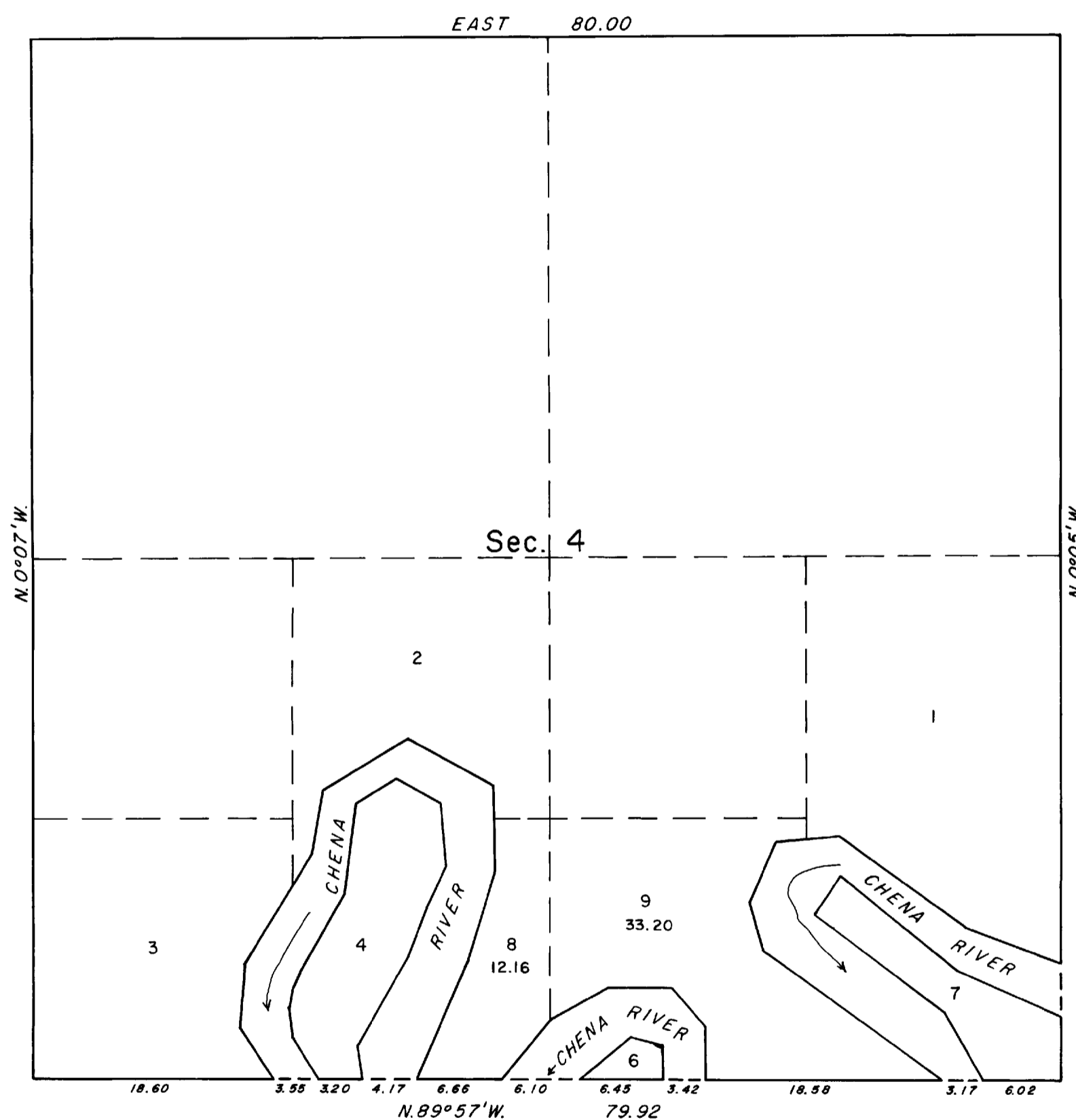
E. H. Huntington
Chief, Division of Engineering

LAT. 64°46'36"N.
LONG. 147°14'20"W.

AREA SURVEYED: 1,919.32 ACRES



TOWNSHIP 1 SOUTH, RANGE 2 EAST, OF THE FAIRBANKS MERIDIAN, ALASKA
SUPPLEMENTAL PLAT OF SECTION 4



This plat, showing a subdivision of original Lot 5, Section 4, is based upon the township plat accepted October 8, 1921.

UNITED STATES DEPARTMENT OF THE INTERIOR
BUREAU OF LAND MANAGEMENT
Washington, D.C. June 8, 1972

This plat, showing amended lottings, is based upon the official records and, having been correctly prepared in accordance with the regulations, is hereby accepted.

For the Director

Chief, Division of Cadastral Survey

