

# TOWNSHIP EXTERIORS.

Scale 1 inch to 160 chains

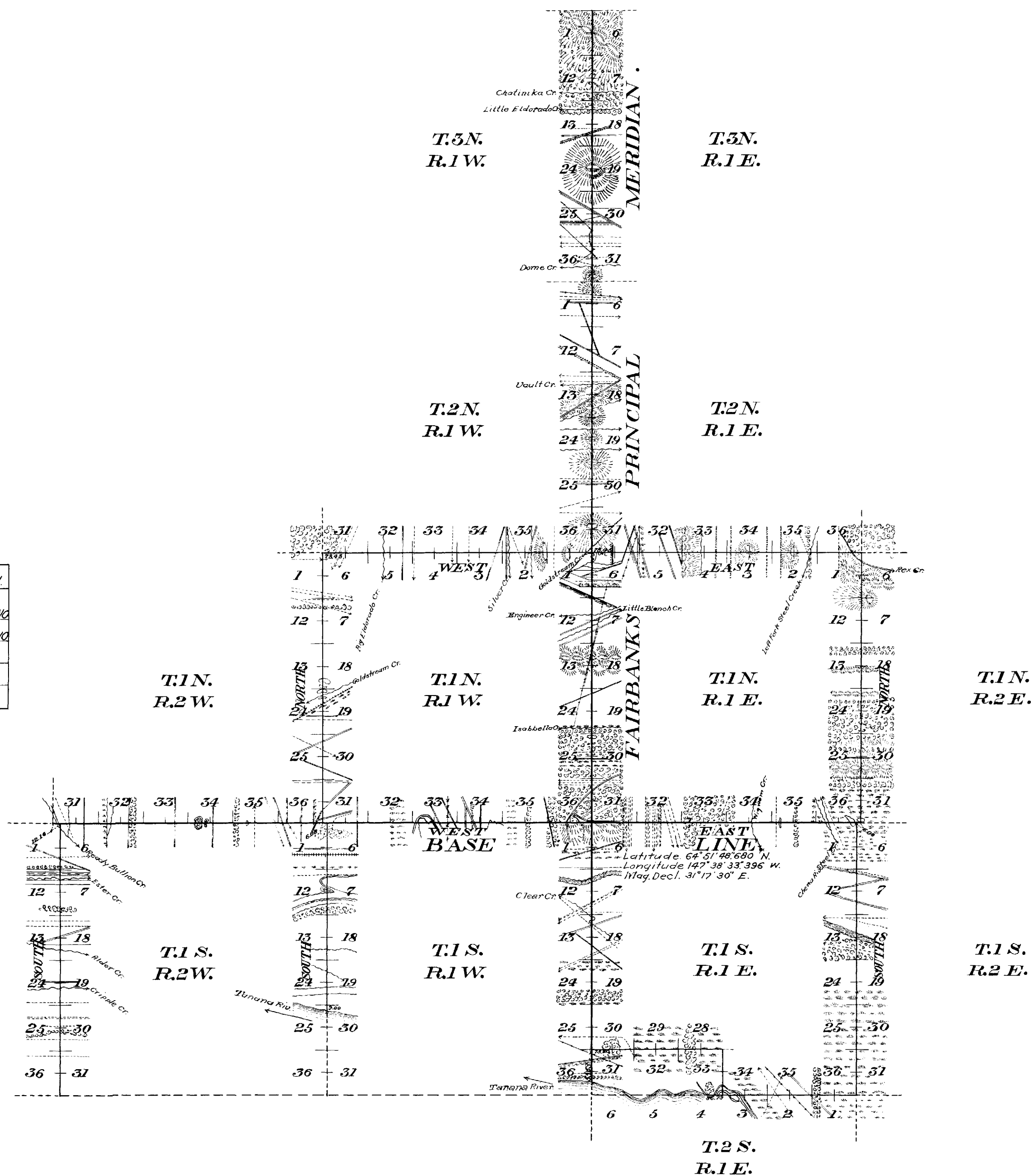
This Plat  
of  
Fairbanks Principal Meridian,  
through Tps. Nos. 1 2 and 3 North  
and No. 1 South between Ranges  
No. 1 East and No. 1 West; the Prin-  
cipal Base through Ranges  
Nos. 1 and 2 West and No. 1 East;  
the North and East boundaries  
of T. 1 N. R. 1 E.; the North and West  
boundaries of T. 1 N. R. 1 W.;  
the East boundary and a part  
of the South boundary of T. 1 S.  
R. 1 E. the West boundary of  
T. 1 S. R. 2 W. and a part of the West  
boundary of T. 1 S. R. 1 W. is  
strictly conformable to the  
field notes of the surveys  
thereof.

by  
Employees of the Geological  
Survey which have been ex-  
amined.....and filed  
in this office.  
U. S. Surveyor General's Office.  
Juneau, Alaska.  
June 15, 1912.

*W. L. Dittus*  
U. S. Surveyor General.

Table of Mileage

Survs. Designated	Amount			When Surveyed
	Mls.	Chs.	Lks.	
Standard Lines	41	55	63	Aug. 9. to Sept. 7. 1910
Township	46	01	10	Aug. 23 to Sept. 29. 1910

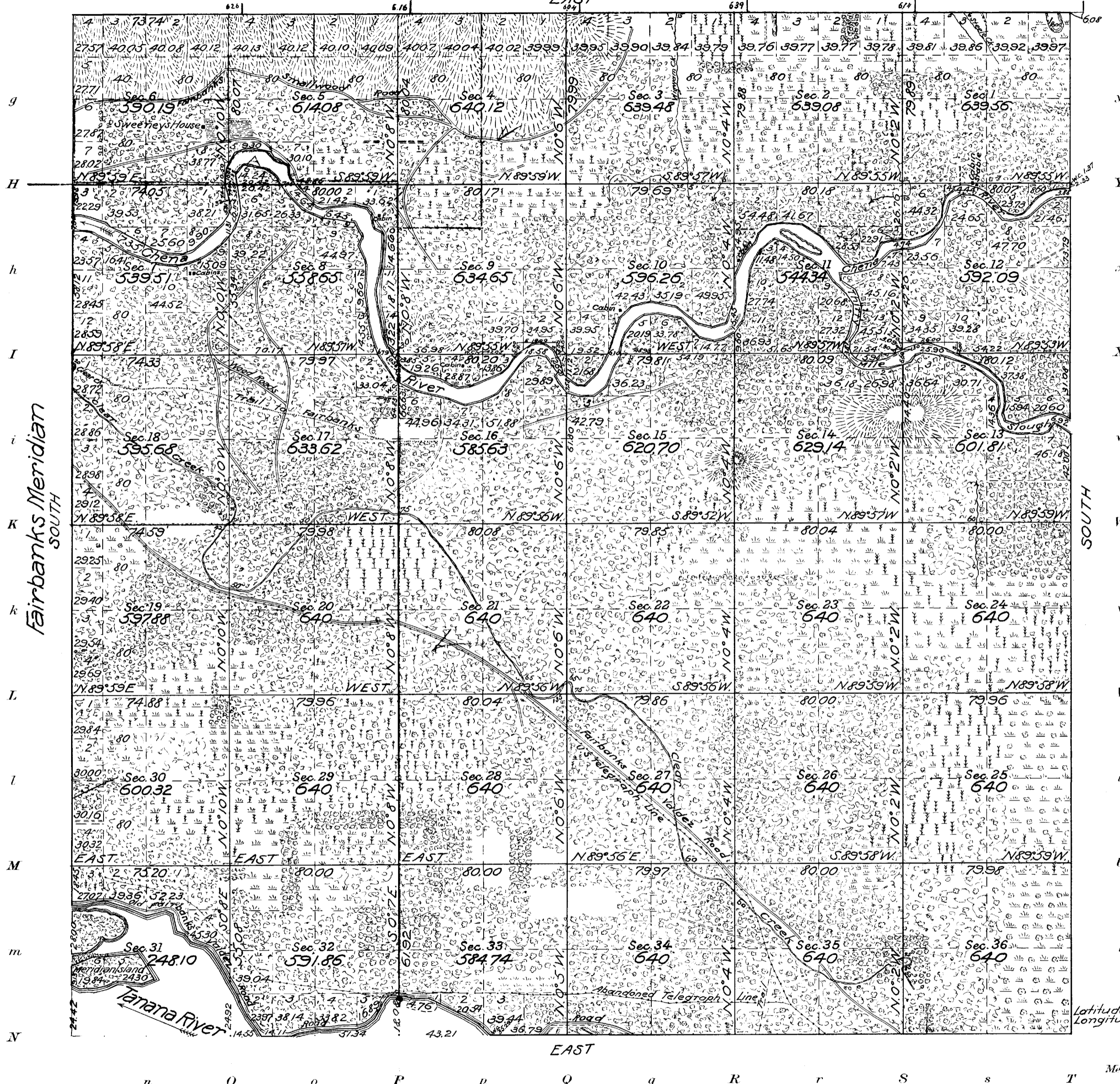


(4-6754)

# Township N<sup>o</sup>. 1 South Range N<sup>o</sup>. 1 East of the Fairbanks Meridian, Alaska

G F F E D C B a A

Fairbanks Base  
EAST



Areas in Acres	
Public Land	21837.49
Indian Reservation	
Indian Allotments	
Mineral Claims	
Water Surface	9426.5
<b>Total Area</b>	<b>22780.14</b>

Latitude 64° 46' 36" N.  
Longitude 147° 28' 21" W.  
Scale 40 Chains to an inch  
Mean Magnetic Declination

Surveys Designated	By Whom Surveyed	Contract		Amount of Surveys			When Surveyed	
		No.	Date	Mls.	chs.	lks.	Begun	Completed
E. W. and S. B'dys.	S. G. Lunde			18	59	22	Aug. 9, 1910	Sept. 29, 1910
N. B'dy.	W. N. Vance			1	51	19	Aug. 21, 1910	Aug. 22, 1910
W. and S. B'dys	W. H. Thorn			1	28	26	June 26, 1911	Sept. 28, 1911
Subdivisions	S. G. Lunde			5	75	20	Sept. 29, 1910	Oct. 3, 1910
Subdivisions	R. K. Crawford			15	74	65	Aug. 21, 1911	Oct. 13, 1911
Subdivisions	George S. Lewis			28	74	46	Aug. 21, 1911	Oct. 13, 1911
Subdivisions	W. H. Thorn			8	68	63	Aug. 21, 1911	Oct. 13, 1910
Meanders	S. G. Lunde			1	28	14	Oct. 5, 1910	Oct. 6, 1910
Meanders	W. H. Thorn			24	48	35	Aug. 21, 1911	Oct. 13, 1911

The above map of Township No. 1 South Range No. 1 East of the Fairbanks Meridian Alaska is strictly conformable to the field notes of the survey thereof on file in this office, which have been examined and approved

U. S. Surveyor General's Office.  
Juneau, Alaska, October 9, 1913.

*M. L. Dickinson*  
Surveyor General.

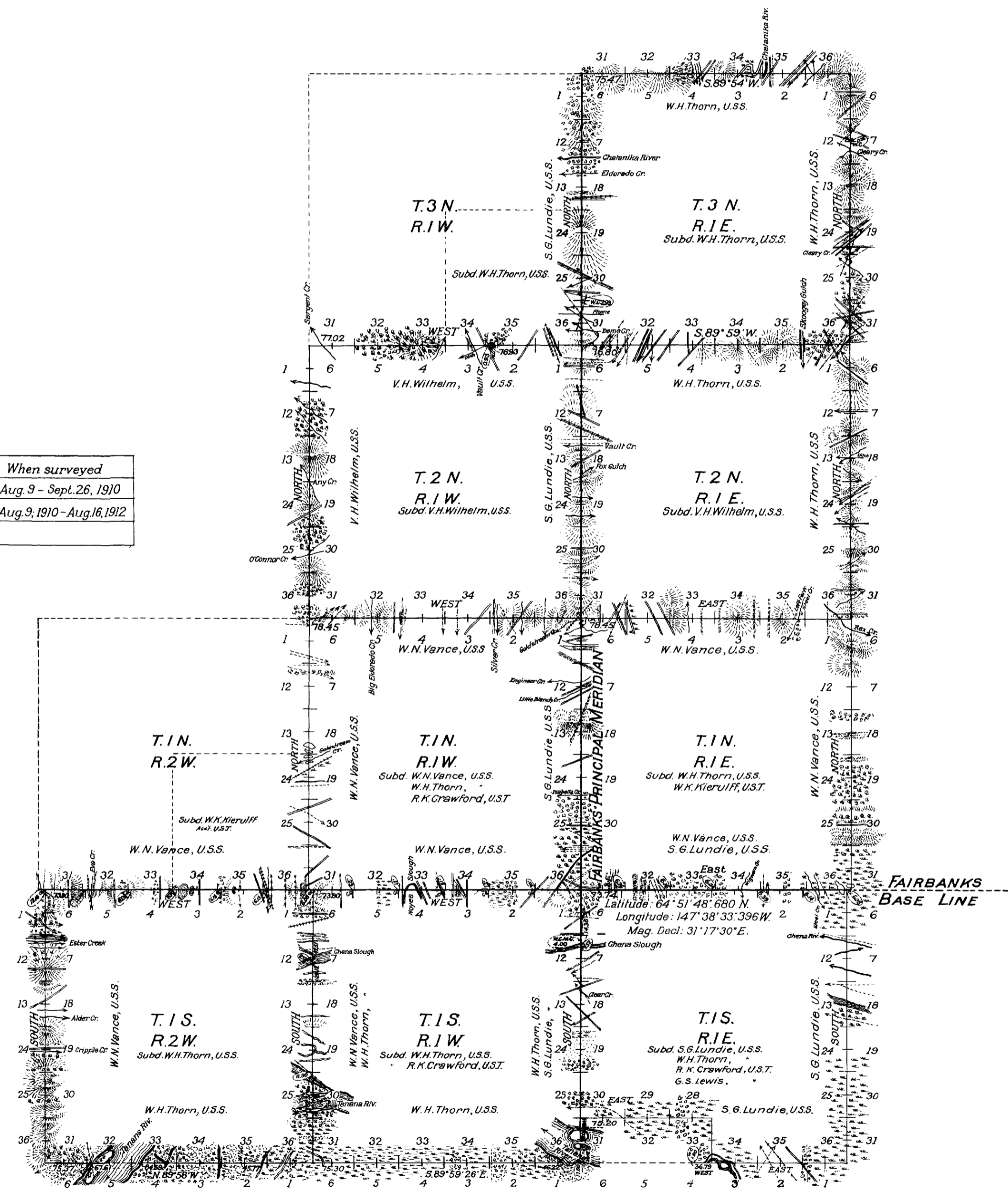
Topography and Calculations, M.G.

# TOWNSHIP EXTERIORS

Scale: 1 inch to 160 chains

**Table of Mileage**

Surv's designated	Amount	When surveyed
Standard Lines	24 00 00	Aug. 9 - Sept. 26, 1910
Township "	113 33 40	Aug. 9, 1910 - Aug. 16, 1912
Connections		



This PLAT of  
the EXTERIORS of  
Ts. 1S.-Rs. 1 & 2 W. and 1 E., T. 3 N.-R. 1 E. and  
Ts. 1 & 2 N.-R. 1 W. and 1 E. of the Fairbanks Base  
and Meridian in the Territory of Alaska is strictly  
conformable to the field notes of the survey thereof  
which have been examined, approved and are on  
file in this office.

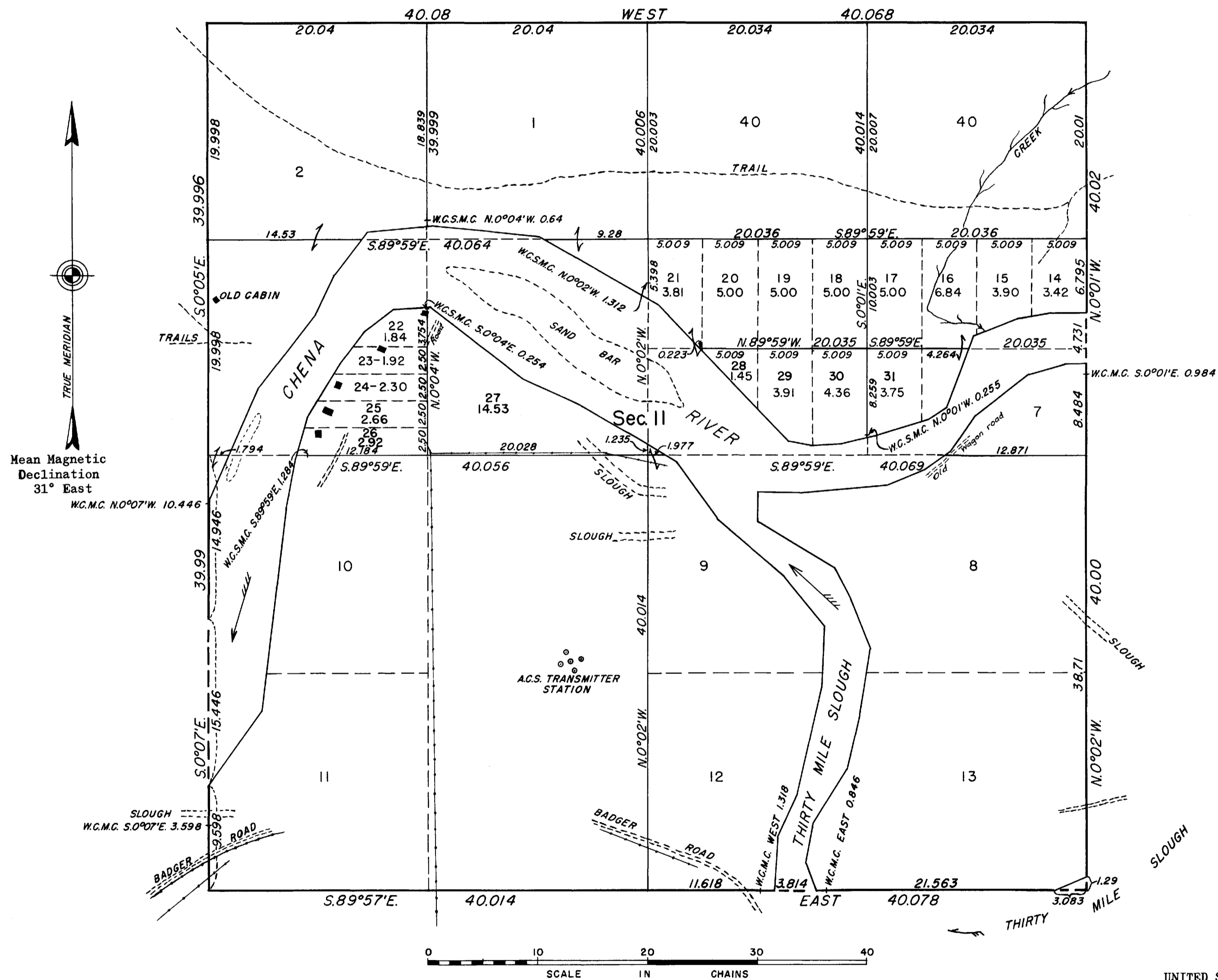
U.S. Surveyor General's Office

Juneau, Alaska, June 25, 1914

*Charles E. Davidson*  
U.S. Surv. General



TOWNSHIP 1 SOUTH, RANGE 1 EAST, OF THE FAIRBANKS MERIDIAN, ALASKA  
DEPENDENT RESURVEY AND SUBDIVISION OF SECTION 11



This plat represents a retracement and reestablishment of the section boundaries designed to restore the corners in their original locations and a subdivision of the section. The lottings and areas are as shown on the plat approved October 9, 1913, except as new areas are shown hereon.

Area resurveyed: 544.34 acres

Survey executed by Lloyd E. Toland July 5 to July 20, 1951, under Special Instructions for Group 49 Alaska, dated April 27, 1934.

UNITED STATES DEPARTMENT OF THE INTERIOR  
BUREAU OF LAND MANAGEMENT  
Washington, D. C., August 19, 1952

This plat is strictly conformable to the approved field notes, and the survey, having been correctly executed in accordance with the requirements of law and the regulations of this Bureau, is hereby accepted.

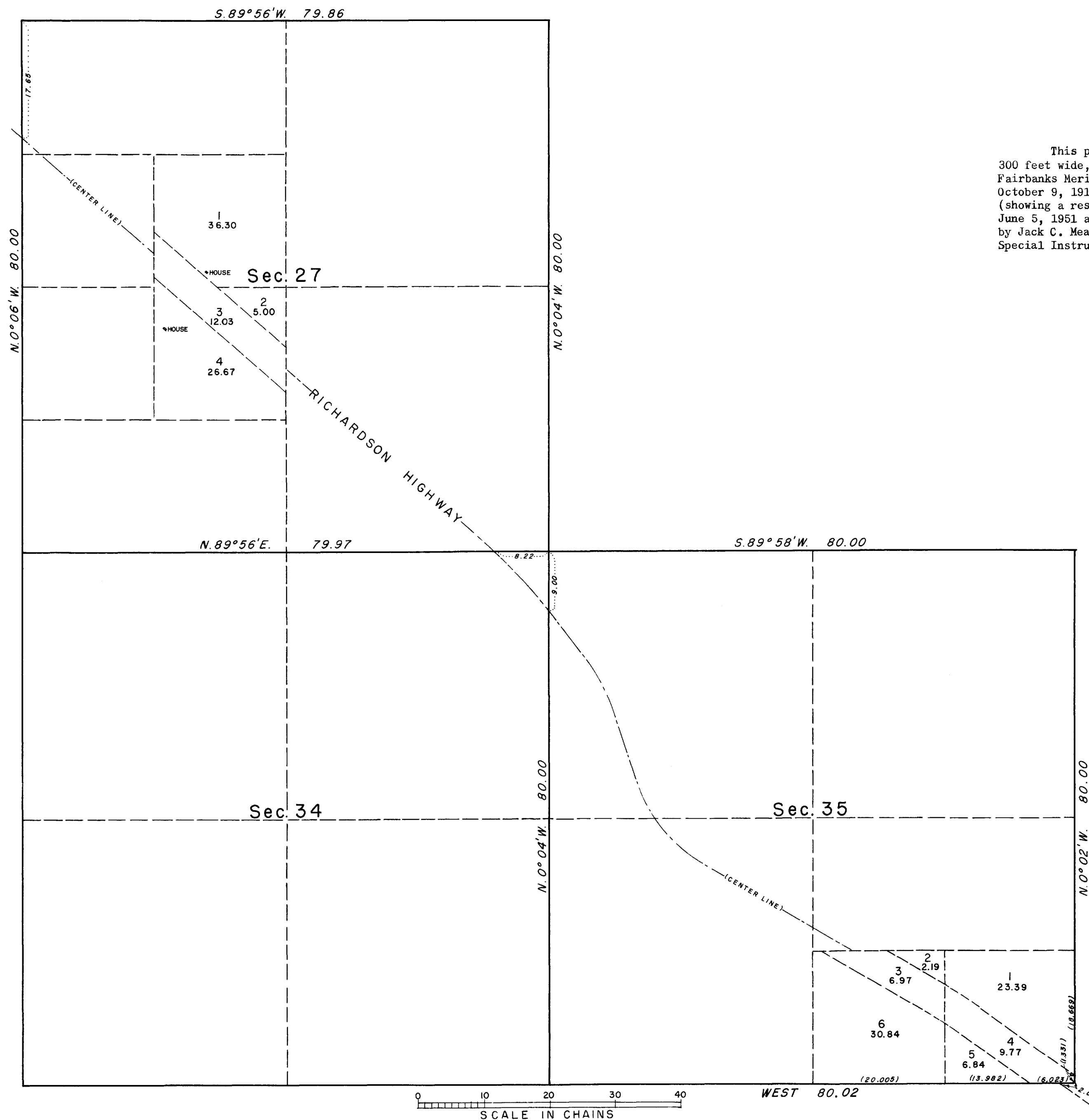
For the Director

*Donald Clement*  
Acting Chief, Division of  
Cadastral Engineering

P.E.C.

# TOWNSHIP 1 SOUTH, RANGE 1 EAST, OF THE FAIRBANKS MERIDIAN, ALASKA

## SEGREGATION OF THE RICHARDSON HIGHWAY RIGHT OF WAY



This plat, showing a segregation of Richardson Highway, 300 feet wide, in secs. 27 and 35, T. 1 S., R. 1 E., of the Fairbanks Meridian, Alaska, is based upon the plat approved October 9, 1913, the plat of T. 2 S., R. 1 E., Fairbanks Meridian, (showing a resurvey of the line between Tps. 1 and 2 South) accepted June 5, 1951 and the center line survey of Richardson Highway executed by Jack C. Means, Cartographer (Cadastral) August 20, 1952 under Special Instructions for Group 49, Alaska, dated April 27, 1934.

UNITED STATES DEPARTMENT OF THE INTERIOR  
BUREAU OF LAND MANAGEMENT  
Washington, D. C., December 2, 1953

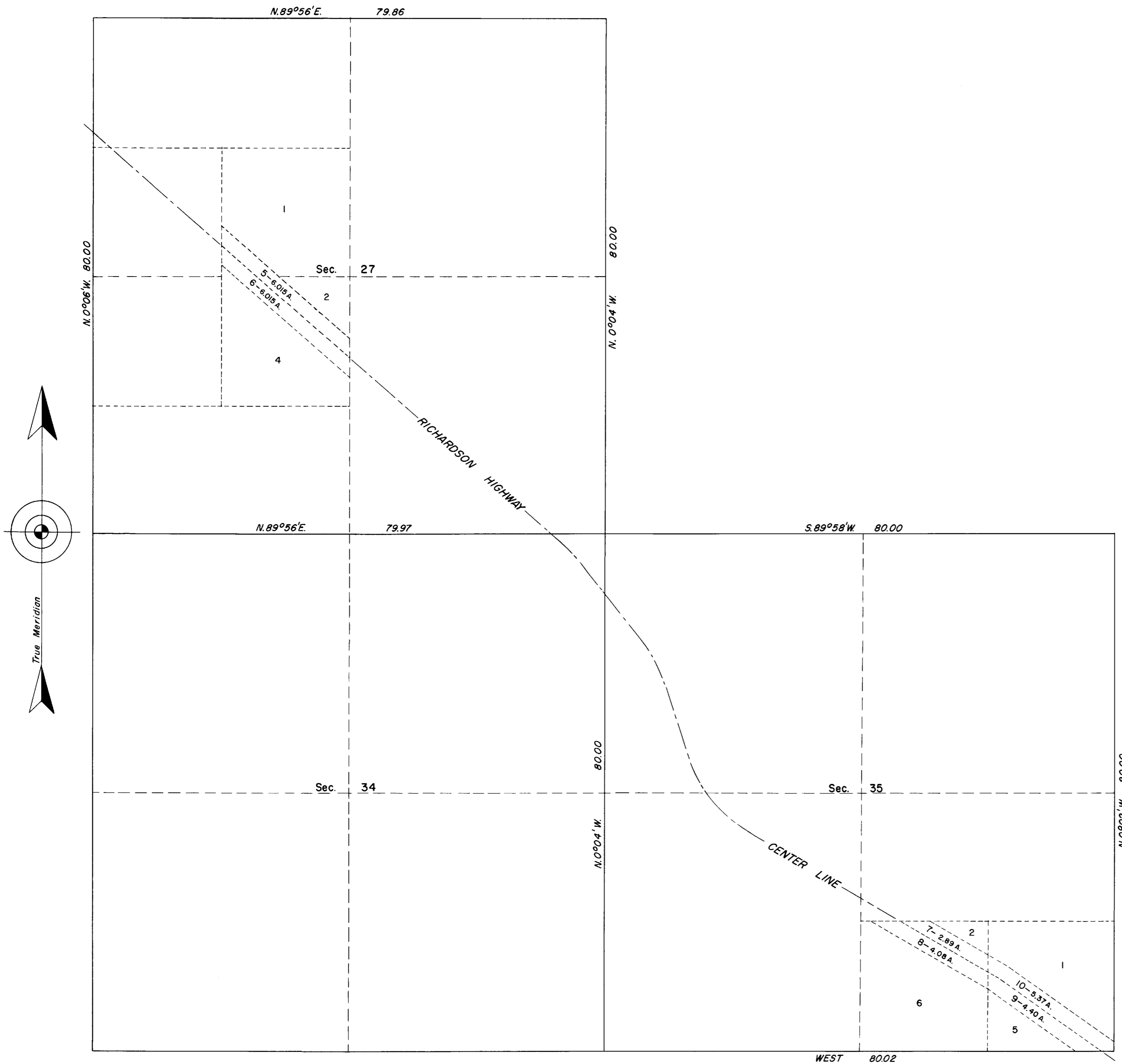
This plat is strictly conformable to the approved field notes, and the survey, having been correctly executed in accordance with the requirements of law and the regulations of this Bureau, is hereby accepted.

For the Director

Acting Chief, Division of  
Cadastral Engineering

# TOWNSHIP 1 SOUTH, RANGE 1 EAST, OF THE FAIRBANKS MERIDIAN, ALASKA

## SUPPLEMENTAL PLAT



This supplemental plat of Sections 27, 34 and 35, T. 1 S., R. 1 E., Fairbanks Meridian, Alaska, showing the amended lottings for the areas formerly designated as Lot 3, Section 27, and Lots 3 and 4, Section 35 is based upon the township plat approved October 9, 1913, the township plat accepted December 2, 1953.

UNITED STATES DEPARTMENT OF THE INTERIOR  
BUREAU OF LAND MANAGEMENT  
Washington, D.C. January 8, 1962

This plat, showing amended lottings, is based upon the official records, and having been correctly prepared in accordance with the regulations, is hereby accepted.

For the Director

Chief, Division of Engineering

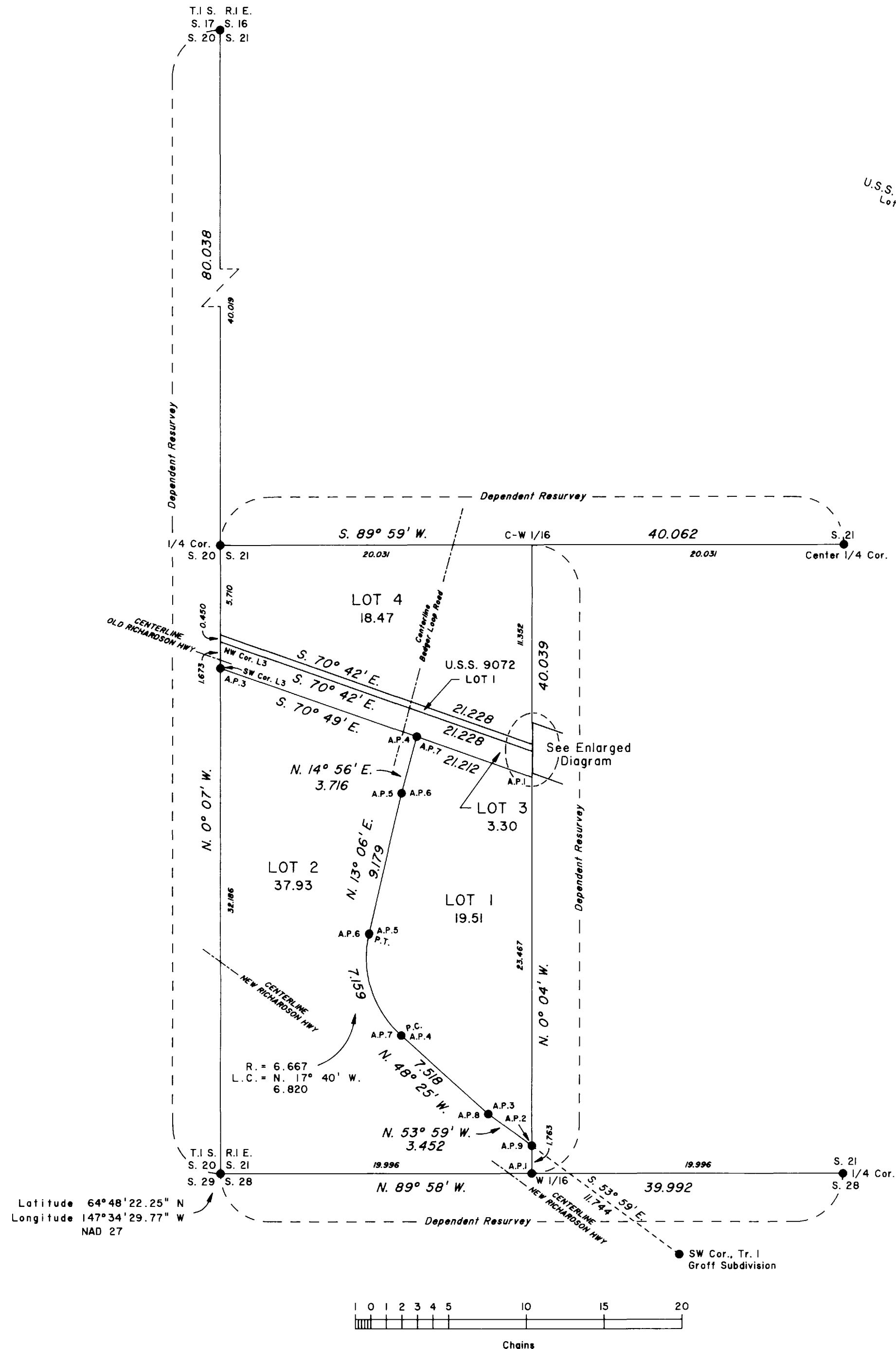
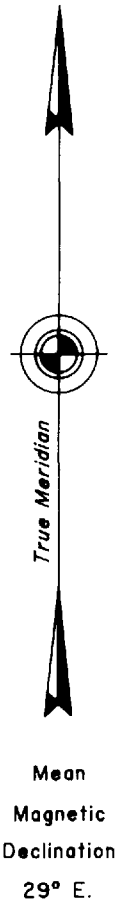
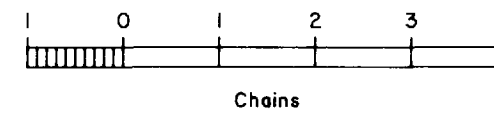
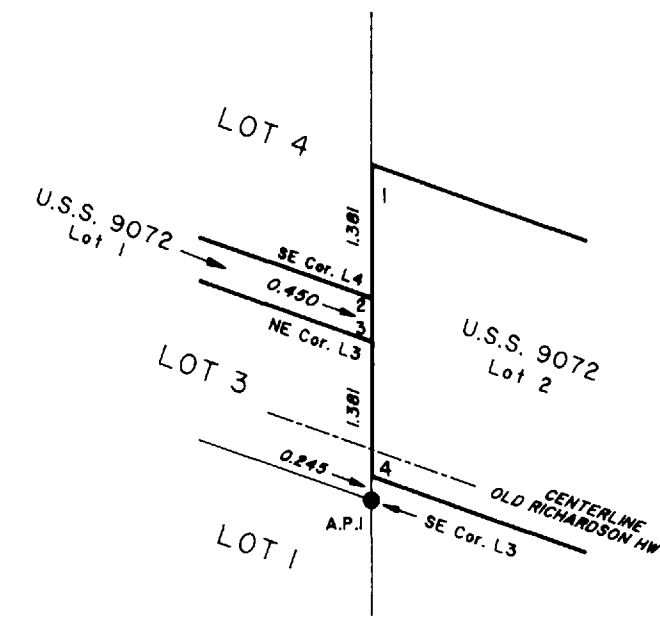
# TOWNSHIP 1 SOUTH, RANGE 1 EAST, OF THE FAIRBANKS MERIDIAN, ALASKA SECTION 21, SUBDIVISION

The history of surveys is contained in the field notes.

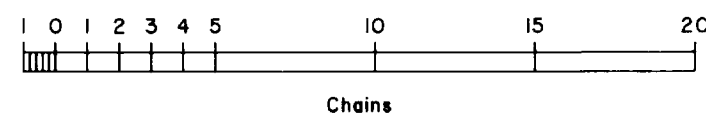
This plat and the field notes represent the dependent resurvey and subdivision of section 21, Township 1 South, Range 1 East, Fairbanks Meridian, Alaska, and the retracement of a portion of U.S. Survey No. 9072.

This survey was executed by Orrin K. Frederick, Cadastral Surveyor, August 9 through August 17, 1988, in accordance with the specifications set forth in the Manual of Surveying Instructions, 1973, Special Instructions dated June 8, 1988, approved August 5, 1988, approved August 5, 1988, and Assignment Instructions dated August 5, 1988, for Group No. 477, Alaska.

ENLARGED DIAGRAM



Latitude 64° 48' 22.25" N  
Longitude 147° 34' 29.77" W  
NAD 27



Acceptance of this survey does not purport to transfer any interest in submerged lands to which the State of Alaska is entitled under the Equal Footing Doctrine and Section 6(m) of the Alaska Statehood Act, P.L. 85-508, notwithstanding the use, location, or absence of meander lines to depict water bodies.

UNITED STATES DEPARTMENT OF THE INTERIOR  
BUREAU OF LAND MANAGEMENT  
Anchorage, Alaska

This plat is strictly conformable to the approved field notes, and the survey, having been executed in accordance with the requirements of law and the regulations of this Bureau, is hereby accepted.

For the Director

8 October 1993  
Date

Deputy State Director for Cadastral Survey, Alaska

Prot. Sheet F 9-4 BCA  
T1S, R1E, FM  
Sect 21