

NOTES:



100 Cushman Street,
Suite 501
Fairbanks, Alaska, 99701



1028 Aurora Drive, Fairbanks, Alaska 99709-5229

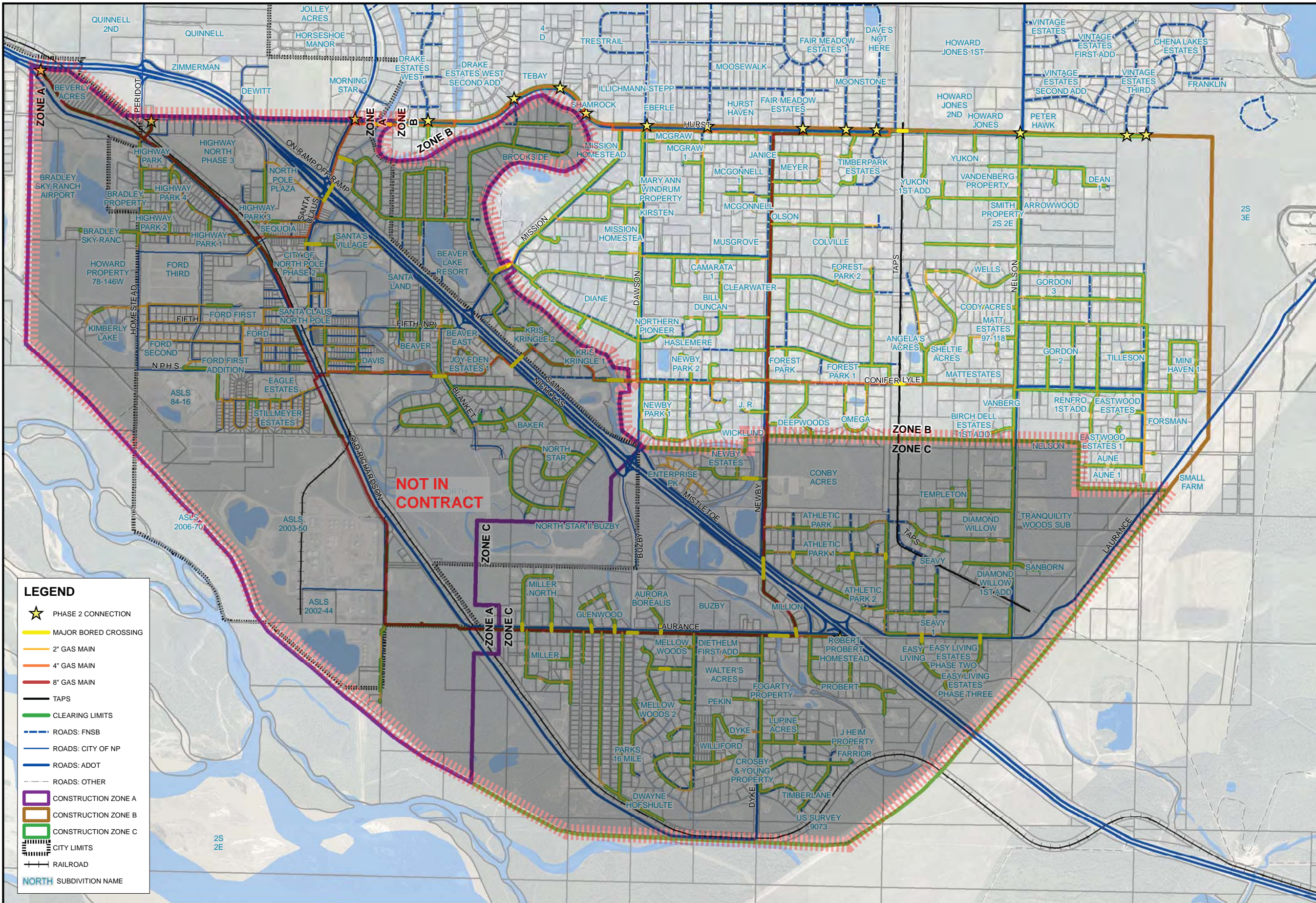


REVISIONS		
Rev. #	DATE	DESCRIPTION

SITE NAME:
CLEARING FOR DISTRIBUTION SYSTEM PHASE 1
NORTH POLE, ALASKA

DRAWING TITLE:
MAP INDEX

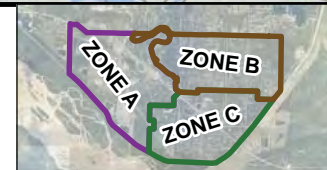
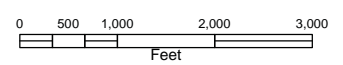
DRAWING NO:
G1.01



LEGEND

- ★ PHASE 2 CONNECTION
- MAJOR BORED CROSSING
- 2" GAS MAIN
- 4" GAS MAIN
- 8" GAS MAIN
- TAPS
- CLEARING LIMITS
- ROADS: FNSB
- ROADS: CITY OF NP
- ROADS: ADOT
- ROADS: OTHER
- CONSTRUCTION ZONE A
- CONSTRUCTION ZONE B
- CONSTRUCTION ZONE C
- CITY LIMITS
- RAILROAD
- NORTH SUBDIVISION NAME

NOTES:



100 Cushman Street,
Suite 501
Fairbanks, Alaska, 99701

1028 Aurora Drive, Fairbanks, Alaska 99709-5229



REVISIONS

Rev. #	DATE	DESCRIPTION

DESIGNED BY:	SCALE:
DRAWN BY:	AS SHOWN
CHECKED BY:	

SITE NAME:
CLEARING FOR DISTRIBUTION SYSTEM PHASE 1
NORTH POLE, ALASKA

DRAWING TITLE:
PROJECT OVERVIEW

DRAWING NO:
G1.02

ABBREVIATIONS

2" G	2" NATURAL GAS DISTRIBUTION MAIN
4" G	4" NATURAL GAS DISTRIBUTION MAIN
8" G	8" NATURAL GAS DISTRIBUTION MAIN
ADOT	ALASKA DEPARTMENT OF TRANSPORTATION
BRK	BREAKLINE
C	COMMUNICATIONS UTILITIES
CC	CONCRETE
CULV INV	CULVERT INVERT
EOP	EDGE OF PAVEMENT
EOW	EDGE OF WATER
F	FIBER OPTIC CABLE
FNSB	FAIRBANKS NORTH STAR BOUROUGH
GRND	GROUND ELEVATION
HDD	HORIZONTAL DIRECTIONAL DRILLING
OH C	OVERHEAD COMMUNICATIONS UTILITIES
OH P	OVERHEAD POWER UTILITIES
P	POWER UTILITIES
S	SEWER UTILITIES
W	WATER UTILITIES
CUE	COMBINED USE UTILITY EASEMENTS
PUE	PUBLIC USE UTILITY EASEMENTS
RUE	RESTRICTED USE UTILITY EASEMENTS
RAWE	ROADWAY/ACCESS/PEDESTRIAN/WALKWAY EASEMENTS
SLE	SECTION LINE EASEMENT
TOE	TOE OF BANK ELEVATION
TOP	TOP OF BANK ELEVATION
DOT ROW	DEPARTMENT OF TRANSPORTATION RIGHT OF WAY
RR ROW	RAILROAD RIGHT OF WAY
TAPS	TRANS ALASKA PIPELINE
10" TRG	10" FUTURE GAS TRANSMISSION LINE
WD	ELEVATION UNDER WATER

LEGEND

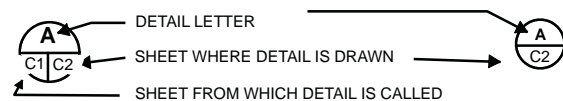
Existing

	Data Frames		Private Roads	Communications Utilities	Easements
	City of North Pole		RR		Aboveground
	Lot Lines	Other Utilities			Combined Utility Easements
	OldRich-ROW		Sewer		Public Utility Easements
	OldRich-RR-ROW		Abandoned Sewer		Fiber
	ROW		Water	Power Utilities	
	Bike Path CL		Canol Pipeline		Aboveground
	Bike Path Edge		Haines to Fairbanks Pipeline		Underground
					Restricted Utility Easements
					Section Line Easements

Proposed

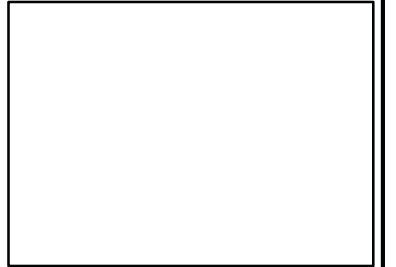
Natural Gas Lines		HDD End Points	
	10" Transmission Gas		HDD Crossings
	2" Diameter Gas Distribution Main		New Easements
	4" Diameter Gas Distribution Main		Clearing Limits
	8" Diameter Gas Distribution Main		Construction Zone A
	Phase 2 Connection Points		Construction Zone B
			Construction Zone C

DETAIL IDENTIFICATION



GENERAL NOTES:

- NATURAL GAS DISTRIBUTION MAIN SHALL BE 5' INSIDE THE ROW BOUNDARY (STANDARD CONDITION) UNLESS OTHERWISE NOTED. GAS LINE SHALL BE NO CLOSER THAN 5' TO THE ROW BOUNDARY.**
- A CORRIDOR (OFFSET SO THAT DISTRIBUTION MAIN IS WITHIN 5' OF ONE EDGE) WILL BE CLEARED ALONG GAS DISTRIBUTION MAINS.
 - * 2" MAIN: 15' WIDE CORRIDOR
 - * 4" MAIN: 20' WIDE CORRIDOR
 - * 8" MAIN: 20' WIDE CORRIDOR
- CLEARING INDICATED ON DRAWINGS IS FROM INTERPRETATION OF AERIAL IMAGERY USING THE COMPILED BASEMAP AS THE BASIS FOR DISTRIBUTION MAIN ALIGNMENT. ACTUAL CLEARING REQUIRED WILL BE DIFFERENT ONCE ROW/EASEMENTS ARE LOCATED BY CONTRACTOR IN THE FIELD AND CLEARING LIMITS ARE FLAGGED. OWNER WILL REVIEW CLEAR FLAGGING AND ROW/EASEMENT STAKING PRIOR TO CLEARING.
- EXTEND CLEARING FOR DISTRIBUTION MAIN 15' PAST THE PROPERTY CORNER OF THE LAST PROPERTY BEING SERVED, AS SHOWN IN C4.01-C4.210.
- THE BACKGROUND MAP INFORMATION PRESENTED IN THESE DOCUMENTS IS A COMPILATION OF SYSTEM MAP INFORMATION FROM UTILITIES AND PROPERTY INFORMATION FROM THE FNSB ADJUSTED TO IMPROVE THE FIT TO LIMITED FIELD SURVEY TIES AND RECORDED ADOT RIGHT-OF-WAY MAPS OVERLAID OVER THE FNSB AERIAL IMAGERY.** THIS COMPILATION IS NOT A TOPOGRAPHIC SURVEY AND WAS ONLY INTENDED TO INDICATE THE WORK EFFORT TO THE CONTRACTOR AND ALLOW THEM TO IDENTIFY POTENTIAL UTILITY CONFLICTS ALONG THE ROUTE. THE CONTRACTOR IS RESPONSIBLE FOR COORDINATING THE LOCATES OF ALL UTILITIES ALONG THE PIPE ALIGNMENT, AVOIDING OR COORDINATING CONFLICTS, AND RESTORATION OF ITEMS DISTURBED ALONG THE ROUTE TO PRE-EXISTING CONDITIONS OR BETTER.
- CALL THE DIG LINE (1-907-459-6400) AS WELL AS:
 - * ADOT (STREET LIGHTS, ETC)
 - * US ARMY CORP ENGINEERS (HAINES TO FAIRBANKS, CANOL PIPELINES)
 - * CITY OF NORTH POLE
 - * GVEA PIPELINES (FROM TAPS TO REFINERY)
 - * GVEA DISPATCH (WHEN WORKING NEAR POWER LINES)
 PRIOR TO BEGINNING CONSTRUCTION.



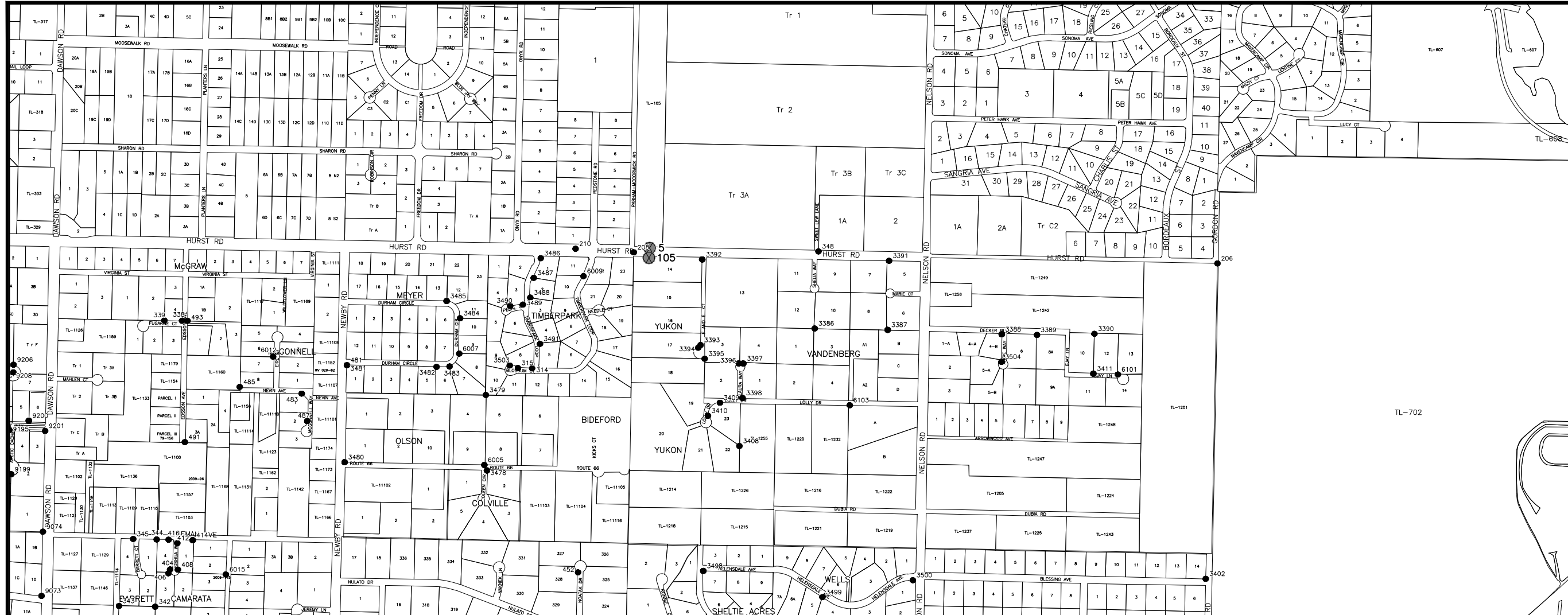
REVISIONS		
Rev. #	DATE	DESCRIPTION

DESIGNED BY:	SCALE:
DRAWN BY:	AS SHOWN
CHECKED BY:	

SITE NAME:
CLEARING FOR DISTRIBUTION SYSTEM PHASE 1
 NORTH POLE, ALASKA

DRAWING TITLE:
LEGEND AND NOTES

DRAWING NO:
G2.01



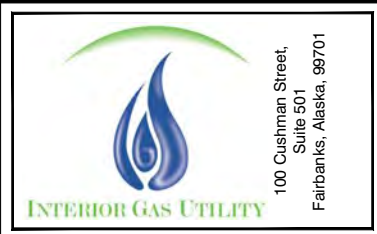
RECOVERED MONUMENTS WITH METER LEVEL SEARCH COORDINATES

POINT #	NORTHING	EASTING	DESCRIPTION
206	3935015.62	1446702.75	Found 3.5" Brass Cap
208	3935116.41	1441406.67	Found 3.25" Brass Cap
210	3935148.77	1440877.98	Found 2" Rebar Cap 9327-S-S
314	3934063.56	1440483.86	Found 1.5" Rebar Cap 4473-S
315	3934066.32	1440354.75	Found 1.5" Rebar Cap 4473-S
338	3934495.11	1437306.71	Found 3.5" Aluminum Monument
339	3934498.41	1437146.89	Found 1.5" Aluminum Monument
342	3931899.73	1437063.17	Found 3.5" Aluminum Monument
343	3931906.36	1436735.52	Found 3.5" Aluminum Monument
344	3932510.00	1437076.84	Found 3.5" Aluminum Monument
345	3932514.13	1436864.34	Found 1.5" Aluminum Monument
348	3935124.72	1443082.51	Found 1.5" Aluminum Monument
404	3932237.88	1437198.67	Found 2.5" Aluminum Monument
406	3932202.68	1437183.38	Found 2.5" Aluminum Monument
408	3932236.20	1437269.32	Found 2.5" Aluminum Monument
412	3932476.25	1437264.25	Found 2.5" Aluminum Monument
414	3932503.47	1437404.12	Found Rebar
416	3932507.90	1437185.40	Found 2.5" Aluminum Monument
452	3932211.54	1440900.33	Found 1.5" Aluminum Monument
481	3934092.17	1438803.51	Found 1.5" Aluminum Monument
483	3933834.00	1438393.59	Found 1.5" Aluminum Monument
485	3933894.80	1437830.60	Found 3.5" Aluminum Monument
487	3933584.38	1438443.10	Found 1.5" Aluminum Monument
489	3933211.30	1438782.47	Found 1.5" Aluminum Monument

POINT #	NORTHING	EASTING	DESCRIPTION
491	3933393.78	1437332.66	Found 2" Aluminum Monument
493	3934494.26	1437357.02	Found 1.5" Aluminum Monument
3386	3934424.87	1443048.47	Found 2" Aluminum Monument
3387	3934412.39	1443710.78	Found Rebar
3388	3934372.34	1444745.51	Found Rebar
3389	3934366.42	1445065.41	Found 1.5" Aluminum Monument
3390	3934376.78	1445586.47	Found 1.5" Aluminum Monument
3391	3935039.53	1443723.12	Found 2" Aluminum Monument
3392	3935051.68	1442027.76	Found Rebar
3393	3934274.52	1442012.34	Found 1.5" Aluminum Monument
3394	3934250.41	1441991.90	Found 1.5" Aluminum Monument
3395	3934150.39	1442049.86	Found 3.25" Aluminum Monument
3396	3934108.05	1442360.22	Found Rebar
3397	3934107.09	1442400.16	Found Rebar
3398	3933794.25	1442392.63	Found Rebar
3402	3932152.97	1446596.15	Found 1.5" Rebar Cap 705-S
3408	3933358.27	1442364.86	Found 1.5" Aluminum Monument
3409	3933751.02	1442188.87	Found 1.5" Aluminum Monument
3410	3933632.68	1442079.45	Found 1.5" Aluminum Monument
3411	3934015.10	1445576.76	Found Rebar
3478	3933136.18	1440074.02	Found Rebar
3479	3933821.53	1440064.04	Found 1.5" Rebar Cap 705-S
3480	3933211.29	1438782.39	Found 1.5" Rebar Cap 705-S
3481	3934092.15	1438803.47	Found 1.5" Rebar Cap 3239-S

POINT #	NORTHING	EASTING	DESCRIPTION
3482	3934076.48	1439616.29	Found 1.5" Rebar Cap 3239-S
3483	3934080.47	1439734.78	Found 1.5" Rebar Cap 3239-S
3484	3934517.77	1439830.45	Found 1.5" Rebar Cap 3239-S
3485	3934673.96	1439708.50	Found Rebar
3486	3935062.49	1440562.16	Found 1.5" Rebar Cap 4473-S
3487	3934884.44	1440498.39	Found 1.5" Rebar Cap 4473-S
3488	3934705.27	1440467.32	Found 1.5" Rebar Cap 4473-S
3489	3934641.64	1440399.74	Found 1.5" Rebar Cap 4473-S
3490	3934630.31	1440284.42	Found 1.5" Rebar Cap 4473-S
3491	3934285.44	1440555.64	Found 1.5" Rebar Cap 4473-S
3497	3931801.62	1442162.22	Found 1.5" Rebar Cap 3239-S
3498	3932224.14	1442036.98	Found Rebar
3499	3931986.36	1443118.40	Found 1.5" Rebar Cap 4473-S
3500	3932140.05	1443938.56	Found 1.5" Rebar Cap 4473-S
3503	3934089.10	1440280.76	Found 1.5" Rebar Cap 4473-S
3504	3934122.84	1444743.56	Found Rebar
6005	3933186.41	1440050.35	Found 1.5" Rebar Cap 705-S
6007	3934196.91	1439822.60	Found 1.5" Rebar Cap 3239-S
6009	3934900.24	1440949.90	Found 1.5" Aluminum Monument
6012	3934169.38	1438133.78	Found Illegible" Rebar Cap
6015	3932192.06	1437704.80	Found 8410-S" Rebar Cap
6101	3934007.54	1445799.77	Found 1.5" Rebar Cap 3776-S
6103	3933728.60	1443366.09	Found 1.5" Rebar Cap 705-S
9073	3931997.76	1436032.06	Found 1.5" Aluminum Monument

POINT #	NORTHING	EASTING	DESCRIPTION
9074	3932580.59	1436044.66	Found 1" Rebar Cap RLS
9195	3933502.43	1435739.84	Found 1" Rebar Cap RLS
9196	3933253.33	1435734.31	Found 1" Rebar Cap RLS
9197	3933232.26	1435722.00	Found Rebar
9199	3933101.93	1435756.02	Found Rebar
9200	3933588.52	1435916.80	Found Rebar
9201	3933495.36	1436064.76	Found 1" Rebar Cap RLS
9206	3934096.45	1435777.91	Found 1" Rebar Cap RLS
9208	3934026.69	1435776.44	Found 2.5" Brass Cap



100 Cushman Street,
Suite 501
Fairbanks, Alaska, 99701



1028 AURORA DRIVE, FAIRBANKS, ALASKA 99709-5529

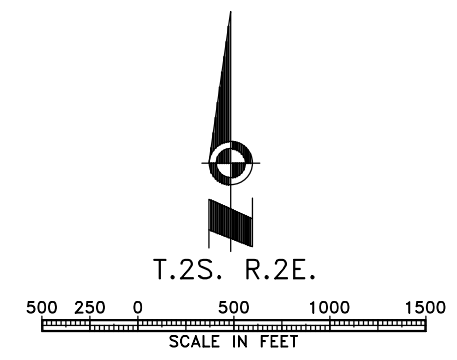
REVISIONS		
REV. #	DATE	DESCRIPTION

DESIGNED BY: D.B. SCALE: 1" = 500'
DRAWN BY: C.K.
CHECKED BY:

SITE NAME:
CLEARING FOR DISTRIBUTION SYSTEM PHASE 1 NORTH POLE, ALASKA

DRAWING TITLE:
SURVEY CONTROL

DRAWING NO.:
V1.03



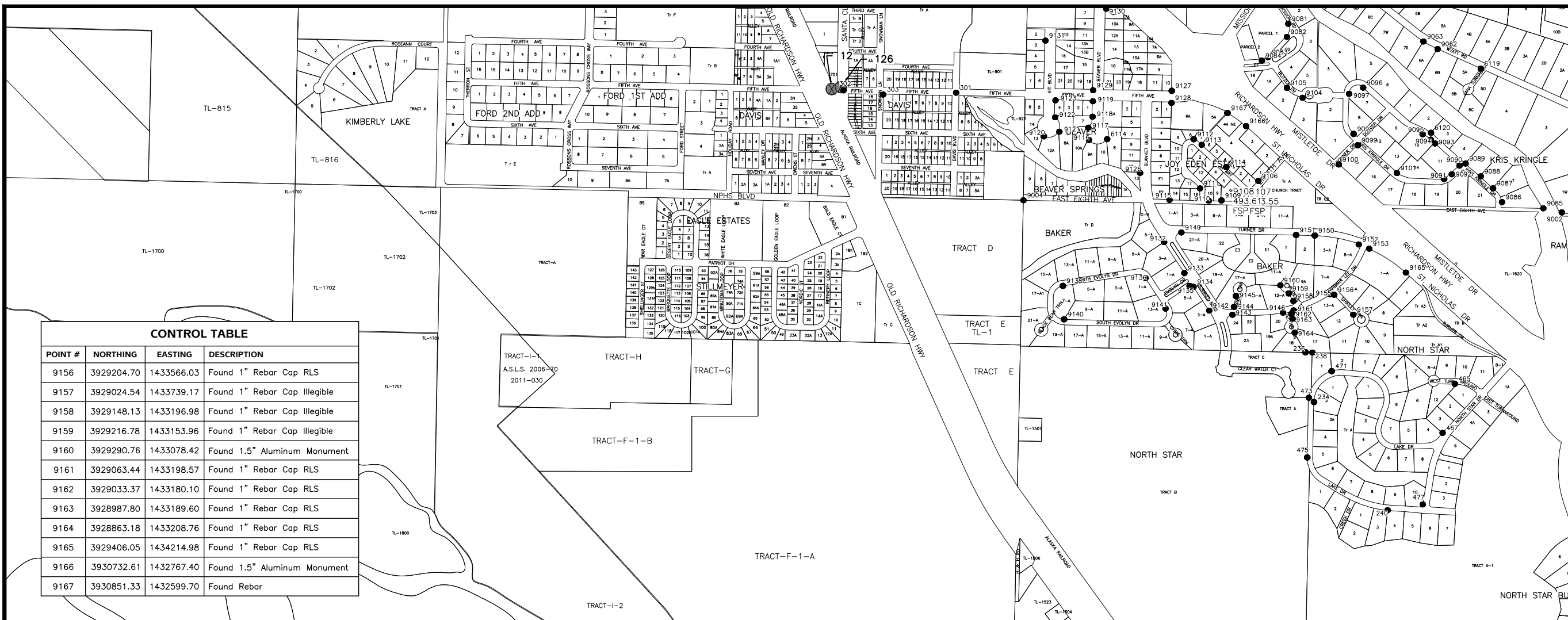
P:\2014\FAIRBANKS\HOLPHILL\SUBSET\14081181.DWG Phase 1 Survey Control.dwg SDD_SHEET 3 Dec 29, 2014 12:32 PM



100 Cushman Street,
Suite 501
Fairbanks, Alaska, 99701



PDC INC. ENGINEERS
1028 AURORA DRIVE, FAIRBANKS, ALASKA 99709-5529



CONTROL TABLE

POINT #	NORTHING	EASTING	DESCRIPTION
9156	3929204.70	1433566.03	Found 1" Rebar Cap RLS
9157	3929024.54	1433739.17	Found 1" Rebar Cap Illegible
9158	3929148.13	1433196.98	Found 1" Rebar Cap Illegible
9159	3929216.78	1433153.96	Found 1" Rebar Cap Illegible
9160	3929290.76	1433078.42	Found 1.5" Aluminum Monument
9161	3929063.44	1433198.57	Found 1" Rebar Cap RLS
9162	3929033.37	1433180.10	Found 1" Rebar Cap RLS
9163	3928987.80	1433189.60	Found 1" Rebar Cap RLS
9164	3928863.18	1433208.76	Found 1" Rebar Cap RLS
9165	3929406.05	1434214.98	Found 1" Rebar Cap RLS
9166	3930732.61	1432767.40	Found 1.5" Aluminum Monument
9167	3930851.33	1432599.70	Found Rebar

RECOVERED MONUMENTS WITH METER LEVEL SEARCH COORDINATES

CONTROL TABLE

POINT #	NORTHING	EASTING	DESCRIPTION
234	3928233.84	1433382.63	Found Rebar
236	3928684.44	1433306.17	Found Rebar
238	3928682.08	1433367.89	Found 1.5" Rebar Cap
240	3927254.36	1434049.87	Found " Aluminum Monument
301	3931034.40	1430142.97	Found 2.5" Brass Cap
302	3931055.66	1429123.23	Found 2.5" Aluminum Monument
303	3931018.20	1429482.44	Found 2" Brass Cap
465	3928398.15	1434658.47	Found 1.5" Aluminum Monument
467	3927954.36	1434547.38	Found 1.5" Aluminum Monument
471	3928514.08	1433543.06	Found Rebar
473	3928273.00	1433336.46	Found 1.5" Aluminum Monument
475	3927732.09	1433321.82	Found Rebar
477	3927306.81	1434367.96	Found 1.5" Rebar Cap 551
6114	3930614.57	1431510.59	Found " Iron Pipe
6119	3931253.16	1434892.91	Found 1.5" Rebar Cap 705-S
6120	3930671.91	1434442.19	Found 1.5" Rebar Cap
9002	3929950.84	1435626.76	Found 2.5" Brass Cap
9004	3930060.66	1430752.48	Found 3.25" Aluminum Monument
9062	3931429.76	1434502.51	Found 1.5" Aluminum Monument
9063	3931497.91	1434373.92	Found 1.5" Aluminum Monument
9081	3931658.75	1433149.81	Found 1" Rebar Cap RLS
9082	3931540.04	1433137.38	Found 1" Rebar Cap RLS
9083	3931356.51	1432968.76	Found 2.5" Rebar Cap No.
9084	3931325.47	1432911.58	Found 2" Aluminum Monument

CONTROL TABLE

POINT #	NORTHING	EASTING	DESCRIPTION
9085	3929987.87	1435459.59	Found 1.5" Aluminum Monument
9086	3930044.18	1435085.26	Found 1.5" Aluminum Monument
9087	3930168.79	1435004.02	Found 1.5" Aluminum Monument
9088	3930276.84	1434892.63	Found 1.5" Aluminum Monument
9089	3930393.16	1434755.32	Found 1.5" Aluminum Monument
9090	3930374.14	1434701.44	Found 1.5" Aluminum Monument
9091	3930252.62	1434561.53	Found 1.5" Aluminum Monument
9092	3930295.91	1434630.88	Found 1.5" Aluminum Monument
9093	3930575.17	1434478.96	Found 1.5" Aluminum Monument
9094	3930609.59	1434440.76	Found 1.5" Aluminum Monument
9095	3930658.29	1434366.99	Found 1.5" Aluminum Monument
9096	3931080.18	1433828.00	Found 1.5" Aluminum Monument
9097	3931024.59	1433700.99	Found 1.5" Aluminum Monument
9098	3930660.92	1433741.52	Found Rebar
9099	3930558.98	1433780.10	Found Rebar
9100	3930384.41	1433608.07	Found 1.5" Aluminum Monument
9101	3930306.84	1434133.66	Found 1.5" Aluminum Monument
9104	3930988.51	1433279.67	Found 1" Rebar Cap RLS
9105	3931078.29	1433138.07	Found 1" Rebar Cap RLS
9106	3930235.44	1432878.40	Found 2" Aluminum Monument
9107	3930050.43	1432698.80	FSP
9108	3930054.33	1432546.72	FSP
9109	3930059.10	1432544.90	Found Rebar
9110	3930056.83	1432429.95	Found 1.5" Aluminum Monument

CONTROL TABLE

POINT #	NORTHING	EASTING	DESCRIPTION
9111	3930168.13	1432351.32	Found 1.5" Aluminum Monument
9112	3930613.85	1432293.94	Found Rebar
9113	3930562.48	1432366.39	Found 1.5" Aluminum Monument
9114	3930361.69	1432588.66	Found Rebar
9115	3930064.37	1432075.03	Found 1.5" Aluminum Monument
9116	3930606.88	1431344.78	Found 1.5" Aluminum Monument
9117	3930717.99	1431339.69	Found 1.5" Aluminum Monument
9118	3930817.22	1431378.32	Found 1.5" Aluminum Monument
9119	3930957.34	1431381.01	Found 1.5" Aluminum Monument
9120	3930640.10	1430936.45	Found Rebar
9121	3930681.25	1431077.35	Found 2" Aluminum Monument
9122	3930811.46	1431039.36	Found 2" Aluminum Monument
9123	3930965.55	1431042.54	Found 2" Aluminum Monument
9126	3930308.41	1431808.24	Found 1" Rebar Cap RLS
9127	3931051.49	1432095.00	Found Rebar
9128	3930942.02	1432092.93	Found 2.5" Brass Cap
9129	3931057.30	1431383.07	Found 2" Aluminum Monument
9130	3931794.87	1431502.16	Found 2.5" Rebar Cap COR
9131	3931506.22	1430951.42	Found 1.5" Aluminum Monument
9132	3929682.35	1432025.65	Found 1" Rebar Cap RLS
9133	3929401.71	1432209.28	Found 1" Rebar Cap RLS
9134	3929277.38	1432292.17	Found 1" Rebar Cap RLS
9135	3929284.10	1432257.39	Found Rebar
9136	3929356.10	1431857.22	Found 1" Rebar Cap RLS

CONTROL TABLE

POINT #	NORTHING	EASTING	DESCRIPTION
9138	3929285.25	1431109.25	Found Rebar
9140	3928982.92	1431120.44	Found Rebar
9141	3929080.27	1432038.65	Found 1" Rebar Cap RLS
9142	3929061.62	1432433.91	Found 1" Rebar Cap RLS
9143	3929023.90	1432644.54	Found 1" Rebar Cap RLS
9144	3929095.27	1432658.56	Found 1" Rebar Cap RLS
9145	3929194.01	1432674.94	Found 1" Rebar Cap RLS
9146	3929043.15	1433102.45	Found 1" Rebar Cap RLS
9149	3929769.00	1432182.02	Found 1" Rebar Cap RLS
9150	3929741.68	1433390.05	Found Rebar
9151	3929746.37	1433221.21	Found Rebar
9152	3929660.55	1433788.21	Found 1" Rebar Cap RLS
9153	3929622.56	1433882.65	Found 1" Rebar Cap RLS
9155	3929210.11	1433531.70	Found 1" Rebar Cap RLS

REVISIONS

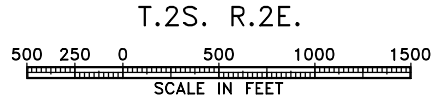
REV. #	DATE	DESCRIPTION

DESIGNED BY: D.B. SCALE:
DRAWN BY: C.K. 1" = 500'
CHECKED BY:

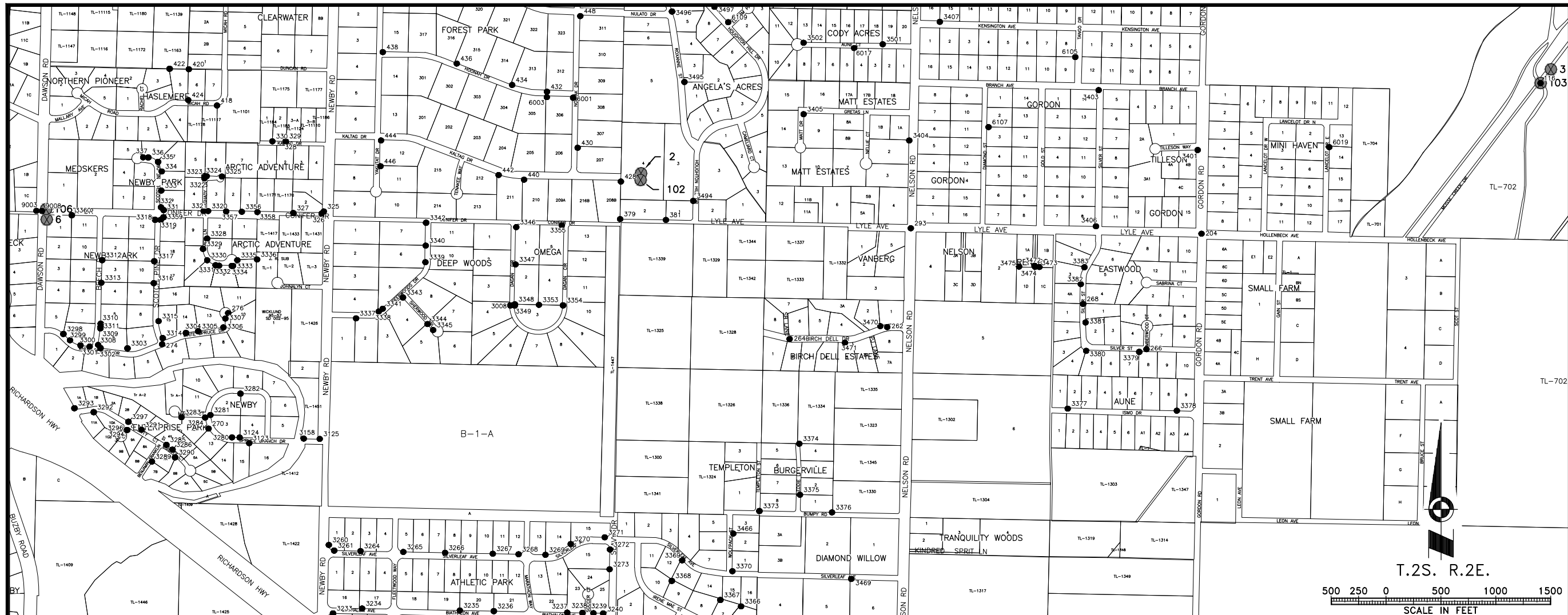
SITE NAME:
CLEARING FOR DISTRIBUTION SYSTEM PHASE 1 NORTH POLE, ALASKA

DRAWING TITLE:
SURVEY CONTROL

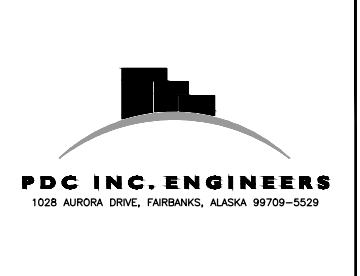
DRAWING NO.:
V1.04



P:\2014\FAIRBANKS\1408118\1408118.dwg Phase 1 Survey Control.dwg SDD SHEET 4 Dec 29, 2014 12:35 PM



100 Cushman Street,
Suite 501
Fairbanks, Alaska, 99701



1028 AURORA DRIVE, FAIRBANKS, ALASKA 99709-5529

RECOVERED MONUMENTS WITH METER LEVEL SEARCH COORDINATES

POINT #	NORTHING	EASTING	DESCRIPTION
116	3931105.72	1449685.65	Found 2" Rebar Cap In
204	3929734.32	1446598.22	Found 2.5" Aluminum Monument
262	3928883.29	1443735.70	Found 1.5" Rebar Cap 705-S
264	3928775.31	1442846.60	Found 3.5" Aluminum Monument
266	3928681.61	1446096.88	Found " Aluminum Monument
268	3929094.10	1445520.47	Found 3.25" Rebar Cap 3239-S
270	3927958.67	1437554.58	Found 3.25" Aluminum Monument
272	3928277.30	1437845.06	Found 1.5" Rebar Cap 3246
274	3928726.87	1437132.12	Found 1.5" Rebar Cap 3246
276	3929011.11	1437733.46	Found 3.25" Aluminum Monument
293	3929783.98	1443950.57	Found 3.25" Aluminum Monument
325	3929937.38	1438604.38	Found 1.5" Aluminum Monument
326	3929918.06	1438583.96	Found 1.5" Aluminum Monument
327	3929922.86	1438326.92	Found 1.5" Aluminum Monument
328	3930573.28	1438256.95	Found 1.5" Aluminum Monument
329	3930578.22	1438257.08	Found 1.5" Aluminum Monument
330	3930575.85	1438136.08	Found 1.5" Aluminum Monument
331	3929949.83	1437145.52	Found Rebar
332	3929975.31	1437121.35	Found 1.5" Aluminum Monument
333	3930127.50	1437124.51	Found 1.5" Aluminum Monument
334	3930301.38	1437128.08	Found 1.5" Aluminum Monument
335	3930388.92	1437094.81	Found Rebar
336	3930428.81	1437005.89	Found Rebar
337	3930429.85	1436959.08	Found 2" Iron Pipe

POINT #	NORTHING	EASTING	DESCRIPTION
379	3929867.38	1441303.47	Found 1.5" Aluminum Monument
381	3929859.57	1441720.51	Found LS" Rebar Cap 6474
418	3930902.43	1437631.63	Found 1.5" Aluminum Monument
420	3931232.80	1437375.23	Found 1.5" Aluminum Monument
422	3931236.85	1437200.28	Found Rebar
424	3930952.47	1437368.88	Found 1.5" Aluminum Monument
428	3930209.34	1441310.16	Found 1.5" Aluminum Monument
430	3930517.18	1440916.32	Found 1.5" Aluminum Monument
432	3931027.95	1440636.86	Found 1.5" Aluminum Monument
434	3931089.37	1440319.62	Found 1.5" Aluminum Monument
436	3931284.27	1439815.44	Found 1.5" Aluminum Monument
438	3931388.52	1439141.66	Found 1.5" Aluminum Monument
440	3930226.37	1440428.12	Found 1.5" Aluminum Monument
442	3930269.05	1440196.57	Found 1.5" Aluminum Monument
444	3930583.92	1439125.48	Found 1.5" Aluminum Monument
446	3930349.00	1439120.81	Found 1.5" Aluminum Monument
448	3931716.93	1440940.26	Found 1.5" Aluminum Monument
3008	3929080.87	1440303.72	Found Rebar
3123	3927825.90	1437924.67	Found 1.5" Rebar Cap 6474
3124	3927877.46	1437837.84	Found 1.5" Rebar Cap 3246
3125	3927864.74	1438567.27	Found 1.5" Rebar Cap 8204
3158	3927867.52	1438421.61	Found 1.5" Rebar Cap 8204
3233	3926274.76	1438688.05	Found Rebar
3234	3926319.59	1438953.62	Found 1.5" Rebar Cap 2235-S

POINT #	NORTHING	EASTING	DESCRIPTION
3235	3926301.55	1439843.19	Found 3.25" Aluminum Monument
3236	3926295.33	1440153.03	Found Rebar
3237	3926281.84	1440821.25	Found 1.5" Rebar Cap 2235-S
3238	3926278.68	1440960.23	Found Rebar
3239	3926276.94	1441060.17	Found 1.5" Rebar Cap 6474-S
3240	3926275.12	1441149.25	Found 1.5" Rebar Cap 6474-S
3260	3926898.65	1438650.21	Found 2" Aluminum Monument
3261	3926847.45	1438698.89	Found Rebar
3264	3926842.83	1438939.03	Found 1.5" Rebar Cap 2235-S
3265	3926834.83	1439328.52	Found 1.5" Rebar Cap 2235-S
3266	3926827.15	1439708.81	Found 1.5" Rebar Cap 2235-S
3267	3926818.43	1440143.51	Found 1.5" Rebar Cap 2235-S
3268	3926813.70	1440378.51	Found 1.5" Rebar Cap 2235-S
3269	3926808.76	1440623.07	Found 1.5" Rebar Cap 2235-S
3270	3926906.98	1440853.13	Found 1.5" Rebar Cap 2235-S
3271	3926968.04	1441163.02	Found 1.5" Rebar Cap 2235-S
3272	3926857.07	1441210.85	Found 1.5" Rebar Cap 2235-S
3273	3926676.90	1441207.27	Found 3.25" Aluminum Monument
3280	3927878.51	1437768.05	Found 1.5" Rebar Cap 3246-S
3281	3928082.27	1437571.72	Found 1.5" Rebar Cap 3246-S
3282	3928277.18	1437845.16	Found 1.5" Rebar Cap 3246-S
3283	3928062.20	1437308.20	Found 1.5" Rebar Cap 3246-S
3284	3928058.80	1437523.73	Found 1.5" Rebar Cap 3246-S
3285	3927810.69	1437170.99	Found 1.5" Rebar Cap 6474-S

POINT #	NORTHING	EASTING	DESCRIPTION
3286	3927767.02	1437226.87	Found 1.5" Rebar Cap 6474-S
3289	3927657.88	1437038.91	Found 1.5" Rebar Cap 6474-S
3290	3927696.75	1437250.18	Found Rebar
3291	3927947.90	1436944.51	Found 1.5" Rebar Cap 6474-S
3292	3928108.29	1436508.93	Found Rebar
3293	3928144.37	1436333.55	Found Rebar
3294	3927945.94	1436812.44	Found Rebar
3296	3927945.91	1436812.47	Found Rebar
3297	3928020.69	1436824.73	Found Rebar
3298	3928820.80	1436232.46	Found Rebar
3299	3928763.33	1436292.82	Found 1.5" Rebar Cap 3239-S
3300	3928717.62	1436388.05	Found 1.5" Rebar Cap 3239-S
3301	3928706.15	1436471.60	Found 1.5" Rebar Cap 3239-S
3302	3928692.57	1436570.44	Found Rebar
3303	3928689.73	1436816.40	Found Rebar
3304	3928829.56	1437349.22	Found Rebar
3305	3928845.47	1437459.97	Found Rebar
3306	3928880.94	1437690.34	Found 1.5" Rebar Cap
3307	3928961.55	1437707.94	Found 1.5" Rebar Cap
3308	3928721.02	1436549.20	Found 1.5" Rebar Cap 3239-S
3309	3928870.80	1436569.67	Found 1.5" Rebar Cap 3239-S
3311	3928913.88	1436572.64	Found Rebar
3311	3928889.25	1436571.27	Found 1.5" Rebar Cap 3239-S
3312	3929493.67	1436585.59	Found Rebar

REVISIONS		
REV. #	DATE	DESCRIPTION

DESIGNED BY: SCALE:
DRAWN BY: C.K. 1" = 5000'
CHECKED BY:

SITE NAME:
CLEARING FOR DISTRIBUTION SYSTEM PHASE 1 NORTH POLE, ALASKA

DRAWING TITLE:
SURVEY CONTROL

DRAWING NO.:
V1.05

