

## Interior Gas Utility (Phase II)

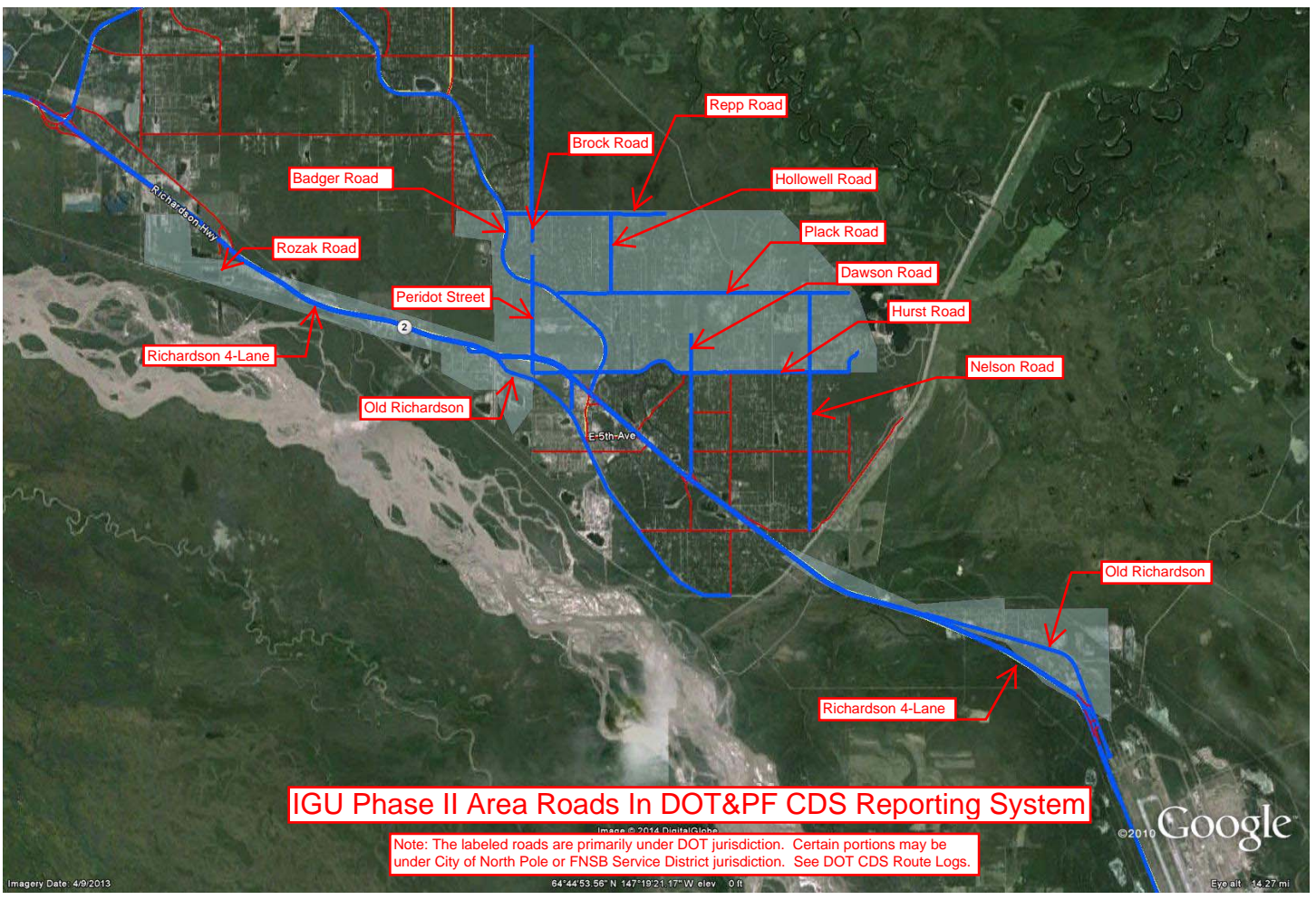
December 17, 2014

### **ATTACHMENT "B": ROADS IN DOT&PF REPORTING SYSTEM**

- DOT&PF Roads Index (1 page)
- CDS Reporting System Spreadsheet (1 page)



*Innovating Today for Alaska's Tomorrow*



## IGU Phase II Area Roads In DOT&PF CDS Reporting System

Note: The labeled roads are primarily under DOT jurisdiction. Certain portions may be under City of North Pole or FNSB Service District jurisdiction. See DOT CDS Route Logs.

IGU Phase II Area Roads In DOT&PF CDS Reporting System									
Road	DOT&PF	Maintenance	Milepoint		Road Landmarks		General	Borough/City	
Name	CDS Route	Jurisdiction	Begin	End	From	To	Direction	Service District	PUE
Badger Road	188800	DOT&PF	8.190	10.888	Repp	Hurst	SE	n/a	0%
Brock Road	188335	Borough	2.129	2.490	Repp	Natalie	South	Pinestream	n/a
Dawson Road	188871	Borough	0.000	0.674	Plack	Dundee	North	Hopeless	n/a
Dawson Road	188870	DOT&PF	1.366	1.524	Hurst	Sharon	North	Moose Meadows	100%
Dawson Road	188870	Borough	1.524	1.863	Sharon	Yellowstone	North	Moose Meadows	100%
Hollowell Road	188487	DOT&PF	0.000	1.002	Repp	Plack	South	n/a	60%
Hurst Road	188860	DOT&PF	0.801	3.570	Nelson	Badger	West	n/a	n/a
Nelson Road	188549	DOT&PF	2.007	3.007	Hurst	Plack	East	n/a	80%
Old Richardson	188100	DOT&PF	1.902	2.420	Osage	Baker	NW	n/a	0%
Peridot Road	188880	DOT&PF	0.000	0.192	Finell	Richardson	North	n/a	0%
Peridot Road	188880	North Pole	0.192	0.274	Richardson	"Church"	North	North Pole	n/a
Peridot Road	188880	Borough	0.274	1.491	"Church"	Garnet	North	N. Pole - Partial	n/a
Plack Road	188500	Borough	0.000	0.502	Gordon	Nelson	East	Moose Meadows	n/a
Plack Road	188500	DOT&PF	0.502	3.708	Nelson	Badger	East	n/a	30%
Repp Road	188805	DOT&PF	0.000	1.798	Badger	Pool	East	n/a	50%
Repp Road	188805	Borough	1.798	2.047	Pool	Road End	East	None	n/a
Rozak Road	189000	DOT&PF	0.202	0.384	Richardson	Road End	South	n/a	100%
Richardson	190000	DOT&PF	345.0	357.9	Eielson	Rozak	NW	n/a	100%

Notes: The PUE column represents estimated percentage of pipe routing that will be placed in an existing public utility easement adjoining the road right of way. CDS means "Coordinated Data System", a DOT&PF road log database. See: <http://www.dot.alaska.gov/hdpapp/forms/Reports.html>