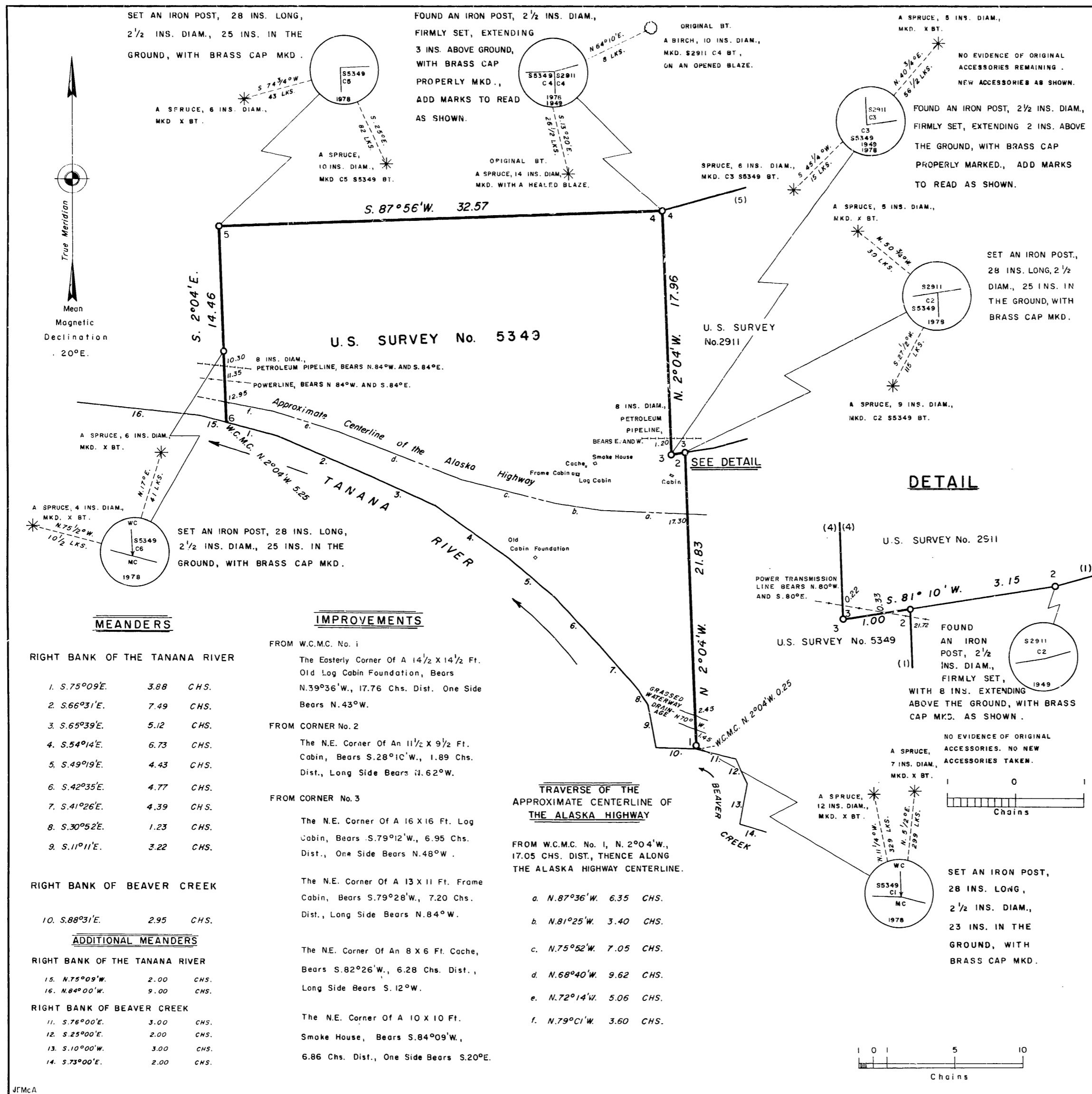


The Mean Magnetic Declination is 30° 20' E.
See Memorandum dated November 25, 1980, File 9611 (920)



MEANDERS

RIGHT BANK OF THE TANANA RIVER

1. S. 75° 09' E.	3.88	CHS.
2. S. 66° 31' E.	7.49	CHS.
3. S. 65° 39' E.	5.12	CHS.
4. S. 54° 04' E.	6.73	CHS.
5. S. 49° 09' E.	4.43	CHS.
6. S. 42° 35' E.	4.77	CHS.
7. S. 41° 26' E.	4.39	CHS.
8. S. 30° 52' E.	1.23	CHS.
9. S. 11° 11' E.	3.22	CHS.

RIGHT BANK OF BEAVER CREEK

10. S. 88° 31' E.	2.95	CHS.
-------------------	------	------

ADDITIONAL MEANDERS

RIGHT BANK OF THE TANANA RIVER

15. N. 75° 09' W.	2.00	CHS.
16. N. 84° 00' W.	9.00	CHS.

RIGHT BANK OF BEAVER CREEK

11. S. 76° 00' E.	3.00	CHS.
12. S. 25° 00' E.	2.00	CHS.
13. S. 10° 00' W.	3.00	CHS.
14. S. 73° 00' E.	2.00	CHS.

IMPROVEMENTS

FROM W.C.M.C. No. 1
The Easterly Corner Of A 14 1/2 X 14 1/2 Ft. Old Log Cabin Foundation, Bears N. 39° 36' W., 17.76 Chs. Dist. One Side Bears N. 43° W.

FROM CORNER No. 2
The N.E. Corner Of An 11 1/2 X 9 1/2 Ft. Cabin, Bears S. 28° 10' W., 1.89 Chs. Dist., Long Side Bears N. 62° W.

FROM CORNER No. 3
The N.E. Corner Of A 16 X 16 Ft. Log Cabin, Bears S. 79° 12' W., 6.95 Chs. Dist., One Side Bears N. 48° W.

The N.E. Corner Of A 13 X 11 Ft. Frame Cabin, Bears S. 79° 28' W., 7.20 Chs. Dist., Long Side Bears N. 84° W.

The N.E. Corner Of An 8 X 6 Ft. Cache, Bears S. 82° 26' W., 6.28 Chs. Dist., Long Side Bears S. 12° W.

The N.E. Corner Of A 10 X 10 Ft. Smoke House, Bears S. 84° 09' W., 6.86 Chs. Dist., One Side Bears S. 20° E.

TRAVERSE OF THE APPROXIMATE CENTERLINE OF THE ALASKA HIGHWAY

FROM W.C.M.C. No. 1, N. 2° 04' W., 17.05 CHS. DIST., THENCE ALONG THE ALASKA HIGHWAY CENTERLINE.

a. N. 87° 36' W.	6.35	CHS.
b. N. 81° 25' W.	3.40	CHS.
c. N. 75° 52' W.	7.05	CHS.
d. N. 68° 40' W.	9.62	CHS.
e. N. 72° 14' W.	5.06	CHS.
f. N. 79° 01' W.	3.60	CHS.

U. S. SURVEY No. 5349, ALASKA

This plat contains the entire survey record.

U S Survey No. 2911 was surveyed by John M Short, Cadastral Engineer, in 1949.

Prior to this survey, lines 2-3 and 3-4 of U S Survey No. 2911 were retraced.

This survey was executed by Michael R. Collie, Cadastral Surveyor, September 26 through 29, 1978, in accordance with the specifications as set forth in the Manual of Surveying Instructions, 1973, the Special Instructions dated August 27, 1975, approved September 19, 1975, and Assignment Instructions dated June 30, 1978, for U S Survey No. 5349, Alaska.

Area surveyed: 79.97 Acres.

Azimuth was obtained from direct observations of the sun and refers to the true meridian.

The approximate geographic position of the witness corner to corner No. 1, a meander corner, as scaled from U S Geological Survey quadrangle map "TANACROSS (A-2), Alaska," 1955 edition, with minor revisions in 1972, is:

Latitude 63° 03.0' North, Longitude 141° 51.4' West

The observed mean magnetic declination for this survey is 30° 20' East.

This survey is situated on the Alaska Highway, approximately 20 chains westerly from the Beaver Creek Roadhouse and about 3 miles northwesterly of Northway Junction.

The area is covered with spruce, birch, and scrub willow.

The soil is alluvial silt and loam.

UNITED STATES DEPARTMENT OF THE INTERIOR
BUREAU OF LAND MANAGEMENT
Anchorage, Alaska October 6, 1980

This plat, having been correctly executed in accordance with the requirements of law and the regulations of this Bureau, is hereby accepted.

For the Director
Jimmy J. [Signature]
Chief, Division of Cadastral Survey, Alaska

