



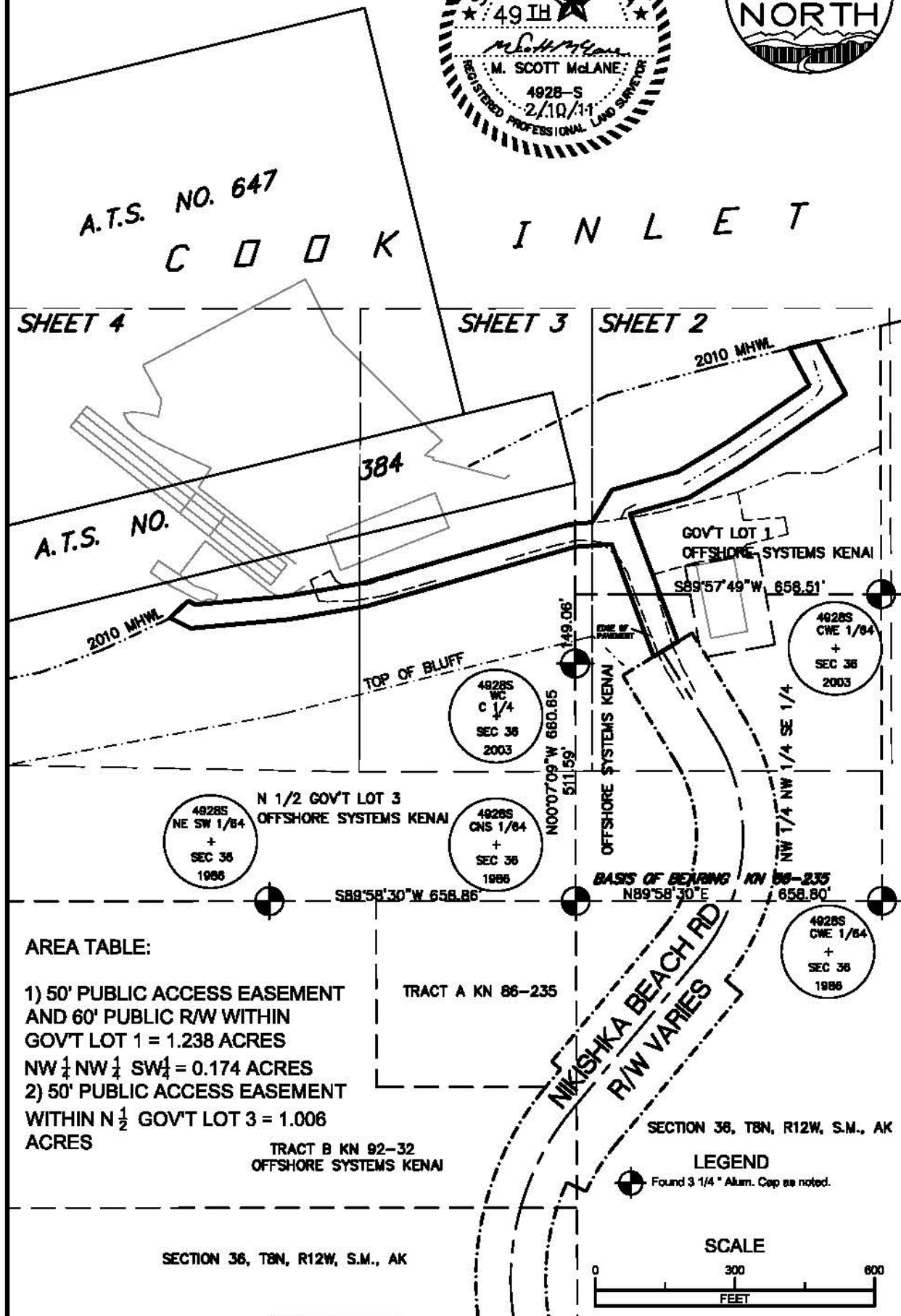
A.T.S. NO. 647

C O O K I N L E T

SHEET 4

SHEET 3

SHEET 2



AREA TABLE:

- 1) 50' PUBLIC ACCESS EASEMENT AND 60' PUBLIC R/W WITHIN GOV'T LOT 1 = 1.238 ACRES
NW 1/4 NW 1/4 SW 1/4 = 0.174 ACRES
- 2) 50' PUBLIC ACCESS EASEMENT WITHIN N 1/2 GOV'T LOT 3 = 1.006 ACRES

TRACT A KN 88-235

TRACT B KN 92-32
OFFSHORE SYSTEMS KENAI

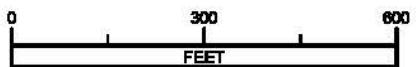
SECTION 36, T8N, R12W, S.M., AK

SECTION 36, T8N, R12W, S.M., AK

LEGEND

Found 3 1/4" Alum. Cap as noted.

SCALE



EASEMENT EXHIBIT



OFFSHORE SYSTEMS
KENAI
NIKISKI, ALASKA

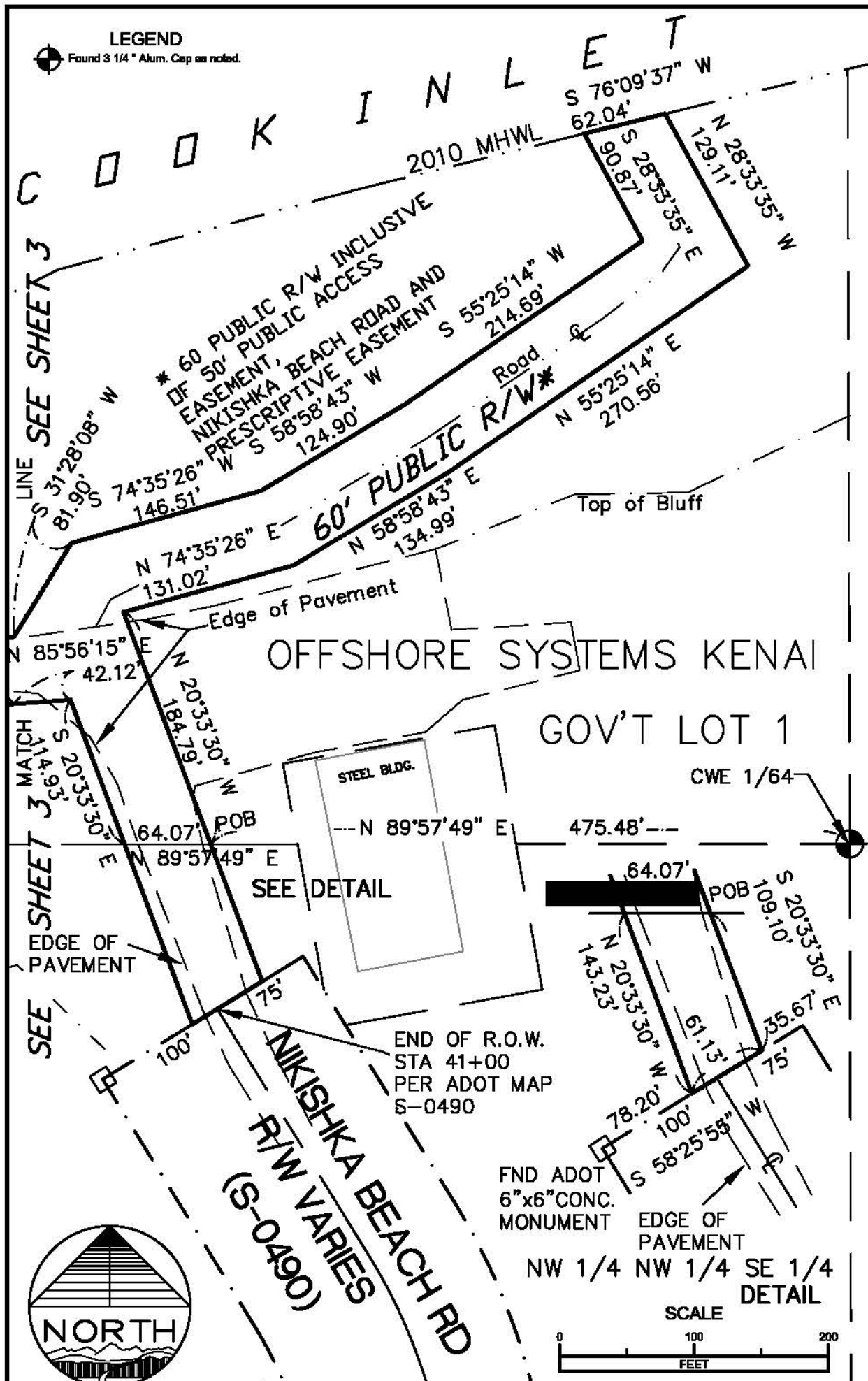
PROJECT: 093003	
SCALE: 1"=300'	
DRAWN:	DATE: 2/10/11
CHECKED:	1 SHEET # 4
APPRVD:	OF 4



ENGINEERING - TESTING
SURVEYING - MAPPING
P.O. BOX 468
SOLDOTNA, AK 99669
VOICE: (907) 283-4218
FAX: (907) 283-3285
WWW.MCLANECG.COM

PUBLIC ACCESS EASEMENT & R/W
LOT 1, N1/2 GOV'T LOT 3 & NW1/4 NW1/4 SW 1/4
SECTION 36 T8N R12W S.M. AK KENAI RECORDING DIST.
DRAWING NUMBER:
093003_OSK_ESMT
REV.#: 3

LEGEND
 Found 3/4" Alum. Cap as noted.



EASEMENT EXHIBIT

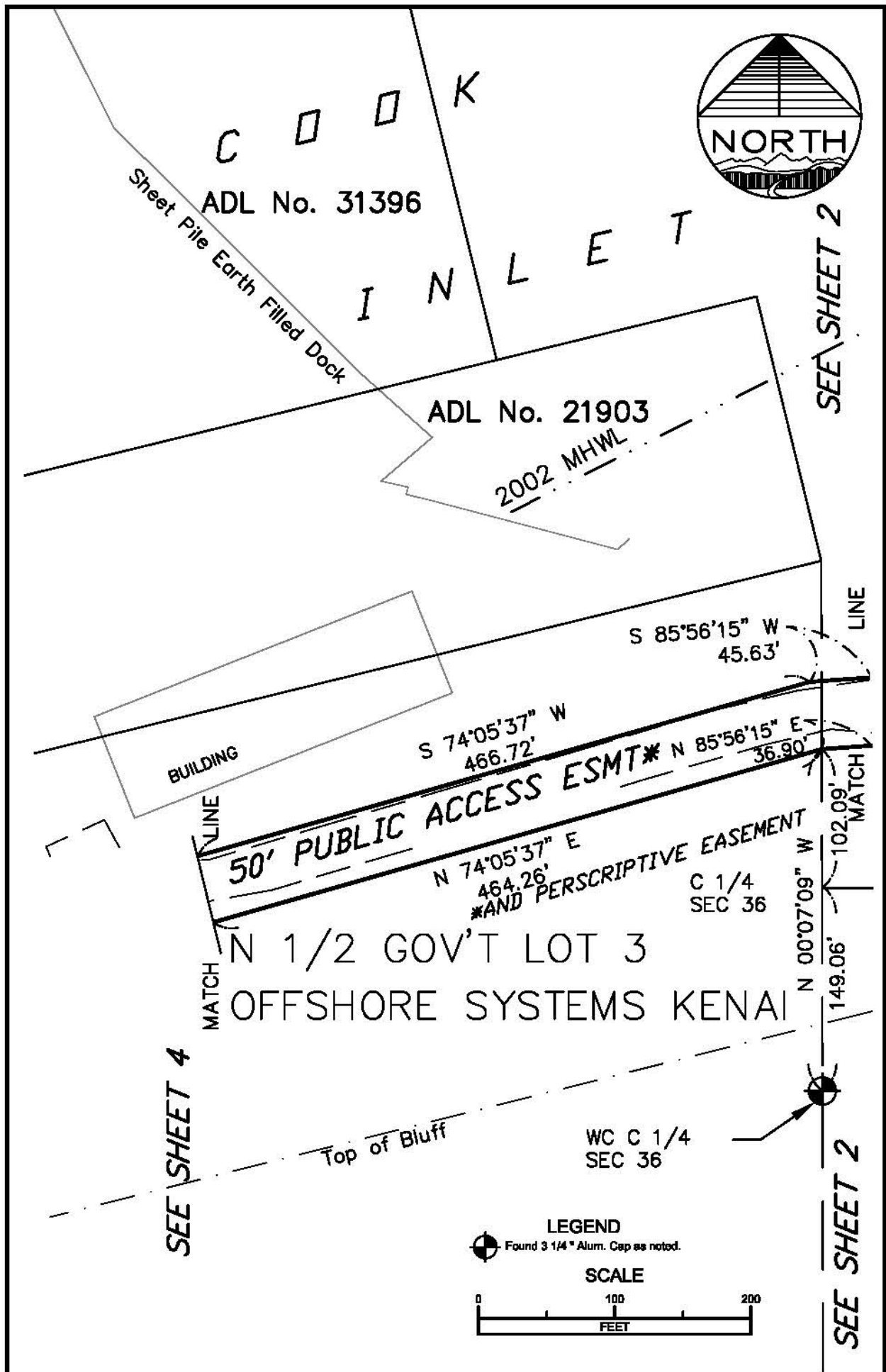


OFFSHORE SYSTEMS
 KENAI
 NIKISKI, ALASKA

PROJECT: 093003	
SCALE: 1"=100'	
DRAWN:	DATE: 2/10/11
CHECKED:	2 SHEET # 4
APPRVD:	OF 4

MCLANE
 ENGINEERING - TESTING
 SURVEYING - MAPPING
 P.O. BOX 468
 SOLDOTNA, AK 99689
 VOICE: (907) 283-4218
 FAX: (907) 283-3285
 WWW.MCLANECG.COM

PUBLIC ACCESS EASEMENT & R/W
 LOT 1, N1/2 GOV'T LOT 3 & NW1/4 NW1/4 SW 1/4
 SECTION 36 T8N R12W S.M. AK KENAI RECORDING DIST.
 DRAWING NUMBER: 093003_OSJ_ESMT
 REV.#: 3



EASEMENT EXHIBIT



OFFSHORE SYSTEMS
KENAI
NIKISKI, ALASKA

PROJECT: 093003	
SCALE: 1"=100'	
DRAWN:	DATE: 2/10/11
CHECKED:	3 SHEET # 4
APPRVD:	OF 4



ENGINEERING - TESTING
SURVEYING - MAPPING
P.O. BOX 468
SOLDOTNA, AK 99669
VOICE: (907) 283-4218
FAX: (907) 283-3285
WWW.MCLANECG.COM

PUBLIC ACCESS EASEMENT & R/W
LOT 1, N1/2 GOV'T LOT 3 & NW1/4 NW1/4 SW 1/4
SECTION 36 T8N R12W S.M. AK KENAI RECORDING DIST.

DRAWING NUMBER:
093003_OSK_ESMT

REV.#: 3

C O O K

Sheet Pile Earth Filled Dock



ADL No. 31396

MARINE RAILWAY

ADL No. 21903

SHIP HAULOUT

I N L E T

S 80°21'24" W
168.31'

Ramp
Sheet Pile Wall

N 63°04'45" W
17.45'

S 84°45'55" W
193.81'

S 47°00'19" W
53.24'
2010 MHWL

S 63°04'45" E
50.15'

N 84°45'55" E
210.14'

N 80°21'24" E
172.97'

50' PUBLIC ACCESS ESMT*

* AND PERSCRIPTIVE EASEMENT

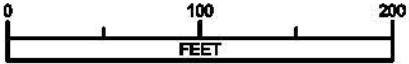
N 1/2 GOV'T LOT 3
OFFSHORE SYSTEMS KENAI

SEE SHEET 3 MATCH

LEGEND

Found 3 1/4" Alum. Cap as noted.

SCALE



EASEMENT EXHIBIT



OFFSHORE SYSTEMS
KENAI
NIKISKI, ALASKA

PROJECT: 093003
SCALE: 1"=100'
DRAWN: _____ DATE: 2/10/11
CHECKED: _____ SHEET # 4
APPRVD: _____ OF 4



ENGINEERING - TESTING
SURVEYING - MAPPING
P.O. BOX 468
SOLDOTNA, AK 99669
VOICE: (907) 283-4218
FAX: (907) 283-3285
WWW.MCLANECG.COM

PUBLIC ACCESS EASEMENT & R/W
LOT 1, N1/2 GOV'T LOT 3 & NW1/4 NW1/4 SW 1/4
SECTION 36 T8N R12W S.M. AK KENAI RECORDING DIST.

DRAWING NUMBER: 093003_OS_K_ESMT REV.#: 3