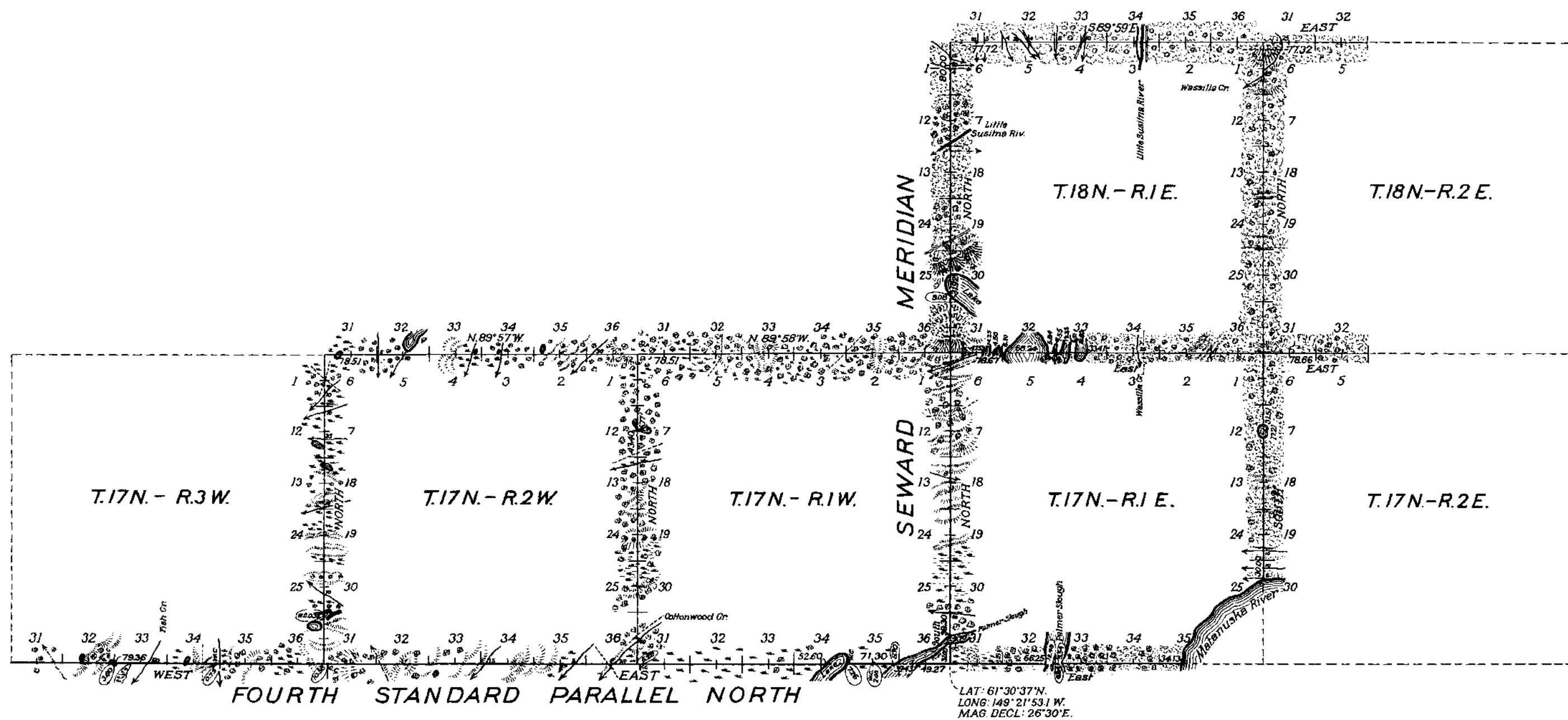


TOWNSHIP EXTERIORS

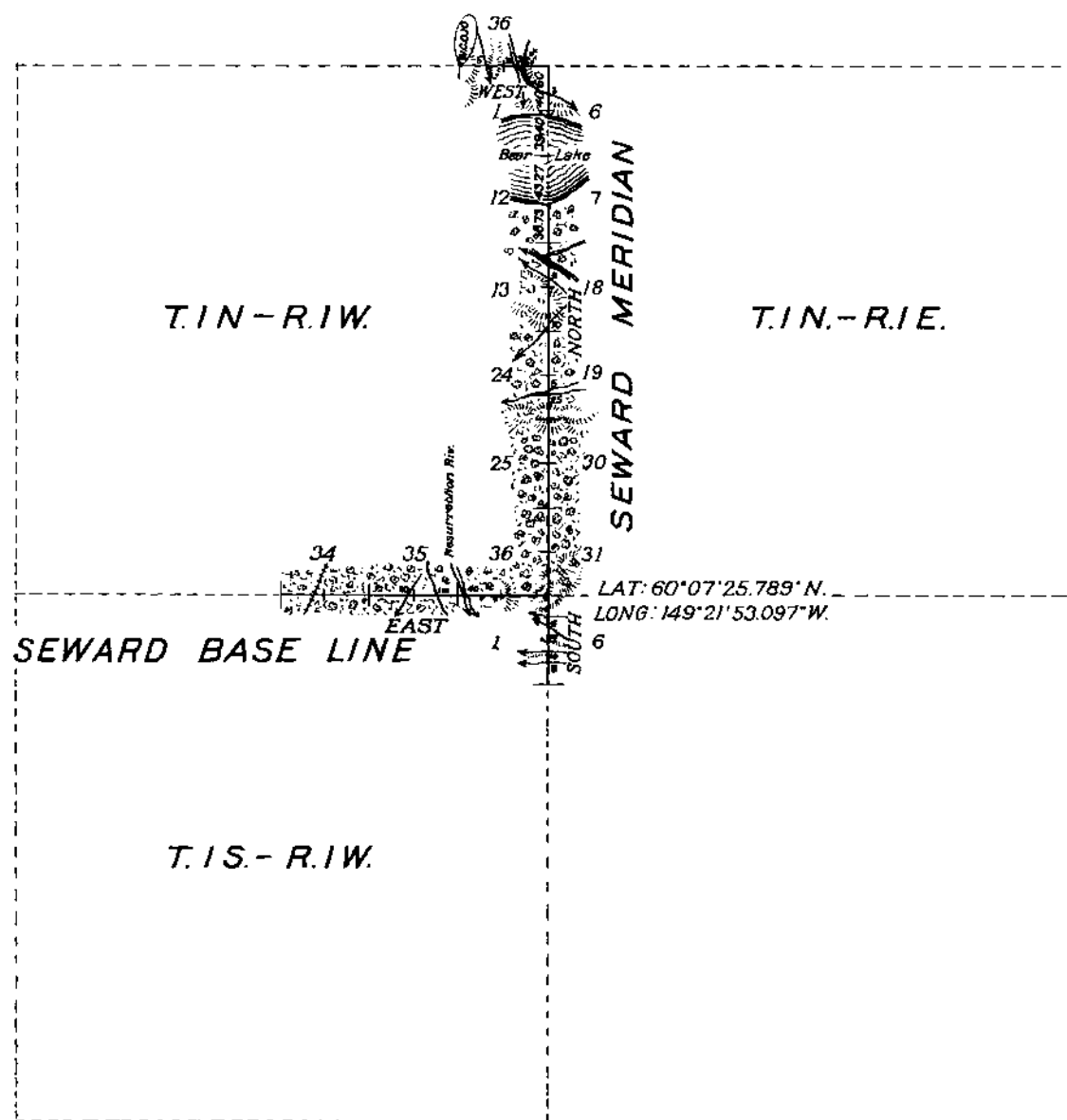
Scale: 1 inch to 160 chains



LAT: 61°30'37" N.
LONG: 149°21'53.1" W.
MAG. DECL: 26°30' E.

Table of Mileage

Surveys designated	Amount		When surveyed
	Mis	Chs	
Standard lines	44	34 13	May 10, 1911 - Sept. 11, 1913
Township lines	51	19 39	June 16, 1911 - Sept. 17, 1913



LAT: 60°07'25.789" N.
LONG: 149°21'53.097" W.

THIS PLAT
of the

SEWARD BASE LINE through R.1W.
SEWARD MERIDIAN " Ts. 1, 17 & 18 N.
4TH STANDARD PARALLEL N. " Rs. 1, 2, 3 W. & R.1E.
NORTH boundary T.1N.-R.1W.
" & WEST boundaries Ts. 17N.-R.1 & 2W.
" " EAST " T.17N.-R.1E.
" " SOUTH " T.18N.-R.2E.

of the Seward Base and Meridian in the territory of Alaska is strictly conformable to the field notes of the surveys thereof by

John P. Walker U.S.S. and G.G. McDaniel, U.S.T.
under their instructions dated April 11, 1911 and
J. Frank Warner and F.W. Williamson, U.S. Sur.
under their instructions dated May 15, 1912 and
May 31, 1913 which have been examined, approved
and filed in this office.

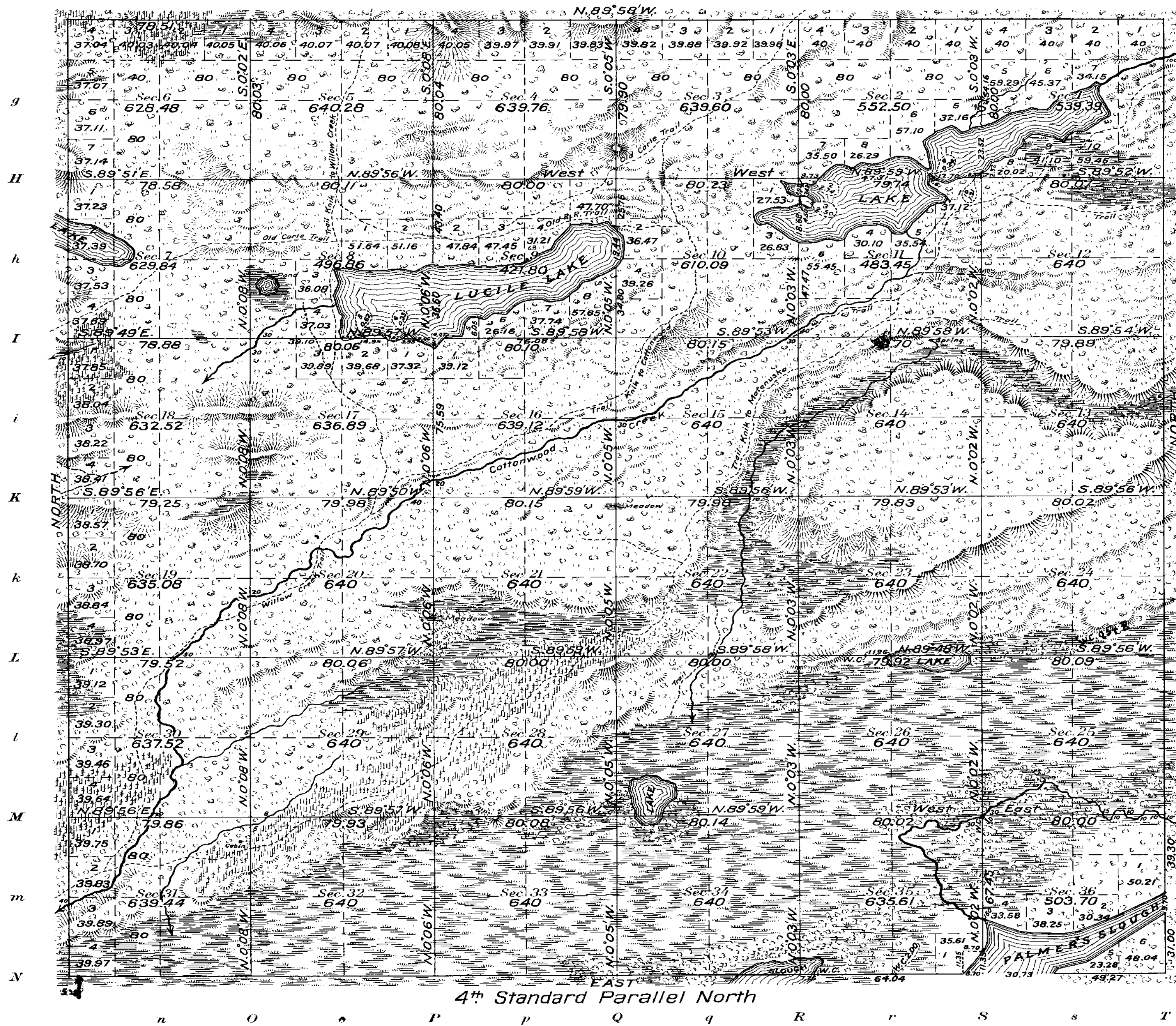
U.S. Surveyor General's Office
Juneau, Alaska, June 11, 1914

Charles E. Davidson
U.S. Surv. General

(4-675a)

Township N^o 17 North Range N^o 1 West of the Seward Meridian, Alaska.

G f F e E d D c C b B a A



See supplemental plat sec. 10

Areas in Acres	
Public Land	22121.93
Indian Reservation	
Indian Allotments	
Mineral Claims	
Water Surface	880.59
Total Area	23002.52

Latitude 61° 30' 37" N.
 Longitude 149° 21' 53" W.
 Scale 40 Chains to an inch
 Mean Magnetic Declination

Surveys Designated	By Whom Surveyed	Contract No.	Contract Date	Amount of Surveys			When Surveyed	
				Mls.	chs.	lks.	Begun	Completed
Subdivisions	J. P. Walker.			59	76	31	July 31, 1911	July 29, 1912
N. and W. Boundaries	"			11	78	51	" 27 "	" " "
S. Boundary	"			4	71	30	" 5 "	Oct. 5, "
S. "	J.F. Warner & F.W. Williatson			1	08	70	22, 1912	July 22, 1912
E. "	J.P. Walker.			6	00	00	Aug. 9, 1911	Aug. 17, 1911
Meanders	"			11	38	07	" " "	" 31 "
"	J.F. Warner.			0	58	59	July 29, 1912	July 29, 1912

The above map of Township No. 17 North Range No. 1 West of the Seward Meridian Alaska, is strictly conformable to the field notes of the survey thereof on file in this office, which have been examined and approved
 U. S. Surveyor General's Office.
 Juneau, Alaska. February 19, 1915.

Charles E. Davidson
 Surveyor General.

Calculating & Plotting J.M.T.

Supplemental Plat of Sec. 10
Township N^o17 North, Range N^o1 West of the Seward Meridian, Alaska.

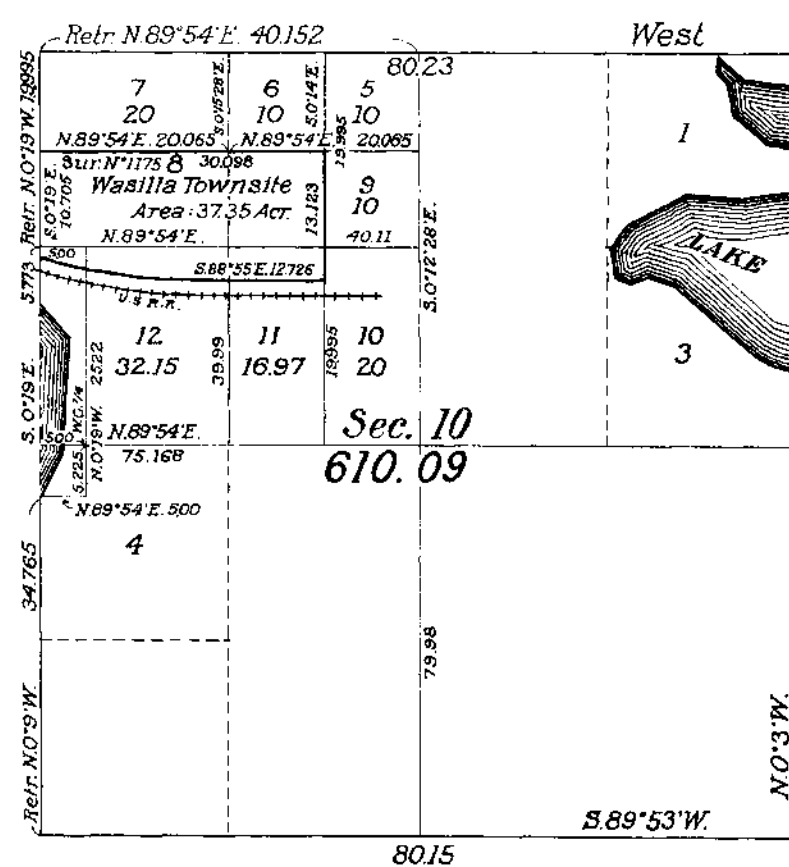
See Executive Order No. 6957
 withdrawing for classification
 purposes

T. 17 N., Rs. 1, 2 and 3 E.
 T. 18 N., Rs. 1, 2 and 3 E.
 T. 19 N., Rs. 1 and 2 E.
 T. 17 N., Rs. 1 and 2 W.
 T. 18 N., Rs. 1 W.

Shore space restoration No. 3,
 dated March 21, 1921, restored
 to entry lands surrounding or
 abutting on lakes in this town-
 ship.

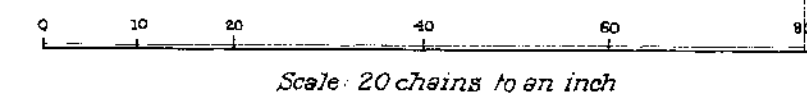
It does not, however, affect
 creeks, estuaries or waterways
 connecting said lakes with the
 sea, where such connections are
 or may be runways for sea going
 fish to and from spawning grounds

Amended by Executive Orders
 Nos. 7047, 7416, 8372 and 9022
 and Public Land Orders Nos. 79,
 149 and 272.



*(Initial notes of Land div.
 in notes of Survey)*

Areas in Acres	
Public Land	572.74
Townsite	37.35
Total	610.09

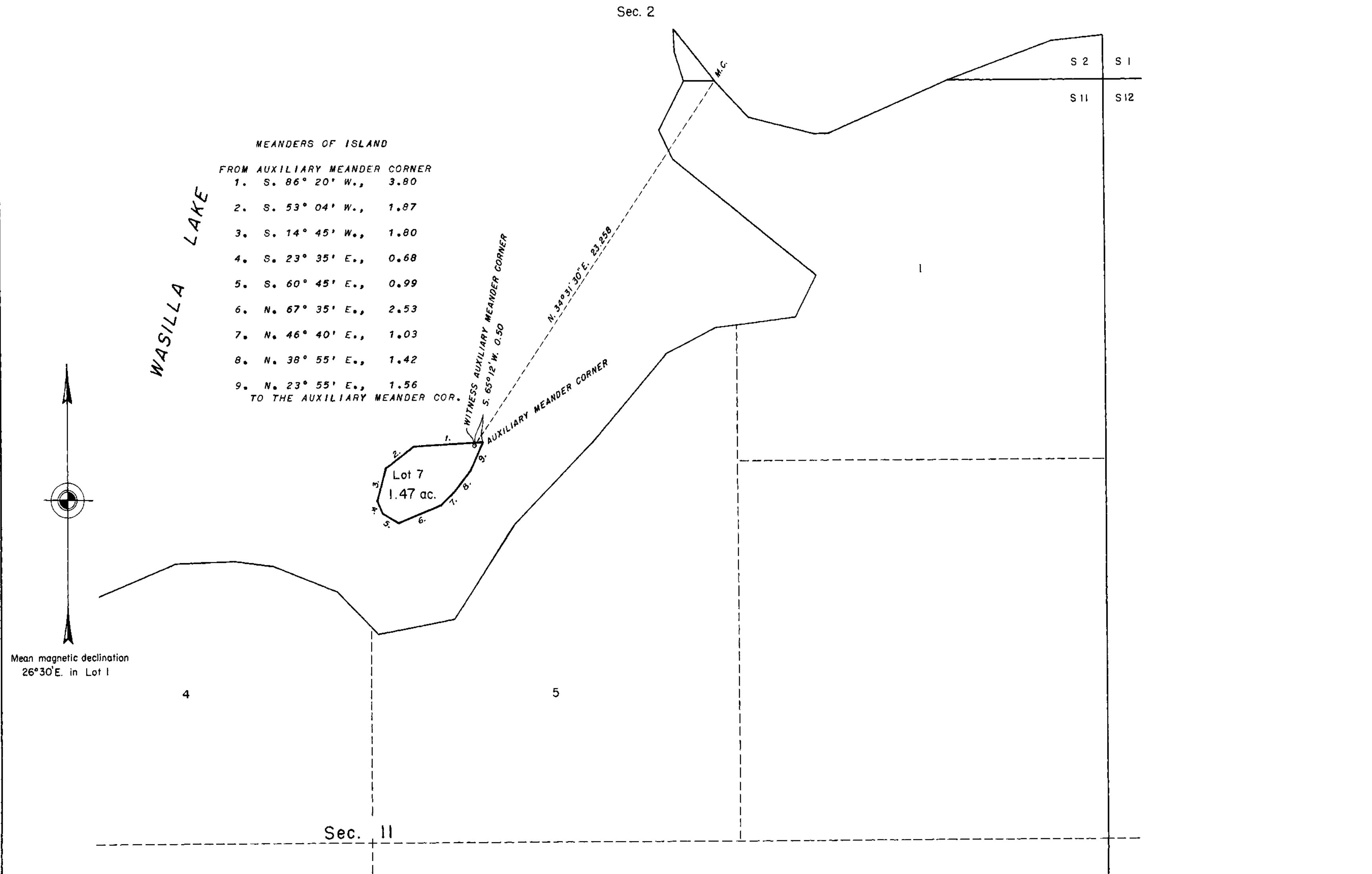


Mean Magnetic Declination: 26° 20' E.

The above supplemental map of Section 10, Township N^o17 North, Range N^o1 West of the Seward Meridian, Alaska is strictly conformable with Commissioners letter 660743 E dated July 27, 1918 and the same has been examined and approved.

U.S. Surveyor General's Office }
 Juneau, Alaska, Aug. 16, 1918 } *Charles Edvardson*
 U.S. Surveyor General

TOWNSHIP 17 NORTH, RANGE 1 WEST, OF THE SEWARD MERIDIAN, ALASKA
ISLAND DESIGNATED LOT 7 IN SECTION 11

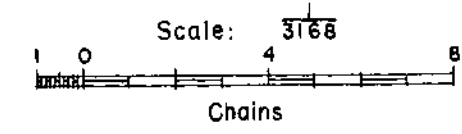


MEANDERS OF ISLAND

- FROM AUXILIARY MEANDER CORNER
1. S. 86° 20' W., 3.80
 2. S. 53° 04' W., 1.87
 3. S. 14° 45' W., 1.80
 4. S. 23° 35' E., 0.68
 5. S. 60° 45' E., 0.99
 6. N. 67° 35' E., 2.53
 7. N. 46° 40' E., 1.03
 8. N. 38° 55' E., 1.42
 9. N. 23° 55' E., 1.56
- TO THE AUXILIARY MEANDER COR.

Lot 7
1.47 ac.

Mean magnetic declination
26°30'E. in Lot 1



HISTORY OF SURVEYS

THE SUBDIVISION SURVEY OF T. 17 N., R. 1 W., S. M., WAS EXECUTED BY J. F. WARNER AND F. W. WILLIAMSON BETWEEN JULY 31, 1911 AND JULY 29, 1912. THE ISLAND DESIGNATED LOT 7, SECTION 11, T. 17 N., R. 1 W., S. M. WAS SURVEYED AUG. 12, 1949 BY LEONARD M. BERLIN, UNDER SPECIAL INSTRUCTIONS DATED FEBRUARY 9, 1949 FOR GROUP 71, ALASKA.

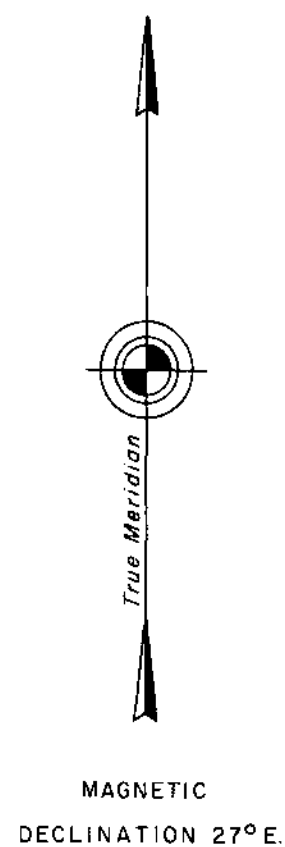
UNITED STATES DEPARTMENT OF THE INTERIOR
BUREAU OF LAND MANAGEMENT
WASHINGTON, D. C., APRIL 20, 1950

THIS PLAT IS STRICTLY CONFORMABLE TO THE APPROVED FIELD NOTES, AND THE SURVEY, HAVING BEEN CORRECTLY EXECUTED IN ACCORDANCE WITH THE REQUIREMENTS OF LAW AND THE REGULATIONS OF THIS BUREAU, IS HEREBY ACCEPTED.

FOR THE DIRECTOR
William F. Richards
CHIEF, BRANCH OF SURVEYS

P&C
E.A.H.

TOWNSHIP 17 NORTH, RANGE 1 WEST, OF THE SEWARD MERIDIAN, ALASKA
 SURVEY OF OMITTED ISLAND IN SECTION 9

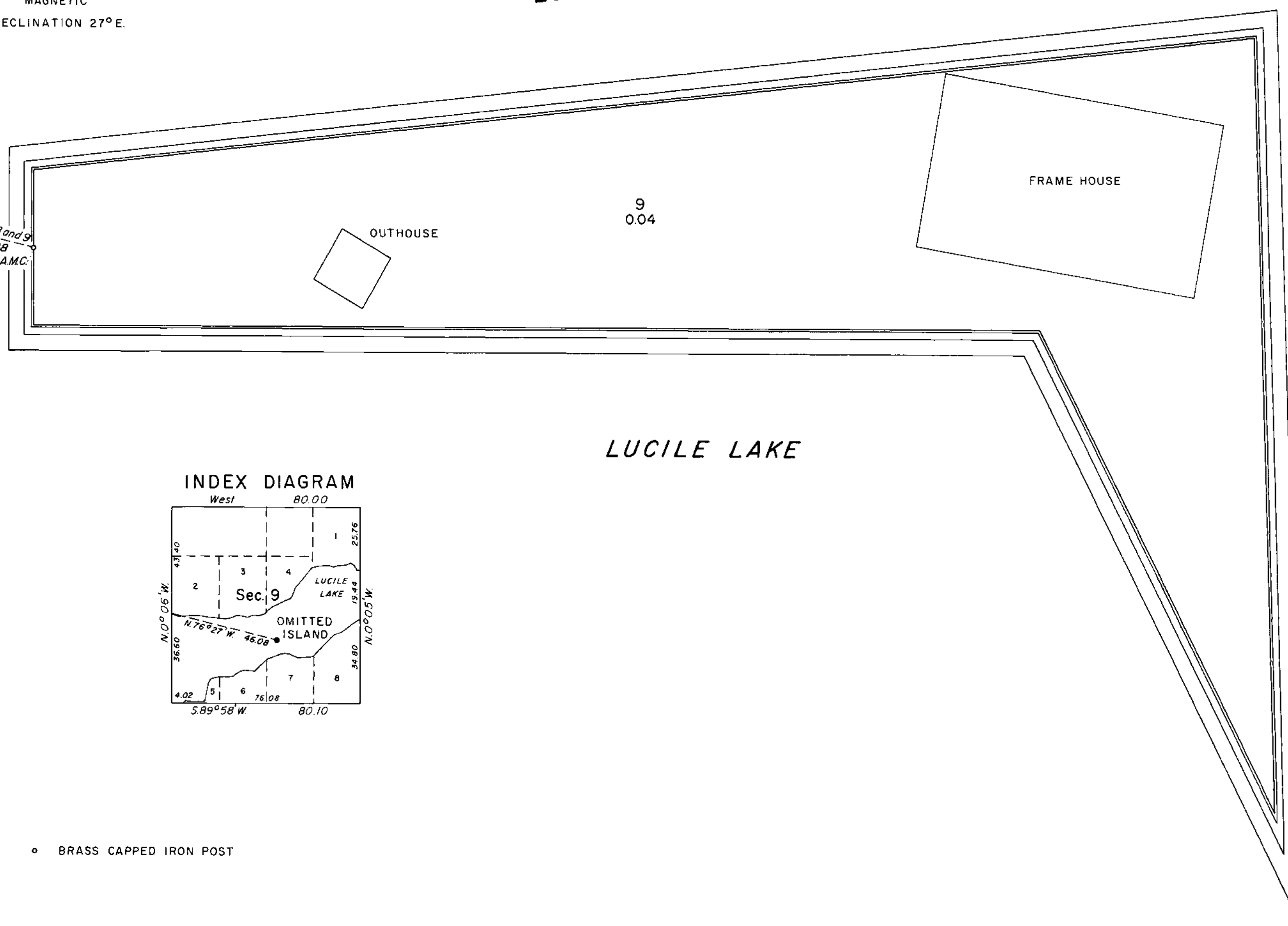


LUCILE LAKE

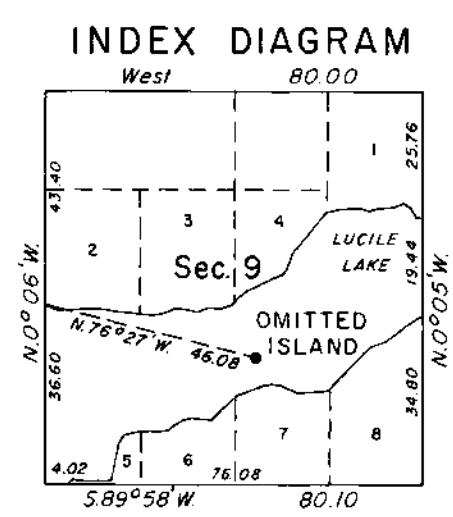
The boundaries, subdivisional, and meander lines of the township were surveyed by J. Frank Warner, F. W. Williamson, T. W. Bates, and J. P. Walker, from August 1911 to September 1915. A portion of the subdivisional lines was resurveyed and subdivision of sections surveyed by Floyd G. Betts, from April to September 1935.

The survey of the omitted island, designated as lot 9, section 9, on this plat, was executed by Perley J. West, Supervisory Cadastral Surveyor, September 24, 1964, under Special Instructions dated June 26, 1963, and approved June 28, 1963, for Group No. 167, Alaska.

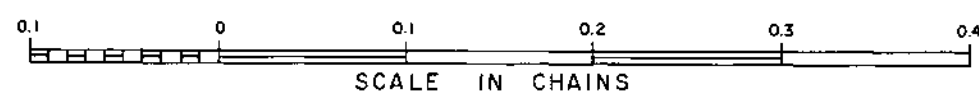
Reference should be made to the plat approved February 19, 1915, for areas not shown hereon.



LUCILE LAKE



• BRASS CAPPED IRON POST



Area Surveyed: 0.04 Acres

UNITED STATES DEPARTMENT OF THE INTERIOR
 BUREAU OF LAND MANAGEMENT
 Washington, D. C. January 3, 1966

This plat is strictly conformable to the approved field notes, and the survey, having been correctly executed in accordance with the requirements of law and the regulations of this Bureau, is hereby accepted.

For the Director

Ed Livingston
 Chief, Division of Engineering

TOWNSHIP 17 NORTH, RANGE 1 WEST, OF THE SEWARD MERIDIAN, ALASKA
 DEPENDENT RESURVEY AND SUBDIVISION OF SECTION 6

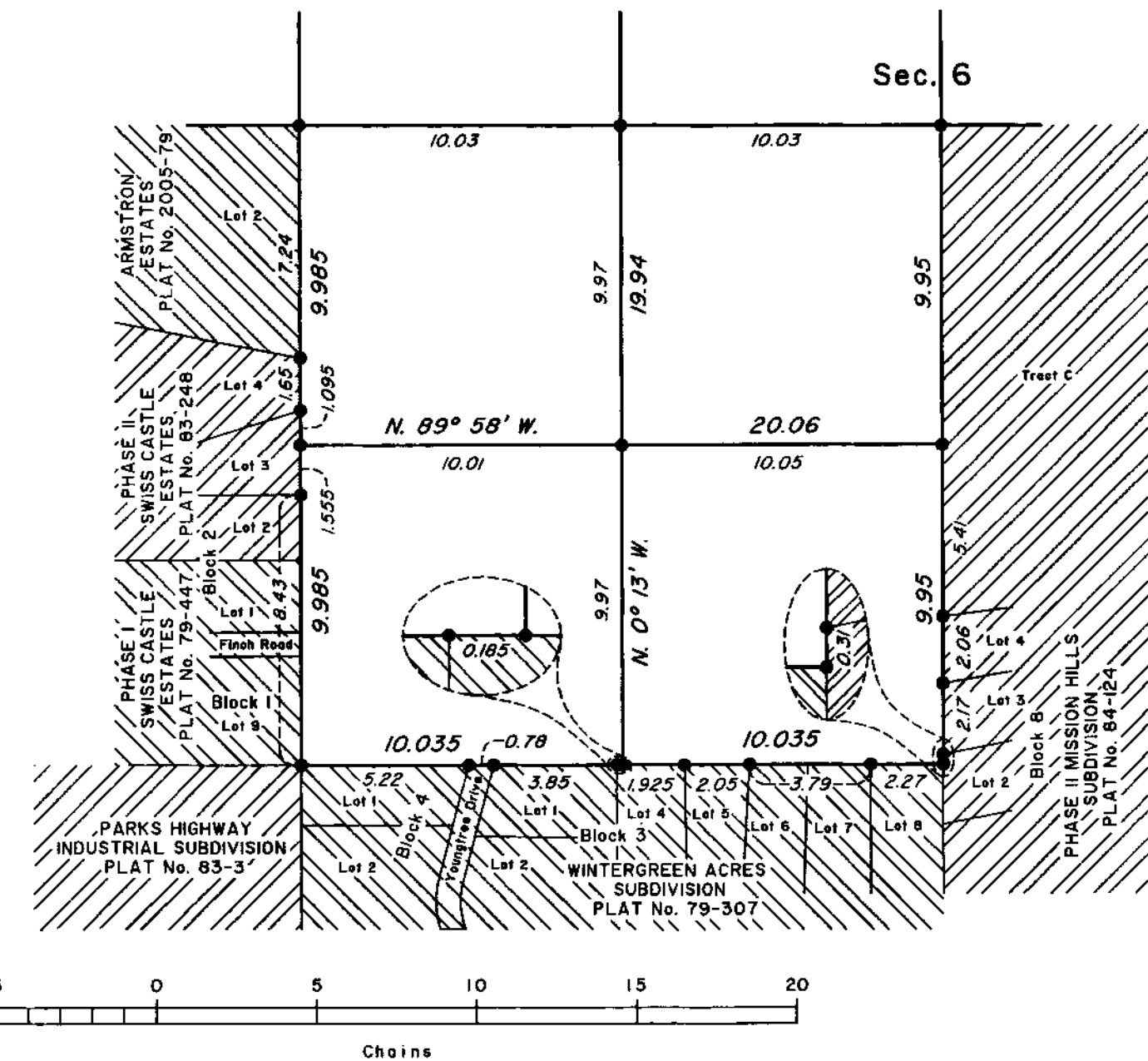
The history of surveys is contained in the field notes.

This plat and the field notes represent the dependent resurvey of a portion of the west and north boundaries, and the survey of the subdivision of section 6, Township 17 North, Range 1 West, Seward Meridian, Alaska.

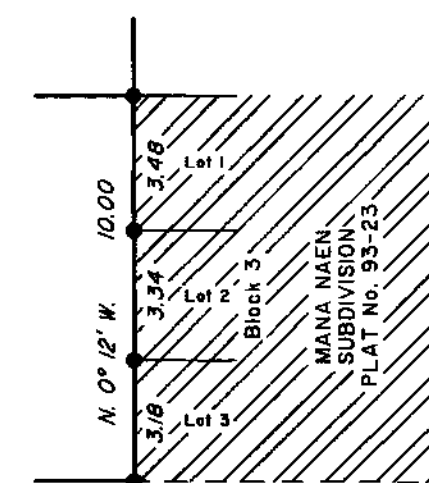
Except as indicated hereon, the lottings and areas are as shown on the plat of survey accepted February 19, 1915.

This survey was executed by Nathan C. Erickson, Cadastral Surveyor, August 7, 2007 through October 29, 2007, in accordance with the specifications set forth in the Manual of Surveying Instructions, 1973, and Special Instructions for Group No. 1027, Alaska, dated June 18, 2007.

Enlarged Diagram A



Enlarged Diagram B



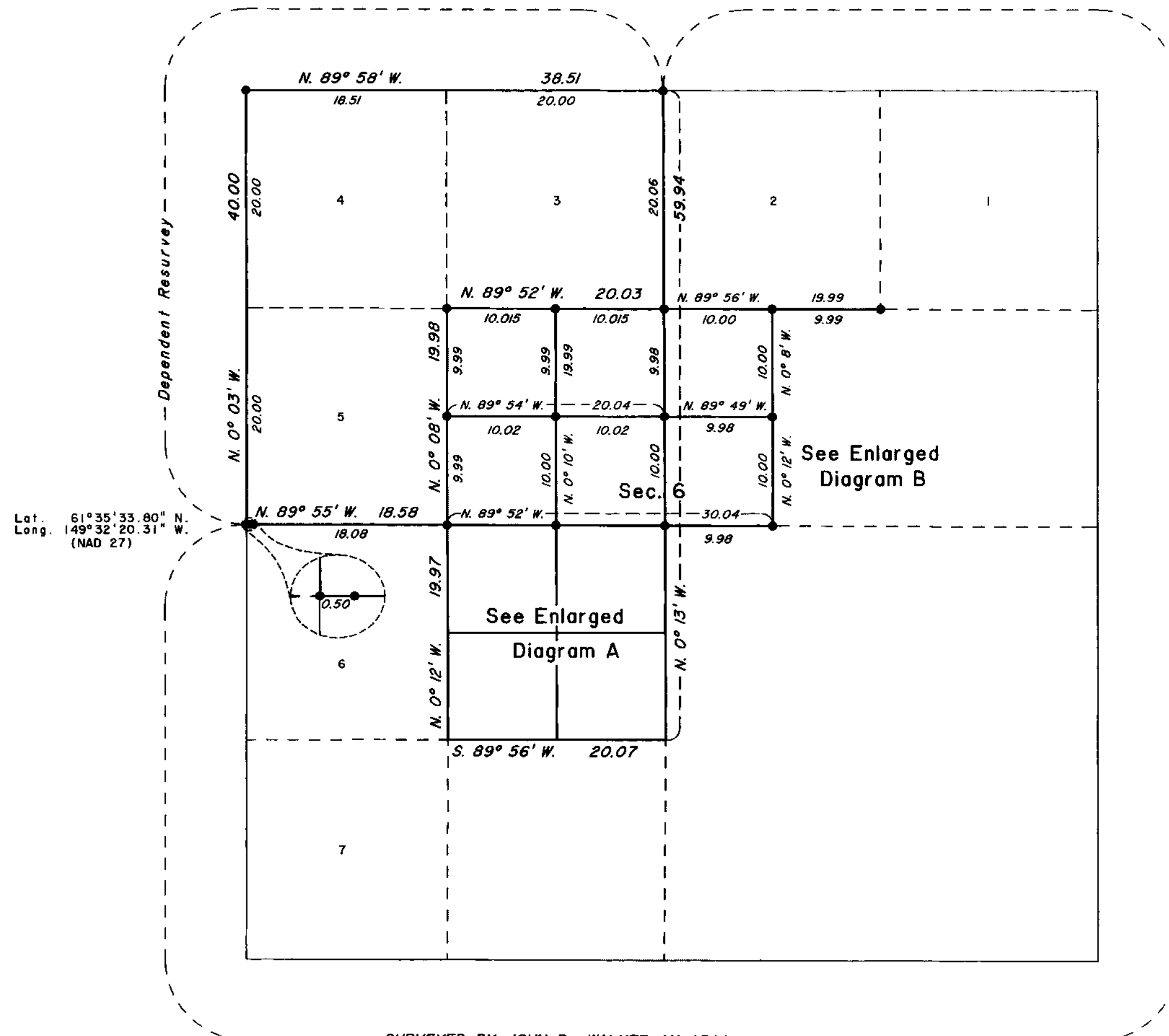
UNITED STATES DEPARTMENT OF THE INTERIOR
 BUREAU OF LAND MANAGEMENT
 Anchorage, Alaska

This plat is strictly conformable to the approved field notes, and the survey, having been correctly executed in accordance with the requirements of law and the regulations of this Bureau, is hereby accepted.

For the Director

John S. Erickson *May 16, 2008*
 Date

Deputy State Director for Cadastral Survey, Alaska



Lat. 61° 35' 33.80" N.
 Long. 149° 32' 20.31" W.
 (NAD 27)

True Meridian
 Mean Magnetic Declination 23° E.

SURVEYED BY JOHN P. WALKER IN 1911